

ELECTRIC VEHICLE CHARGING STATIONS AT GARDEN GROVE & SANTA ANA BUS BASES



Example Electric Charger: CHARGE-POINT ELECTRIC CHARGER

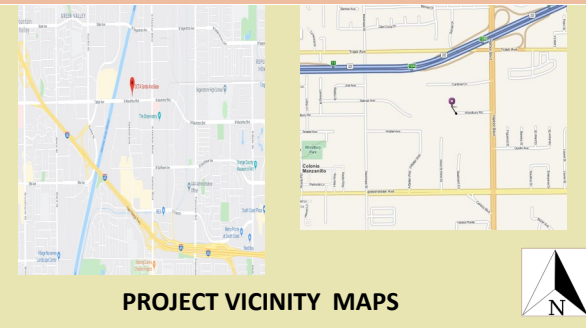
PROJECT SITES:

- OCTA Garden Grove Bus Base located at: 11790 Cardinal Circle, Garden Grove
- OCTA Santa Ana Bus Base located at: 4301 W. MacArthur Boulevard, Santa Ana

AT A GLANCE

PROJECT COST:	\$1.4 Million Approx.
FUNDING:	STATE and FTA
PROJECT CONTACTS:	George Olivo golivo@octa.net 714-560-5872
WEBSITE:	www.octa.net

Fact Sheet as of 01/13/2021



PROJECT VICINITY MAPS

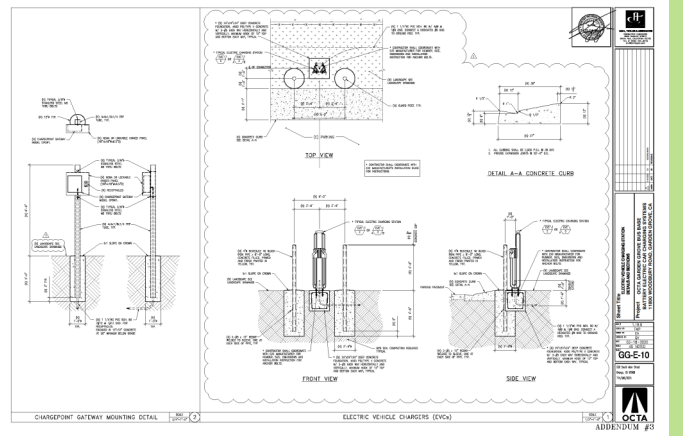
PROJECT HIGHLIGHTS

- ⇒ SUPPORTS CHARGING 30 ELECTRIC OPERATOR RELIEF VEHICLES (ORV's) AND 5 EMPLOYEE ELECTRIC VEHICLES AT EACH BUS BASE. CHARGER / DISPENSER DETAIL:
 - 30 CHARGERS FOR ORV's (charger count is less than dispenser count)
 - 5 CHARGERS FOR EMPLOYEE'S OWNED VEHICLES (Dispensers)
- ALL ELECTRIC VEHICLE CHARGERS WILL BE PURCHASED BY OCTA UNDER A SEPARATE CONTRACT, ELECTRIC CHARGER EXAMPLE ABOVE.
- ⇒ AUTOMATIC ACCESS CONTROLS
- ⇒ BATTERY CHARGE LEVEL AND ENERGY CONSUMPTION MONITORING
- ⇒ ENERGY MANAGEMENT
- ⇒ LANDSCAPE UPGRADES FOR ENVIRONMENTAL ENHANCEMENT

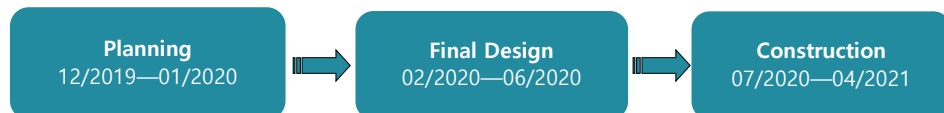
PROJECT STATUS

Agreement issued June 18, 2020.
 Notice to Proceed issued July 1, 2020, Completion Date April 16, 2021
 Compliant Safety Submittals August 14, 2020
 Contractor Mobilization August 19, 2020

ELECTRIC CHARGER PLAN VIEW AND ELEVATION



PROJECT SCHEDULE



Orange County Transportation Authority
 550 S. Main Street
 P.O. Box 14184
 Orange, CA 92863-1584
 714-560-OCTA
 www.octa.net