



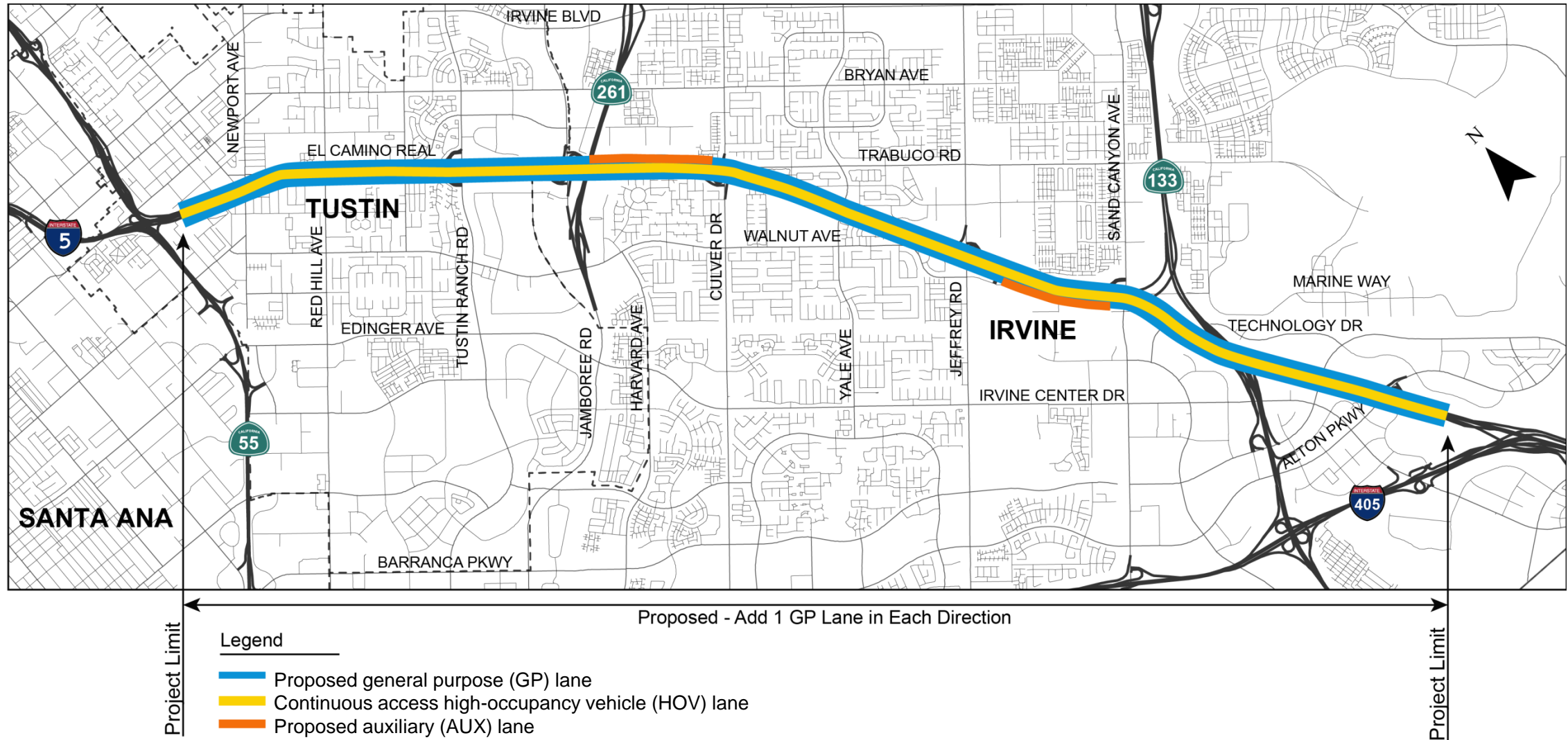
# Update on Interstate 5 Improvement Project from Interstate 405 to State Route 55

Presentation to:  
*Bicycle/Pedestrian Subcommittee*

*April 5, 2018*

# Project Limits and Area of Improvements

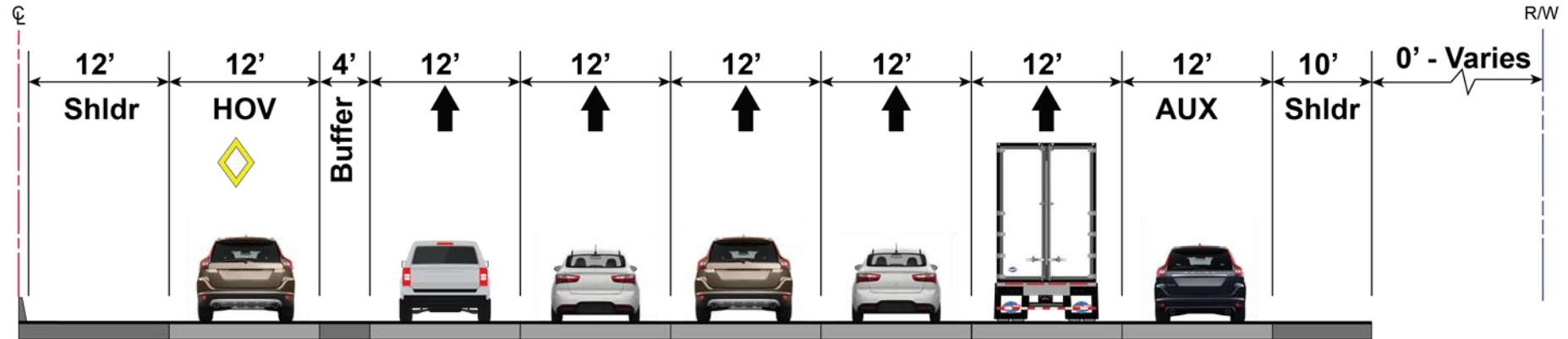
## Interstate 5 (I-5) Improvement Project from Interstate 405 to State Route 55



# Comparison of Alternatives

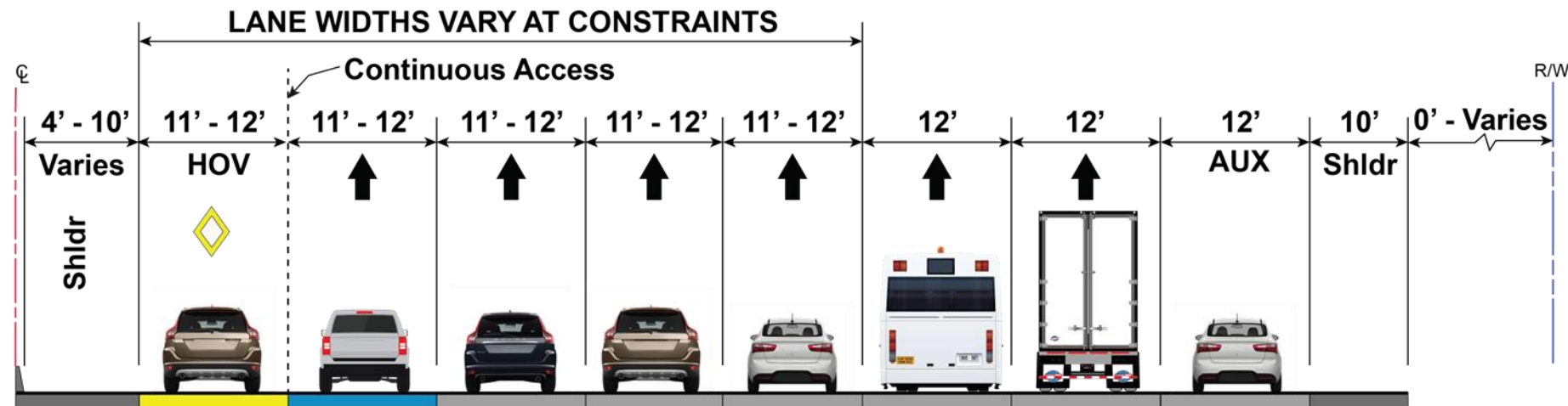
## Alternative 1 (Alt 1) – No Build (Existing)

No capital or operational improvements



## Alternative 2 (Alt 2) – Build

- Adds one GP lane in each direction
- Adds AUX lanes at certain locations
- Restripes HOV lanes for continuous access



# Traffic Benefits

## Average Daily Traffic Volumes

I-5	Existing	2050 – Alt 1 (No Build)	2050 – Alt 2
Northbound	130,200	215,800	228,700
Southbound	145,400	213,200	233,400
Total	275,600	429,000	462,100

## I-5 Freeway Mainline Average Speed (mph)

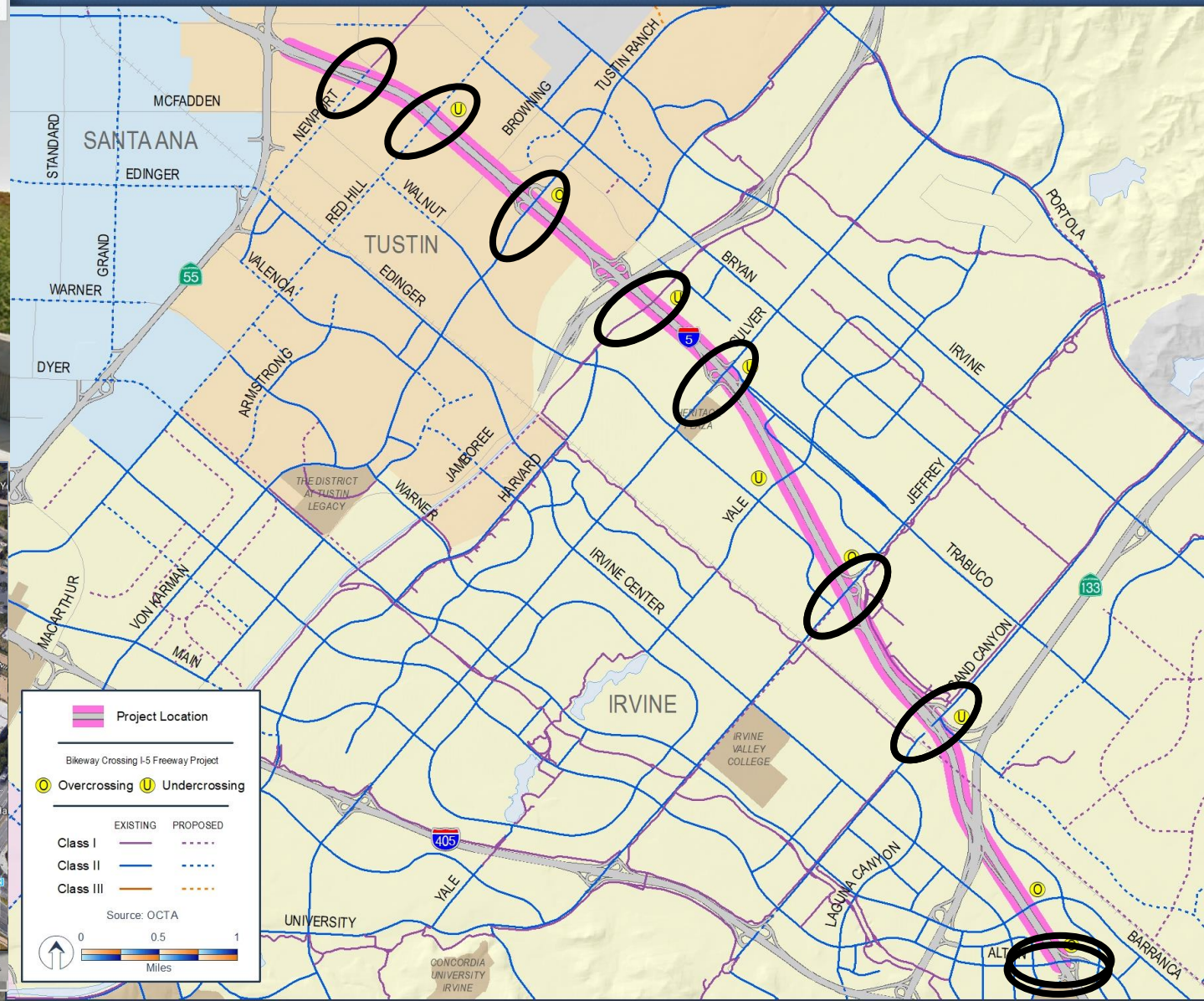
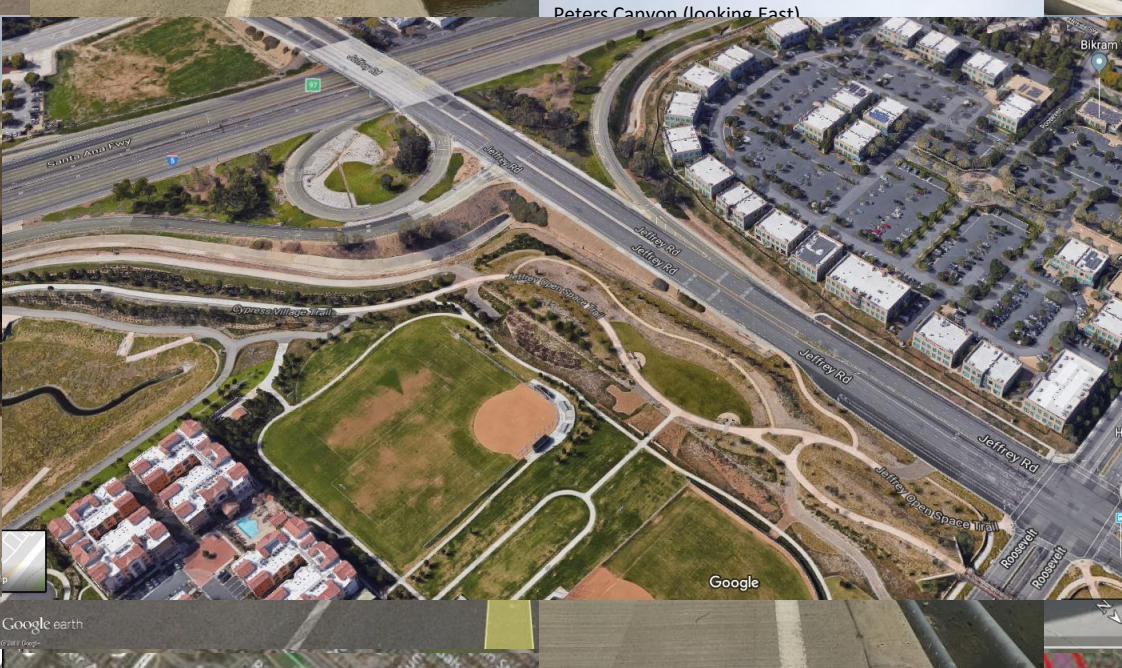
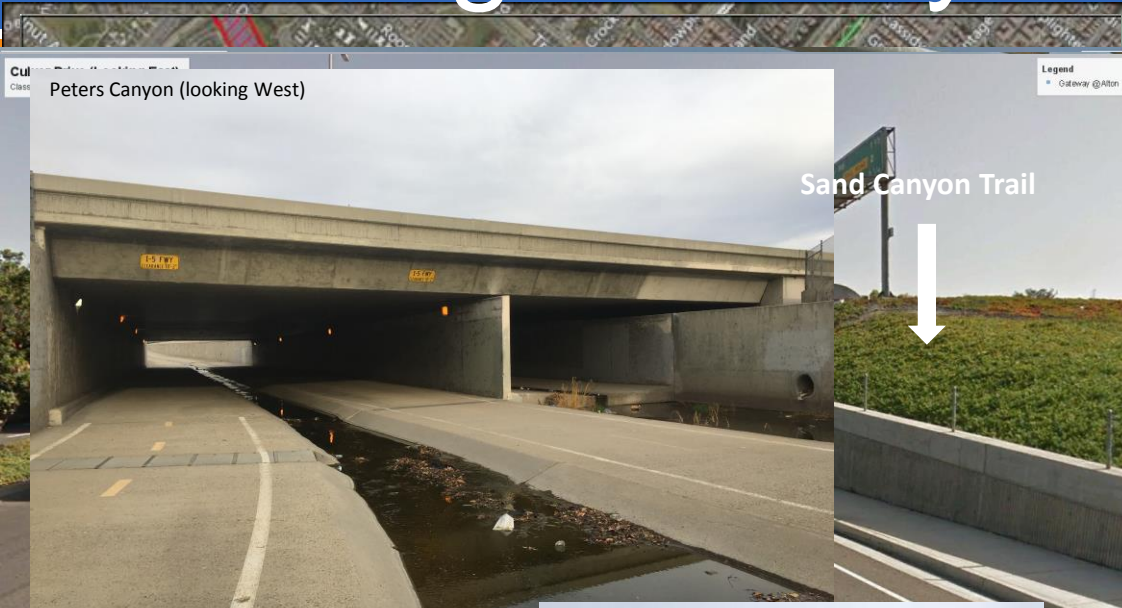
Peak Hour – 2050		Alt 1 – No Build	Alt 2
Northbound	AM	39	44
	PM	34	38
Southbound	AM	43	45
	PM	44	47

## Average Annual Vehicle Hours Saved

Northbound	1,906,000
Southbound	1,945,000

# Existing Bikeways

## I-5 Project - Bikeways



# Public Noticing and Outreach



## PUBLIC INFORMATION MEETINGS

**JANUARY 26TH & 28TH 2015**

**WHAT IS THE I-5 IRVINE TUSTIN PROJECT?**

The I-5 Irvine Tustin Project is a preliminary engineering and environmental study intended to evaluate ways to improve the I-5 between I-405 and SR-55, in the cities of Irvine and Tustin. Currently, about 350,000 motorists drive this nine-mile stretch every day. By 2040, daily traffic volumes are projected to increase to nearly 1.5 million, so planning for this growth is important to Orange County's mobility, economy and quality of life.

As Orange County's transportation agencies, OCTA and Caltrans are conducting the study and holding two public information meetings so that members of the public can learn about the project and share their comments. The I-5 Irvine Tustin Project is part of Measure M, Orange County's voter-approved transportation investment plan. The study began in late 2014 and is scheduled to be completed in early 2017. Renewed by nearly 70% of voters in 2006, Measure M can be viewed at [www.octa.net/pdf/investmentplan.pdf](http://www.octa.net/pdf/investmentplan.pdf)

*Join the project mailing list by signing up at [www.octa.net/getconnected](http://www.octa.net/getconnected)*

### PROJECT STUDY AREA

**WHY SHOULD I ATTEND THE PUBLIC MEETING?**

- Learn about the project's scope of adding a general purpose lane in each direction, schedule and the environmental review process.
- Meet the project team and discuss the proposed alternative concepts.
- Provide your comments, concerns or ideas for improving the I-5 within the study area. Comments will be considered in the Final Environmental Document.
- Get to know the project team and technical experts as the study kicks-off and moves forward.

OCTA y Caltrans se están organizando reuniones públicas para el Proyecto I-5 Irvine Tustin que está evaluando mejoras entre la I-405 y SR-55. Si necesita información del proyecto en español, por favor llame al (714) 560-5556 o deje su información de contacto.

橘郡交通局 (OCTA) 和加利福尼亞運輸部門將舉行「5號州際公路南灣塔斯廷計畫」(I-5 Irvine Tustin Project) 公開說明會。評估405號州際公路 (I-405) 與加州55號公路 (SR-55) 的改善狀況。如果您需要中文解說資料, 請撥打 (714) 560-5556 並留下您的連絡資料。

OCTA와 Caltrans는 I-405와 SR-55 간의 개선을 평가하기 위해 I-5 이라빈 터스틴 프로젝트에 대한 미팅을 주최합니다. 한국어로 프로젝트 정보가 필요하시면 (714) 560-5556로 전화주시거나 연락처를 남겨주시기 바랍니다.

The I-5 Irvine Tustin Project is partially funded by Measure M, Orange County's half-cent sales tax for transportation improvements.



**I-5 IMPROVEMENT PROJECT**  
1-405 TO SR-55

**OCGO**

**AT A GLANCE:**

- Project: I-5 Improvement Project
- Location: I-5 between I-405 and SR-55
- Phase: Planning, Design, Construction
- Start: 2015
- End: 2017

### OVERVIEW

Interstate 5 is essential to Orange County's mobility, economy and quality of life. Every day, more than 350,000 motorists drive this segment of I-5 through the cities of Irvine and Tustin, to reach residential, commercial, educational and employment destinations. Already at capacity, traffic projections show that nearly 1.5 million motorists will travel this stretch of I-5 by 2040.

To address the current and future traffic demand, OCTA and Caltrans are conducting the Project Approval and Environmental Document (PAED) phase to determine the feasibility, reasonability and potential environmental effects of adding additional northbound and southbound lanes, as well as other capacity and operational improvements, to Interstate 5 from north of Interstate 405 to State Route 55, through the cities of Irvine and Tustin.

Funded by Measure M, Orange County's voter-approved Transportation Investment Plan, the study began in mid-2014 and is scheduled to be completed in mid-2017. During this time, Public Information and a Public Alternative will be studied to assess their relative benefits, costs and impacts.

### FACILITY LAYOUT

Station 3 Project Improvements	Station 4 Environmental Review Process	Station 5 Key Milestones & Next Steps	Station 6 Study Completed (Outreach)
-----------------------------------	---	--	---

**IRVINE & TUSTIN IMPROVEMENTS**  
Project Study Area



# Environmental Phase Schedule

