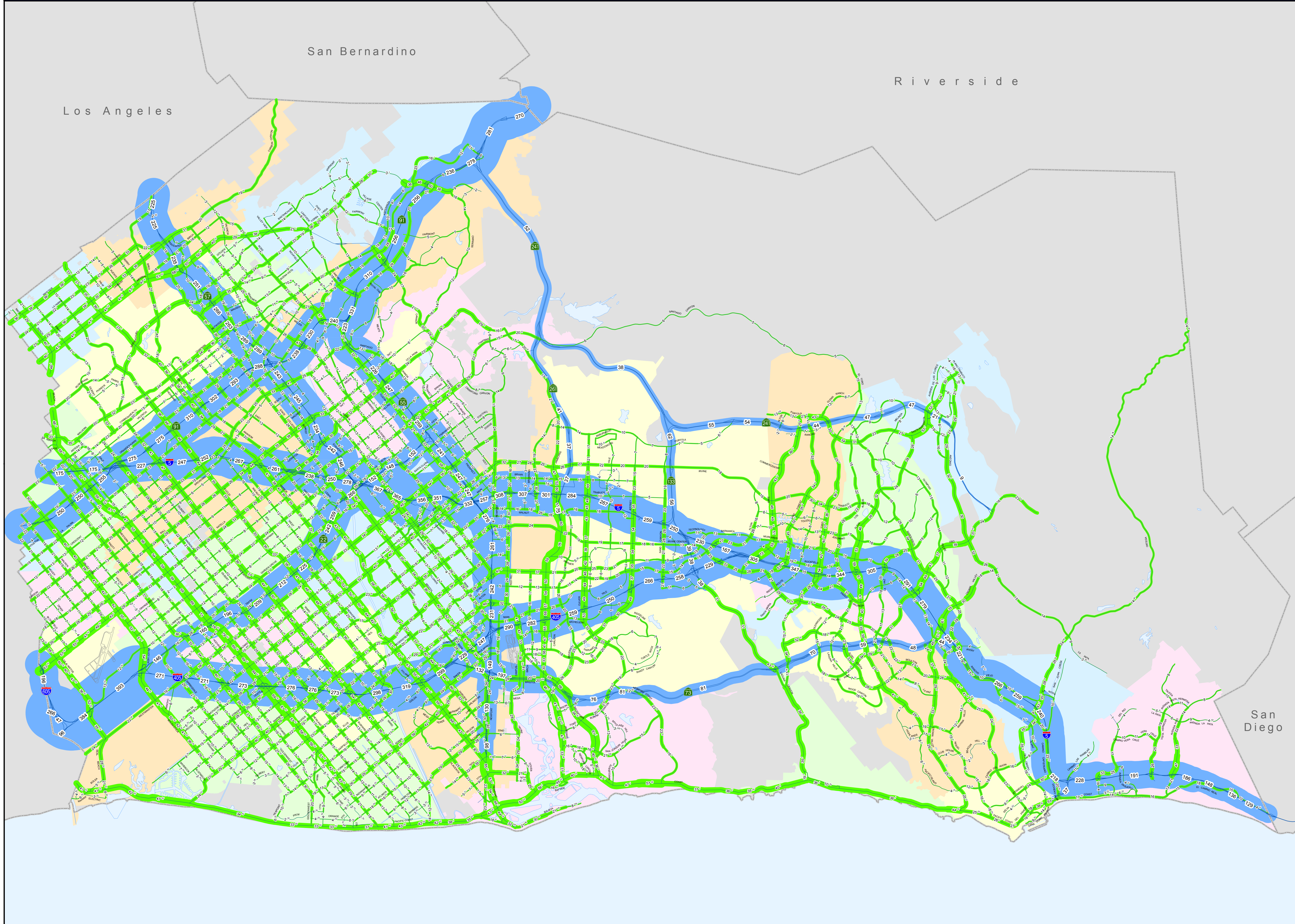


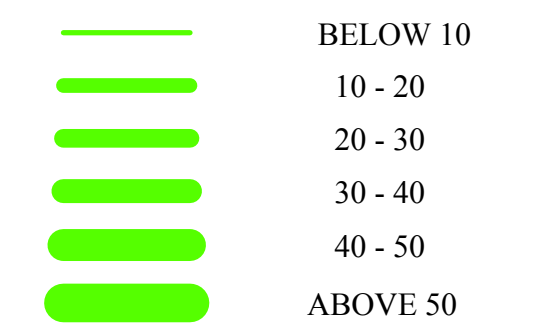
# 2009 Traffic Flow Map



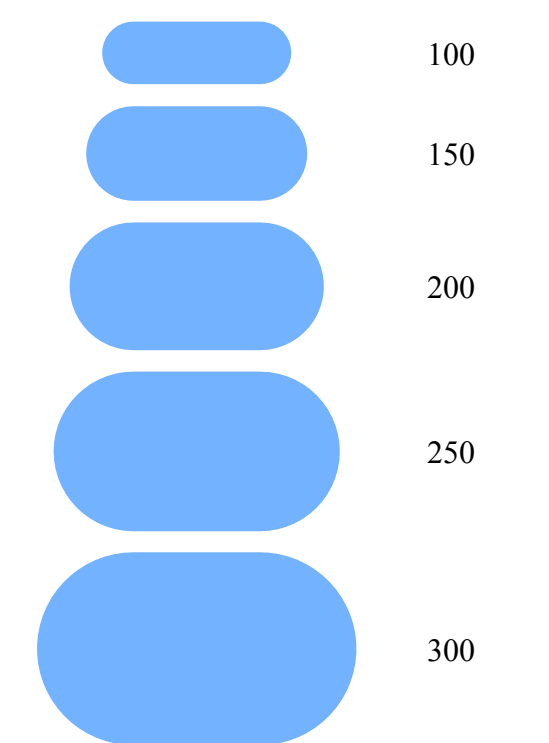
## 2009 TRAFFIC FLOW LEGEND

THOUSANDS OF VEHICLES PER DAY

### ARTERIAL HIGHWAYS



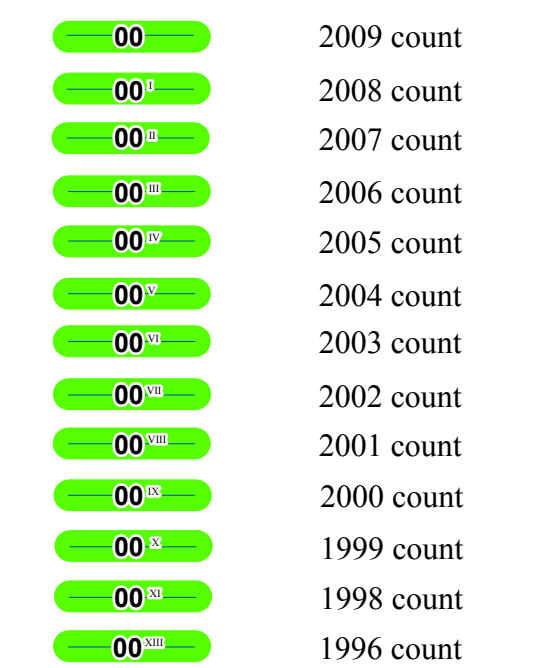
### FREEWAYS



VOLUME SCALE: 1" = 300,000 VEHICLES/DAY

### COUNT DATES

Year of count is indicated by a roman numeral superscript. The numeral represents the number of years prior to 2009 that the count was taken. Current 2009 counts do not have a roman numeral.



This map has been compiled by the Orange County Transportation Authority from input provided by local jurisdictions for arterials and Caltrans for freeways. Caltrans freeway volumes have been adjusted to reflect a 5-day (weekday) volume count. Freeway volumes include HOV and Toll Lane counts. Questions regarding the volumes should be submitted to the responsible jurisdiction for arterials and Caltrans for freeways. **Note: Freeway volumes are from 2008. Caltrans data for 2009 not available.**



Source: Caltrans, County of Orange and Orange County cities

