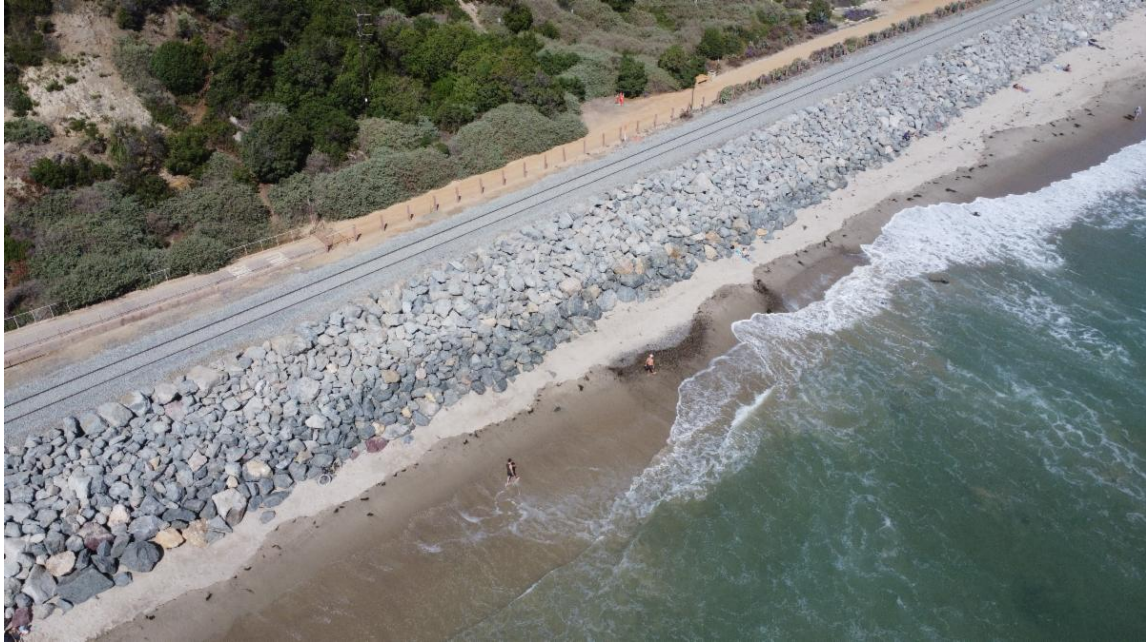


COASTAL RAIL EMERGENCY PROJECTS

The Orange County Transportation Authority, in coordination with Metrolink, is taking emergency action to stabilize the rail line in north San Clemente. The work is necessary to address urgent threats from slope and beach erosion and to protect the community, rail passengers and overall rail operations.



Construction Updates

Crews continue to make progress in the ongoing emergency work to stabilize the coastal rail line in San Clemente.

Contractors will continue to work through early June, from 5 a.m. to 8 p.m. seven days a week, including through Memorial Day weekend and on Memorial Day.

Recognizing that Memorial Day weekend typically draws large crowds, all beaches are scheduled to remain open and if any work is necessary on the coastal side, beachgoers will be safely directed around work areas. Those accessing the beach near the work areas are asked to use extra caution.

Passenger rail service continues to be temporarily suspended through San Clemente. For passenger rail service details, visit:

www.metrolinktrains.com/service-updates and www.pacificsurfliner.com/alerts.

Riprap Repair

Crews are continuing work to strategically place large boulders, also known as riprap, in Project Areas 1 and 2 and are nearing completion in Area

1. Work is also nearing completion in the stretch between Areas 1 and 2, which was a minor modification recently approved by the California Coastal Commission. Since the work began in late April, approximately 5,400 tons of riprap has been placed next to the track.

Catchment Wall

The ongoing work also will include temporarily placing large concrete barriers between the track and the inland bluff in Area 3 to create a safe workspace for crews. The Coastal Commission recently granted a permit to build an approximately 1,400-foot-long catchment wall in Area 3. The schedule to construct that wall is still being determined.

Sand Nourishment

OCTA is concurrently working to source 240,000 cubic yards of sand that will be placed on the beach in Areas 1 and 2 between Mariposa Point and North Beach.

This work may be loud. The schedule is subject to change due to inclement weather or unforeseen operational issues. Train horns may be sounded.





STAY CONNECTED

-  octa.net/railemergency
-  railimprovements@octa.net
-  800-724-0353



Orange County Transportation Authority (TS) | 550 S. Main Street | Orange, CA 92868 US

[Unsubscribe](#) | [Update Profile](#) | [Constant Contact Data Notice](#)



Try email marketing for free today!