

Draft 2018 Long-Range Transportation Plan



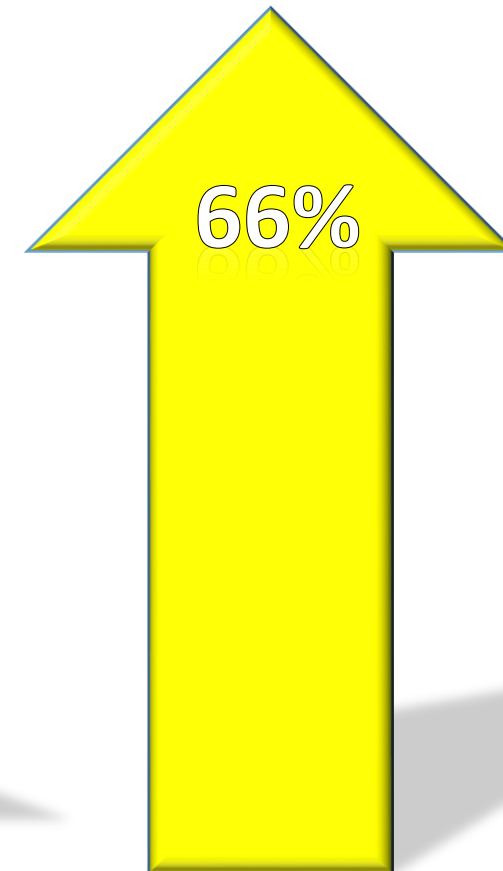
Key Issues for 2018 LRTP

- Growing traffic and limited land
- Changing travel demand and patterns
 - High-cost of housing
 - Evolving transit market
 - Disruptive technologies and services
- Transportation funding uncertainties
- Challenging emission standards



Growing Traffic and Limited Land

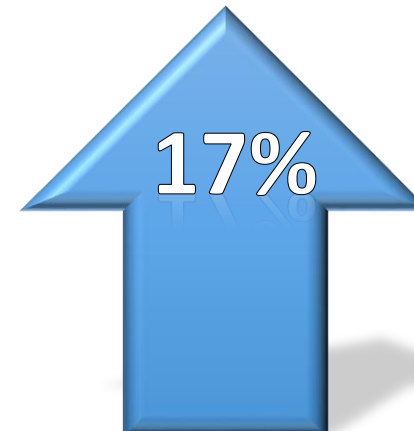
Metrics (daily)	2015 Base Year	2040 Baseline	% Change
Total hours of delay from congestion	330,619	547,996	66%
Delay as a percent of travel time	15.2%	21.4%	41%
Transit trips	149,000	165,000	11%
Freeways – AM peak average speed (mph)	38.3	36.2	-5%
Arterials – AM peak average speed (mph)	25.7	24.3	-5%



Population



Housing



Employment

Congestion Delay

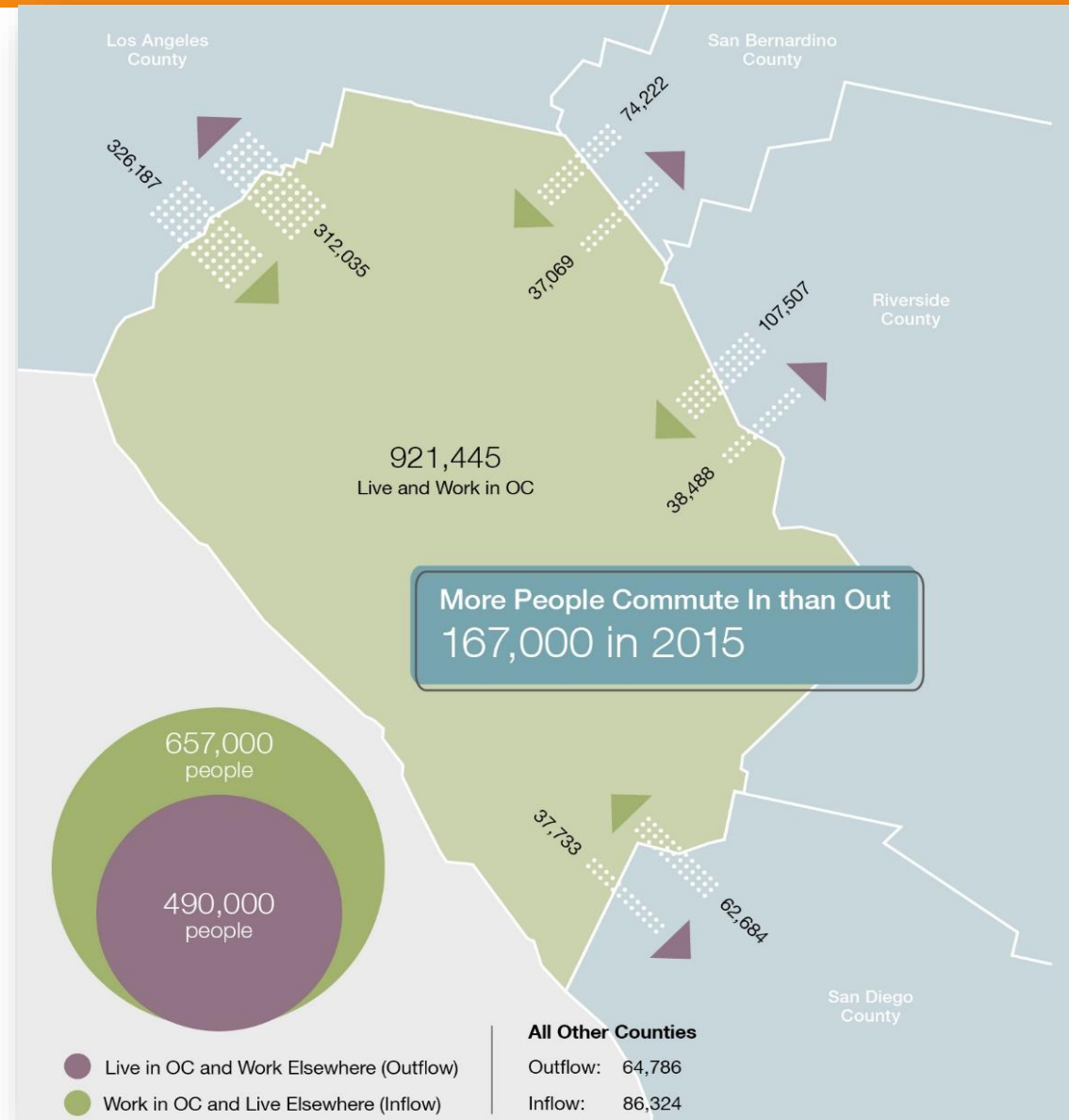
Changing Travel Demand and Patterns

Intercounty Travel Demand

~650,000 daily work-commutes into Orange County

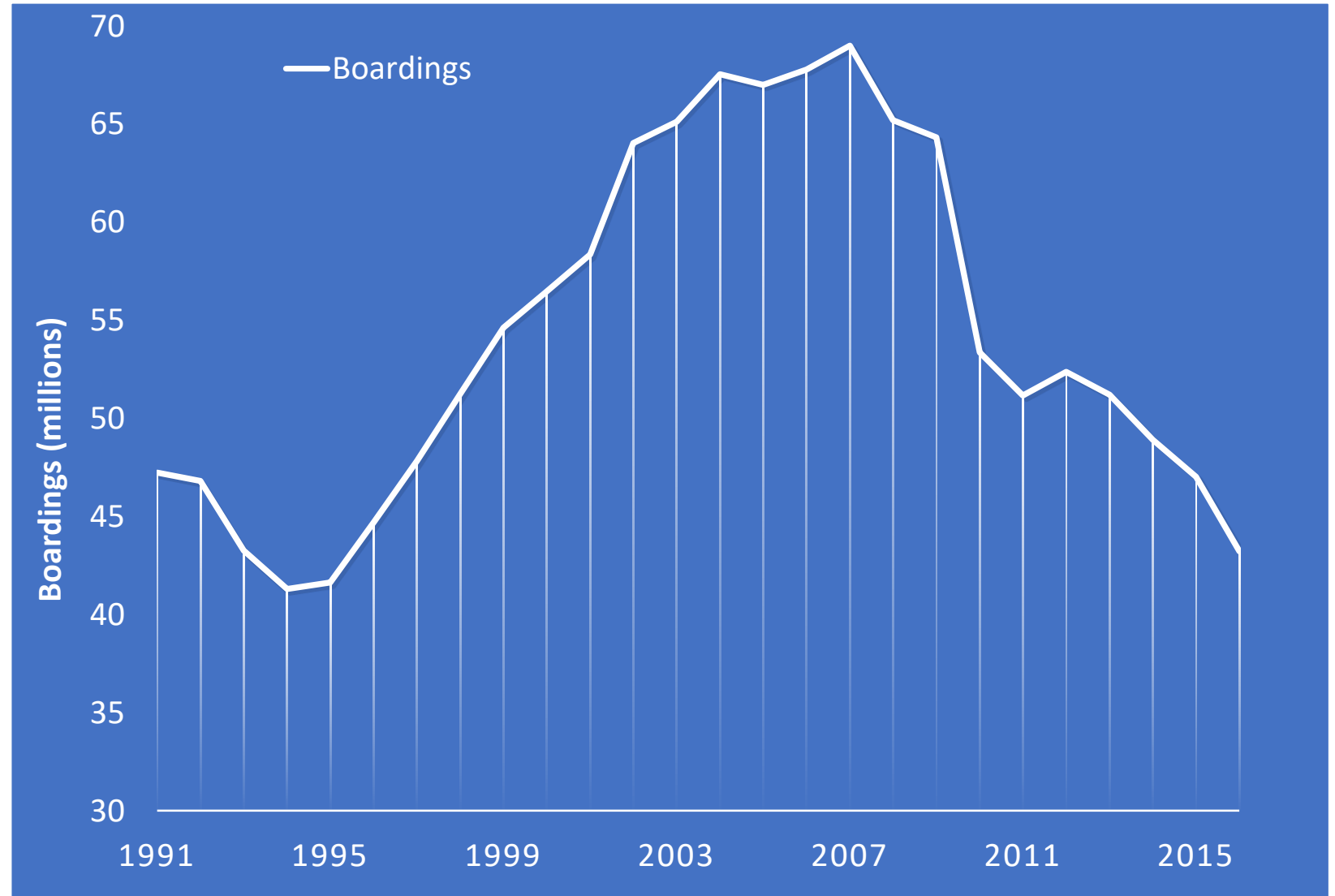
- By 2040, in-bound commutes will increase 25 percent
 - Employment growth + high-cost of housing
- Accessibility to jobs is critical to Orange County's economy and quality of life

OC – Orange County



Changing Travel Demand and Patterns (continued)

Orange County bus boardings have declined since the “Great Recession”



Changing Travel Demand and Patterns (continued)

Impact of Technologies

- Autonomous/connected vehicles
- Transportation network companies (Lyft/Uber)
- Shared mobility
- Real-time travel information
- Electric vehicles and charging



L RTP Outreach To-Date and Major Feedback

- 11,000+ public survey responses
- Engagement with OCTA stakeholders:
 - Citizens Advisory Committee
 - Special Needs Advisory Committee
 - Diverse Community Leaders Committee
 - Teen Council
- Elected Officials Workshops
- Transportation Planning Directors Forums
- OCTA Board/Committee presentations
- OCTA Board Workshop: Managed Lanes
- Thought-leader interviews
- Focus group interviews
- Engagement with partner agencies and interest groups

Keep OC Moving

- Congestion relief on streets and freeways

Expand Transit Options

- Growing interest in expanded transit options

Be Innovative

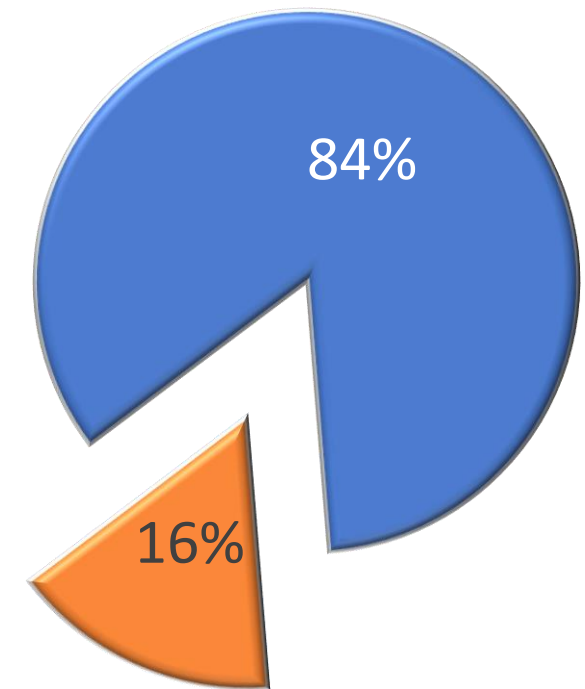
- Monitor and engage in development of technology

Trend 2040

Summary of expenditures

- Measure M2 projects and programs
- Additional freeway/roadway projects within available ROW
- OC Bikeways network buildout
- OC Bus 360° and OC Transit Vision
- Enhanced Metrolink service
- Operations and maintenance

Use of Projected
\$42.3 Billion in Revenues



Highway Improvements

- 2015 lane miles:
1,698

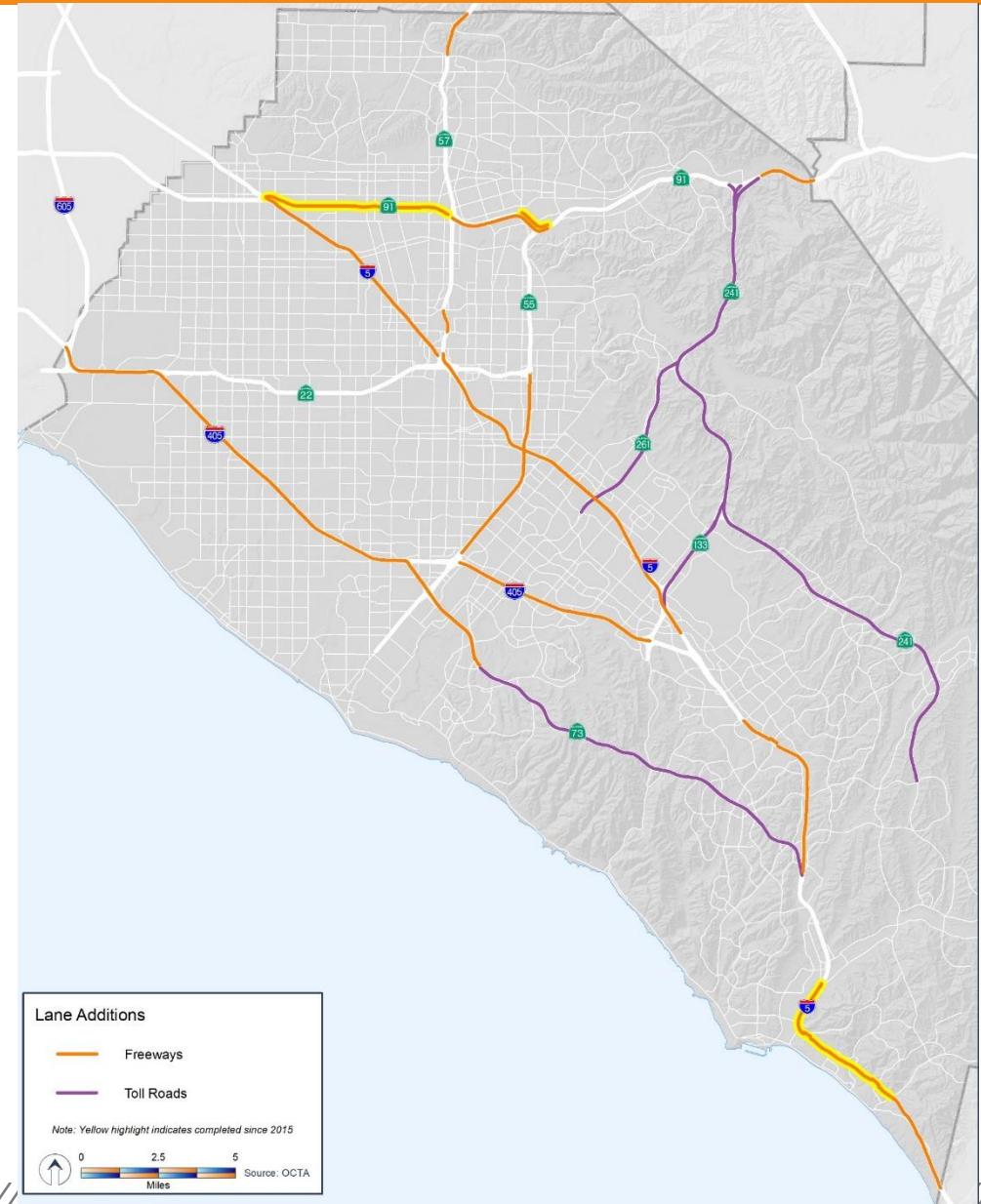
- Additional lane miles by 2040:

Route	Regular Lane Miles	Carpool Lane Miles	Express Toll Lane Miles
I-5	42	42	
I-405	48		32
SR-55	14	11	
SR-57	2		
SR-73		8	
SR-91	15		
Total	121	61	32

I-5 – Interstate 5
 I-405 – Interstate 405
 SR-55 – State Route 55
 SR-57 – State Route 57
 SR-73 – State Route 73
 SR-91 – State Route 91

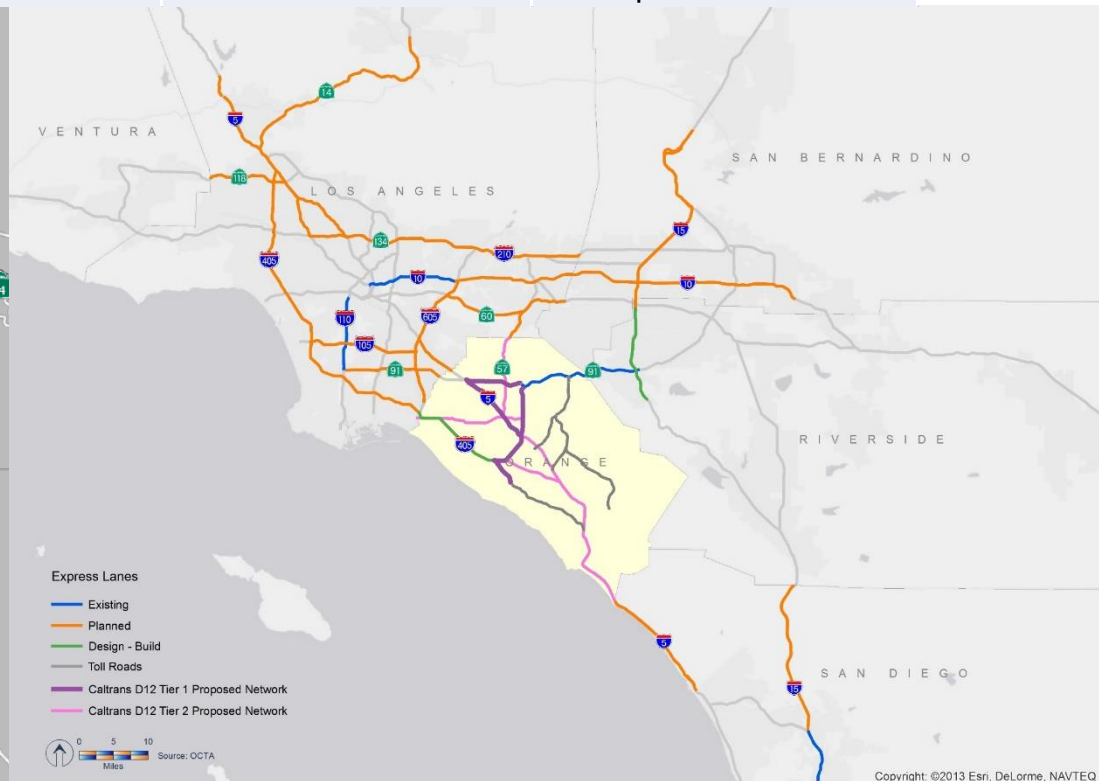
The Toll Roads lane additions

up to **150** lane miles on existing corridors



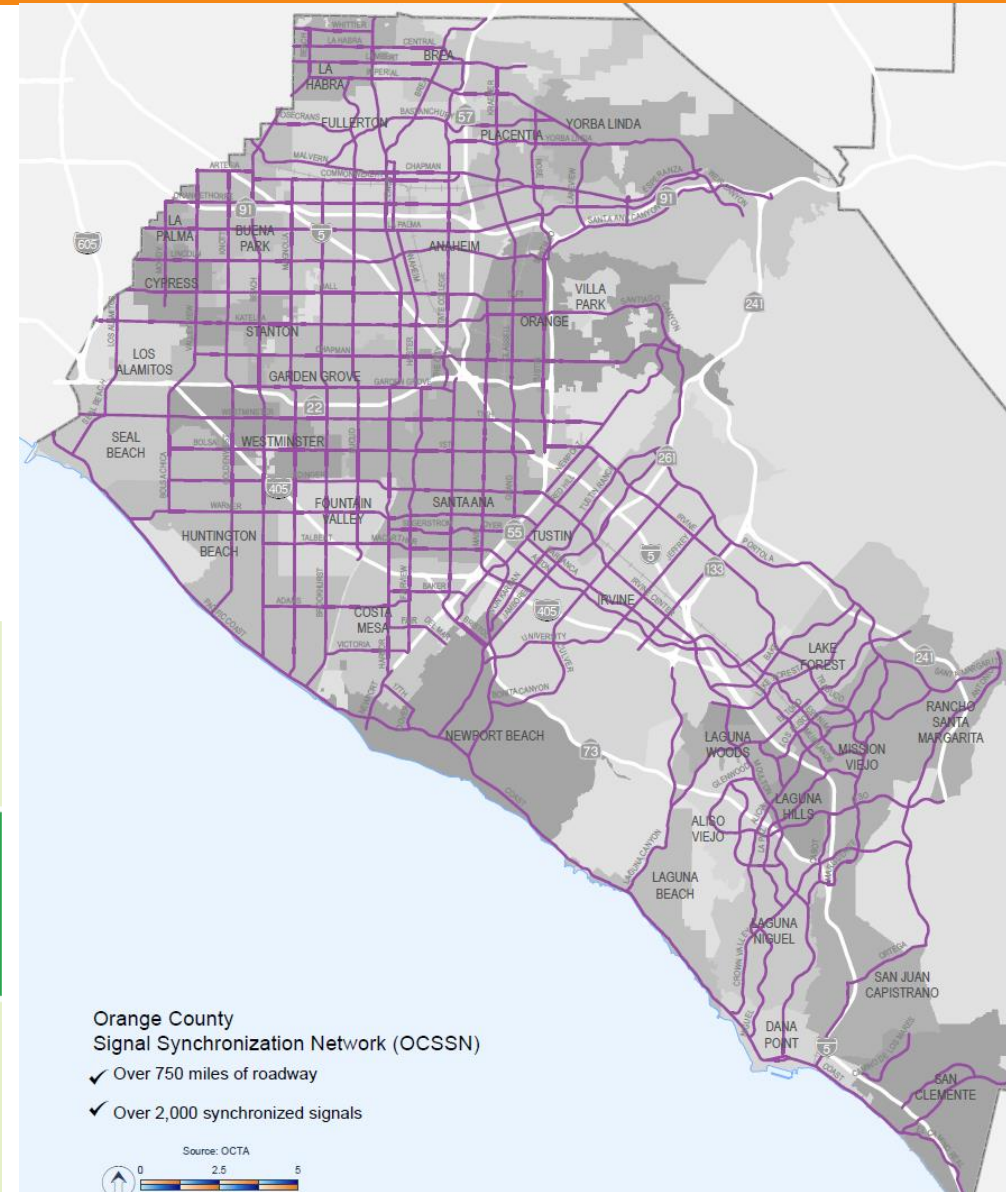
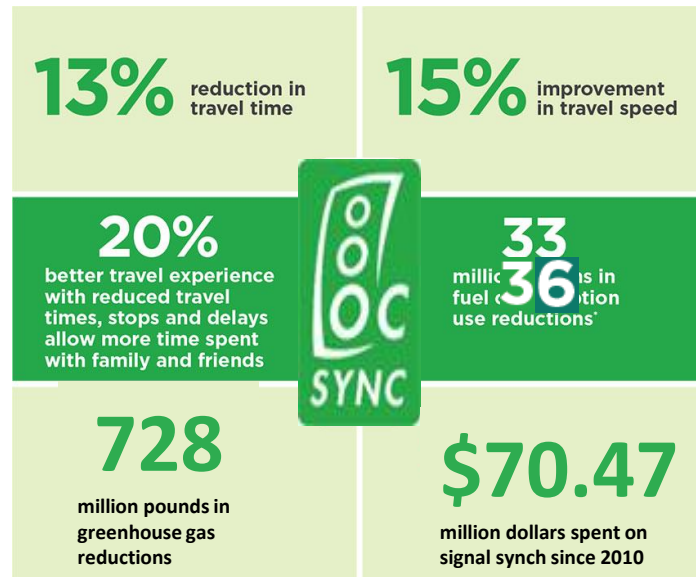
Managed Lane Performance

Trend 2040 Managed Lane Scenarios			
Metrics	HOV 2+	HOV 3+	Express Toll
Meets federal performance standard	✗	✓	✓
Managed lane capacity used during morning drive time	70%	30%	60%
Findings Summary	Does not meet federal standard due to overuse.	Meets federal standard, but underused.	Meets federal standard and doubles use compared to HOV 3+



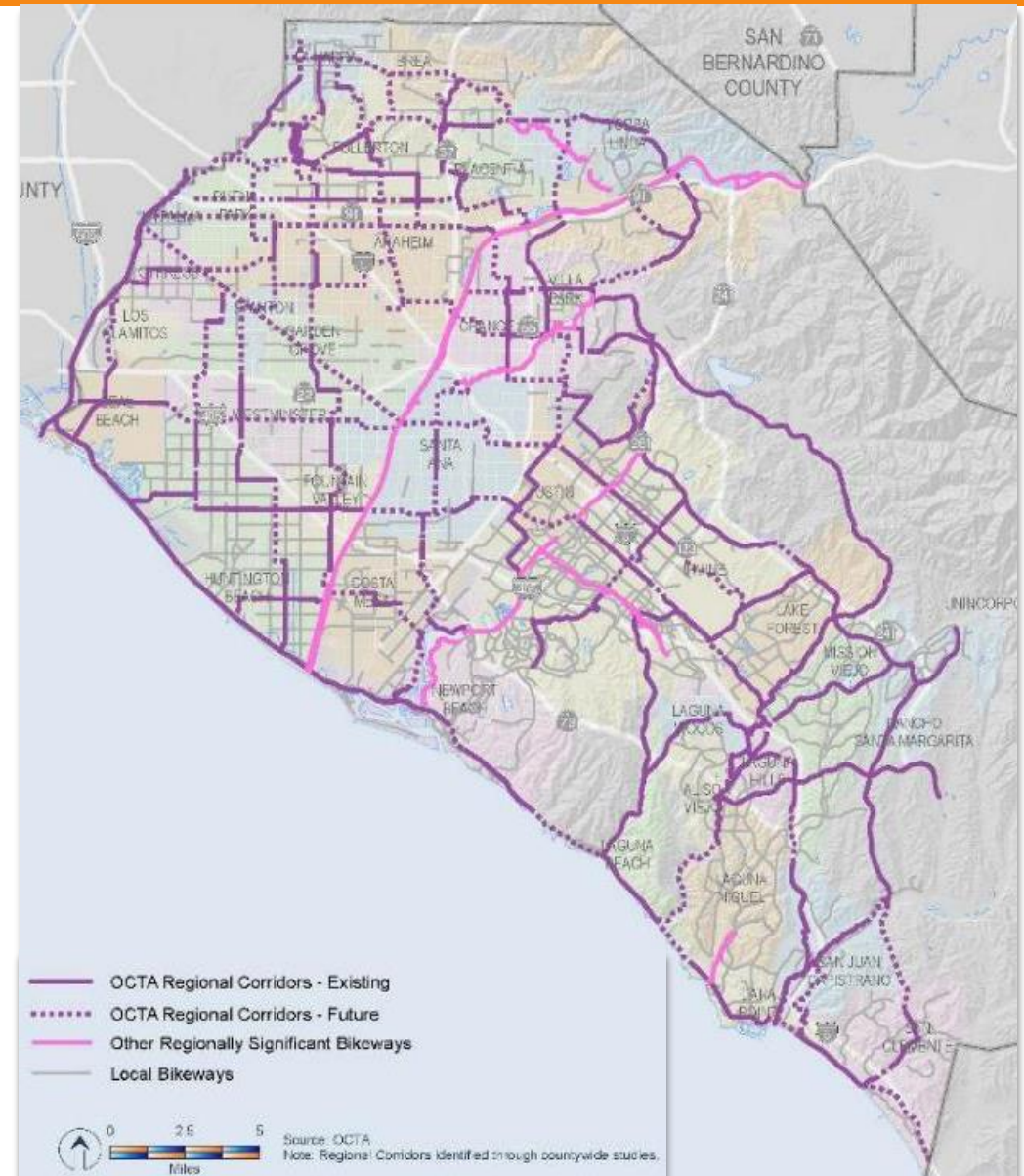
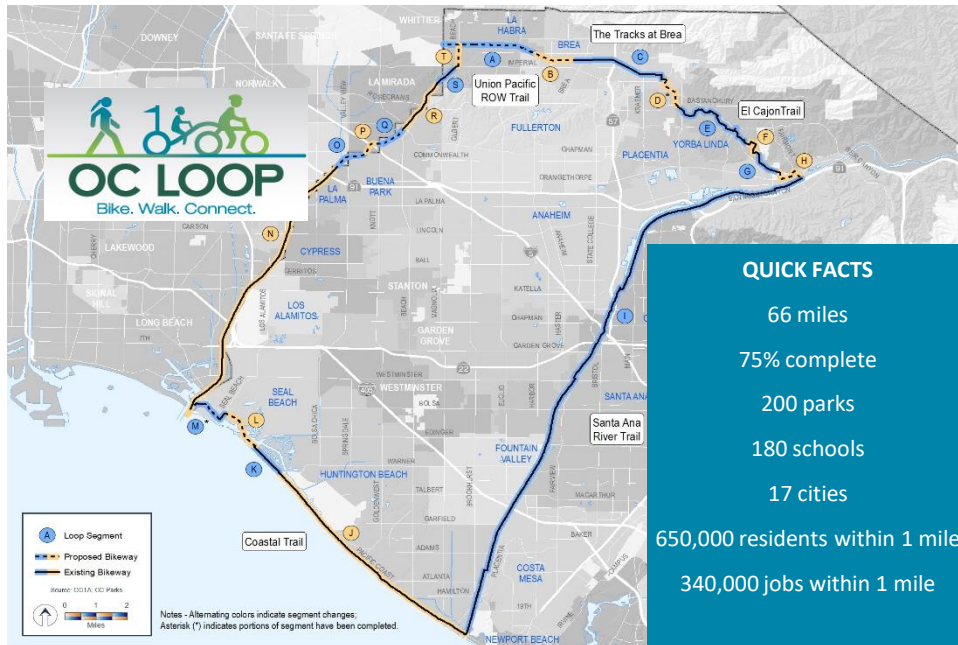
Street Improvements

- 2015 lane miles: **6,377**
- Additional lane miles by 2040: **651**
- Synchronized intersections: **2,000+**



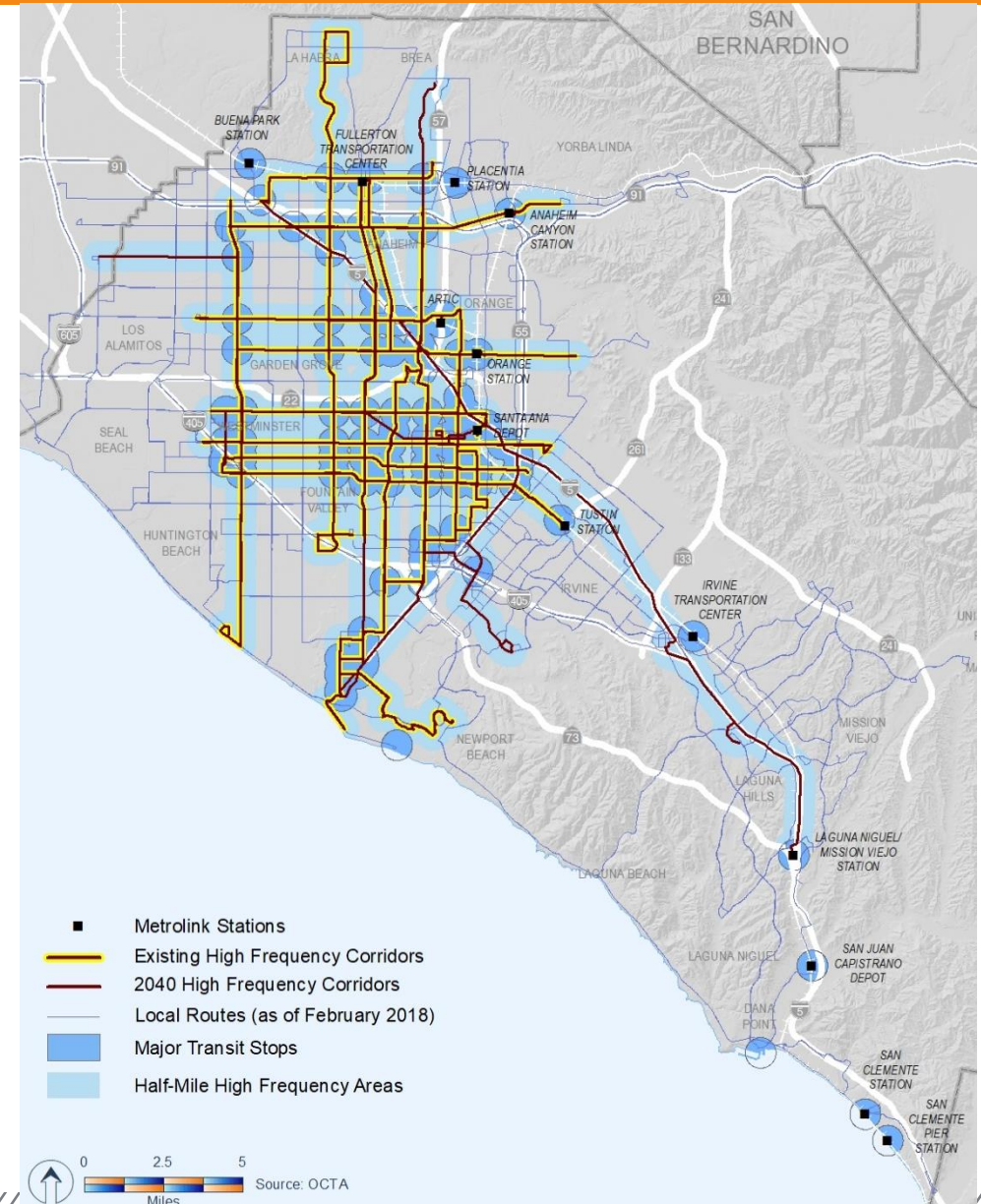
Active Transportation Improvements

- 2015 miles of bikeways:
1,130
- Additional miles of bikeways by 2040:
+655



Transit Improvements

- 2015 hours of service: **1.6 million**
- Additional service hours by 2040: **+480,000**



Metrolink Improvements

- 2015 daily trains:

<u>OC Line</u>	<u>IE/OC Line</u>	<u>91 Line</u>
29	16	9

- Additional daily trains by 2040:

<u>OC Line</u>	<u>IE/OC Line</u>	<u>91 Line</u>
+6	+12	+14

 **TIER 4 LOCOMOTIVE** | CLEAN POWER
METROLINK PROUDLY INTRODUCES THE NEW, INDUSTRY-LEADING TIER 4 LOCOMOTIVE.



IE – Inland Empire



Trend 2040 - Results

Metrics (daily)	2015 Base Year	2040 No Build	Trend 2040*
Delay as a percent of travel time	15.2%	21.4%	15.5%
Transit trips	149,000	165,000	174,000
Freeways – AM peak average speed (mph)	38.3	36.2	39.5
Managed lanes – AM peak capacity utilization	77%	83%	60%
Arterials – AM peak average speed (mph)	25.7	24.3	25.8

Trend 2040 nearly matches 2015 conditions

- Despite over 1.7 million daily trips added

*Trend 2040 assumes managed lanes are operated as tolled express lanes

Trend 2040 - Outcomes

Growing Traffic and Limited Land

- Expands facilities with minimal ROW impacts
- Improves efficiency of highways and roadways
 - Eliminates bottlenecks
 - Synchronizes signals
 - Provides express lane options
- Supports alternatives to driving alone

Changing Travel Demand and Patterns

- Supports access to Orange County jobs
- Focuses transit service on high-demand corridors
- Coordinate with public and private sectors to address emerging technologies and policies

Funding Uncertainties

- Prioritizes Measure M projects and programs
- Implements cost-effective transit services
- Includes projects in line with competitive funding goals
 - Active transportation
 - High-quality transit
 - Managed lanes

Challenging Emission Standards

- Reduces delay on freeways and roadways
- Expands system choices
 - Increases transit services
 - Builds out bikeways
 - Adds managed lanes
- Zero-emission bus fleet and Tier 4 locomotives

Short-Term Action Plan

Orange County Planning Activities

Coordination with Local Partner Agencies

South Orange County Mobility Study

Corridor Studies and Improvements

OC Transit Vision Feasibility Studies

Transit Support Services

Managed Lane Studies

Freeway Chokepoints

Signal Synchronization

Transportation Demand Management

Active Transportation Investments

Sustainable Transportation Strategies

Joint Development Studies

Asset Management

Regional Planning Activities

Coordination with Regional Partner Agencies

Trade Corridors/Goods Movement

2020 RTP/SCS

2028 Olympics

Metro Countywide Express Lanes Strategic Plan

San Diego's I-5 Toll Lane Project

West Santa Ana Branch/ Pacific Electric ROW

Gold Line Eastern Extension – Phase 2

LOSSAN/Green Line Connection

Emerging Issues

Monitor New Technology

Connected Infrastructure Needs Assessment

State and Federal Regulation

State and Federal Funding

Transportation Outreach and Education

Active Transportation Safety

Transit Use and Trip Planning

RTP/SCS – Regional Transportation Plan/Sustainability Communities Strategy
LOSSAN – Los Angeles-San Diego-San Luis Obispo Rail Corridor

Next Steps

Summer 2018

- Public Outreach
 - 40-day public review period
 - Online survey
 - Community events/pop-ups
 - City and stakeholder outreach
 - Telephone town hall
 - Open house

Fall 2018

- Finalize 2018 LRTP

