

Reimagining the OCTA Fullerton Park and Ride Facility

Online Community Webinar

March 20, 2025

Welcome! We will begin in a few moments.

¡Bienvenido! Comenzaremos en unos momentos.

환영합니다! 잠시 후에 시작하겠습니다.



Interpretation Available / Interpretación Disponible

- Click on the “Interpretation” icon
- Select your language of choice "English", "Spanish", or "Korean"
- To hear Spanish or Korean interpretation only, click Mute Original Audio



Spanish

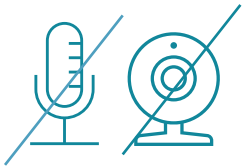
- Haga clic en el icono de “Interpretación”
- Seleccione “Spanish” (español)
- Para escuchar solo el idioma interpretado, haga clic en “Mute Original Audio” para “Silenciar el audio inglés”

Korean

- '해석' 아이콘 클릭
- "한국어"를 선택합니다
- 한국어 번역만 들으려면 "오리지널 오디오 음소거"를 클릭합니다

Meeting Format

Today's meeting is being recorded to accurately capture your input.



Attendee cameras are off and microphones are muted.



Questions can be submitted throughout the presentation using the 'Q&A' function. The team will respond to questions during the Q&A sessions.



To use closed captioning, select the "cc" at the bottom of your Zoom screen



Please use the '*Raise Hand*' icon to ask a question verbally during the 'Q&A' sessions.

How to Participate

You may submit multiple comments/questions, as needed:

Via web

- Verbal Comments: Click Participants > “**raise hand**”
- Type comments: Click the “**Q&A**” function
- State your name and organization (if any)
- When announced, unmute your audio, you can then ask you question(s)
- You will be re-muted once you complete your comment(s)



Via the phone (calling in):

- Press “*9” on your keypad to “raise hand”
- You will be announced by the last four digits of your phone number
- Press “*6” to unmute your audio
- You will be re-muted once you complete your comment(s)

As a reminder, the chat will be used by the team to share information and links to resources.

Today's Speakers



Angel Garfio
Project Manager

Marissa Espino
Public Outreach Section Manager



Jaymes Dunsmore
Project Manager



Team Introductions

Lead Agency



Partners



Consultant Team



Urban Planner



Community Outreach



Agenda

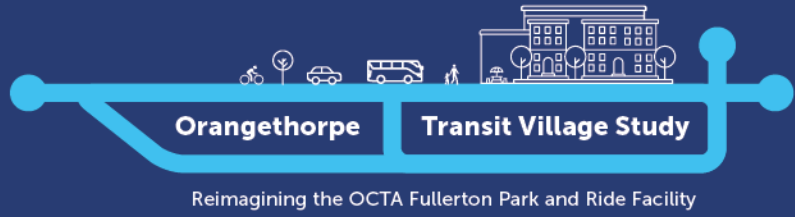
6:05 PM **Presentation** (with feedback questions throughout)

- Study Overview
- Study Tasks & Timeline
- Community Outreach Recap
- Design Options
- Current Community Outreach

6:30 PM **Q&A**

7:00 PM **Adjourn**





Study Overview

Site Overview

OCTA Fullerton Park and Ride 3000 W Orangethorpe Ave Fullerton, CA 92833

- Owned & operated by OCTA
- ~ 9 Acres
- 8 Bus Routes (25, 26, 30, 33, 35, 83, 529 & 460 (Metro))
- 14 Bus Bays and
- 2 On-street Bus Stops
- 745 Parking Spaces



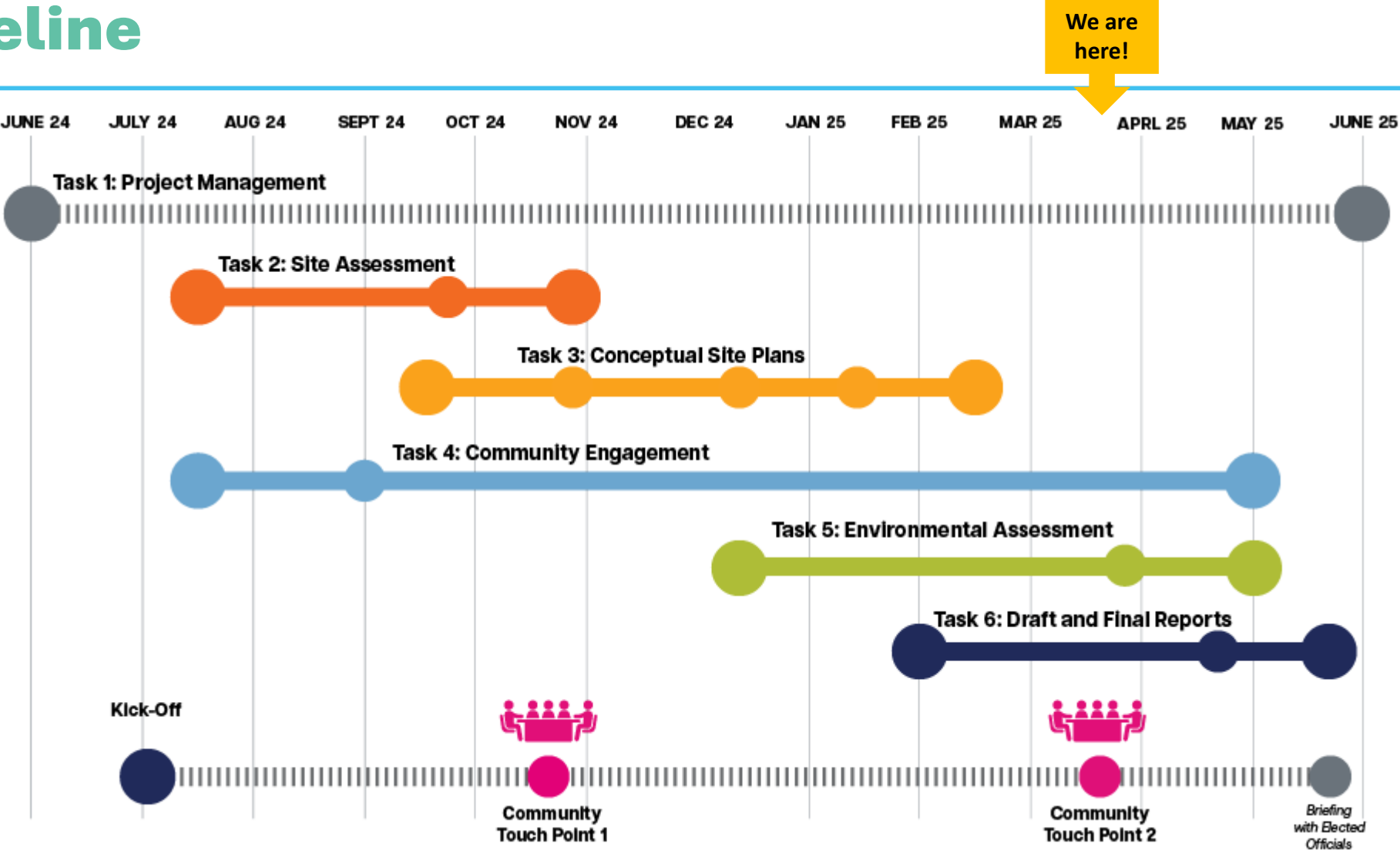
Study Goals

Study potential improvements and transit-supportive development opportunities at the OCTA Fullerton Park and Ride facility.

- Create a Transit-Supportive Mixed-Use Development
- Enhance Transit and Park and Ride Facilities
- Improve Transit Rider Experience
- Increase Access to Sustainable Mobility
- Strengthen Community Pride and Sense of Place



Timeline





Community Outreach Recap

OUTREACH RECAP: Phase 1 Engagement Activities

GOAL: Understand the community's current experience of the site and gather feedback on future aspirations to inform development of concept site options.



OUTREACH RECAP: Pop-Up Events



Gilbert Community Center Pop-up
October 18th



Cops N' Goblins Spooktacular
(Buena Park Civic Center)
October 31st



Fullerton Park and Ride Pop-up
October 18th



Fullerton Certified Farmers' Market
(Fullerton Community Center)
November 6th

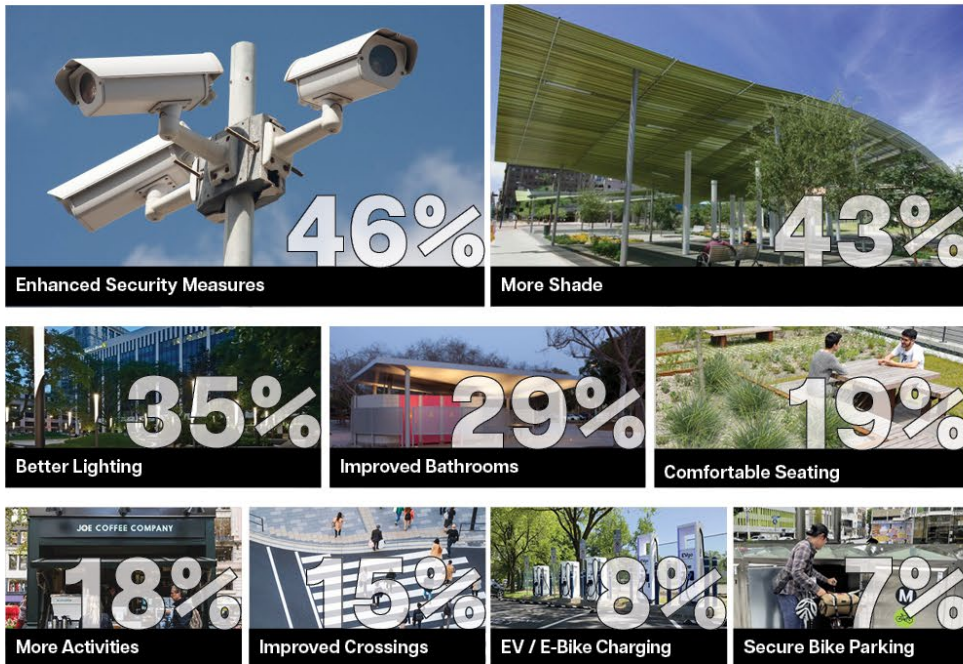


OUTREACH RECAP: Desired Improvements & Amenities

Based on Survey, In-person, and Virtual Meeting Participants

Q7. What improvements would you most like to see at the Fullerton Park and Ride?

Multiple Choice (Participants could select upto 3 choices)



Other Comments:

- "Vending machines dispense exact change for commuting."
- "We need kiosks to buy daily and monthly OCTA and TAP passes."
- "Provide hookups for computers and cell phone charging."
- "ADA and senior services should be made available for everyone to ride comfortably."
- "Having emergency call points on site would make us feel a lot safer."
- "For someone to patrol to protect bus riders."



OUTREACH RECAP: Desired Development Programs

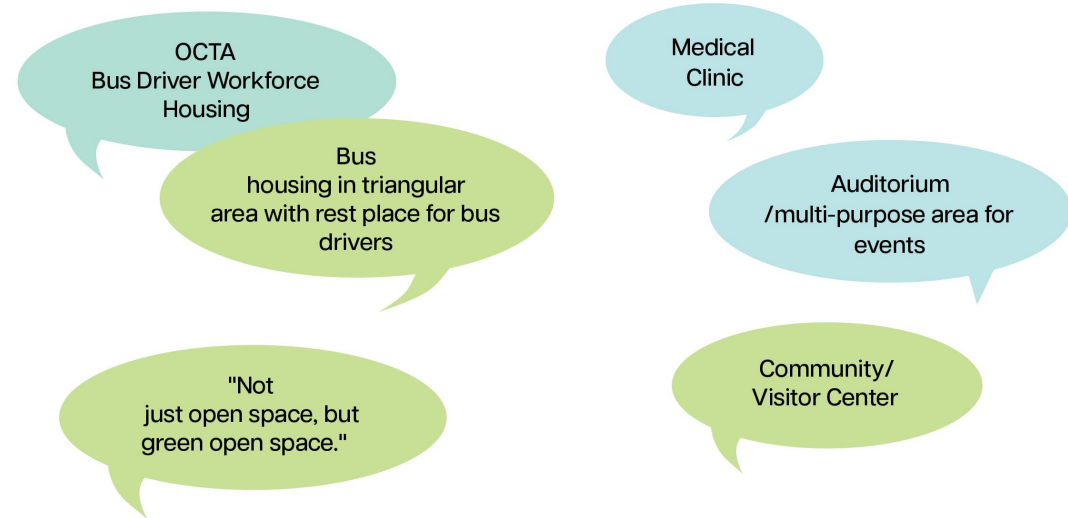
Based on Survey, In-person, and Virtual Meeting Participants

Q7. What improvements would you most like to see at the Fullerton Park and Ride?

Multiple Choice (Participants could select up to 3 choices)



Other Suggested Programs



OUTREACH RECAP: Other Community Feedback

Traffic and Congestion Management:

Participants expressed concern that development in this area will worsen congestion, which is already a challenge due to high school drop-off and pick-up traffic.

"We're worried that housing projects will bring too much traffic."

"Traffic at the park-n-ride already makes it hard to get in and out, especially on Magnolia."

"Shelter from the freeway noise is already needed; more traffic will only make it worse."

Parking-Related Concerns:

There is a strong concern among the community about the potential loss of parking if housing developments are

"We will lose parking spaces with new housing development."

"We need a dedicated bus rider parking lot since so many buses start here."

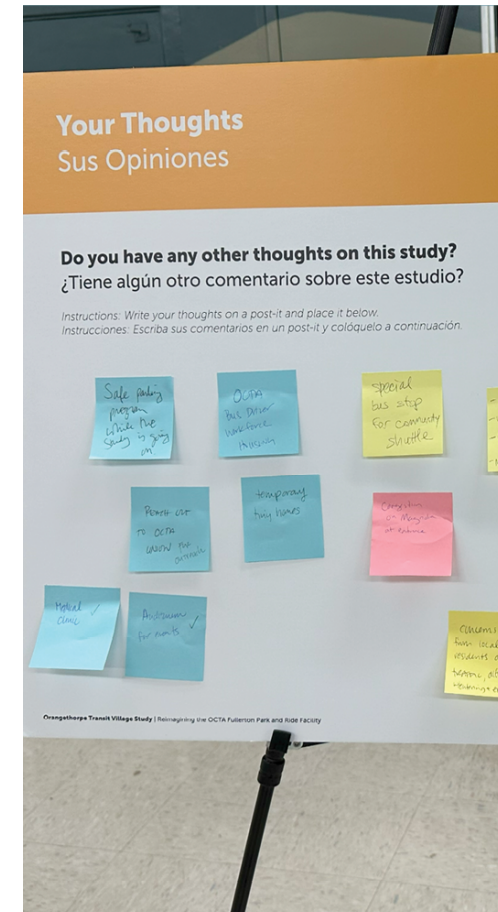
Integration of Community/Local Economy

"Partner with nearby businesses to support the development of the area."

Safety and Shelter

"We need better shelter/tiny homes for the unhoused during the cold winters."

"Safe Parking during the study would make a big difference for those living in their vehicles."



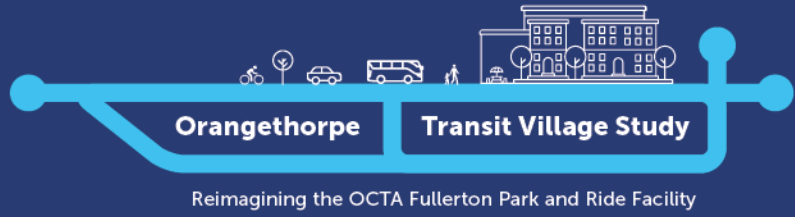
Public and Stakeholder Engagement

Phase 2: Trilingual Notification: Feb. 24th to Apr. 7th

Notification Efforts

- Project website
- Mailer/flyers
- Door-to-door notification
- Electronic notices
- Social media ads
- Public counter notification distribution
- Lawn signs & Banners
- E-communications toolkit
 - Sent to partners, stakeholders & community groups

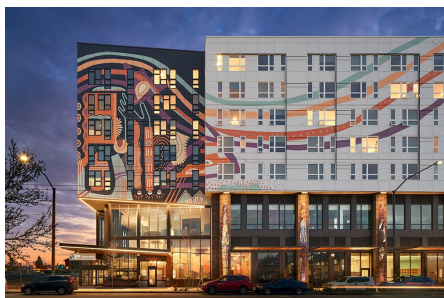




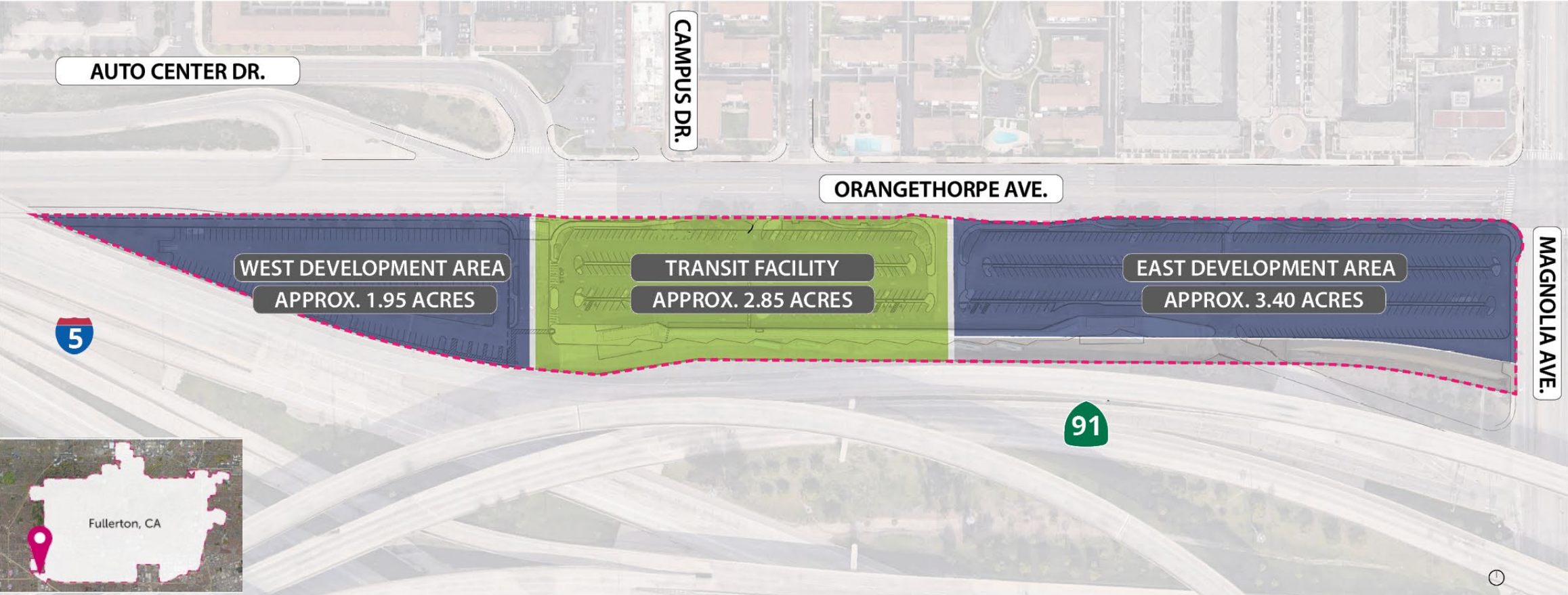
Design Concept Alternatives

SITE PROGRAM: What you'll see

- **Design Development Options** with range of potential uses:
 - Multi-family housing
 - Office space
 - Community/Commercial space
 - Plaza/open space
 - Parking
- **Transit Facility & Plaza** with a range of potential uses:
 - Landscape
 - Play areas
 - Covered seating
 - Noise reduction elements
 - Event spaces/gathering areas
 - Retail/café space
 - Bicycle parking/repair stations

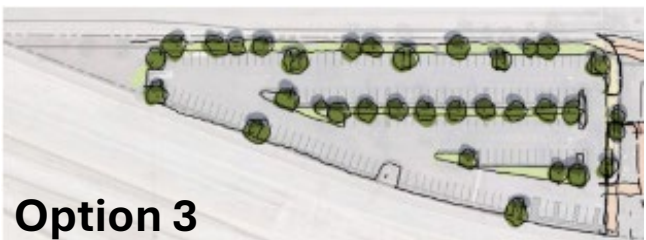
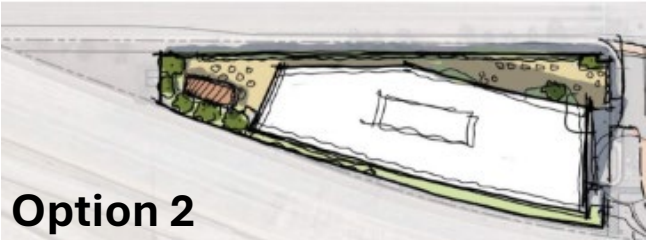


SITE PROGRAM: How everything is organized

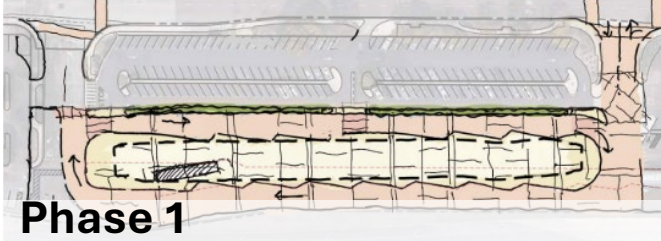


Site Development Options

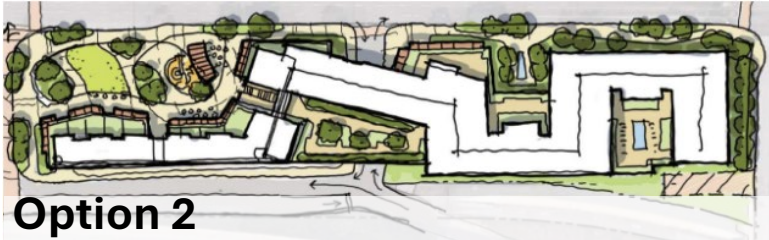
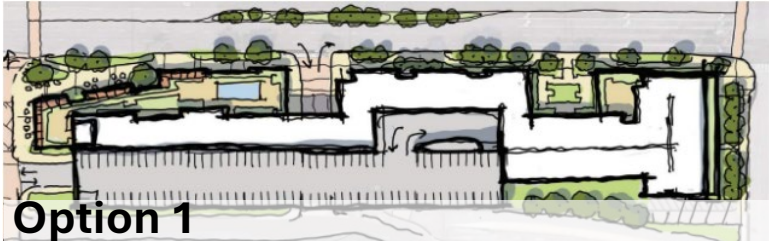
West Development Options



Transit Facility



East Development Options

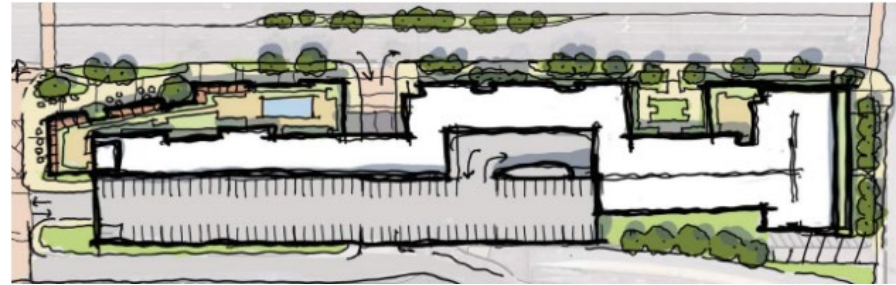


East Development Area

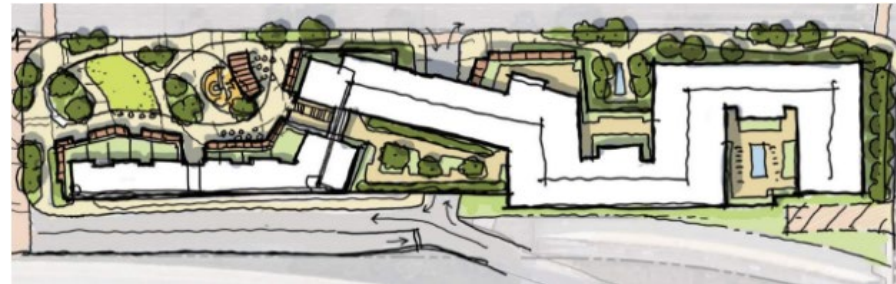
Plan

Rendering

Option 1: A lower number of residential units with larger community/commercial space



Option 2: A moderate number of residential units with smaller community/commercial space



Option 3: A higher number of residential units with medium-sized community/commercial space



Zoom Poll Question #1:

For the East Development Area, which option do you prefer?



Select one (1) in the Zoom Poll:

A – Option 1: A lower number of residential units with larger community/commercial space

B – Option 2: A moderate number of residential units with smaller community/commercial space

C – Option 3: A higher number of residential units with medium-sized community/commercial space

West Development Area

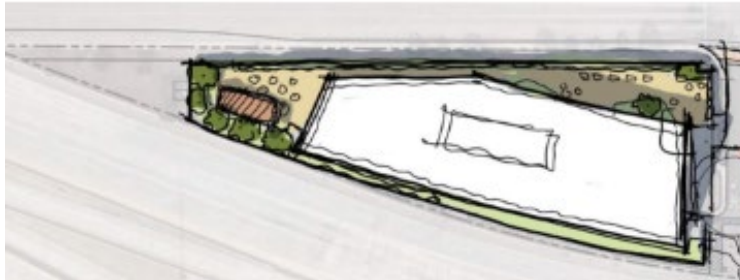
Plan

Rendering

Option 1: Residential Units



Option 2: Office Space



Option 3: Parking lot for transit users



Zoom Poll Question #2:

For the West Development Area, which option to you prefer?



Select one (1) in the Zoom Poll:

A – Option 1: Residential Units

B – Option 2: Office Space

C – Option 3: Parking lot for transit users

Transit Facility

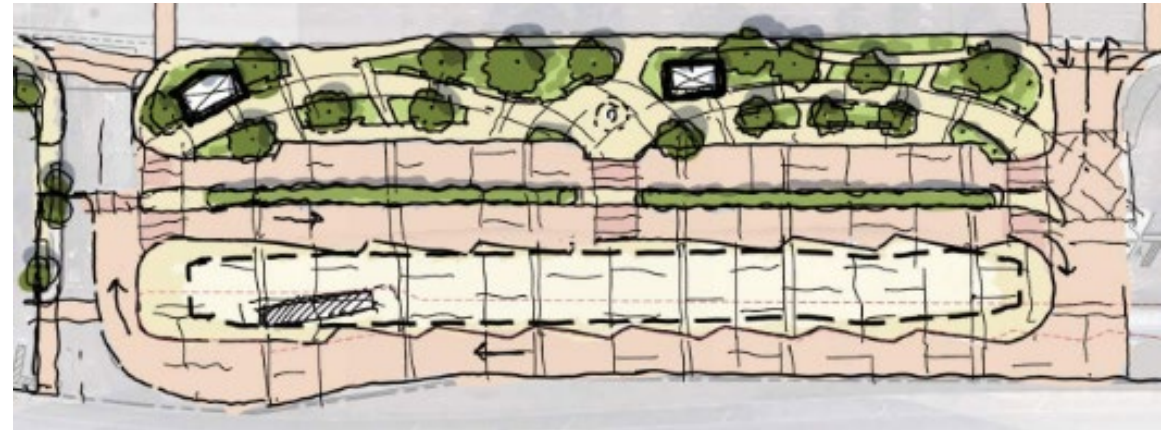
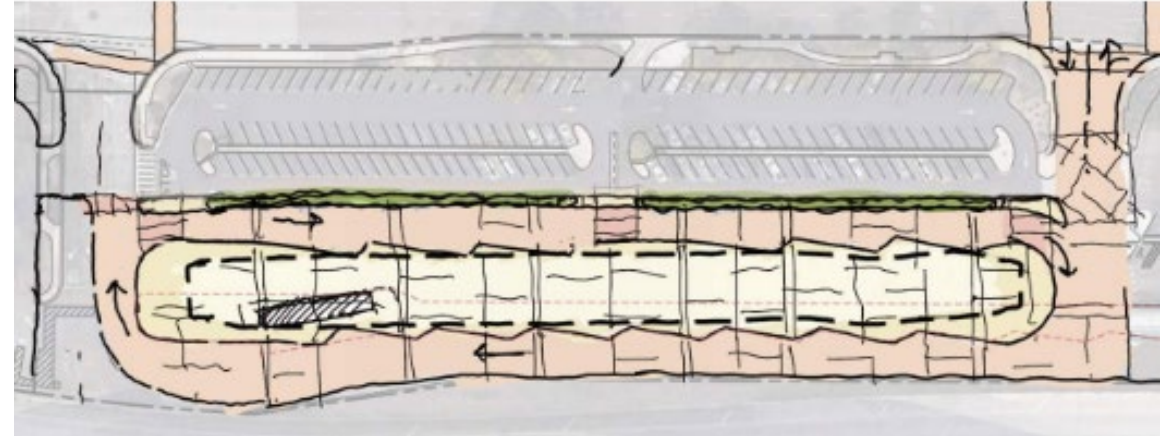
Phase 1: featuring the following potential amenities:

- Covered seating areas with good lighting
- Security features (e.g. cameras, lighting, etc.)
- Travel information and bus signs
- Restrooms

Phase 2: featuring the following potential amenities:

- More landscaping or greenery (e.g., trees, plants, etc.)
- Interactive features like art, water fountains, or play areas
- Noise reduction elements (e.g. sound walls)
- Event space/gathering areas (e.g. farmers market)
- Small retail/café space
- Delivery/parcel storage lockers
- Secure bicycle parking
- Bicycle repair/station

Plan



Zoom Poll Question #3:

What features would make the transit plaza more welcoming and useful for you?



Select your top three (3) in the Zoom Poll:

- A – More Landscaping or greenery
- B – Interactive features (art, fountain, etc.)
- C – Covered seating with good lighting
- D – Security features (cameras, lighting, etc.)
- E – Noise reduction elements (sound wall)
- F – Event space/gathering areas (farmers market)
- G – Small retail/cafe space
- H – Delivery/parcel storage lockers
- I – Secure bicycle parking
- J – Bicycle repair station

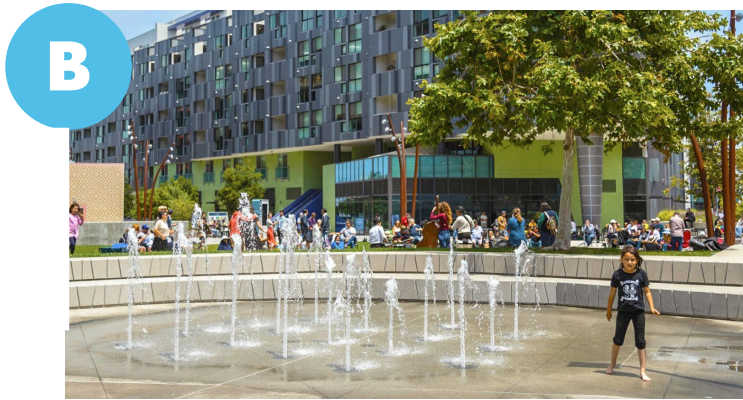
Other? Add your answer to the Q&A button at the bottom of your screen.





A

More landscaping or greener



B

Interactive features



C

Covered seating areas with lighting



D

Noise reduction elements



E

Security features



F



Event spaces/gathering areas

G



Small retail or café space

H



Delivery/parcel storage lockers

I



Secure bicycle parking

J



Bicycle repair station



Design Vision



Zoom Poll Question #4:

What improvements would make the Fullerton Park and Ride site more accessible and easier to use?

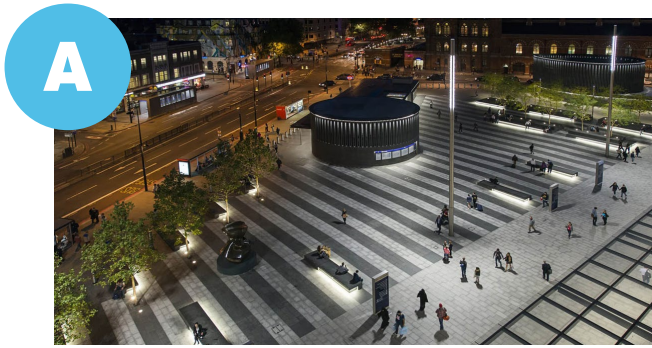


Select your top two (2) in the Zoom Poll:

- A – More accessible pedestrian pathways
- B – Additional crosswalks and improved pedestrian signals on surrounding streets
- C – Better wayfinding signage for transit parking, and nearby destinations
- D – On-street bike lanes
- E – Pick-up/drop-off zones for rideshare and personal vehicles
- F – Accessibility features
- G – Improved lighting

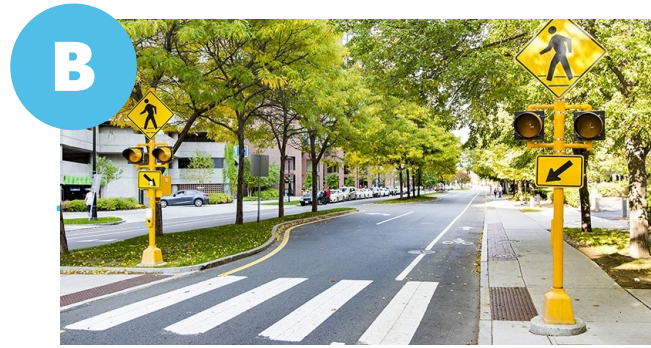
Other? Add your answer to the Q&A button at the bottom of your screen.





A

More accessible pedestrian pathways



B

Additional crosswalks & Signals



C

Better wayfinding signage



D

On-street bike lanes



E

Pick-up/drop-off zones



F

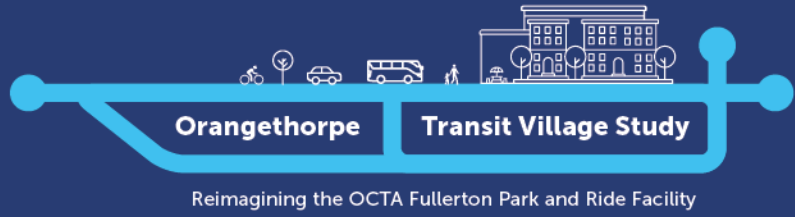
Accessibility features



G

Improved lighting





Current Community Outreach

Public and Stakeholder Engagement Cont.

Phase 2: Trilingual Notification: Feb. 24th to Apr. 7th

Engagement Activities:

- (5) Events and Pop-ups
- Virtual Meeting
- In-person meetings
- Multilingual online and print survey



bit.ly/Fullerton-PnR-Survey

How to Stay Involved

- Take our survey and attend our meetings

Take our Survey!

- Win one of two \$50 prize cards!
- Deadline: Apr. 7th



In-person Community Meeting #2 Wednesday, March 26th 6:00 PM – 8:00 PM

Fullerton Community Center
Classroom 1A

Stay Connected

- Website: www.octa.net/FullertonPnR
- Online Survey: bit.ly/Fullerton-PnR-Survey

Marissa Espino

Public Outreach Section Manager

Mespino@octa.net

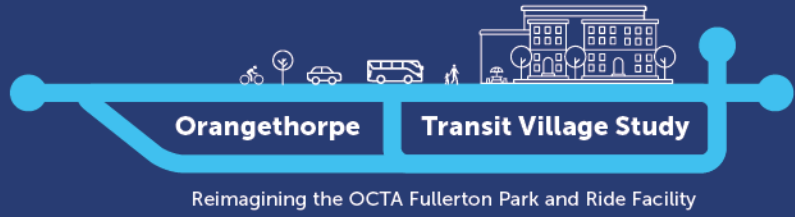
Angel Garfio

Project Manager

agarfio@octa.net

Scan the QR to take our survey!





Q&A Session

How to Participate

You may submit multiple comments/questions, as needed:

Via web

- Verbal Comments: Click Participants > “**raise hand**”
- Type comments: Click the “**Q&A**” function
- State your name and organization (if any)
- When announced, unmute your audio, you can then ask you question(s)
- You will be re-muted once you complete your comment(s)



Via the phone (calling in):

- Press “*9” on your keypad to “raise hand”
- You will be announced by the last four digits of your phone number
- Press “*6” to unmute your audio
- You will be re-muted once you complete your comment(s)

As a reminder, the chat will be used by the team to share information and links to resources.

Next Steps

- **Conceptual Site Plans** – Mid Spring 2025
- **Community Workshop Series #2** – Mid Spring 2025
- **Preliminary Environmental Assessment** – Late Spring 2025
- **Final Report** – Late Summer 2025





Orangethorpe

Transit Village Study

Reimagining the OCTA Fullerton Park and Ride Facility

Thank you!

