

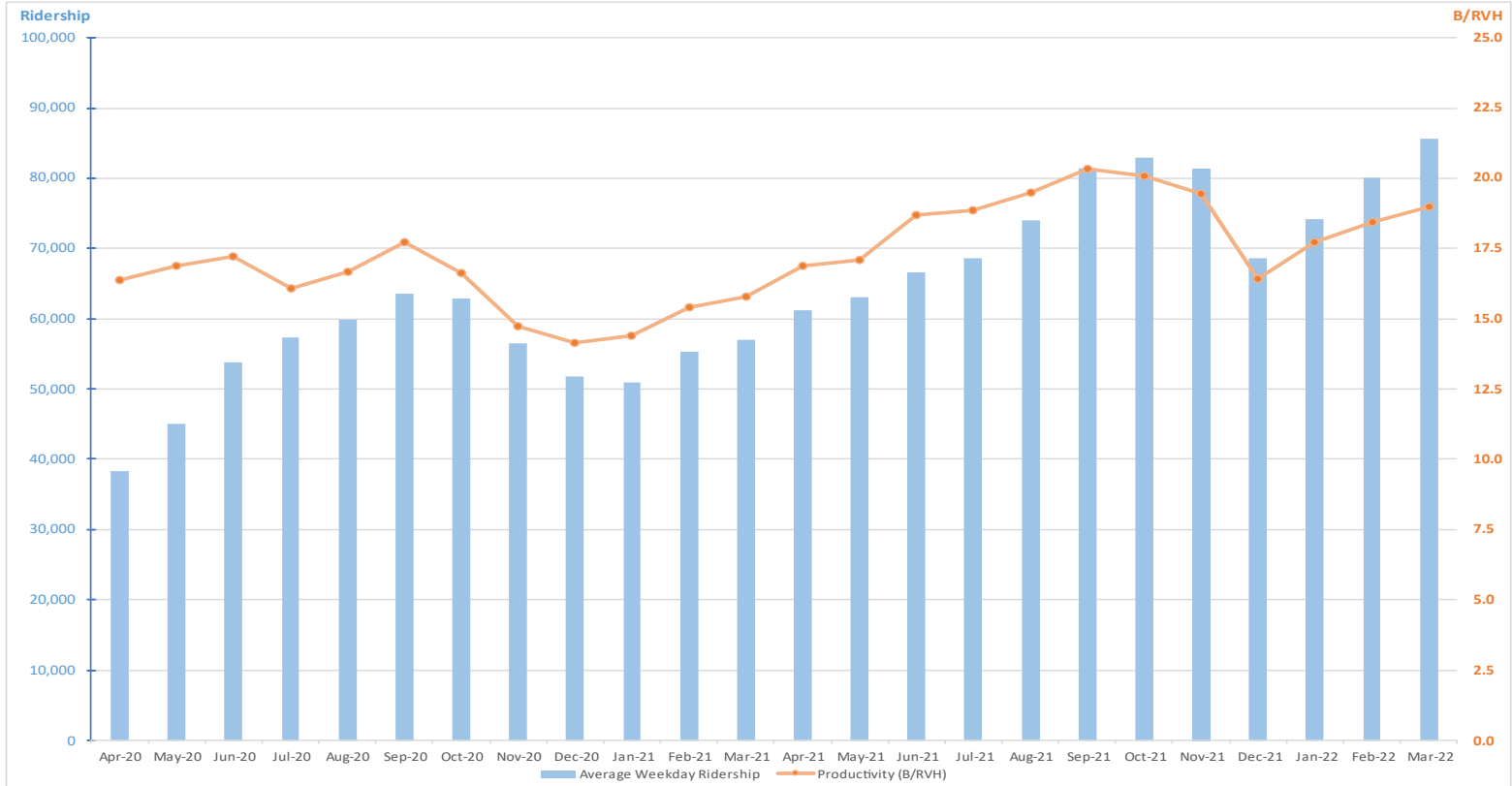


OC Bus Service Update

- **Ridership**
 - Average weekday boardings and productivity as measured by boardings per revenue vehicle hour (B/RVH)
- **On-Time Performance**
 - Measuring service reliability

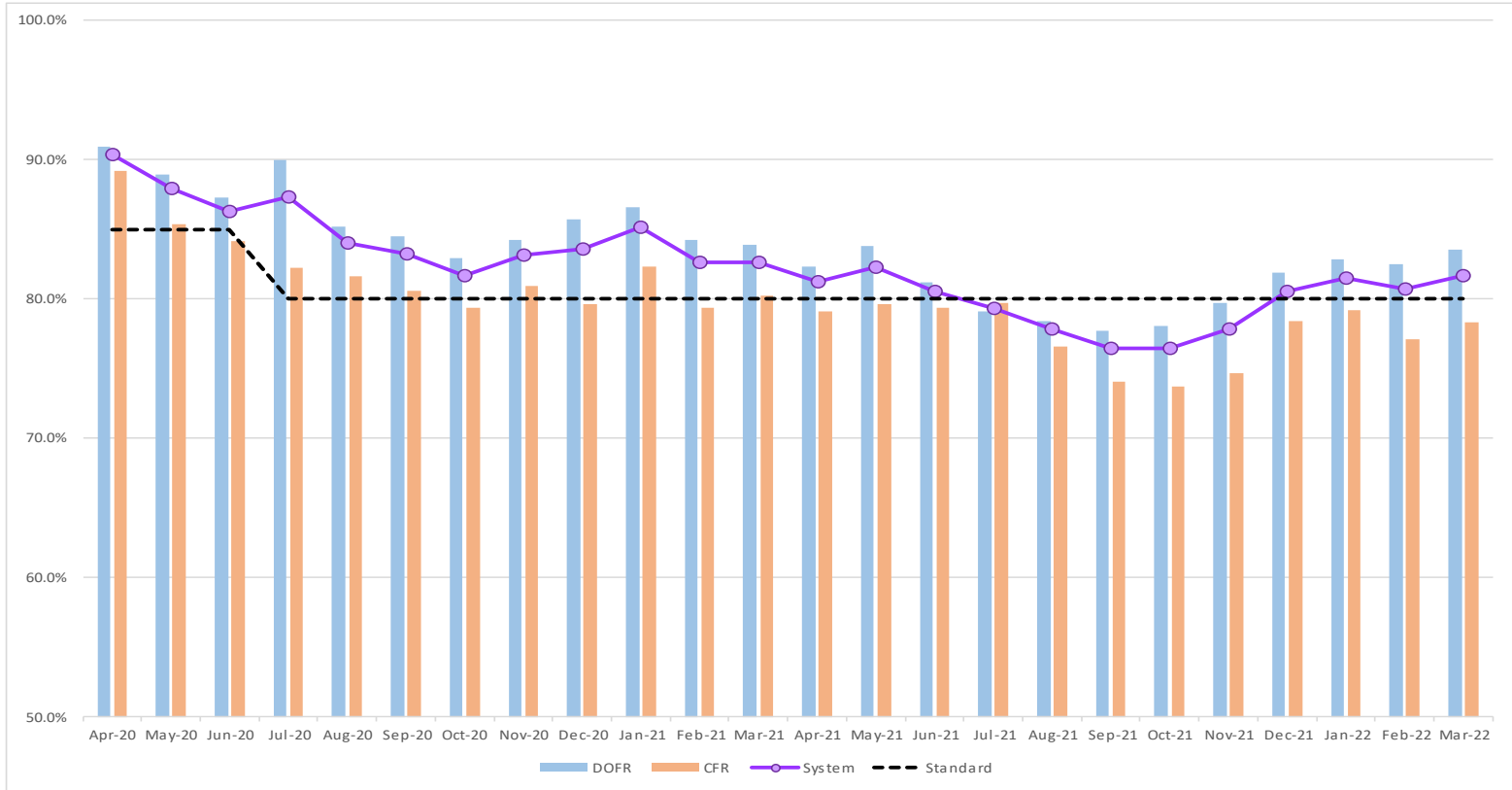
OC BUS RIDERSHIP AND PRODUCTIVITY

(AVERAGE WEEKDAY)



OC BUS ON-TIME PERFORMANCE

(AVERAGE WEEKDAY)





NEXT STEPS

- Continue to Track Service Performance
 - Ridership trends and seasonal patterns
 - On-time performance
- Upcoming Service Changes
 - June 12, 2022
 - October 9, 2022