

# Project Update to CAC Bicycle & Pedestrian Active Transportation Subcommittee

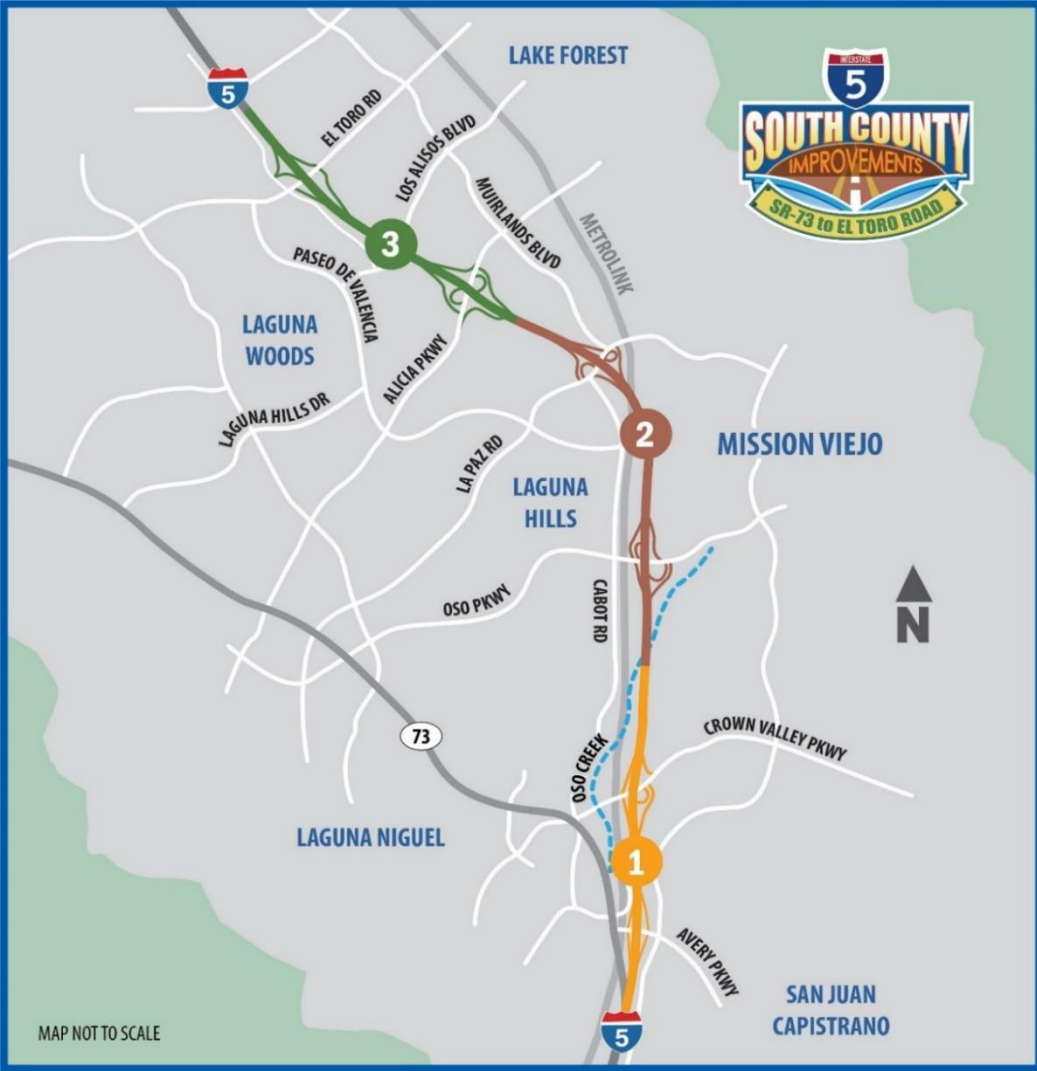
March 21, 2023



# Project Partners



# Project Area & Status

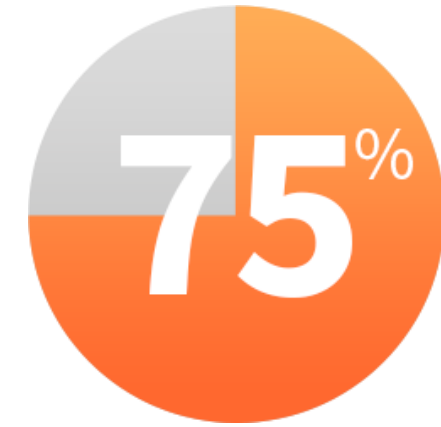


70%

# Avery Parkway Interchange

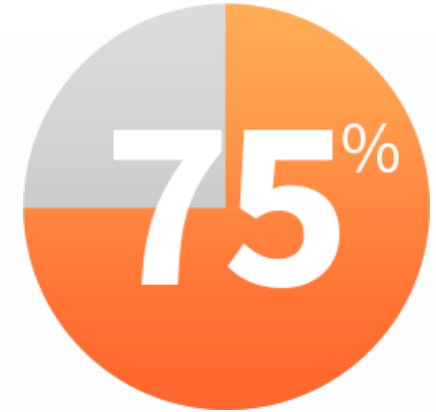


# Avery Parkway Interchange



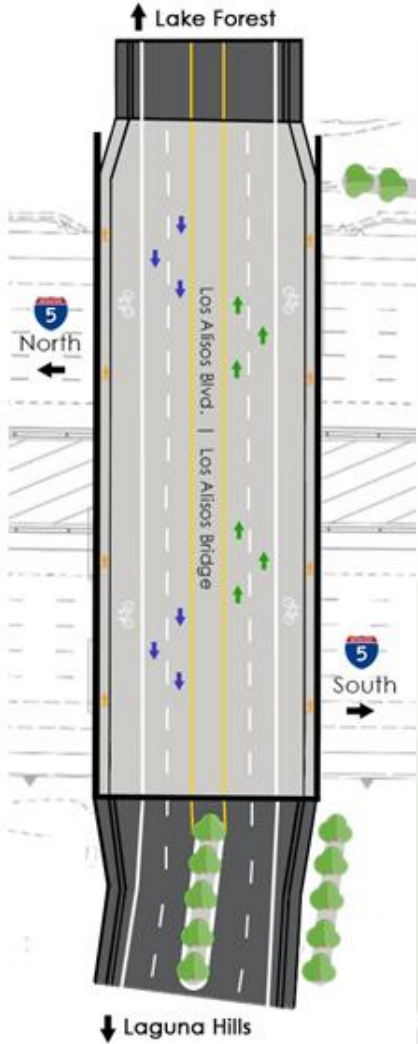
- Completed Stage 1 and Stage 2
- Stage 3 Underway
- 6-Foot Bike Lanes
- Tie-in to Marguerite Parkway & Camino Capistrano
- Sidewalks (Width Range: 5-11 ft)

# La Paz Road Interchange



- Completed Stage 1 and Stage 2
- Stage 3 Underway
- 5-Foot Wide Bike Lanes
- Tie-in to La Paz Road (westbound and eastbound)
- 8-Foot Wide Sidewalks

# Los Alisos Boulevard Bridge



# Aliso Creek Bicycle and Hiking Trail

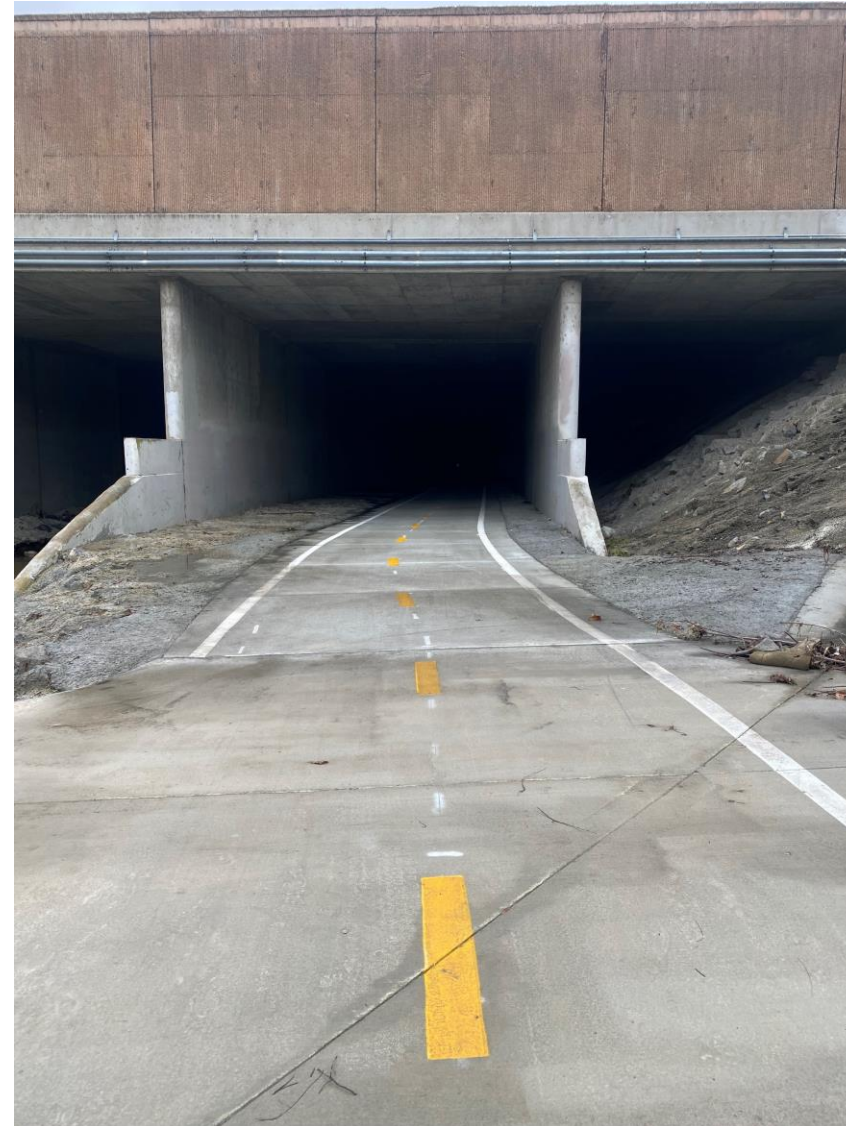


**Aliso Creek  
Bikeway and  
Aliso Creek  
Hiking &  
Riding Trail**

**NOW  
OPEN!**



**SOUTH COUNTY  
IMPROVEMENTS**  
SR-73 to EL TORO ROAD





# Aliso Creek Bicycle and Hiking Trail




# Aliso Creek Bicycle and Hiking Trail



# Aliso Creek Bicycle and Hiking Trail



# Upcoming Temporary Closure & Detour



**OC I-5 South County**

**intro**

The I-5 South County Improvement Projects include two freeway segments along I-5: SR-73 to El Toro R

**Page** · Transportation Service

Orange County Transportation Authority is responsible for this Page

600 S Main St, Orange, CA, United States, California

(714) 560-5573


i5SouthCounty@octa.net

[octa.net/i5south](https://octa.net/i5south)

Always open

Price Range · \$

**Photos** See all photos




View 1 more comment

**OC I-5 South County**  
3d · 🌐

**BIKEWAY CLOSURE ALERT:**  
The Aliso Creek Bikeway will close temporarily on weekdays from 5:30 a.m. to 3 p.m. beginning Monday, March 20 for up to two weeks, as crews perform maintenance. Please watch for bikeway detour signage.

✔ Don't miss important project closure information or progress updates. Sign up for weekly alerts at <https://octa.net/i5south/stayconnected>

[Or... See more](#)



**Aliso Creek Bikeway  
Temporary Closure**

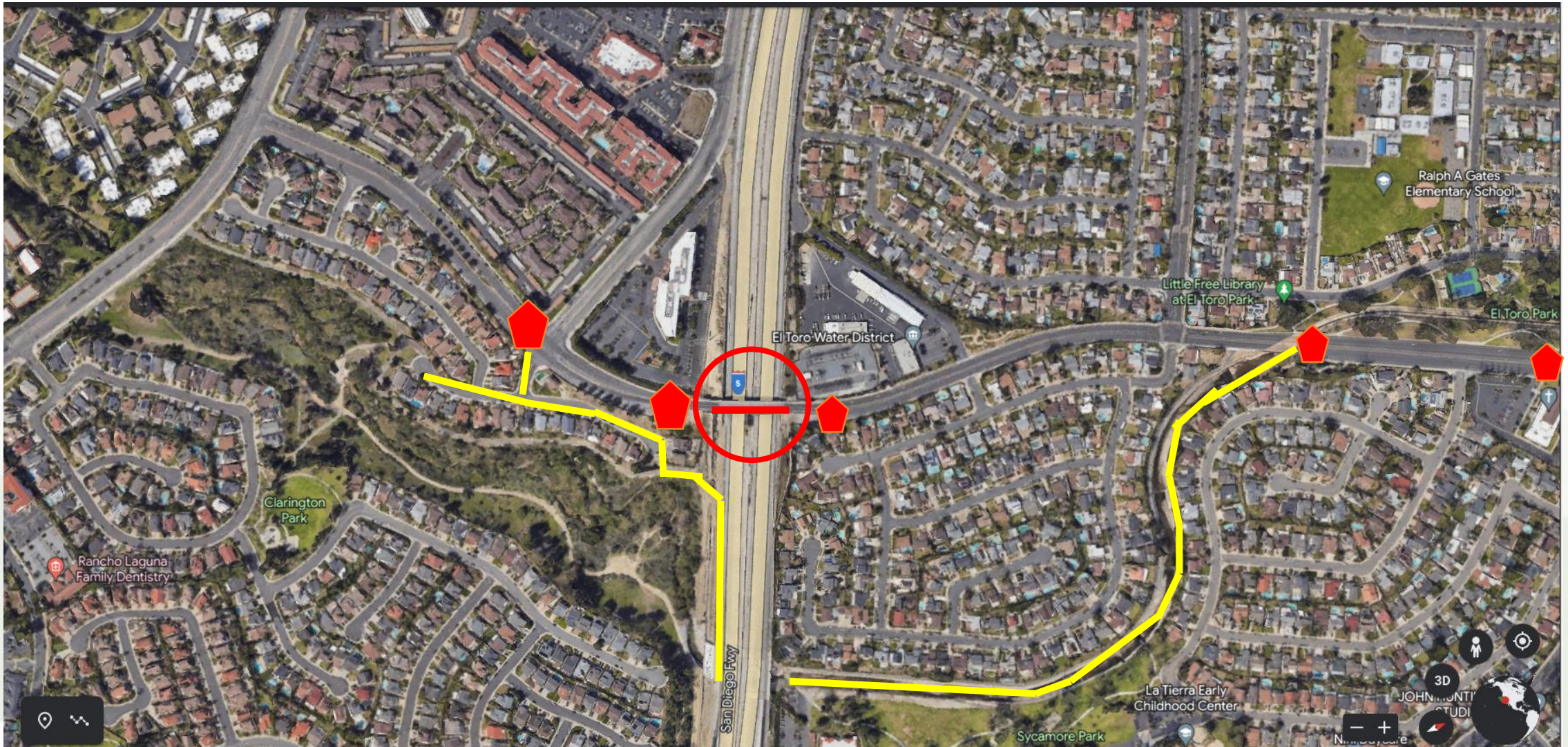
Beginning March 20  
(Up to Two Weeks)  
Weekdays - 5:30 a.m. to 3 p.m.

**OC I-5 South County**

# 10-Day Closure & Detour



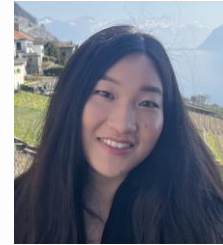
# One-Year Closure & Detour



# Staff and Contact Information



Fernando Chavarria  
(714) 560-5306  
fchavarria@octa.net



Melody Yang  
(714) 560-5061  
myang@octa.net



[octa.net/i5SouthCounty](https://octa.net/i5SouthCounty)



[i5SouthCounty@octa.net](mailto:i5SouthCounty@octa.net)



[@OCi5SouthCounty](https://www.instagram.com/OCi5SouthCounty)



[Facebook.com/OCi5SouthCounty](https://www.facebook.com/OCi5SouthCounty)

