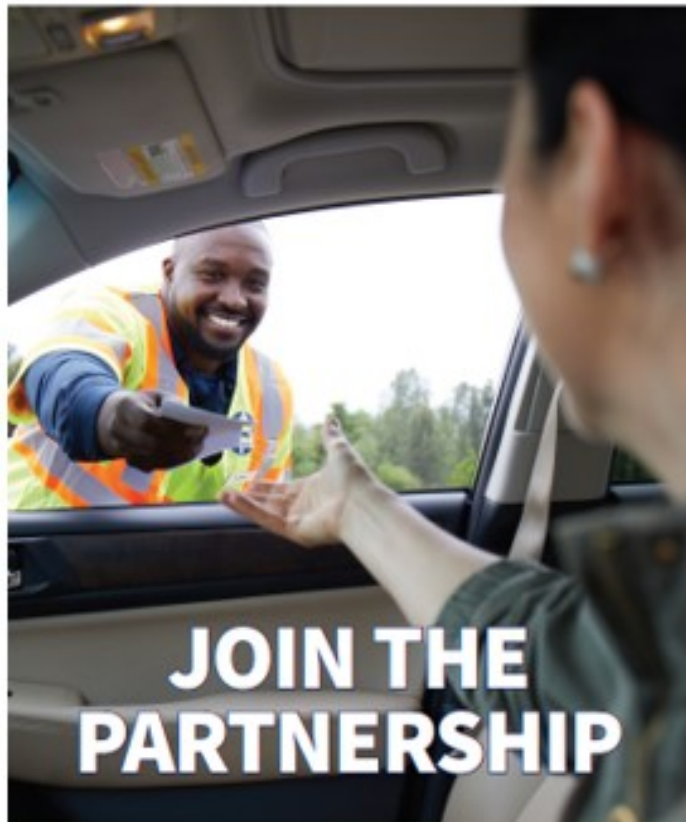


CALIFORNIA

FREEWAY SERVICE PATROL



JOIN THE PARTNERSHIP



What is Freeway Service Patrol (FSP)

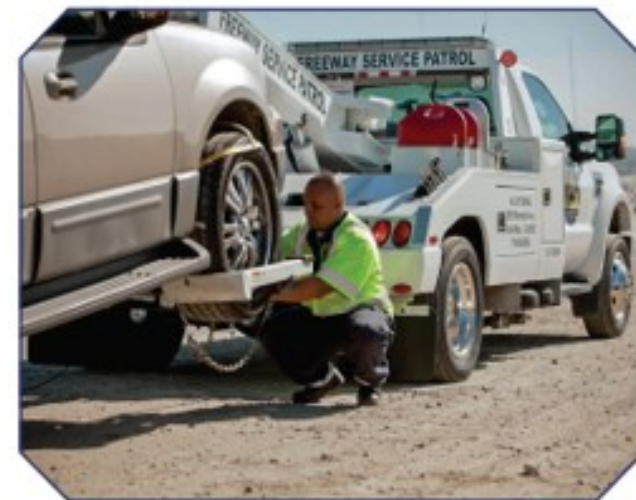
The FSP program is a congestion mitigation program designed to provide benefits to the motoring public by reducing hours of congestion delay, improving air quality, and enhancing freeway safety.

How does the FSP program operate?

The FSP program is a successful public-private partnership program that has been in place for over 30 years. Three government agencies participate with the following roles: the California Department of Transportation (Caltrans) is responsible for allocating state funds and providing data analysis; the California Highway Patrol (CHP) is responsible for field oversight and dispatching; the Local Agencies are responsible for project management and the procurement of towing services from our private partners. The FSP Drivers rove the freeways looking for motorists to assist and quickly resolve their issue or tow them to a safe location.

How is the FSP program funded?

The FSP program is primarily funded by Caltrans allocations from the State Highway Account and from the Road Repair and Accountability Act of 2017 (SB1). The local agencies are then required to provide a percentage of matching funds.



How can private tow companies participate?

Each local agency releases procurements that allow tow contractors to bid for services within a geographic area. This procurement process varies between agencies, thus you are encouraged to contact the local agency to get an understanding of the timing and minimum qualifications.

Is the procurement process complicated?

The process can be complex for tow companies that are new to the program. Please contact your local agency for support and more information.

How do private tow companies get reimbursed?

Local agency sponsors pay their contracted tow companies hourly rates bid by the tow companies. Tow companies are paid for all approved hours, not by the services provided, providing consistent and predictable revenue to contracted tow companies.

Are there differences between the different local programs?

Yes, the different programs vary slightly by region to meet local program needs. For example, one agency may allow the use of flatbeds or service trucks, while another may require wreckers. The Partners' roles and basic structure of the programs remains the same throughout the state.



**HELP KEEP
THE FREEWAYS
MOVING**



STATEWIDE STATISTICS

- ▶ Over 675,000 annual assists statewide
- ▶ Over 200 weekday beats statewide
- ▶ 9.6 million congestion hours of delay saved statewide

CALIFORNIA FREEWAY SERVICE PATROL PROGRAM MAP



PROGRAM LOCATIONS BY COUNTY

- | | |
|--------------------|----------------------------|
| 1. El Dorado | 9. San Bernardino |
| 2. Fresno | 10. San Diego |
| 3. Los Angeles | 11. San Francisco Bay Area |
| 4. Monterey | 12. San Joaquin |
| 5. Orange | 13. San Luis Obispo |
| 6. Placer | 14. Santa Barbara |
| 7. Riverside | 15. Santa Cruz |
| 8. Sacramento/Yolo | 16. Ventura |



LOCAL AGENCY CONTACT INFORMATION

El Dorado County Transportation Commission
edctc.org

Fresno Council of Governments
fresnocog.org, ph. 599-233-4148

Los Angeles METRO
metro.net/riding/fsp

Transportation Agency for Monterey County
tamcmonterey.org/freeway-service-patrol

Orange County Transportation Authority
octa.net/motoristservices

Placer County Transportation Planning Agency
pctpa.net

Riverside County Transportation Commission
rtc.org/fsp

Sacramento Transportation Authority
sacta.org/fsp, ph. 916-323-0080

San Bernardino County Transportation Authority
gosbcta.com/fsp

San Diego Association of Governments
511sd.com/MotoristAid/FreewayServicePatrol

San Francisco Bay Area MTC SAFE
fsp-bayarea.org, email: fsp@bayareametro.gov

San Joaquin Council of Governments
sjcog.org/fsp

San Luis Obispo Council of Governments
slocog.org/fsp

Santa Barbara County Association of Governments
sbcag.org/freeway-service-patrol

Santa Cruz County Regional Transportation Commission
sccrtc.org/services/motorist

Ventura County Transportation Commission
goventura.org/getting-around/fsp