



Interstate 5 Improvement Project from Interstate 405 to SR-55

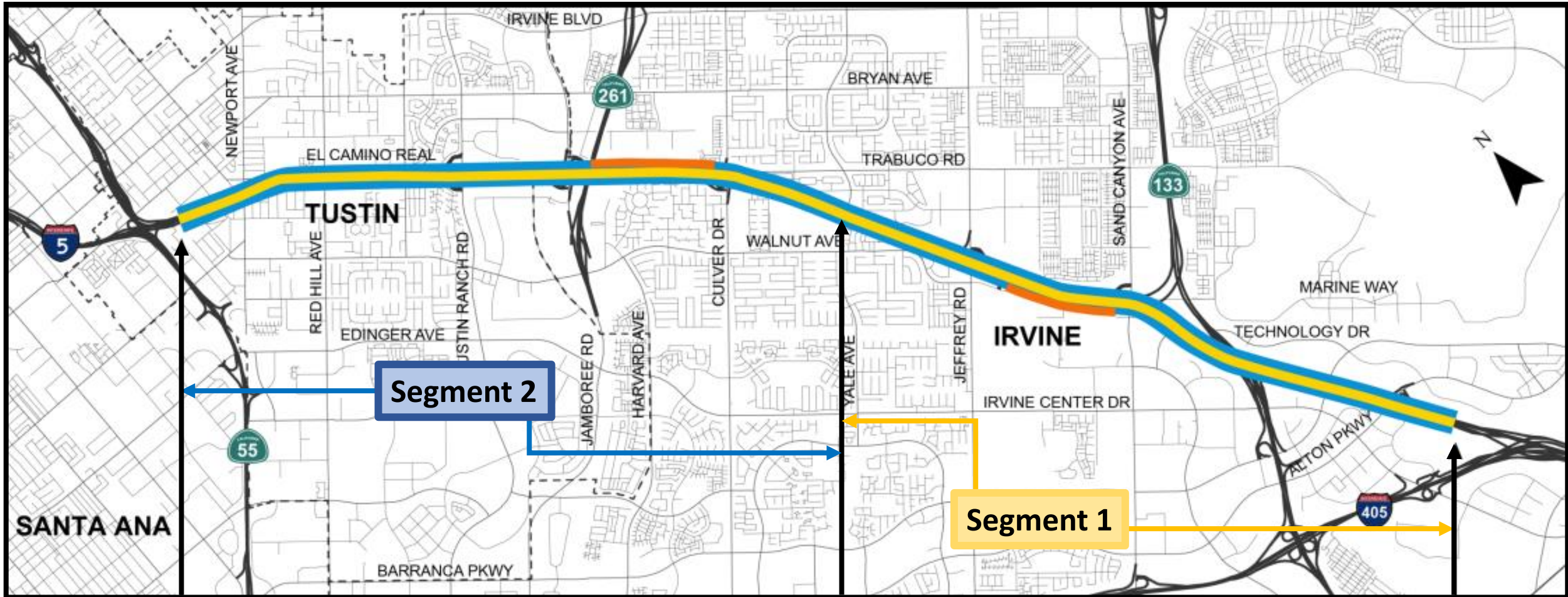
Presented To: Citizens Advisory Committee (CAC)

Bicycle/Pedestrian Subcommittee

June 18, 2024

Niall Barrett, Capital Programs
Josue Vaglienty, Capital Programs

Project Limits for Final Design Phase



LEGEND



General Purpose Lane



Continuous HOV Access



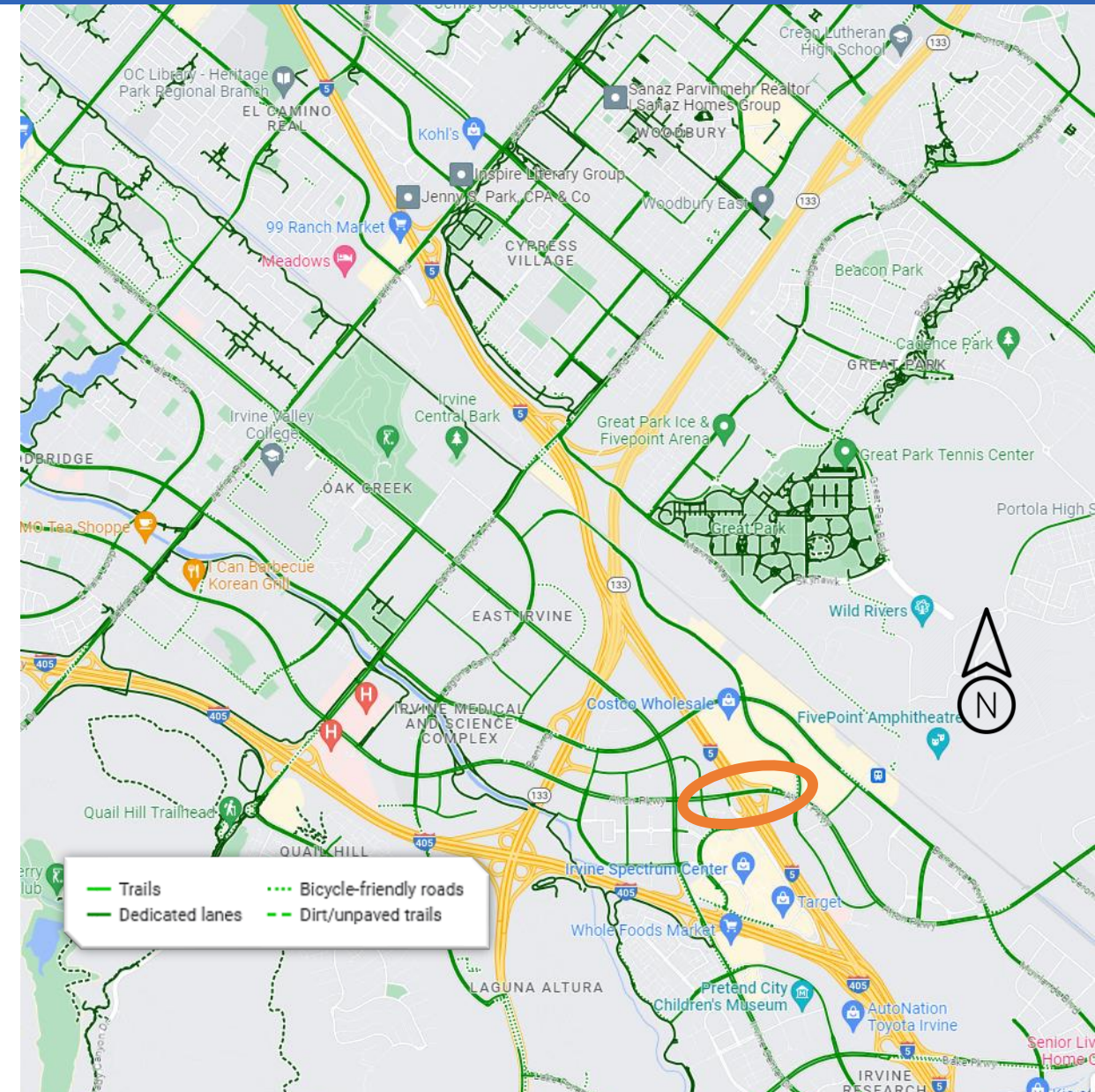
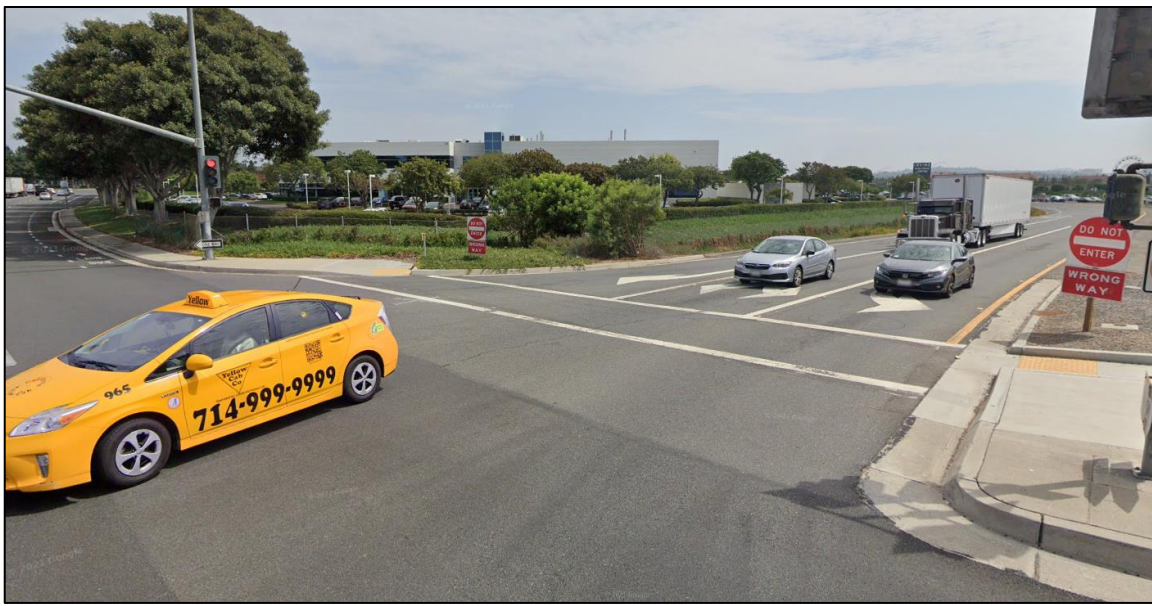
New Auxiliary Lane

Project Agency Stakeholders



**Project Development Team (PDT) Meetings are ongoing
with primary stakeholders**

Ped and Bike Facilities at Alton Pkwy (Exist)



Ped and Bike Facilities at Alton Pkwy



- Maintain **existing sidewalks** that are ADA-compliant
- Refresh **striping** for crosswalks
- Introduce green bike pavement markings within Caltrans R/W
- Introduce green ladder (pavement markings) within Caltrans R/W



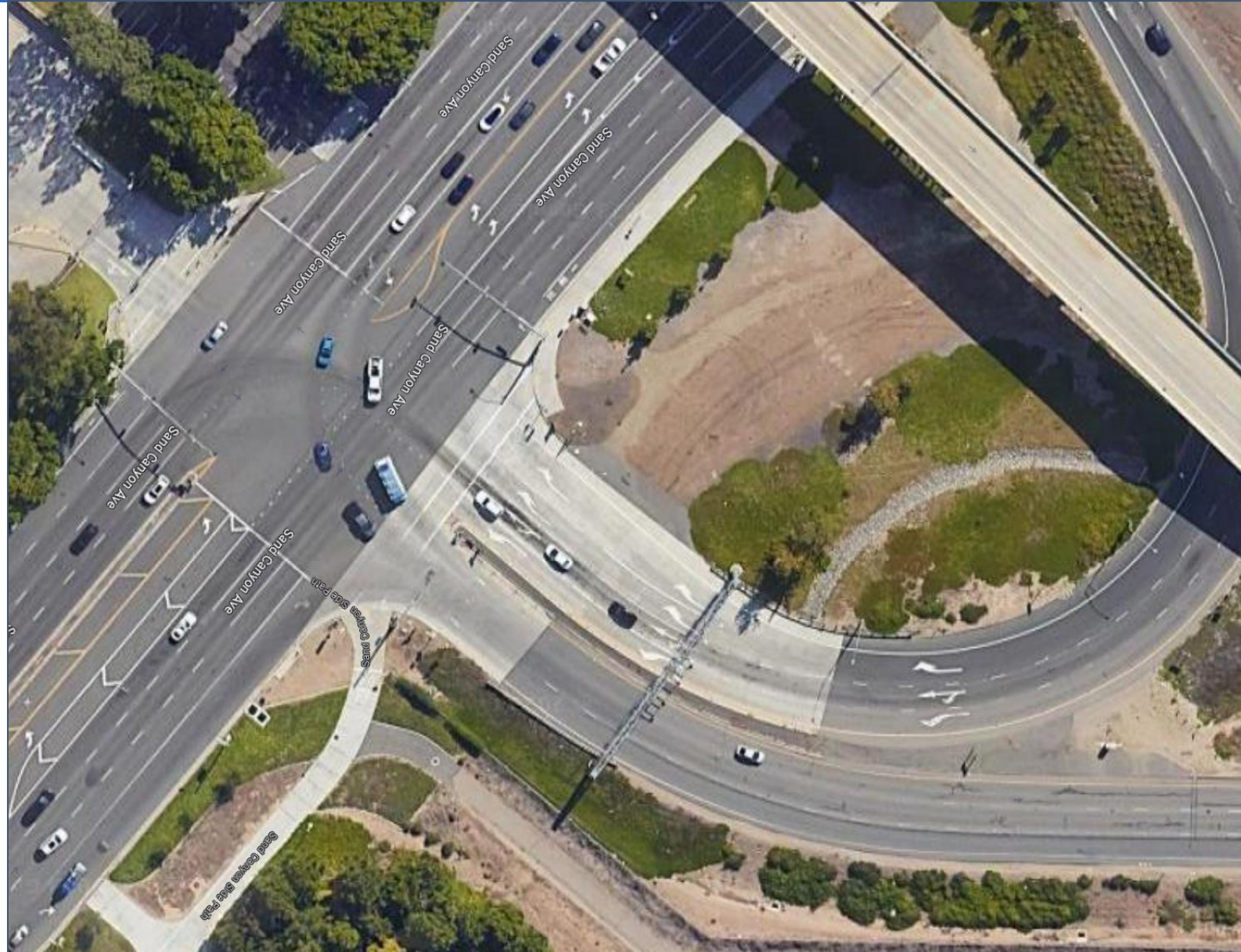
Ped and Bike Facilities at Sand Cyn Ave (Exist)



Ped and Bike Facilities at Sand Cyn Ave



- Maintain **existing sidewalks** that are ADA-compliant
- Refresh **striping** for crosswalks
- Introduce green bike pavement markings within Caltrans R/W
- Introduce green ladder (pavement markings) within Caltrans R/W



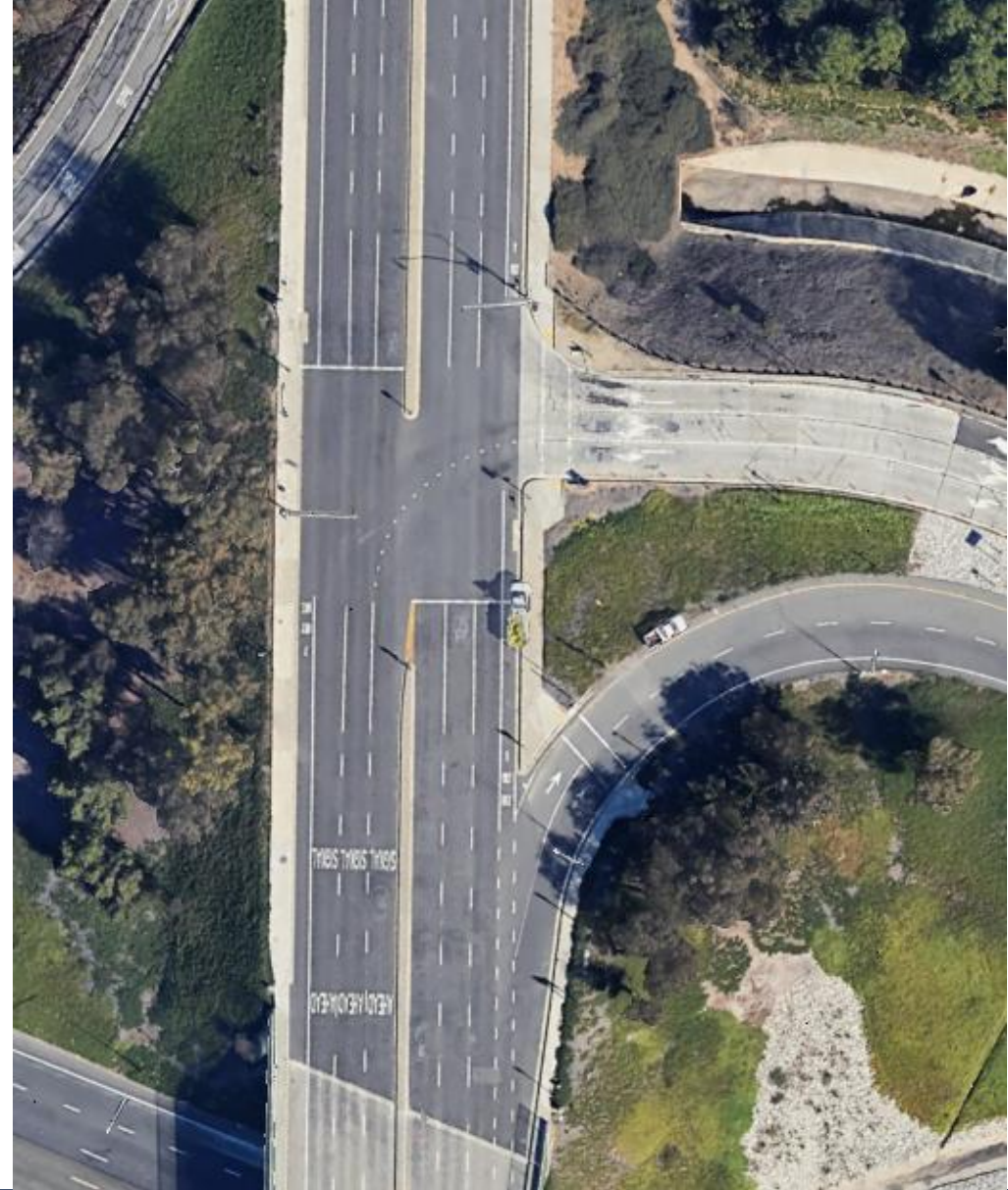
Ped and Bike Facilities at Jeffrey Rd (Exist)



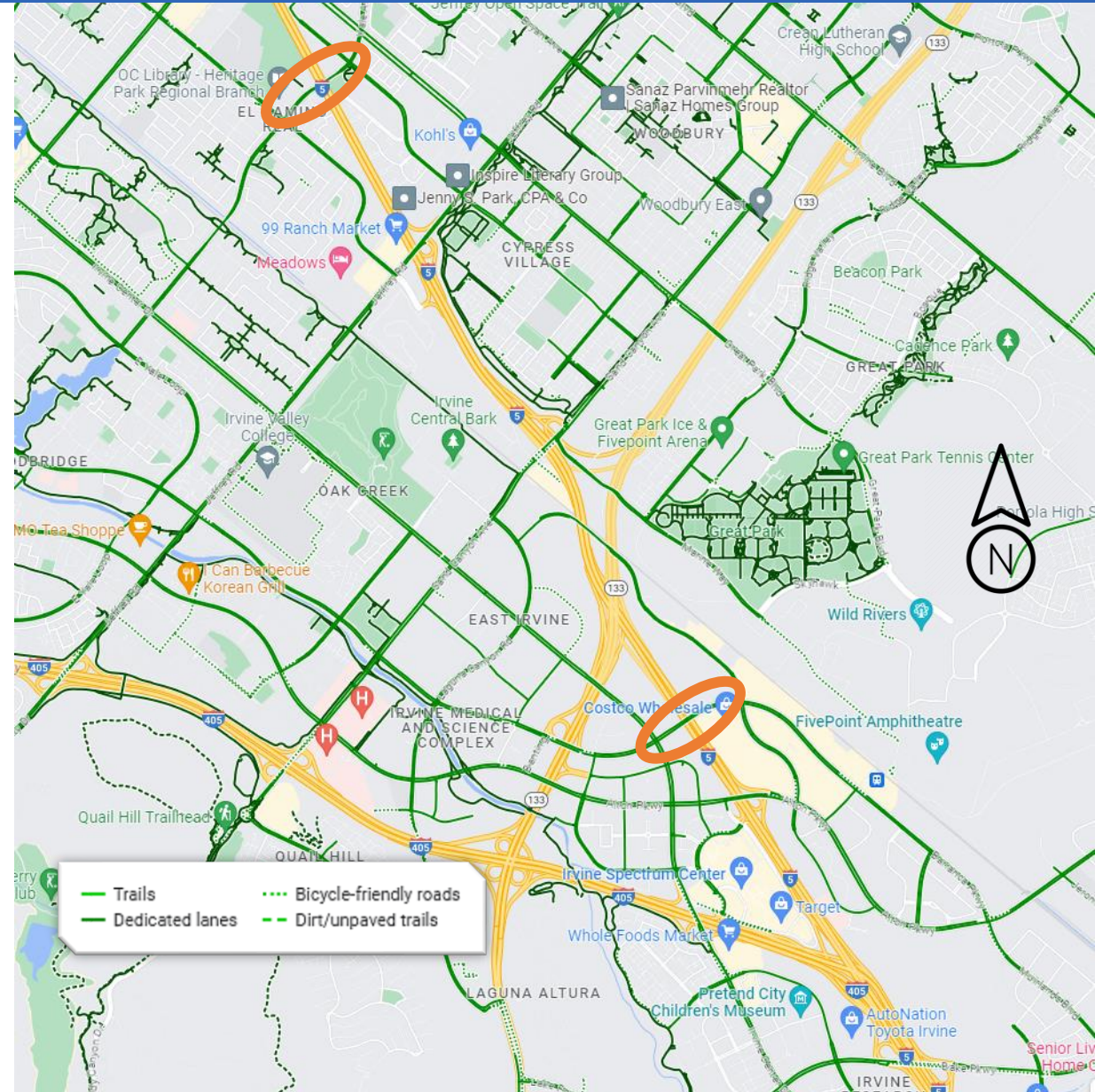
Ped and Bike Facilities at Jeffrey Rd



- **Reconstruct curb returns** and ADA-curb ramps at NB Off-Ramp
- Refresh **striping** for crosswalks
- Introduce green bike pavement markings within Caltrans R/W
- Introduce green ladder (pavement markings) within Caltrans R/W



Ped and Bike Facilities at Yale/Barranca (Exist)

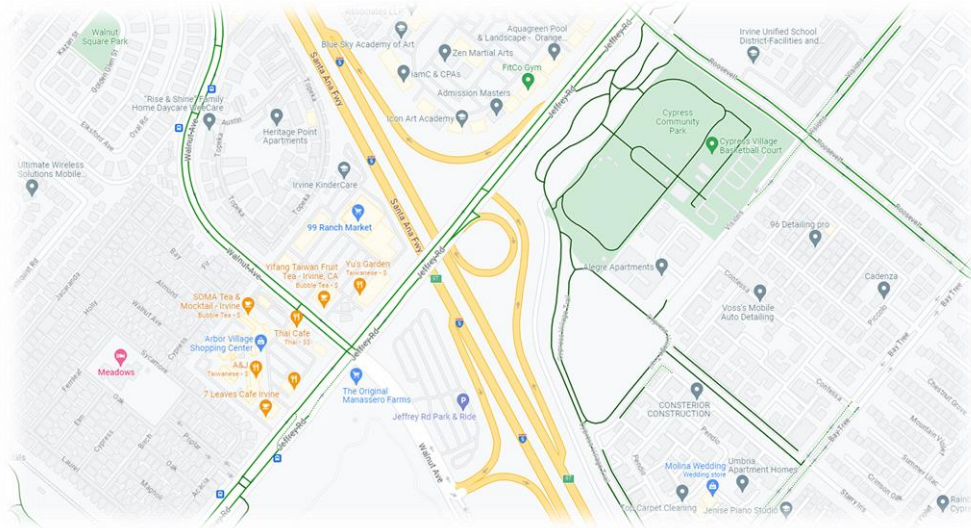


Ped and Bike Facilities at JOST (City of Irvine)



Jeffrey Open Space Trail (JOST) - Bridge

- Connecting existing trail along Jeffrey Road across freeway
- Connect trail from Jeffrey road to Walnut Ave



Source: City of Irvine

Ped and Bike Facilities at JOST (City of Irvine)



Source: City of Irvine

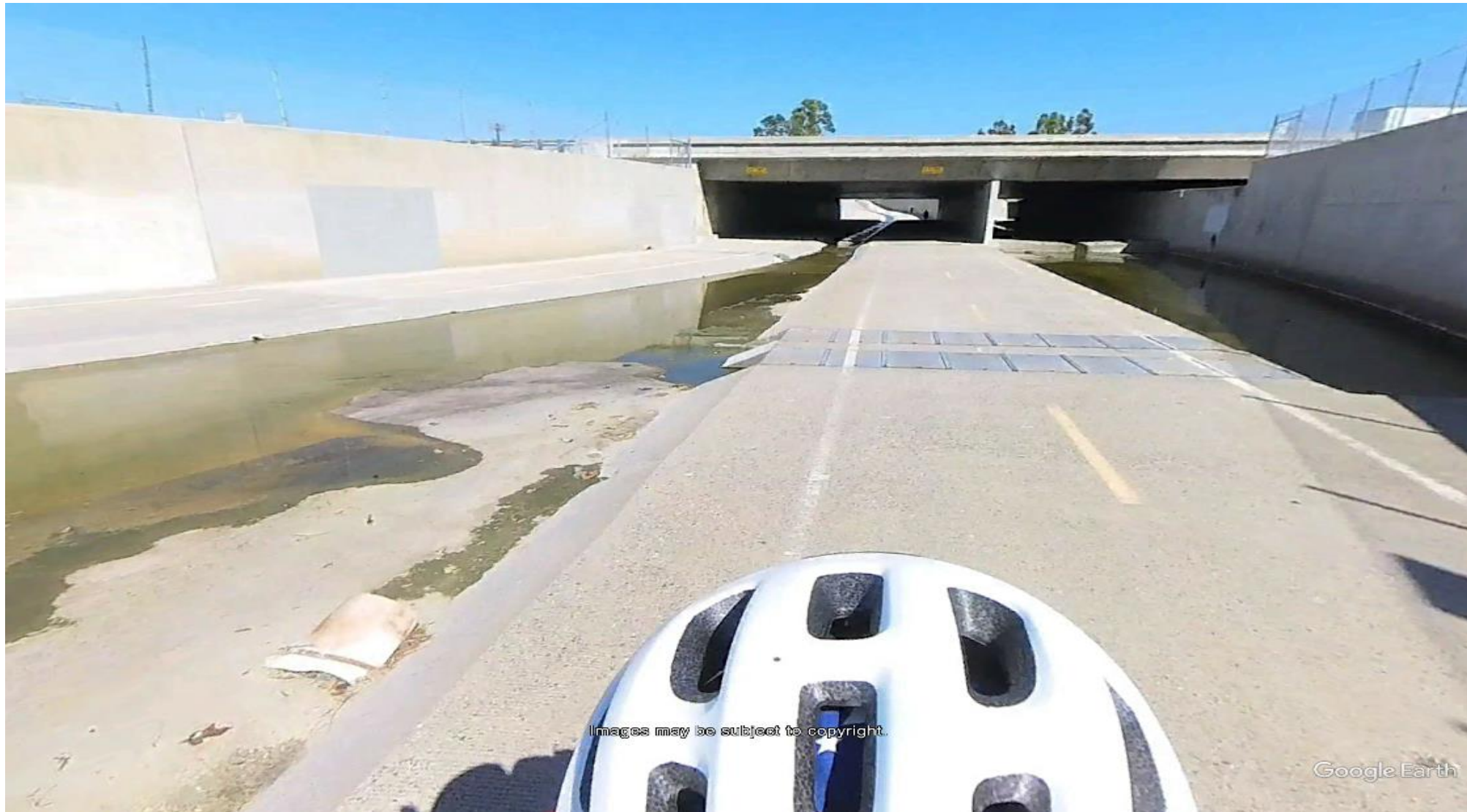
Exist. Ped/Bike at Culver Dr. (looking east)



Exist Ped/Bike at Culver Dr. (looking west)



Exist Ped/Bike at Peters Cn. (looking east)



Images may be subject to copyright.

Google Earth

Exist Ped/Bike at Tustin Ranch Rd.



Exist. Ped/Bike at Red Hill Ave.



Exist. Ped/Bike at Newport Blvd.



Proposed Ped/Bike at Newport Blvd.



All tools E-Sign

Find text or tools 🔍 📄 🖨️ ✉️

- ☑️
- 📏
- 🔍
- 📄
- 🖨️
- ✉️

T OF
EN TED ON
AC S AL
CURB
EAR
F S
AS
US F THE
AY
BE LED

10. **RC** ALL EXISTING BACKPLATES AND INSTALL NEW BACKPLATES FROM THE SAME MANUFACTURER AS THE EXISTING SIGNAL HEADS. ALL NEW BACKPLATES MUST HAVE PREFABRICATED 2-INCH TYPE XI FLUORESCENT YELLOW RETROREFLECTIVE BORDERS. REPLACEMENT KIT WITH 2-INCH TYPE XI FLUORESCENT YELLOW RETROREFLECTIVE STRIP IS NOT ALLOWED FOR INSTALLATION.
11. EQUIPMENT GROUNDING (G) CONDUCTOR MUST HAVE GREEN COLORED INSULATION.
12. ALL EQUIPMENT IN STANDARD AND EQUIPMENT SCHEDULE IS NEW.
13. ALL CABLES/CONDUCTORS AND CONDUITS ARE NEW.

Dist	COUNTY	ROUTE	POST MILES TOTAL PROJECT
12	Ora	5, 55	29.6 R6.4/10.3

REGISTERED CIVIL ENGINEER *[Signature]* DATE 8-5-21

August 23, 2021
PLANS APPROVAL DATE

THE STATE OF CALIFORNIA OR ITS OFFICERS OR AGENTS SHALL NOT BE RESPONSIBLE FOR THE ACCURACY OR COMPLETENESS OF SCANNED COPIES OF THIS PLAN SHEET.

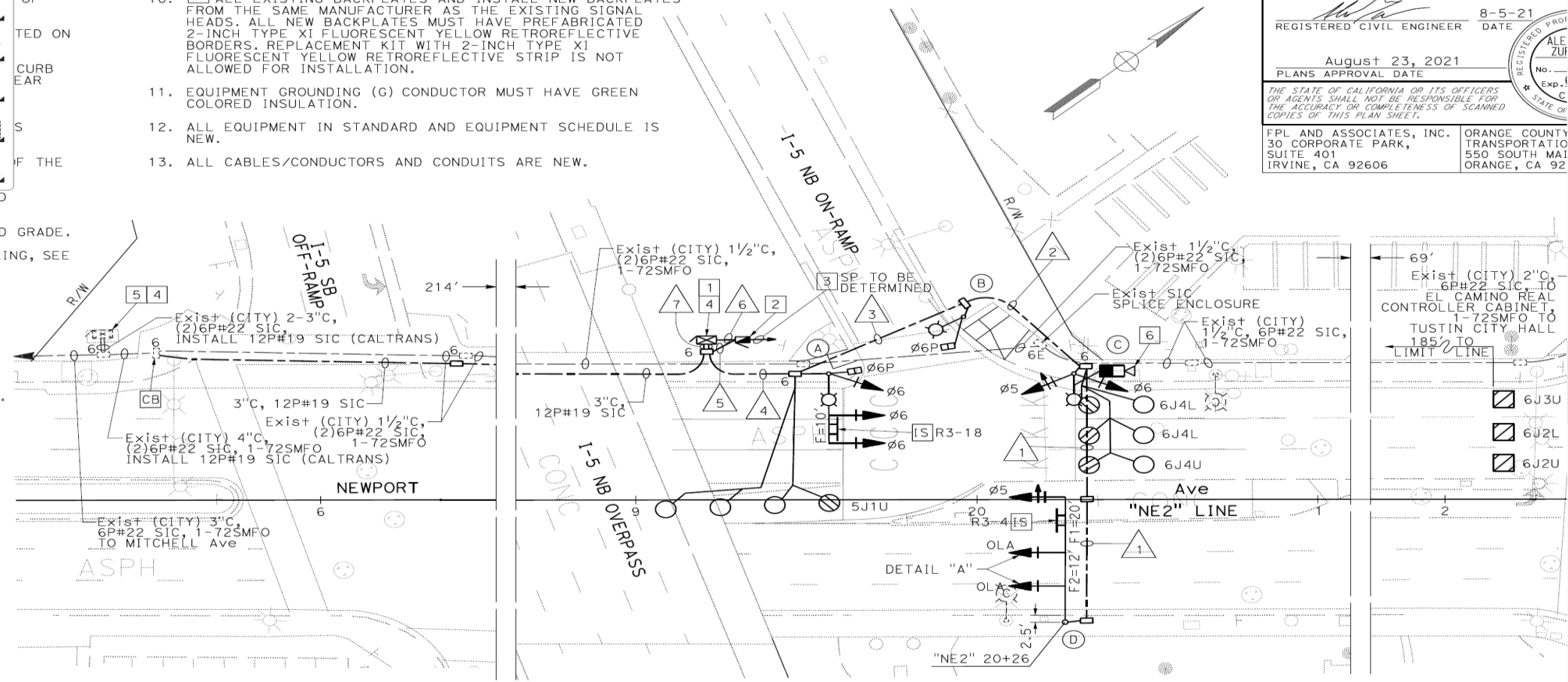
FPL AND ASSOCIATES, INC. 30 CORPORATE PARK, SUITE 401 IRVINE, CA 92606

ORANGE COUNTY TRANSPORTATIO 550 SOUTH MAIN ORANGE, CA 92

NISHED GRADE.
LABELING, SEE
RAMP

ERIES.
MENT
IG
ERN
LER
T Ave
OLLER

2



UIT SCHEDULE
34.00 x 22.00 in

PHASE DIAGRAM

LEGEND (THIS SHEET ONLY)

- 4
- 5
- 🔄
- 📄
- 🖨️
- ✉️

Anticipated Milestone Schedule



Milestone	I-5 (Segment 1)	I-5 (Segment 2)
95% PS&E Submittal	July 2024	March 2024 (Actual)
100% PS&E Submittal	November 2024	August 2024
Ready-To-List (RTL)	May 2025	March 2025
Caltrans Advertisement	December 2025	August 2025
Begin Construction	Spring 2026	February 2026
Complete Construction	Late 2029	Late 2029

**Dates are subject to change*

