



# Update on Interstate 5 Widening Project Between State Route 73 and El Toro Road





## Project Segments

### Segment 1

State Route 73 to Oso Parkway

### Segment 2

Oso Parkway to Alicia Parkway

### Segment 3

Alicia Parkway to El Toro Road

**Total length: 6.5 miles**

**Total estimated cost: \$580m  
(all projects and phases)**

## Local Cities

Mission Viejo, Laguna Niguel

Mission Viejo, Laguna Hills

Laguna Hills, Laguna Woods,  
Lake Forest

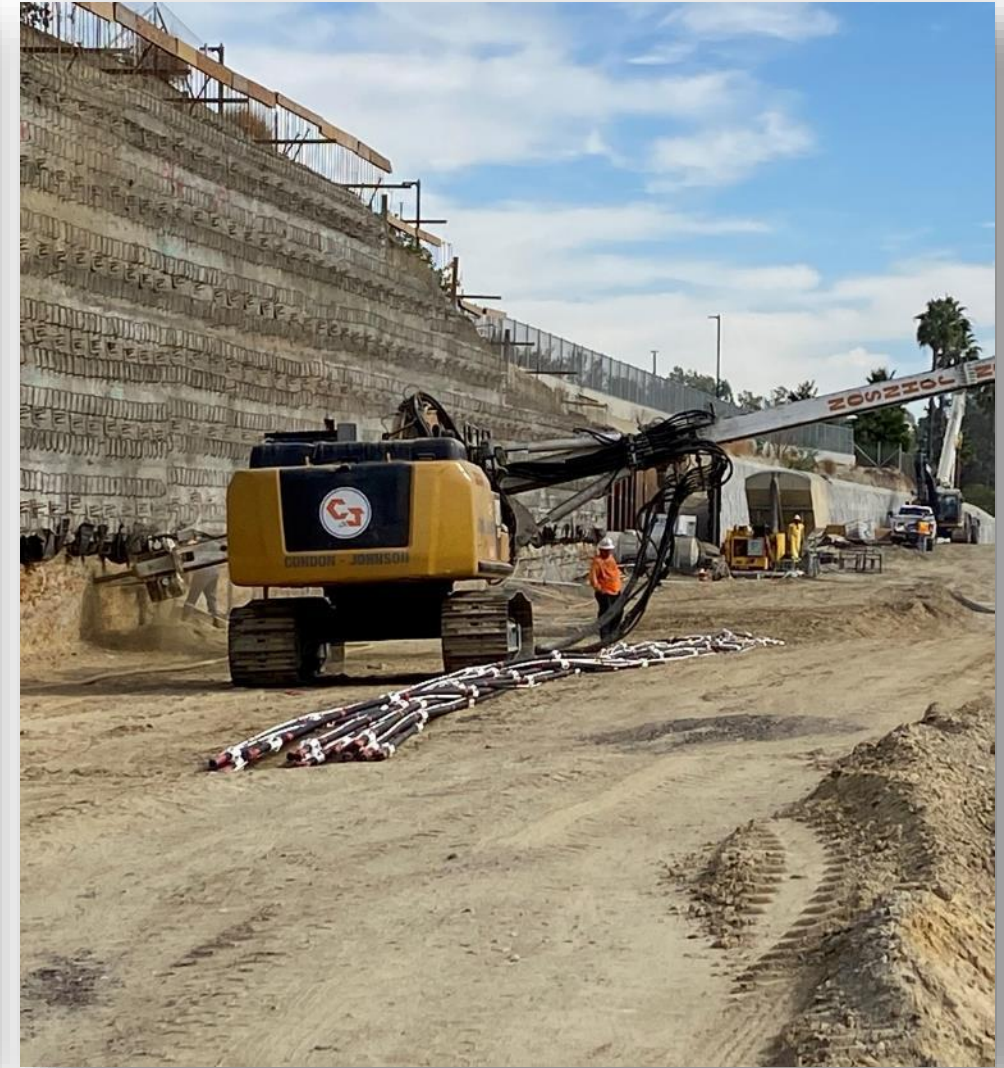
- 1** Add one general purpose lane in both directions from Avery Parkway to Alicia Parkway
- 2** Extend second high-occupancy vehicle (HOV) lane in both directions from Alicia Parkway to El Toro Road
- 3** Reconstruct Avery Parkway and La Paz Road interchanges, and Los Alisos Boulevard overcrossing
- 4** Reconstruct and add auxiliary lanes
- 5** Realign and/or improve on- and off-ramps
- 6** Convert existing HOV lanes to continuous access throughout the project area

# Estimated Construction Schedule



Segment	Estimated Schedule
<b>Segment 2</b> Oso Parkway to Alicia Parkway	<b>May 2019 – Late 2023</b> <i>Under Construction</i>
<b>Segment 1</b> State Route 73 to Oso Parkway	<b>February 2020 – Early 2025</b> <i>Under Construction</i>
<b>Segment 3</b> Alicia Parkway to El Toro Road	<b>January 2021 – Mid-2024</b> <i>Under Construction</i>

# Segment 2 – Current Activities



# La Paz Road Interchange



- Increase vertical clearance to 15 feet
- Total number of thru lanes
  - Three eastbound (EB) thru lanes
  - Three westbound (WB) thru lanes
- New five-foot bike lanes and widen existing sidewalks

# Segment 1 – Current Activities



# Avery Parkway Interchange



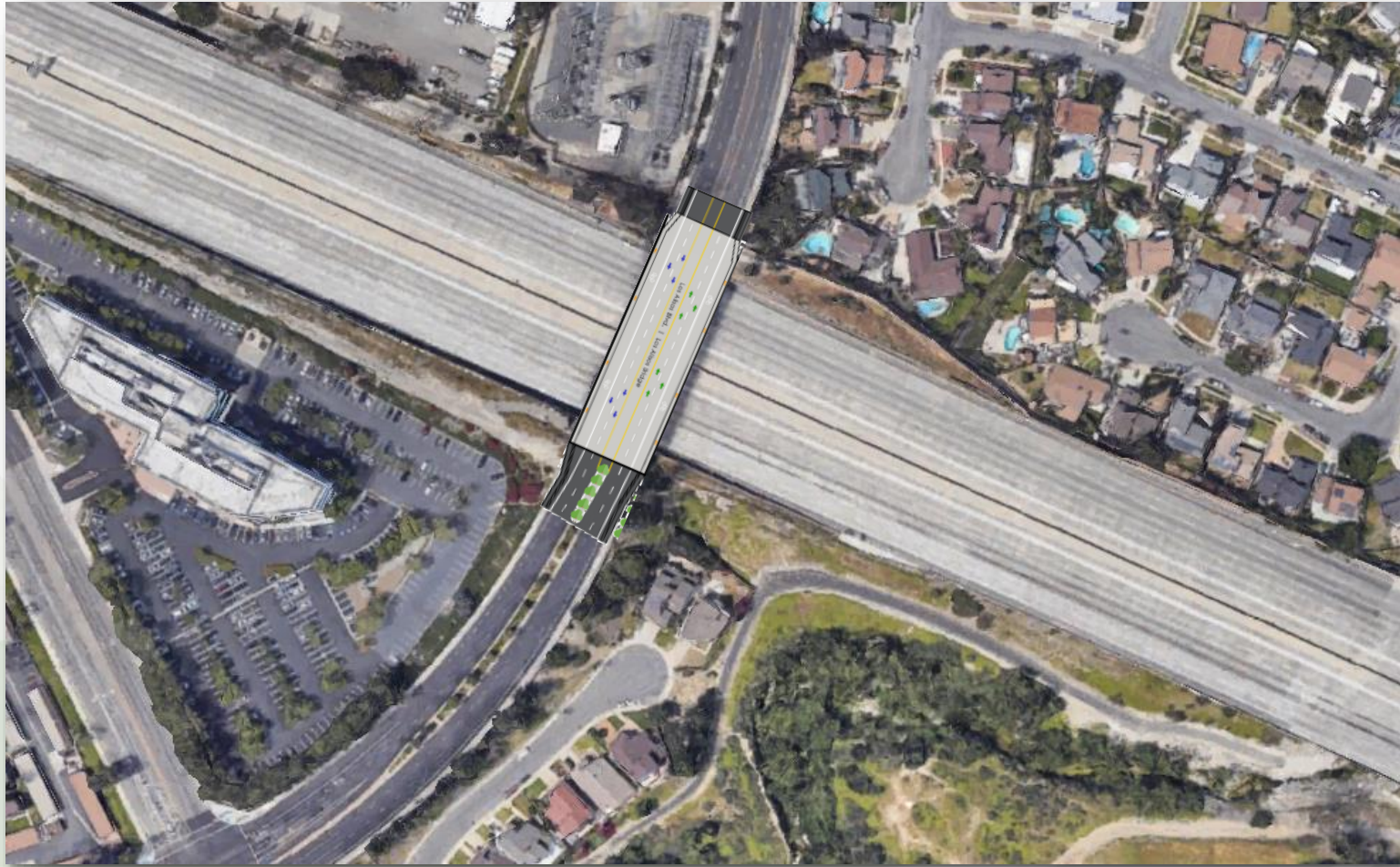
- Replace Interstate 5 bridge
- Ten lanes on Avery Parkway
- Three WB and three EB thru lanes
- Two WB and two EB left-turn lanes
- Eight-foot bike lanes in each direction
- Standard shoulders
- Sidewalks in each direction



# Segment 3 – Current Activities



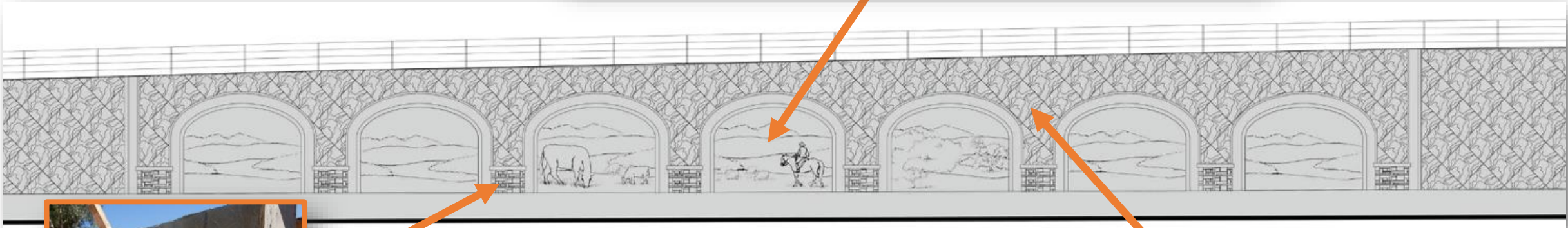
# Los Alisos Boulevard Overcrossing



- Two EB and WB lanes
- Bike lanes and wider sidewalks

# Retaining Wall Aesthetics

## Major Retaining Walls *Pastoral Ranch Theme*



*Stacked Stone Texture*



*Slate Stone Texture*

# Essential Coordination

## Segment 1

State Route 73 to Oso Parkway



## Segment 2

Oso Parkway to Alicia Parkway



## Segment 3

Alicia Parkway to El Toro Road



**METROLINK**



# Traffic Management Plan



55 mph zone  
K-rail  
CHP-enforced  
Closures



Off-peak  
Overnight  
2 lanes



Short-term  
28 hour  
55 hour



Caltrans  
Cities  
CHP

## CONSTRUCTION UPDATE

A PROJECT OF THE ORANGE COUNTY TRANSPORTATION AUTHORITY AND CALTRANS DISTRICT 12

WEEK OF JANUARY 25, 2021

### PILE DRIVING AT AVERY PARKWAY

Crews will be performing pile driving activities along the northbound I-5 bridge at Avery Parkway starting as early as Monday, Feb. 1. This work will take place for up to three weeks. Pile driving is necessary for the foundation of the new Avery bridge as part of the freeway widening.

Please be advised, this work may be loud. Schedules are subject to change due to unforeseen operational factors or inclement weather.

### WHAT IS PILE DRIVING?

Pile driving is a common method of constructing structure foundations. To

## I-5 FREEWAY WIDENING PROJECT

### Improvements Down the Road

I-5 South County Improvements Project will begin construction on Segment 3, from Alicia Pkwy. to El Toro Rd., on January 4, 2021. The total length of this segment is 1.8 miles and will allow for:

- Widening of the freeway in both northbound and southbound
- Extend the second carpool lane
- Reconstruct the Los Alisos Blvd. bridge
- Convert carpool lanes to continuous access
- Modify on- and off-ramps

Initial work activities will include the removal of trees and shrubs located along the I-5 within the Caltrans right of way. Please be advised this work may be loud. Crews will begin placing construction equipment, K-rail and signage in the area. Construction on all segments is expected to be completed in 2025.

949-614-0202 | octa.net/i5southcounty | @OCI5SouthCounty

### Avery Parkway Interchange Construction: Stage 1

- Estimated Start: Early 2021/1<sup>st</sup> Quarter
- Estimated Duration: Nine to 12 months

oci5southcounty  
Mission Viejo, California

19 likes

oci5southcounty Nighttime demolition along the northbound I-5 bridge at Avery Pkwy. has been completed. Access on Avery Pkwy. under the... more

December 18, 2020

# Public Outreach Contacts



**Fernando Chavarria**  
(714) 560-5306  
fchavarria@octa.net



**Logan Selleck**  
(714) 560-5573  
lselleck@octa.net



octa.net/I5SouthCounty



@I5SouthCounty@octa.net



@OCI5SouthCounty



**Project Help Line**  
(949) 614-0202



Facebook.com/OCI5SouthCounty