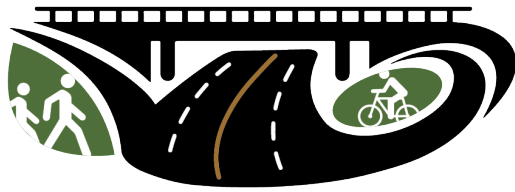


I-605  | Katella  
INTERCHANGE



*Safer. Smarter. Smoother.*

# I-605/Katella Avenue Interchange Project



# Project Overview

- Measure M2 – Project M
- Project included in Next 10 Delivery Plan; advanced by ten years
  - Environmental phase completed October 2018
  - Design phase completed September 2024
- Construction began in June 2025 and is expected to be completed in late 2026
- Project cost \$32 million



# Project Overview

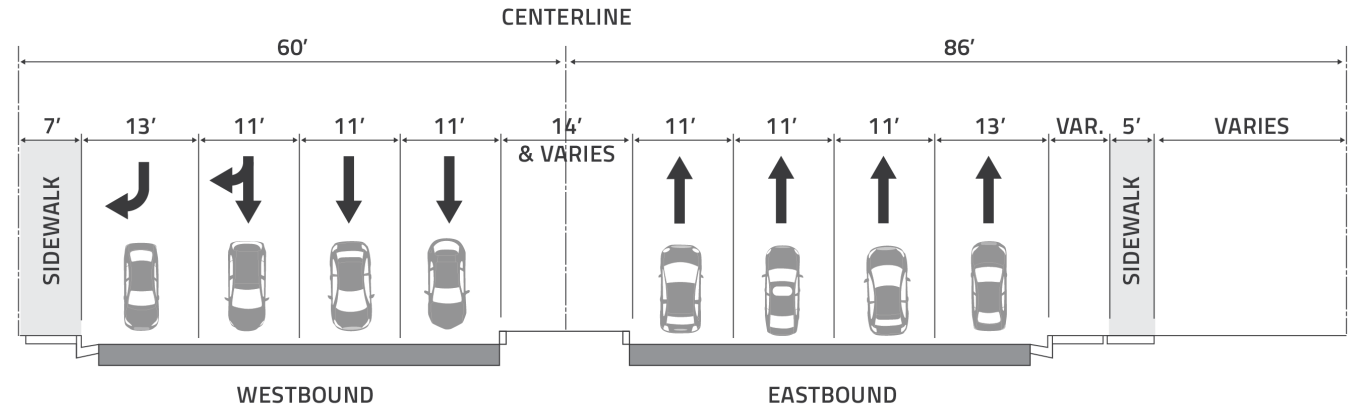
- Modifies northbound and southbound ramps at Katella Avenue
- Improves operations for all modes (vehicle, bicycle and pedestrians)
- Closes the gaps in existing bicycle lanes
- Enhances sidewalk connectivity through the interchange



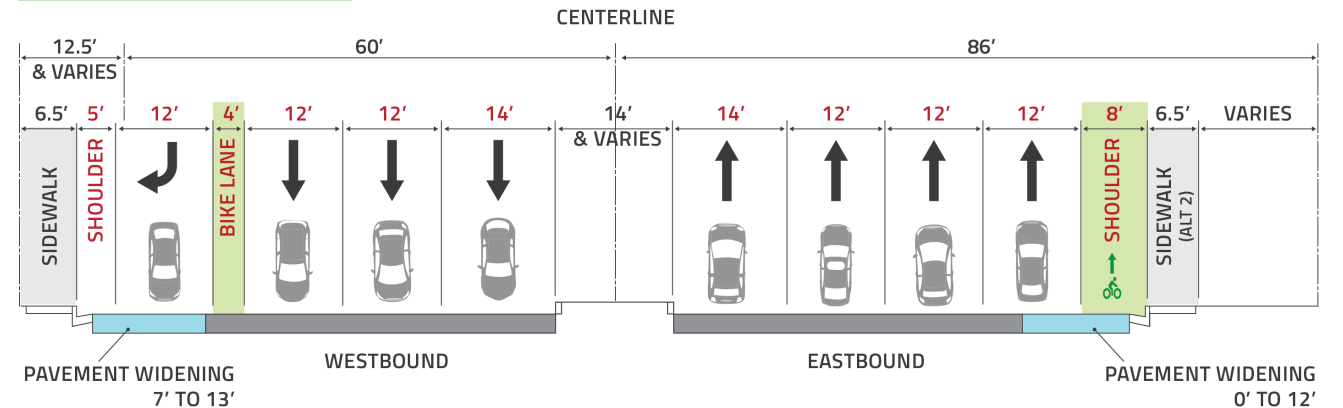
# Project Improvements

- Modify on- and off-ramps
- Construct retaining walls
- Add Class II bike lanes on Katella Avenue
- Reconstruct sidewalk
- Install new traffic signals
- Relocate utilities

**KATELLA AVENUE**  
Existing Conditions



**KATELLA AVENUE**  
Improvements



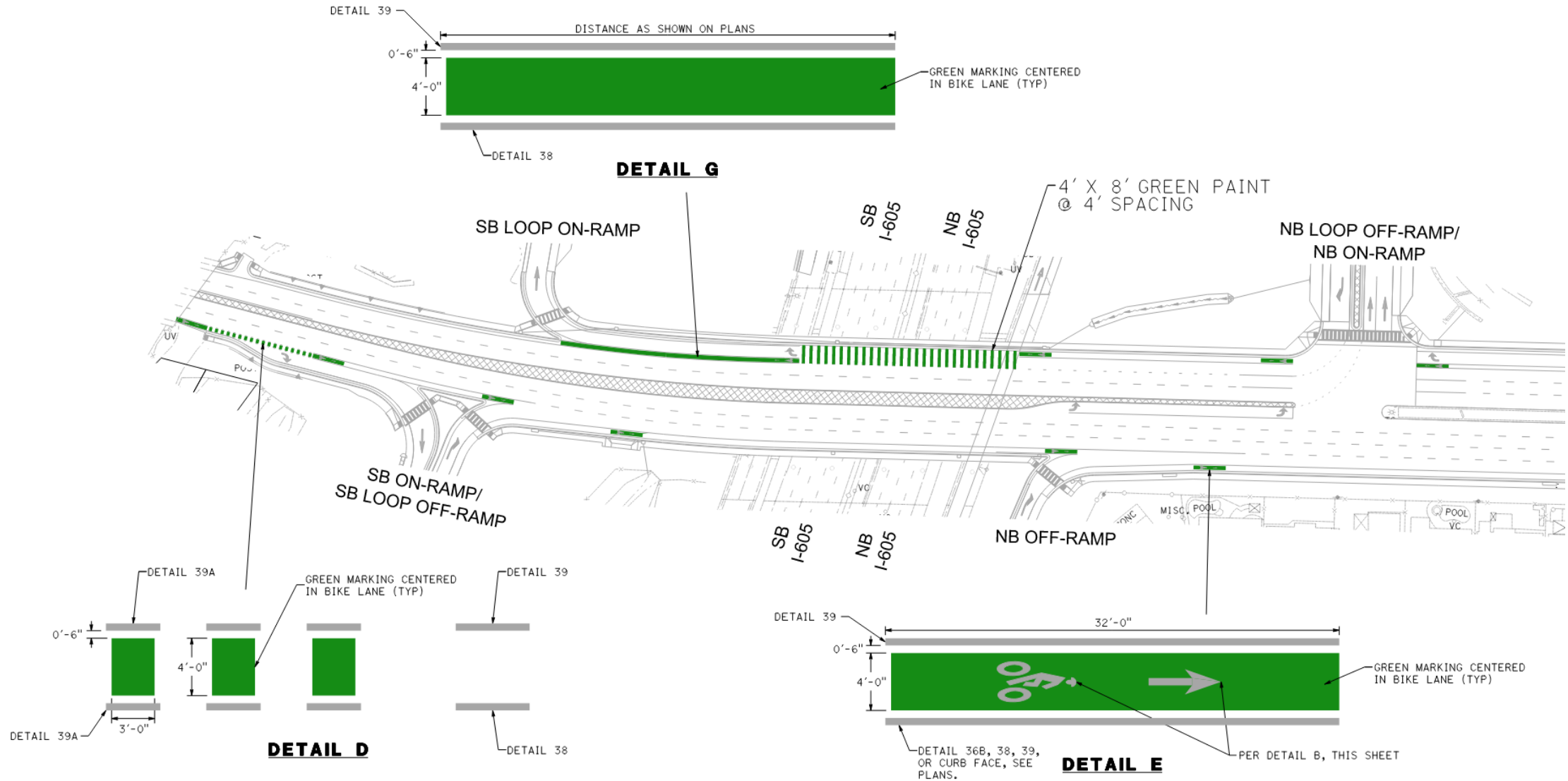


# Project Improvements

- Class II bicycle lane facilities through the interchange
- Conforms to Los Alamitos 2021 Active Transportation Plan
- New connections between on-street bike lanes and regional bike trails

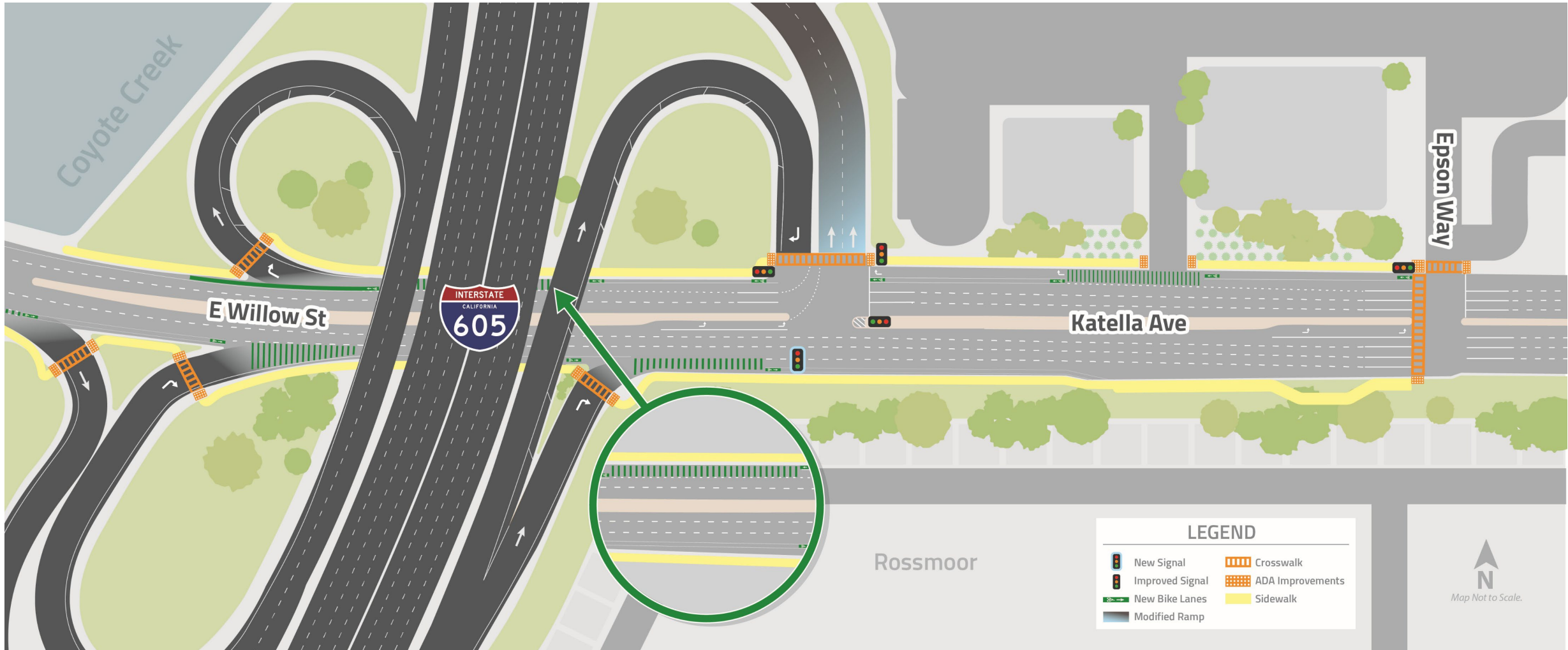


# Project Improvements





# Project Improvements





# Project Improvements



Jul 8, 2025 1:48:14 AM  
33.8034N 118.0810W  
4° N



# Project Improvements





# Construction Impacts

- Full and extended ramp closures
  - NB off-ramp to Katella
  - SB on-ramp from Willow Street
  - SB loop on-ramp from Katella
- Lane reductions
- Pedestrian and bike detour
- Noise and vibration
- Lighting for nighttime activities







# Stay Connected

- Webpage: [octa.net/605Katella](http://octa.net/605Katella)
- Email: [605KatellaInfo@octa.net](mailto:605KatellaInfo@octa.net)
- Hotline: 888-200-3302
- Social media: @605Katella
- Text 605Katella to 888-720-7016

