



OC Bus Update

Accessible Transit Advisory Committee

April 25, 2023

Ridership

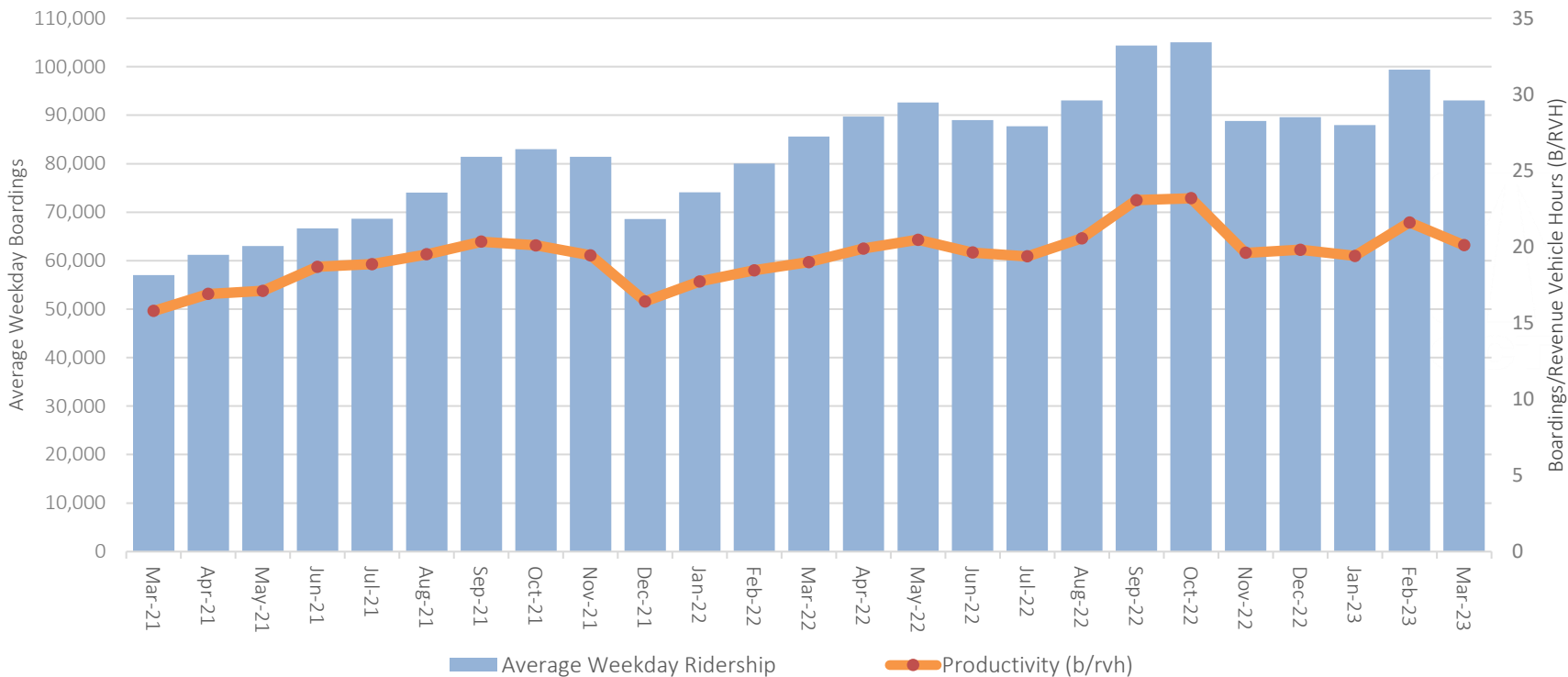
- Average weekday boardings and productivity as measured by boardings per revenue vehicle hour (B/RVH)

On-Time Performance

- Measuring service quality

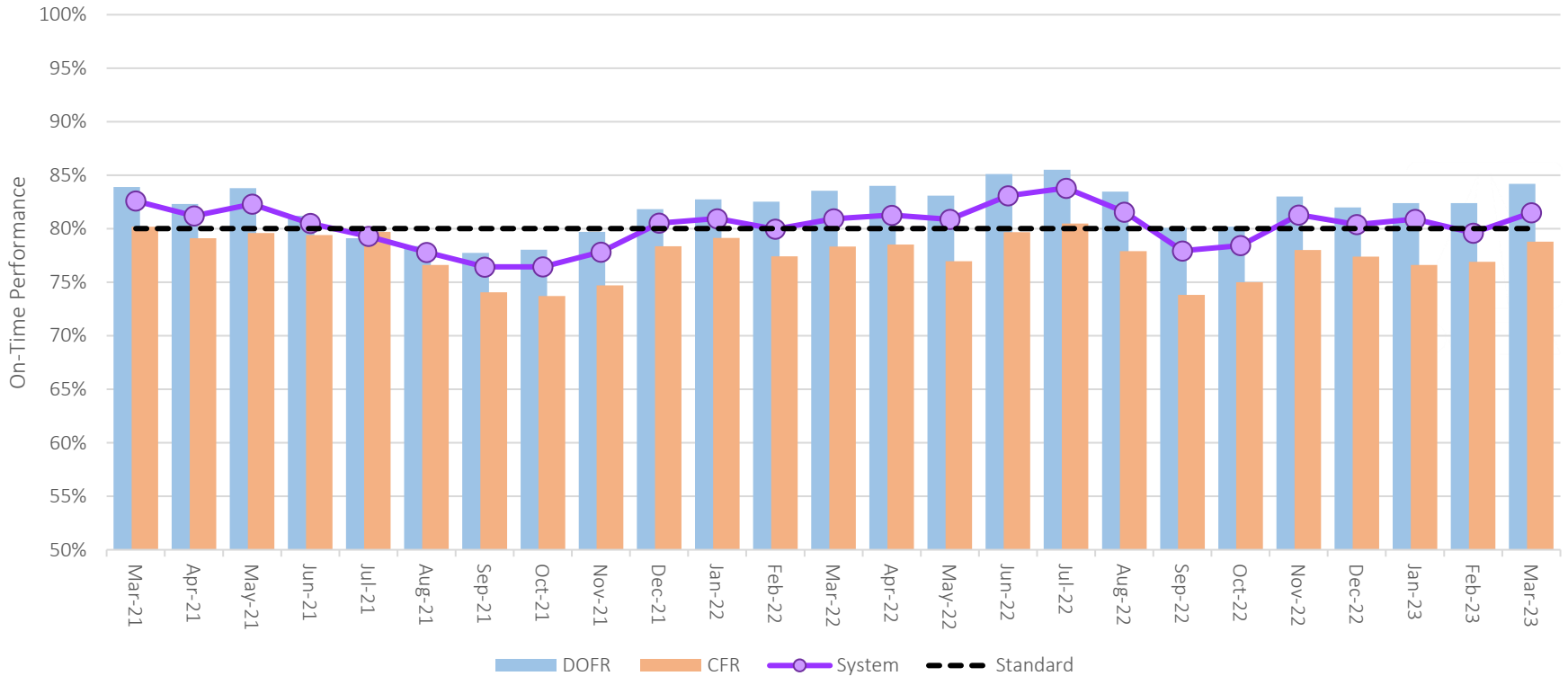
OC BUS RIDERSHIP AND PRODUCTIVITY

(AVERAGE WEEKDAY – LAST 2 YEARS)



OC BUS ON-TIME PERFORMANCE

(AVERAGE WEEKDAY)





NEXT STEPS

Continue to Track Service Performance

- Ridership trends
- On-time performance