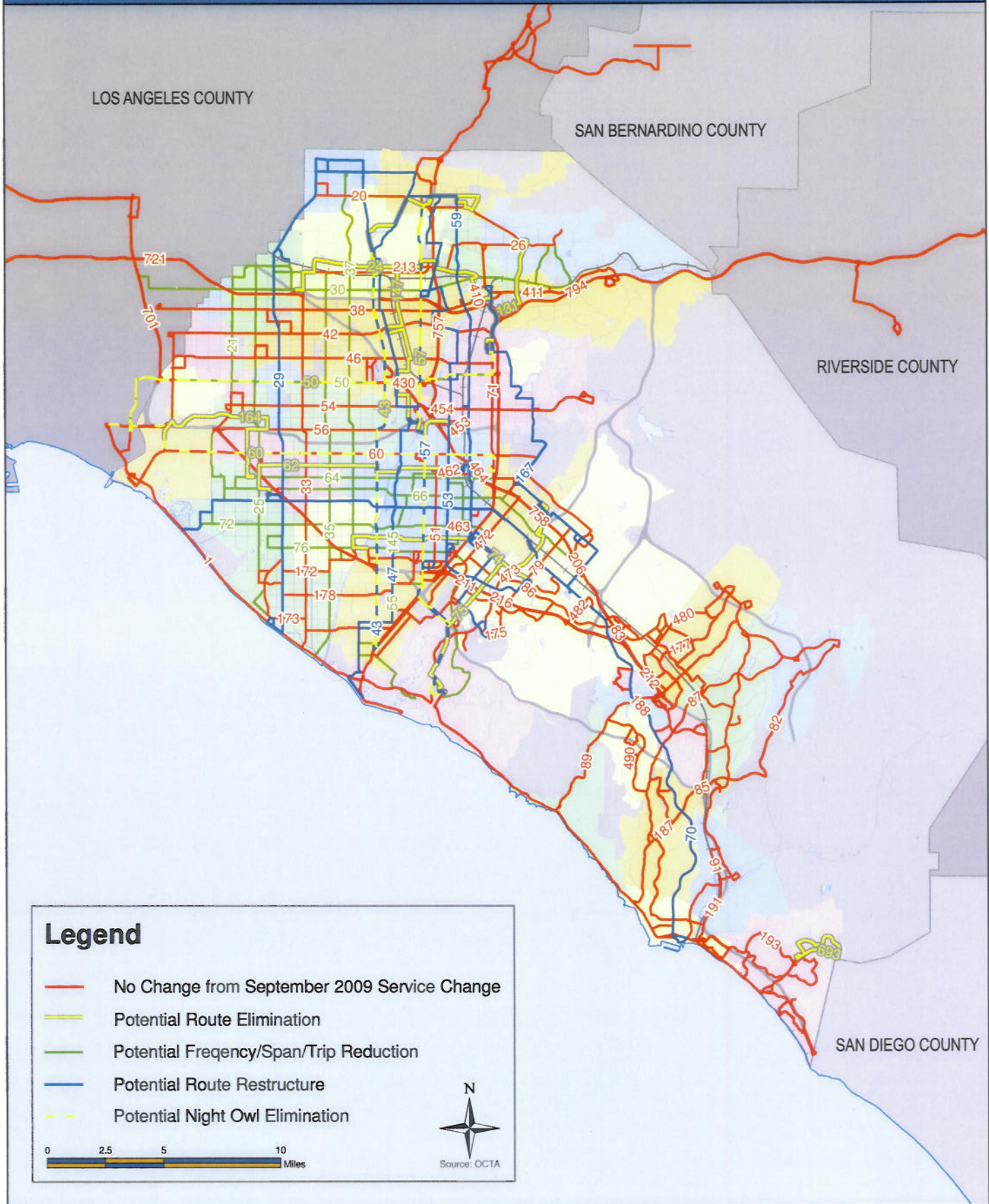
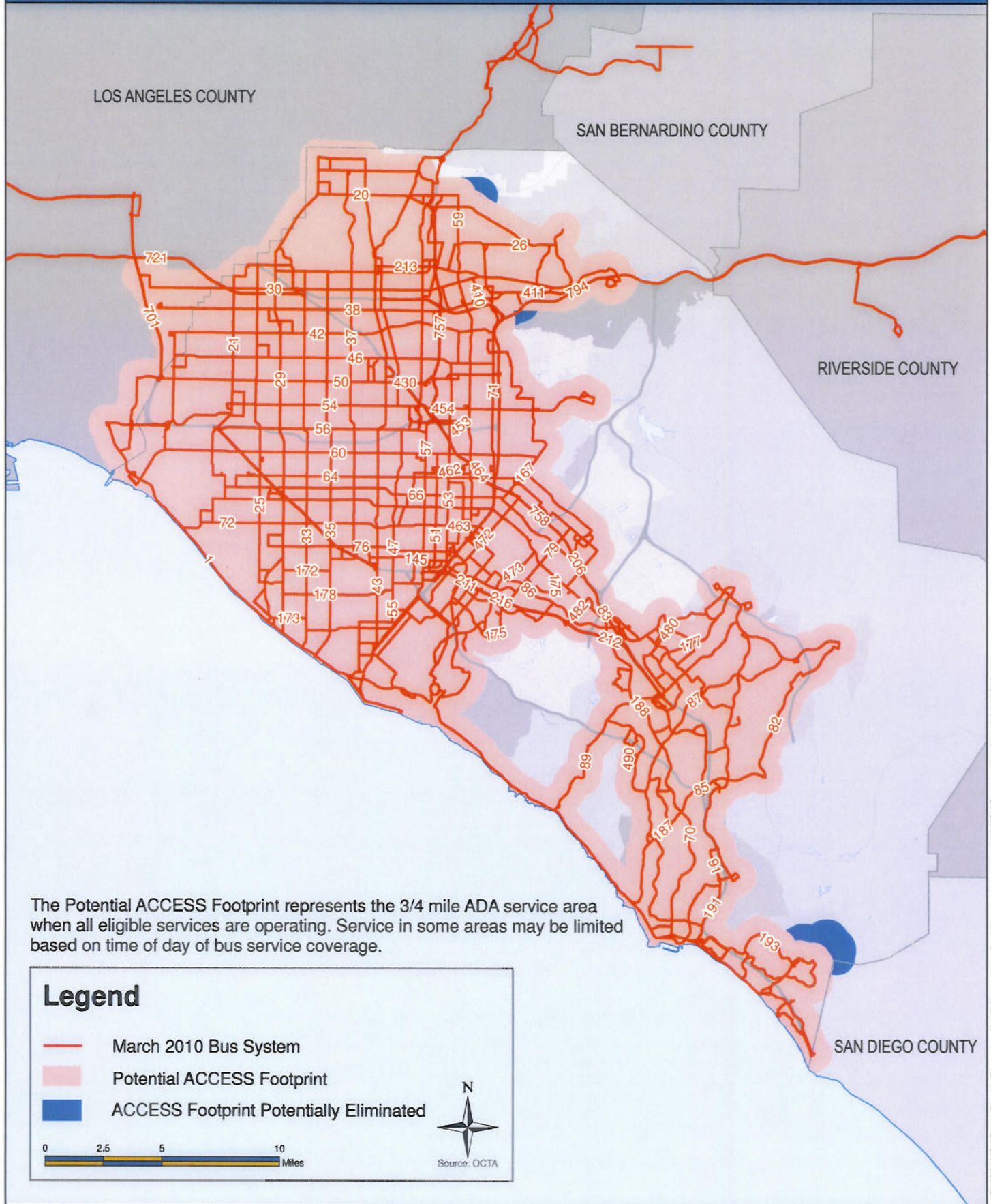


Recommended Strategy for 150,000 Annual Revenue Vehicle Hour Reductions Weekday Network



Potential Bus System With 150,000 Annual Revenue Vehicle Hour Reductions Weekday Network



Recommended Strategy for 150,000 Annual Revenue Vehicle Hour Reductions

Saturday Network



LOS ANGELES COUNTY

SAN BERNARDINO COUNTY

RIVERSIDE COUNTY

SAN DIEGO COUNTY

Legend

- No Change from September 2009 Service Change
- Potential Route Elimination
- Potential Frequency/Span/Trip Reduction
- Potential Route Restructure
- Potential Night Owl Elimination

0 2.5 5 10 Miles



Potential Bus System With 150,000 Annual Revenue Vehicle Hour Reductions

Saturday Network



LOS ANGELES COUNTY

SAN BERNARDINO COUNTY

RIVERSIDE COUNTY

SAN DIEGO COUNTY

The Potential ACCESS Footprint represents the 3/4 mile ADA service area when all eligible services are operating. Service in some areas may be limited based on time of day of bus service coverage.

Legend

- March 2010 Bus System
- Potential ACCESS Footprint
- ACCESS Footprint Potentially Eliminated

0 2.5 5 10
Miles



Source: OCTA

Recommended Strategy for 150,000 Annual Revenue Vehicle Hour Reductions

Sunday Network



LOS ANGELES COUNTY

SAN BERNARDINO COUNTY

RIVERSIDE COUNTY

SAN DIEGO COUNTY

Legend

- No Change from September 2009 Service Change
- Potential Route Elimination
- Potential Frequency/Span/Trip Reduction
- Potential Route Restructure
- - - Potential Night Owl Elimination

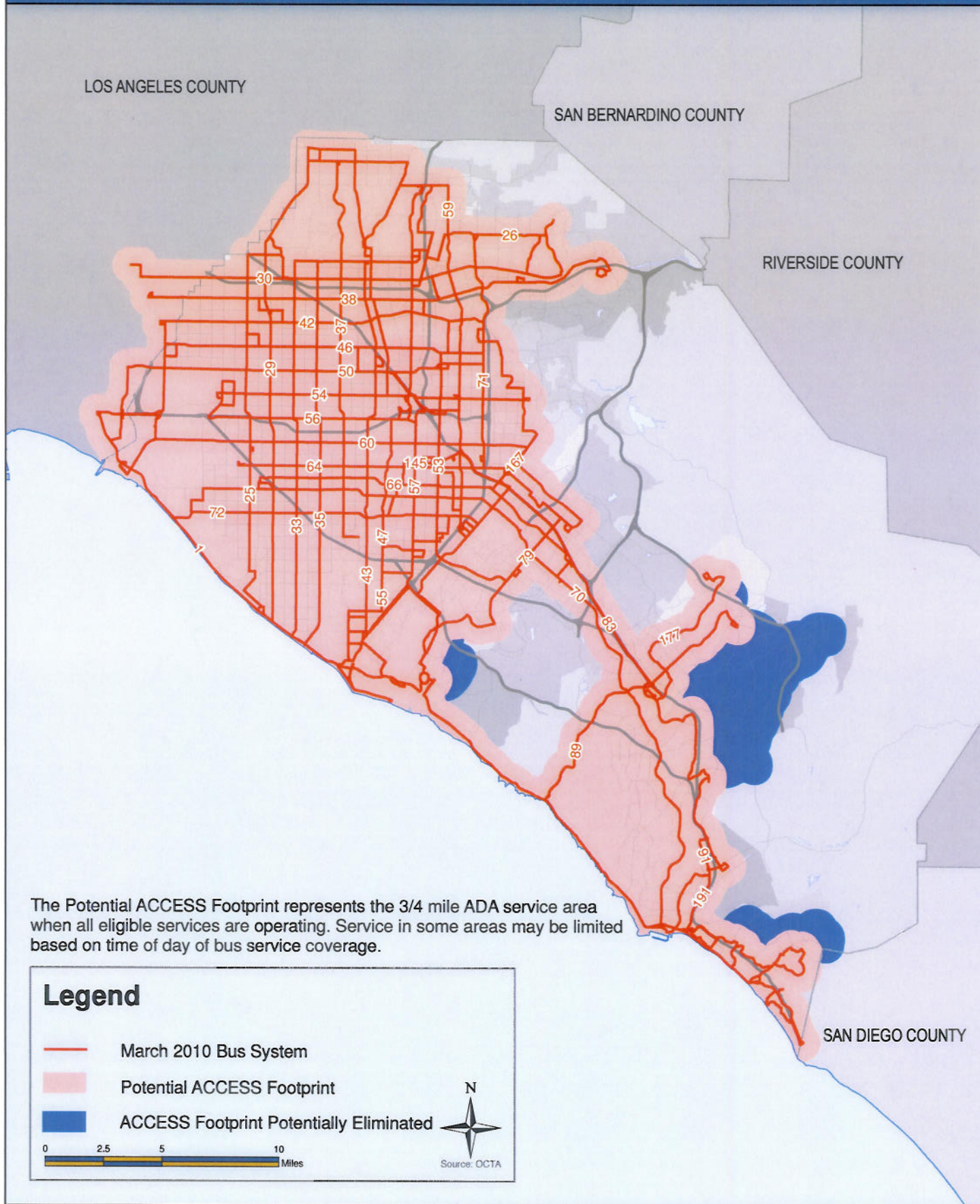
0 2.5 5 10 Miles



Source: OCTA

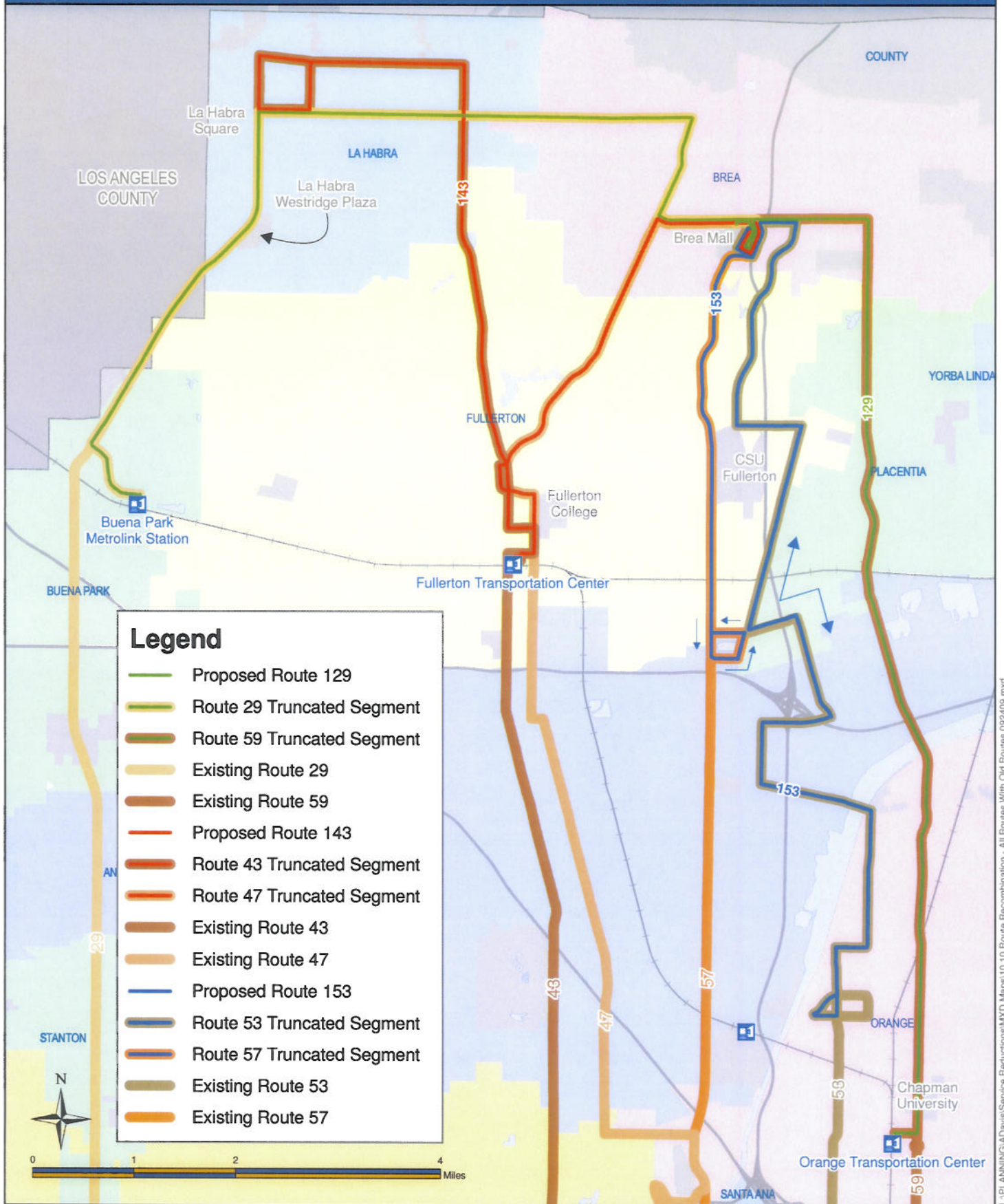
Potential Bus System With 150,000 Annual Revenue Vehicle Hour Reductions

Sunday Network



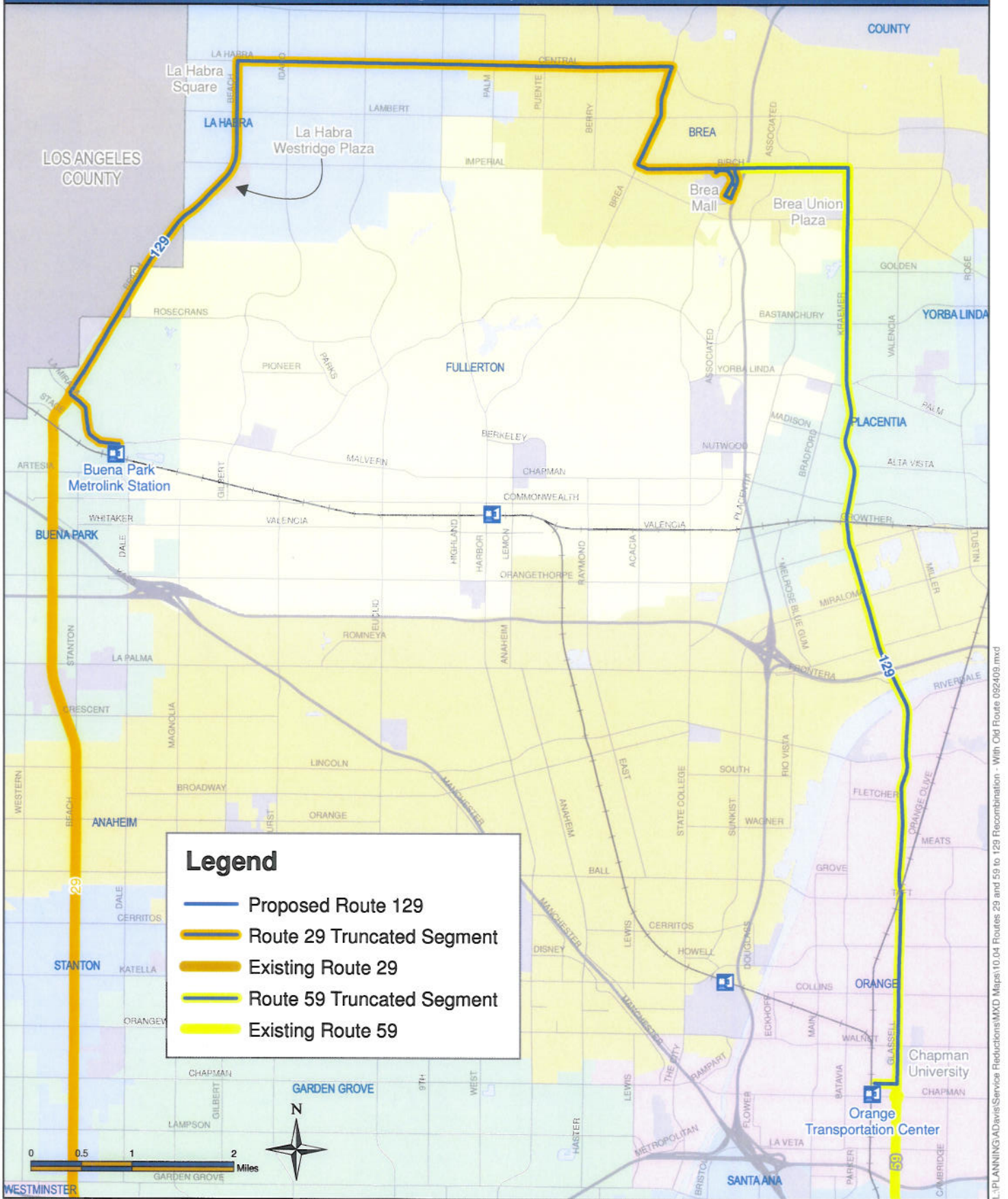
North County Restructuring

Proposed Routes 129, 143, and 153



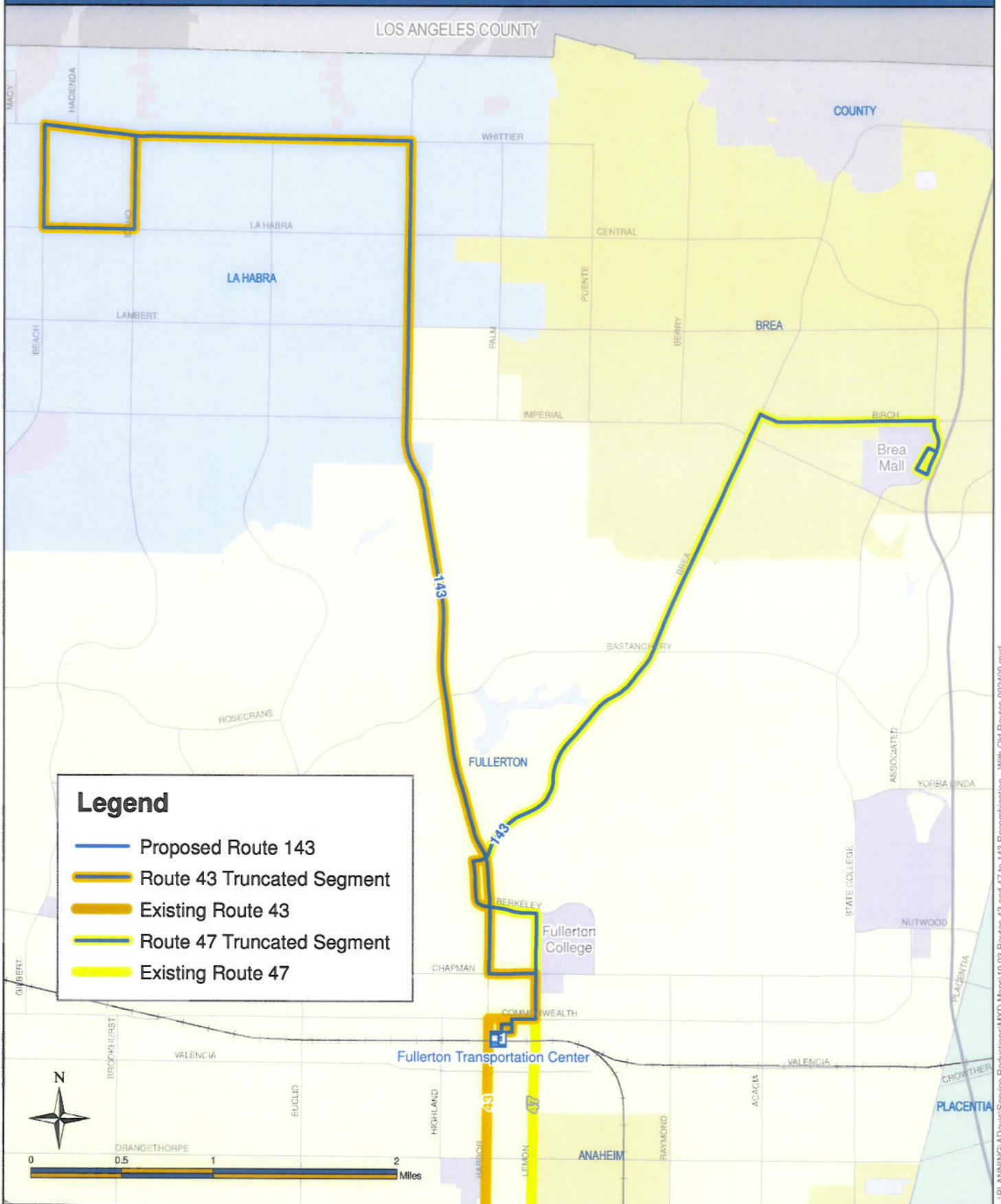
Proposed Route 129

Buena Park Metrolink Station to Orange Transportation Center



Proposed Route 143

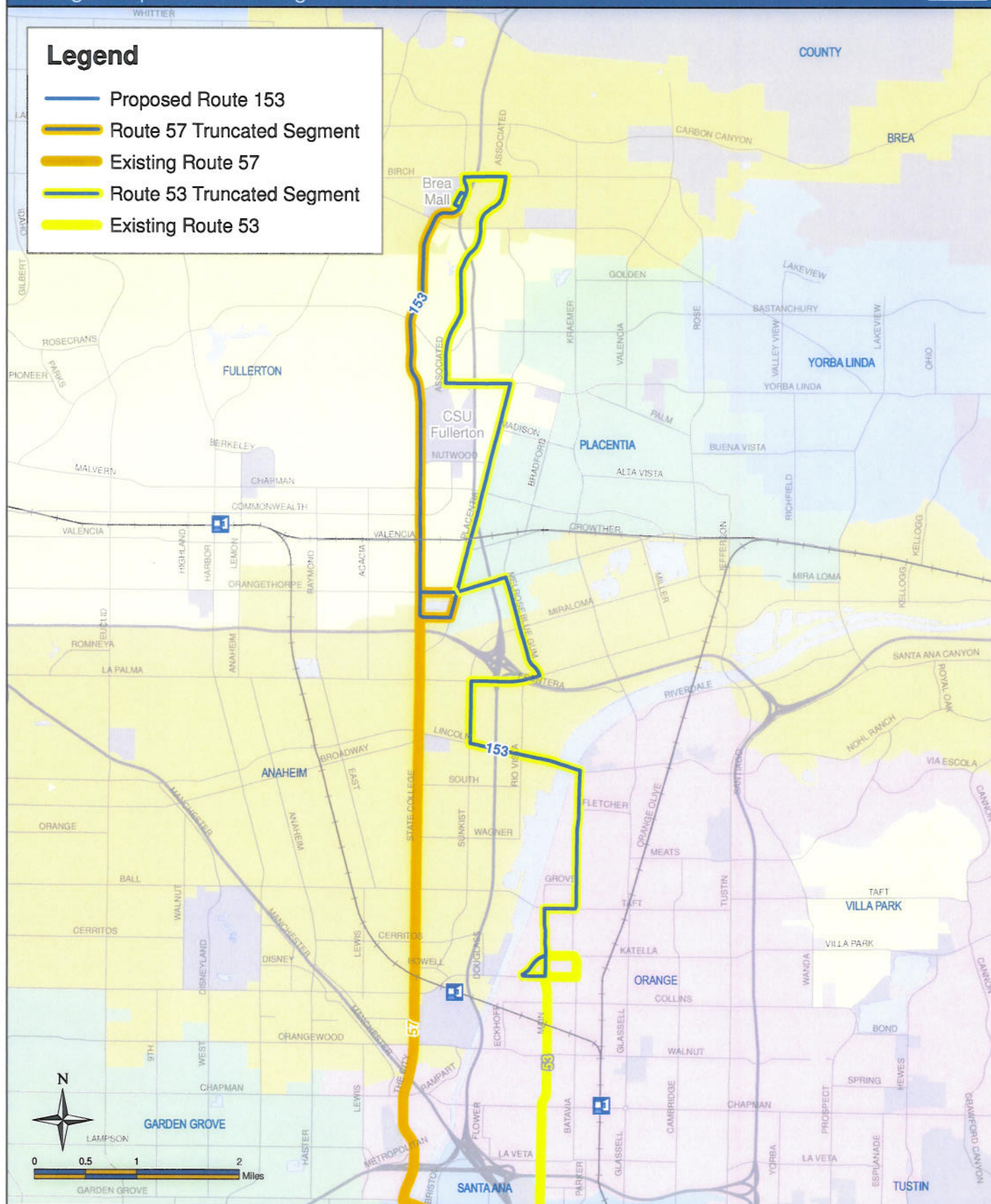
La Habra to Brea Mall



Orangethorpe-State College to Main-Katella

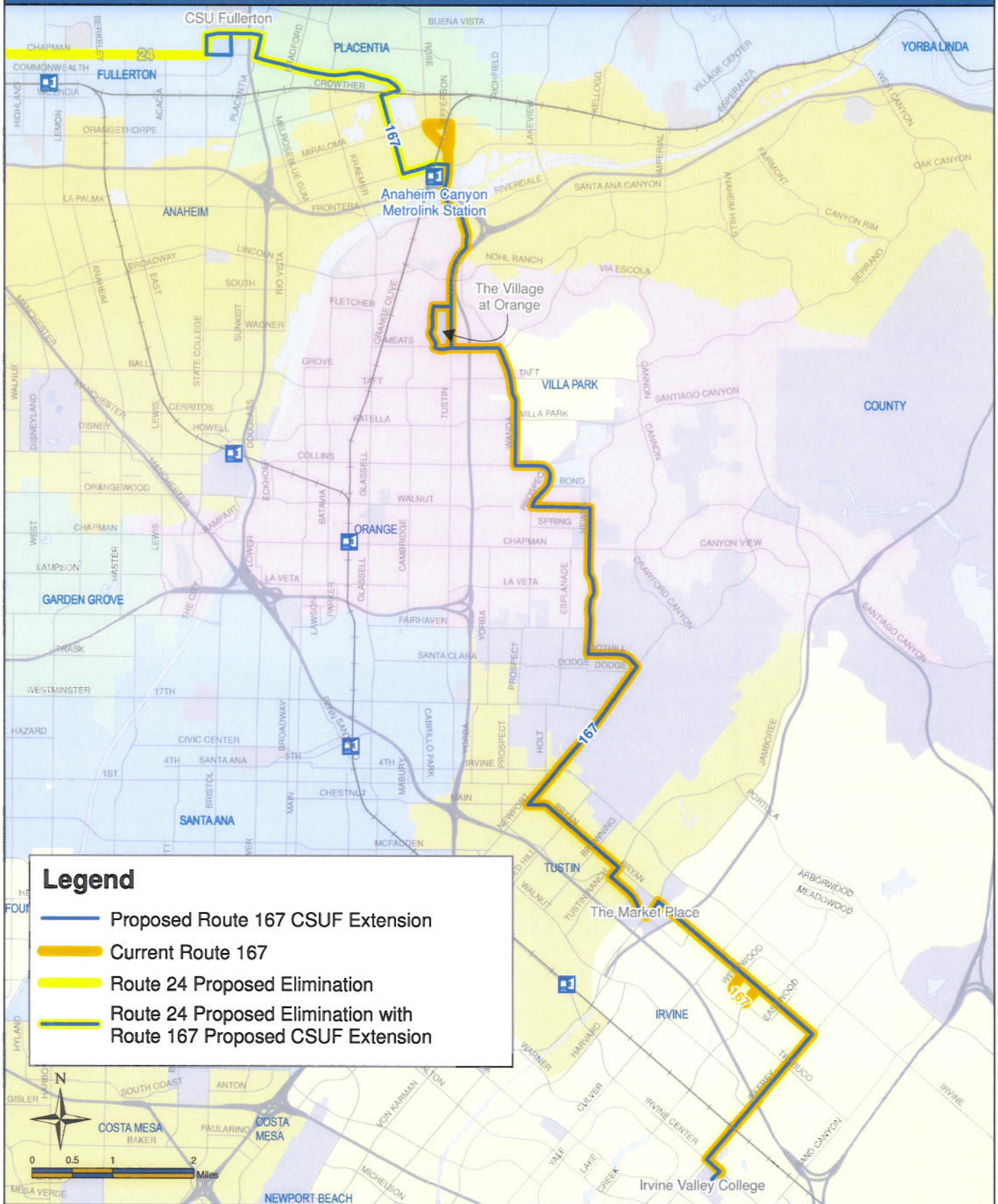


- Proposed Route 153
-  Route 57 Truncated Segment
- Existing Route 57
-  Route 53 Truncated Segment
-  Existing Route 53



Proposed Route 167

CSU Fullerton to Irvine



Tustin Metrolink Station to Dana Point

