

# Keeping Orange County Moving



## Capital Projects Outreach Update

September 8, 2014



# Capital Projects



# Projects in Environmental Phase

I-5 (I-405 to SR-55)



TUSTIN



I-5 (SR-55 to SR-57)



# I-405 Improvement Project



- Final EIR/EIS
  - Respond to comments
- Speakers Bureau
- Business Profiles
- Soundwall Surveys and Meetings
- Traffic Management Coordination with Corridor Cities



# Design Phase - I-5 (SR-73 to El Toro Rd)

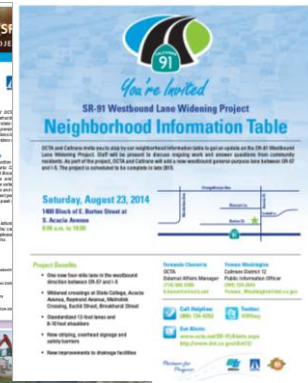


<b>Development Phase</b>	<b>Estimated Dates</b>	<b>Outreach Purpose</b>
<b>Final Design and Pre-Construction</b>	<b>Late 2014 - Mid 2017</b>	<b>Coordinate with local cities Engage/Inform stakeholders Traffic Management Plan</b>
<b>Construction</b>	<b>2018</b>	<b>Construction Outreach</b>



# Construction Outreach

(connecting with crews, communities and businesses)



### Acacia Overpass



- Demolished edge of bridge
- Demolished soundwall
- Demolished concrete barrier
- Drilled for installation of columns
- Next Steps:
  - Excavating
  - Grading
  - Drilling Piles
- Est. completion: Mid 2015



# OC Bridges

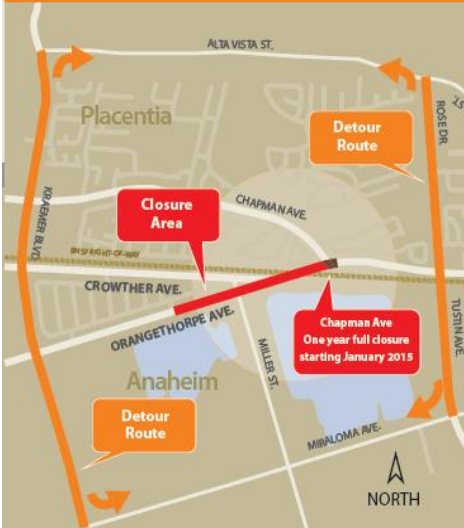


## ORANGETHORPE RESTAGING

OCTA previously planned for the bridge to be built while Orangethorpe remained open via a bypass road with one lane in both directions. However, complex utility relocations have affected the construction schedule. In order for the project to remain on schedule for completion by mid-2016, Orangethorpe will be fully closed while the bridge is under construction. Starting in January 2015, access to Chapman Ave will be closed for approximately one year.

## DETOUR ROUTE

Drivers can use either Kraemer Boulevard to the west or Tustin Avenue/Rose Drive to the east, with Alta Vista to the north and Miraloma to the south, as detour routes. Please see detour map.



# I-5 South (Pico to San Juan Creek)



---

## San Juan Creek Road to PCH

March 2014 to 2016

---

## PCH to Vista Hermosa

Sept. 2014 to 2016

---

## Vista Hermosa to Avenida Pico

Early-2015 to 2017





# Ortega Hwy – Upcoming Closures



# New Procurements

## 2014

- I-5 (SR-73 to El Toro) Design and Pre-Construction
- SR-91 (SR-57 to SR-55) Environmental Phase
- I-405 (I-5 to SR-55) Environmental Phase

## 2015

- I-5 Central (SR-55 to SR-57) Design and Construction



# Connect With Our Outreach Team

