

OCTA Strategic Plan Revision 1,
2014-2019

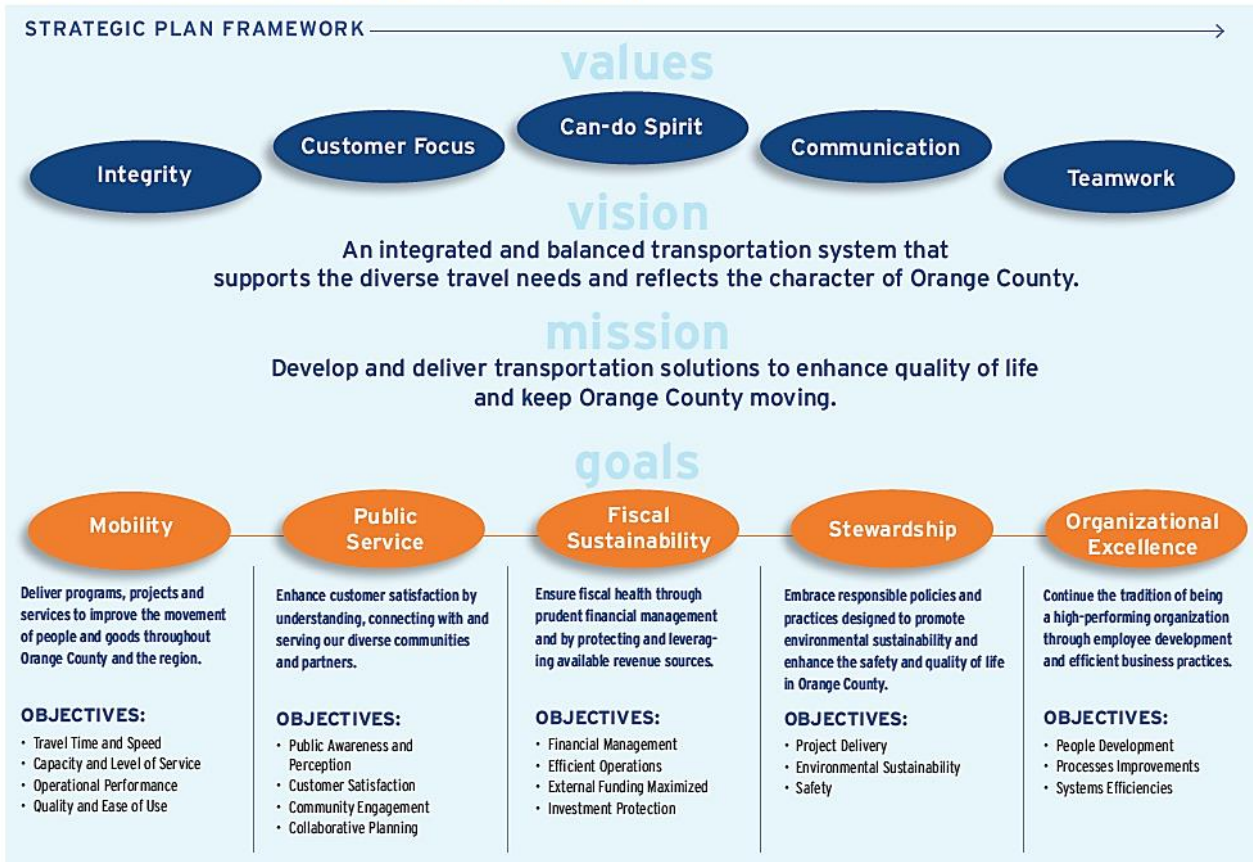


OCTA Strategic Planning Introduction



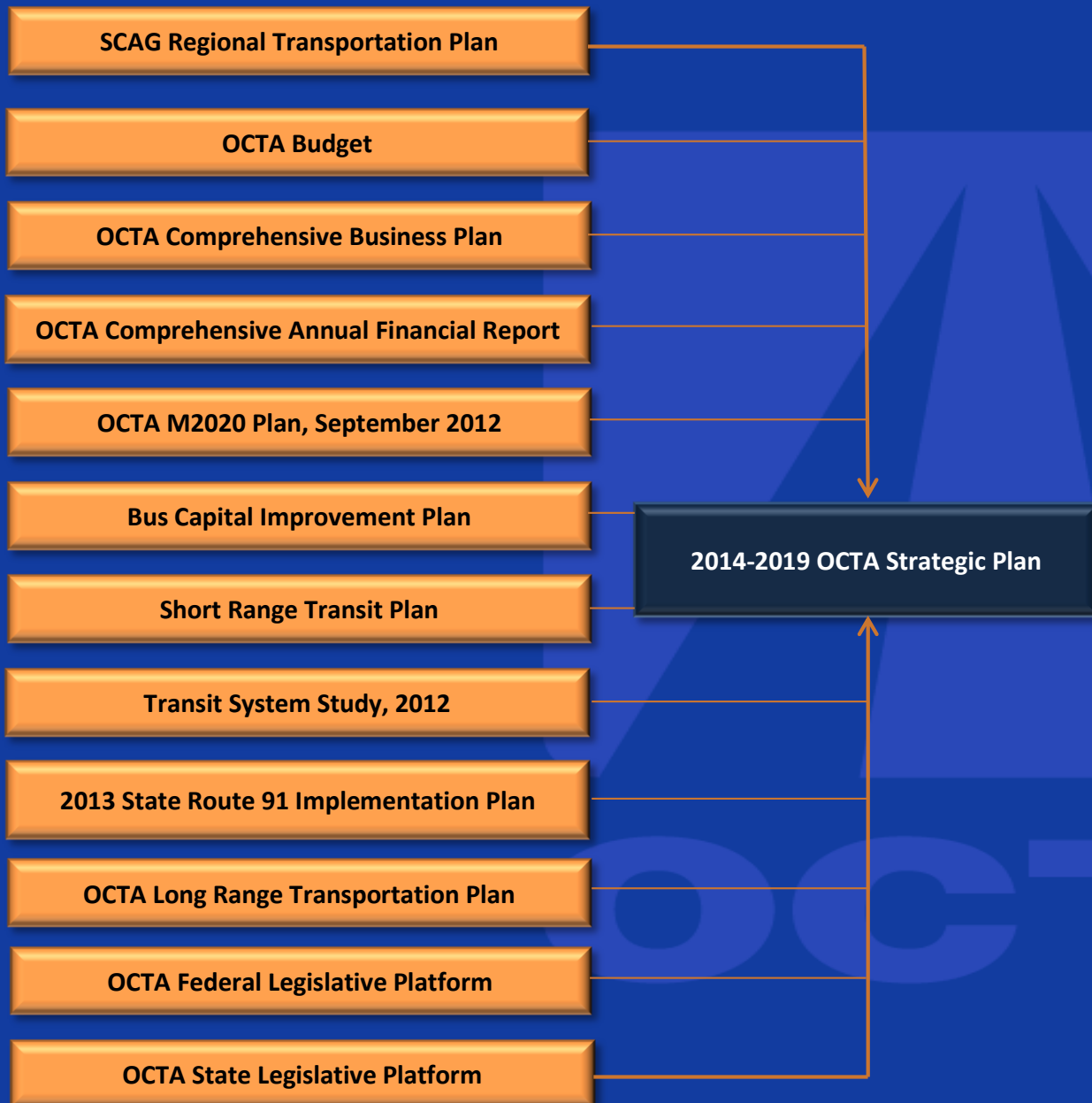
- Adopted by the OCTA Board of Directors in February 2011.
- First OCTA Strategic Plan.
- To be revised on a biennial timeframe

Strategic Plan Background



- The first Strategic Plan (Version 1.0) created public value through defining OCTA:
 - Values, Vision, Mission, Goals, and Objectives.
 - Guided the development and implementation of the Board Chair's annual goals and the annual CEO Action Plan.
- Set up a performance-based plan, aiming for an enhanced focus on performance and accountability

Strategic Plan: Version 2.0



■ Revision Approach:

- Build on version 1.0 foundation by integrating a compendium of OCTA, regional, and state plans to create a balanced transportation program.
- First integration of all plans, programs and mandates to create consistency, guidance and ease of use.
- By taking this approach, the updated Strategic Plan serves as the guiding document supported by local and regional plans, programs and projects.

Example from Draft 2014 – 2019 OCTA Strategic Plan

IV. Streets and Roads

Purpose: Local streets provide the capacity for the movement of people and goods which is essential to Orange County's commerce and vitality. Orange County "streets carry approximately half of Orange County's car and truck traffic and nearly all of Orange County's bicycle and pedestrian traffic."¹⁹

Goal: Invest nearly \$1.2 billion of funding for street and road improvement projects to expand roadway capacity and protect pavement conditions. (Measure M Projects O and Q).

A. Regional Capacity Program (Measure M Project O) Overview

Purpose: The Regional Capacity Program, Project O provides for the following activities:

- Funded in combination with M2 and local matching funds.
- Funds roadway improvements as defined through the Master Plan of Arterial Highways (MPAH).
- Includes considerations for bicycle and pedestrian components as part of each project.
- Provides for intersection improvements and other projects to help improve street operations and reduce congestion.
- Provides funding for completion of seven grade separations that will eliminate car and train conflicts along the Burlington Northern Santa Fe Railway in northern Orange County.

1. OC Bridges, Seven Grade Separation Projects

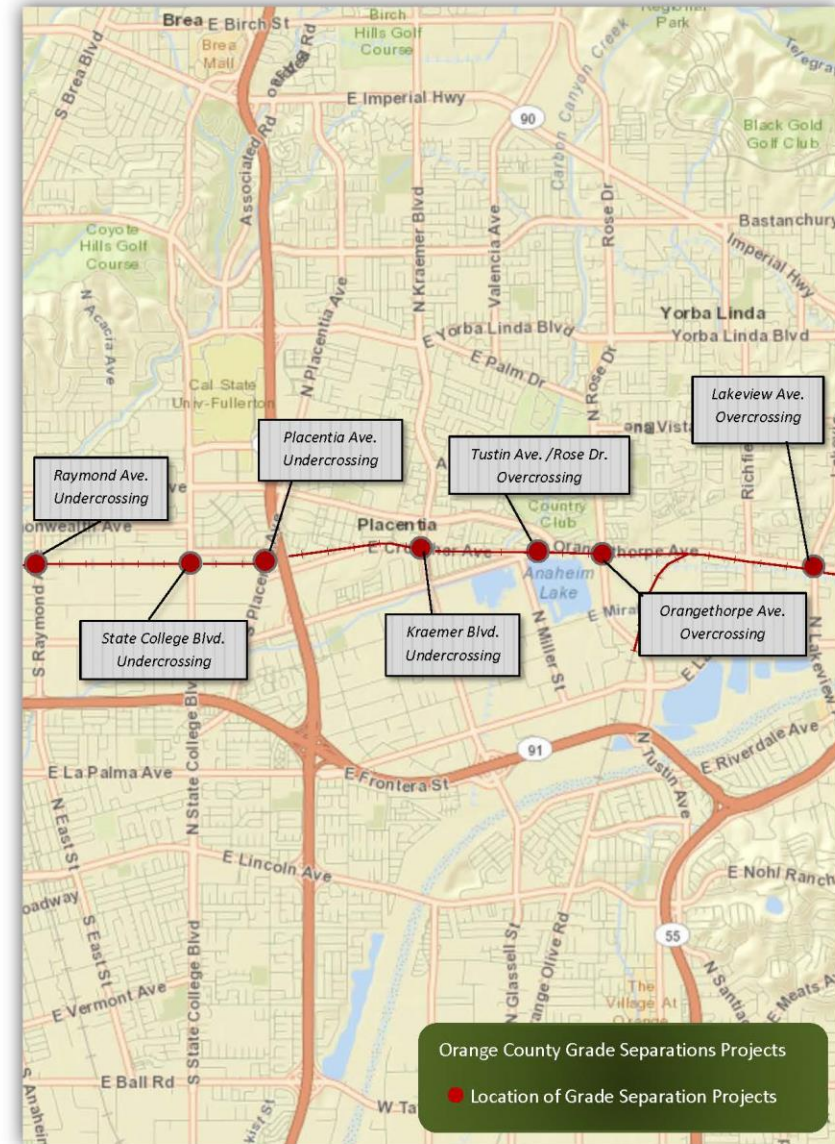
Purpose: The OCTA Grade Separation Projects, also known as the OC Bridges projects provides funding for completion of seven grade separations that will eliminate car and train conflicts along the BNSF railway in northern Orange County. These bridges will eliminate the need for commuters and commercial vehicles to stop, and wait at railroad crossings. Approximately 70 BNSF trains use the Orangethorpe Corridor in the cities of Anaheim, Fullerton, and Placentia daily, causing delays and safety hazards, restricting emergency response, and business access. By 2030, an estimated 130 trains per day are anticipated.²⁰

The following map provides the location of the seven grade separation projects. Details of each grade separation project are also provided in this section.

¹⁹ 2012 M2020 Plan, pg. 52

²⁰ <http://www.octa.net/Freeways-and-Streets/Streets/OC-Bridges/Project-Overview/>

Example from Draft 2014 – 2019 OCTA Strategic Plan

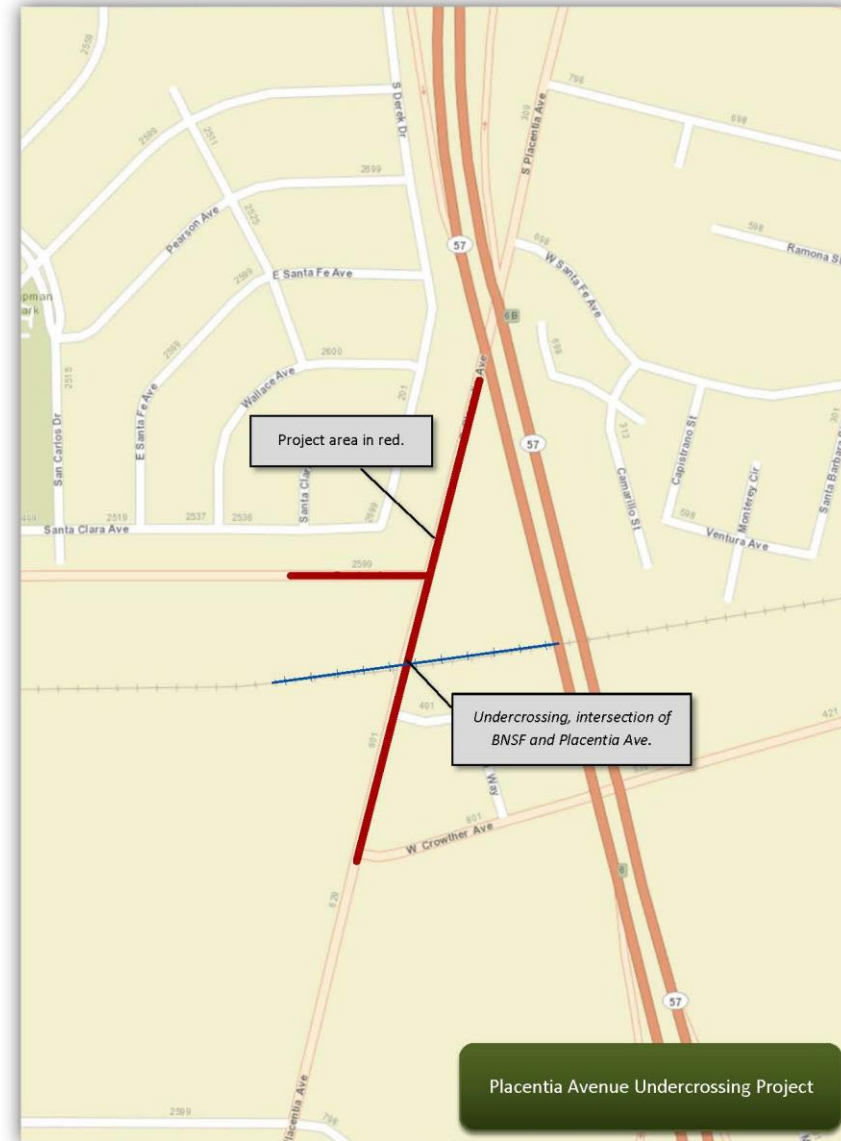


Example from Draft 2014 – 2019 OCTA Strategic Plan

b) Placentia Undercrossing Project

Placentia Avenue Undercrossing Project	
Description	The Placentia Avenue undercrossing will be constructed approximately between 85 feet south of Crowther Avenue and 670 feet north of Fender Avenue, in the cities of Placentia and Fullerton. A railroad bridge to accommodate two existing BNSF tracks and a future third track will be built, while Placentia Avenue will be depressed. Construction of bypass tracks or shoofly and a temporary four lane roadway to reroute traffic, are necessary to proceed with this project. Improvements to adjoining streets and commercial driveways will also be part of this project. Placentia Avenue is planned to remain open during construction and two lanes of traffic would be in operation in both directions during construction. Traffic will be diverted onto the temporary roadway to the east of the current route.
Project	Measure M, Project O
Benefit	<ul style="list-style-type: none"> • Greater driver/pedestrian safety • Shorter emergency response times • Elimination of delays • Easier business access
Cost	Total \$69.4 million
Funding Source	State and M2
Environmental Phase	Completed: Calendar year Q2, 2001
Engineering Phase	Completed: Calendar year Q2, 2010
Right-of-way	Completed: Calendar year Q1, 2011
Construction	Calendar year Q4, 2011 to Q3, 2014
Reference	https://octatoday.octa.net/capitalprograms/projcontrols/Documents/2013-11%20Status%20Report.pdf

Example from Draft 2014 – 2019 OCTA Strategic Plan



Example from Draft 2014 – 2019 OCTA Strategic Plan

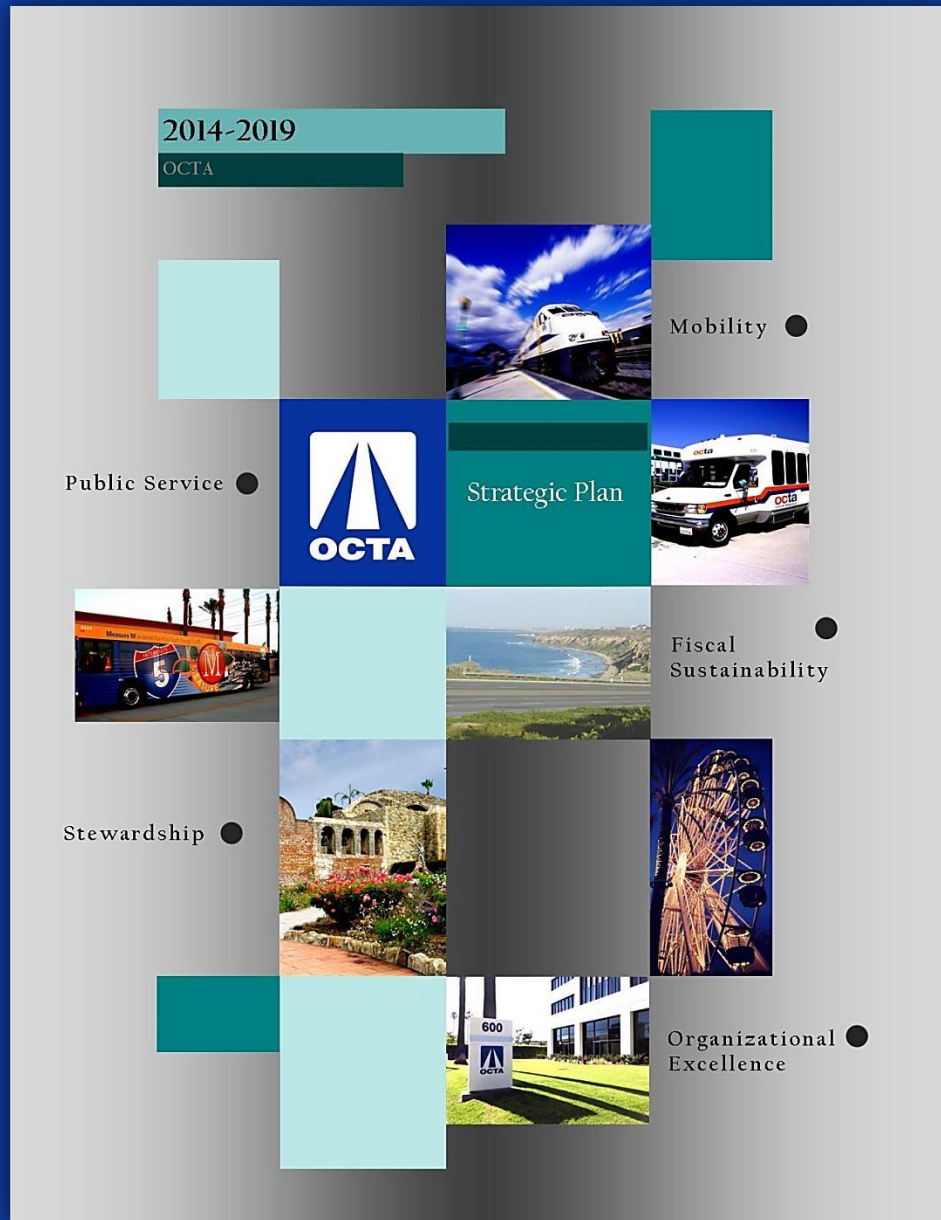
Goal Area Objectives	Programs Supporting Objectives	Projects Supporting Programs	Benefit	Service Level Improvement	Pg.#
	Freeway Construction Projects				
		I-5/SR-74 Ortega Highway, Interchange Improvements	Alleviates congestion north and south. Improves intersection interchange.	Reconstructs the I-5/SR-74 interchange to accommodate future traffic volumes.	
		SR-91 Widening, SR-55 to Tustin Ave.	Reduces operational problems on this section of WB SR-91, including weaving and merging maneuvers.	Adds 2 miles of WB auxiliary lane. Reconstruction of Santa Ana River Bridge. Reconstructs NB ramps at SR-91 and Lambert Rd.	
	Freeway Environmentally Cleared Projects				
		I-5 at El Toro road Interchange Improvements	Reduce chokepoints to accommodate forecasted traffic demands	Improves the El Toro Road Interchange by widening roads, modifying entrance and exit ramps, and modifying or replacing existing bridge structures.	
	OC Bridges, Grade Separation Projects				
		Raymond Avenue Undercrossing	<ul style="list-style-type: none"> * Greater driver/pedestrian safety * Shorter emergency response times * Elimination of delays * Easier business access 	* Eliminates car and train conflicts along the Burlington Northern Santa Fe Railway in northern Orange County. These bridges will eliminate the need for commuters and commercial vehicles to stop, and wait at railroad crossings. * Currently, 70 trains per day. By 2030, 130 trains per day are anticipated.	
		Placentia Undercrossing			
		Kramer Boulevard Undercrossing			
		Orangethorpe Avenue Overcrossing			
	Tustin Avenue/Rose Drive Overcrossing				
	Lakeview Avenue Overcrossing				
	State College Boulevard Undercrossing				

Grade Separation Projects

Example from Draft 2014 – 2019 OCTA Strategic Plan



Strategic Plan V2: Benefits



- The Strategic Plan V2 integrates and creates consistency with all of the plans OCTA develops or contributes to, **Version 2.0** benefits include:
 - Centralization of information, as it relates to projects, programs and budgets.
 - Delineates (5 years) programs and projects.
 - Enhances transparency and accountability.
 - Will be used to develop the Chair and CEO Initiatives, CEO Action Plan, and contribute to budget development.
 - Establish Performance Measures (Future Effort).



Schedule

- ✓ October 7, 2013: Briefed the Executive Committee
- ✓ April 7, 2014: Deliver Draft 2014-2019 Strategic Plan to Executive Committee
- ✓ April 28, 2014: 2014-2019 Strategic Plan deliver to Board for adoption.

Future Plans

- Develop and implement performance measures
- Create an online interactive Strategic Plan
 - See SCAG iRTP for example
 - Updated quarterly



REGIONAL TRANSPORTATION PLAN
2012-2035 RTP
SUSTAINABLE COMMUNITIES STRATEGY
Towards a Sustainable Future



Note: While the content of this iRTP is the same as the published 2012-2035 RTP/SCS, which was adopted by SCAG's Regional Council on April 4, 2012, formatting differences may occur between the two versions due to technical limitations in converting the published document into the format used in the iRTP.

HOME

CONTENT

MEDIA GALLERY

DOWNLOAD/PRINT

Media Gallery



EXECUTIVE
SUMMARY



01

VISION



02

TRANSPORTATION
INVESTMENTS



03

FINANCIAL PLAN