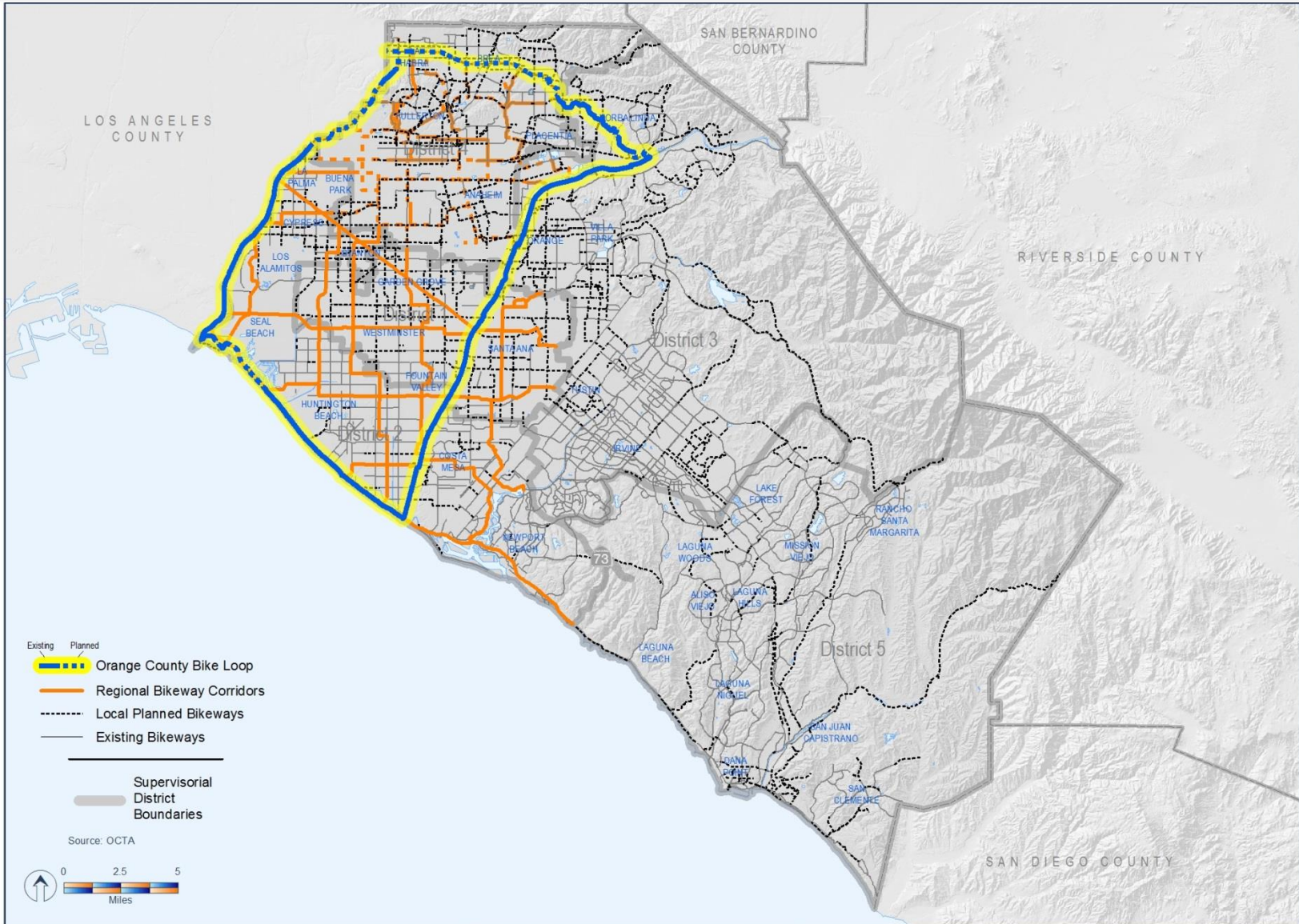


Regional Bikeways Planning Update

Progress Made to Date

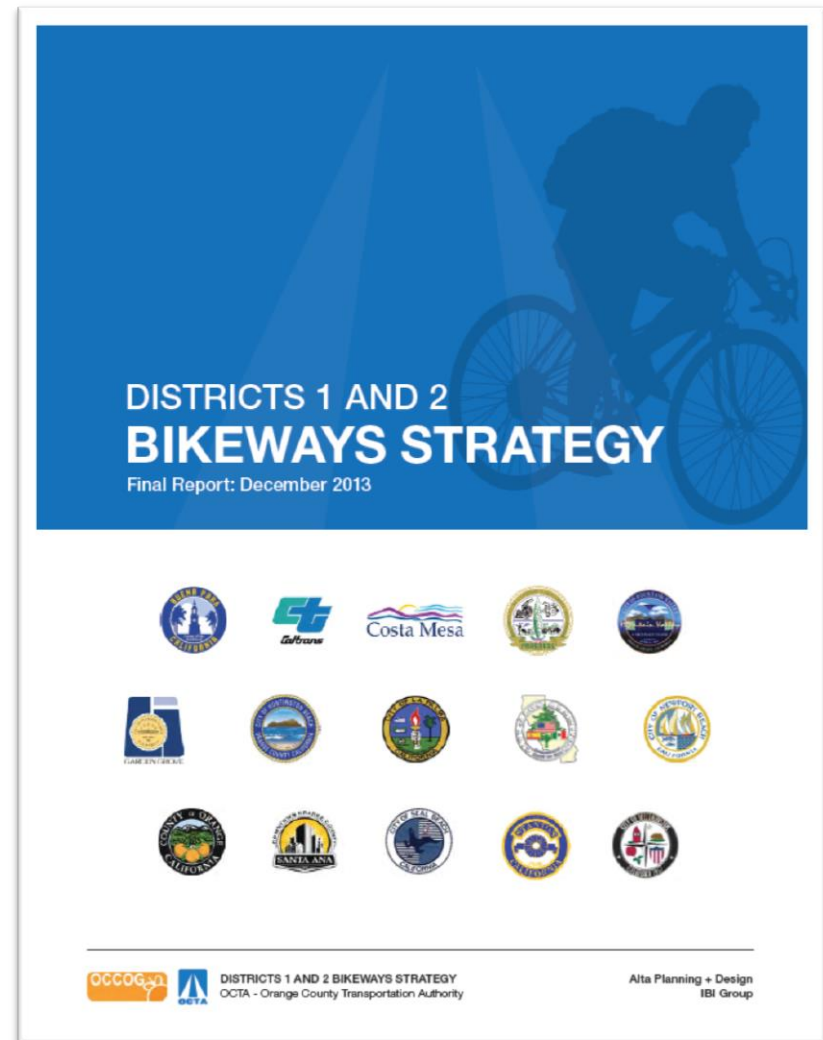
Supervisory District	Bikeways Strategy Status	Feasibility Studies Status
District 4 (pilot)	Complete <i>Winter 2012</i>	Complete <i>Winter 2013</i>
Districts 1 and 2	Complete <i>Winter 2013</i>	Ongoing <i>Scheduled Completion Spring 2014</i>
District 5	Ongoing <i>Scheduled Completion Fall 2014</i>	Future <i>Scheduled Completion Winter 2015</i>
District 3	Future <i>Scheduled Completion Fall 2015</i>	Future <i>Scheduled Completion Winter 2016</i>

Regional Bikeways Network



Districts 1 and 2 Bikeways Strategy

- Completed in December 2013
- 11 bikeway corridors
- 133 miles
- \$81 million - \$100 million in potential projects
- Feasibility studies for top four corridors



Districts 1 and 2 next steps

- Feasibility studies for top four corridors

Potential Regional Bikeway Corridor	Local Jurisdictions
Pacific Electric Right-of-Way (PE ROW)	Buena Park, Cypress, Garden Grove, La Palma, Santa Ana, and Stanton
Pacific Coast Highway	County of Orange, Huntington Beach, Newport Beach, and Seal Beach
Magnolia Avenue - Hoover Street	Fountain Valley, Garden Grove, Huntington Beach, Stanton, and Westminster
Slater Avenue – Segerstrom Avenue	County of Orange, Fountain Valley, Huntington Beach, and Santa Ana

Orange County (OC) Bike Loop

- Primarily off-street bikeways
- Consistent with regional bikeways planning
- Orange County Parks feasibility study
- OCTA project awareness and coordination



District 5 Strategic Plan

- Three project development team meetings
- Three focus area meetings
- Extensive existing bikeways network
- Challenges for casual riders
 - Hilly terrain
 - Higher posted speeds on arterials
 - Wider roadways
- Complete by fall 2014




District 5 Public Participation

Share the Ride/Bike

HOME | ABOUT | CONTACT | NEWS | BIKES | BIKING PROMOTIONS | BIKING PLANNING | BIKING PLANNING PLAN | REGIONAL BIKING PLANNING | NORMALIZED NETWORK ACCESSIBILITY STRATEGY | CALL FOR PROPOSALS | BIKING IN ORANGE COUNTY | BIKESHARE | TRANSIT | VAN/POOL | CALENDAR | TRANSIT MOBILE APP'S | GET CONNECTED


Regional Bikeways Planning

Please take the south Orange County (District 5) bike survey



Help us plan a more bike friendly community

PGI REGIONAL BIKINGWAY CORRIDORS



Map data updated August 2013. Esri, DeLorme, HERE, USGS, N.

BACKGROUND

The Orange County Transportation Authority (OCTA) develops the Commuter Bikeways Strategic Plan (CBSP) every five years which outlines OCTA's role in bikeways planning. These include:

- Supporting regional priorities for optimal use by local jurisdictions
- Assisting in coordinating plans between jurisdictions
- Providing planning and design guidelines, and
- Participating in outreach efforts to encourage bicycle commuting.

The Regional Bikeways Planning effort will expand upon the CBSP to identify potential regional bikeway improvements. The planning process will be iterative and coordinated. OCTA, local jurisdictions will bring projects from concept to completion.


PROJECT OVERVIEW

Regional Bikeways Planning is a countywide effort involving OCTA, the Orange County Council of Governments, local jurisdictions, and bicycle stakeholders. The goal of the effort is to build consensus on key bikeway corridors and to assist local jurisdictions with project development.

SCHEDULE

Supervisory District	Status	Final Document
District 4	Complete	Fourth District Bikeways Strategy
Districts 1 & 2	Complete	Districts 1 & 2 Bikeways Strategy
District 3	Ongoing	Scheduled for 2014 Completion
District 5	Future	Scheduled for 2015 Completion

Webpage



District 5 Regional Bikeways Planning

The Orange County Transportation Authority (OCTA) and Orange County Council of Governments (OCCOG) are conducting transportation in south Orange County (Supervisory District 5). To participate, please complete the survey below. You regular updates at www.octa.net/bikeways. Survey participants can enter to win various bike gear prizes by providing the following information:

1. How often do you ride your bicycle?

4-7 days a week
 2-3 days a week
 Once a week
 Less than once a week

2. Why do you ride your bicycle (check one that applies most often)?

To go to work/school
 To go shopping/run errands; For entertainment; To socialize
 To exercise; For recreation
 Other (please specify)

3. How far do you usually ride your bike?

0-3 miles
 4-6 miles
 7-9 miles

Online Questionnaire



Help us plan a more bike friendly community

Effective bicycle connections enhance mobility by creating more travel options and improving safety for cyclists, as well as drivers and pedestrians. The Orange County Transportation Authority (OCTA) and Orange County Council of Governments (OCCOG) have been teaming up with the cities and the County to enhance key regional bikeway connections and create more awareness through education and outreach. The results of the study will help make bicycling easier and safer.

Learn more and participate!
 Visit www.octa.net/bikeways to review the project area, see the schedule, and learn how you can help us make a more bike friendly Orange County!

Spread the word!
 Share this information with your colleagues and friends.

E-blast



Help us plan a more bike friendly community

To get involved, sign up at: www.octa.net/bikeways

Bus interior cards and bookmarkers

District 5 Bikeways Roundtable

- OCTA's webpage
- OCTA On the Move blog
- OCTA's social media
- E-blast to 1,000+ bicycle stakeholders
- Poster flyers to local bike shops



OCTA Bikeways Collaborative
Supervisory District 5

Bikeways Roundtable

May 28, 5:30-7:30PM

Laguna Hills Community Center, Heritage Room C
25555 Alicia Pkwy, Laguna Hills, CA 92653

Please join the Orange County Transportation Authority, Orange County Council of Governments, Caltrans, County of Orange, and participating agencies* for a roundtable discussion about ongoing efforts to improve regional connectivity for bicycling in southern Orange County. Participants are invited to provide feedback on how to improve regional bikeway connectivity. To keep up-to-date on this planning effort, please visit www.octa.net/bikeways.

*Participating agencies: Aliso Viejo, Dana Point, Irvine, Laguna Beach, Laguna Hills, Laguna Niguel, Laguna Woods, Lake Forest, Mission Viejo, Rancho Santa Margarita, San Clemente, San Juan Capistrano and the Transportation Corridor Agencies.

For more information, contact Marlon Perry:
mperry@octa.net (714) 560-5566



Transit:

Served by OCTA routes 87,91, 212, 216

Driving Directions:

25555 Alicia Pkwy,
Laguna Hills, CA 92653

From 5 Freeway

Exit Alicia Pkwy

(From 5 Northbound go Left on Alicia Pkwy)

(From 5 Southbound go Right on Alicia Pkwy)

Cross over Paseo De Valencia, destination

will be on right

Bike Safety Workshop



- Over 60 attendees
 - Community stakeholders and bike advocates
 - Elected officials
 - City staff
- OCTA's active transportation safety campaign unveiled

Next Steps

- Return to the Board of Directors in summer 2014 to seek policy direction on bikeway uses within PE ROW
- Continue supporting County of Orange to advance the OC Bike Loop
- Complete District 5 bikeways strategy
- Promote active transportation safety campaign
- Hire an active transportation coordinator