


ARTIC

A | CONNEXT



ANAHEIM  TRANSIT. WHERE YOU WANT TO GO.

NEED FOR ARTIC

- Orange County is home to more than 3 million people and is the 5th most densely populated county in the nation
- Significant 14.5 percent population increase projected in Orange County between 2008 and 2035
- Continued demand for Metrolink and Amtrak and other transit services
- Anaheim is the 10th largest city in California
- Anaheim attracts over 20 million annual tourists and visitors per year
- Sports and entertainment venues generate additional traffic



> Metrolink Anaheim Train Station



> Amtrak


- Five bus lines traverse the Platinum Triangle/Resort Area
- Three of the top five busiest bus routes are in the Anaheim Platinum Triangle/Resort Area
- In 2010, 31 percent of all OCTA bus boardings were within the Platinum Triangle/Resort Area
- Annual rail ridership for the Anaheim station was 527,541 (191,661 Metrolink ridership, 335,880 Amtrak).



> OCTA Bus

ARTIC – Conceptual Rendering



ANAHEIM  TRANSIT. WHERE YOU WANT TO GO.

Progressive Design

- Light-filled
- Timeless
- Energy efficient
- LEED Platinum Goal



ARTIC ENVIRONMENTAL BENEFITS

- Eliminates many long-distance car trips, reducing impacts not only in Anaheim, but throughout the region and the state
- Reduced vehicle miles traveled on freeways and arterial streets addressing AB 32/SB 375
- Platinum LEED Certification
- For workers, provides connections to last mile services supporting regional transit



ARTIC ECONOMIC BENEFITS

- Economic stimulus for the local economy
 - Near Term Job Creation – 5,000 jobs
- Creates a metropolitan center by providing transportation infrastructure



COMMUNITY SUPPORT

- Enjoys strong community support from diverse stakeholder audiences (residents, business owners, employees, developers)




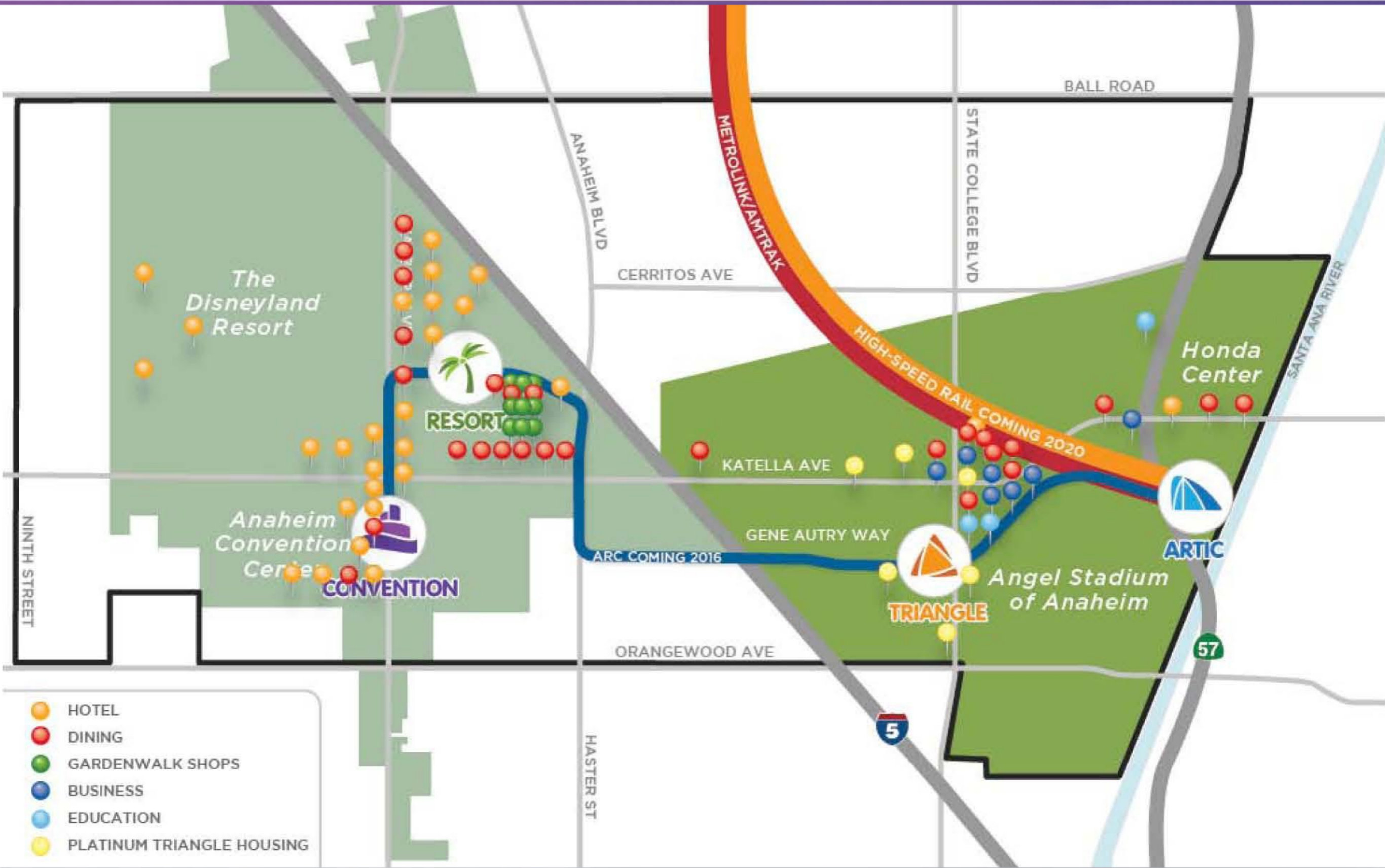
- *Public Private Partnership (P3)*
 - ✓ *Resulting in economic benefits and increased M2 sales tax revenue*
- *Honda Center Partnership*
- *Provides opportunity for Transit Oriented Development (TOD) and mixed land use development in the vicinity*



INTEGRATION OF HIGH-SPEED RAIL



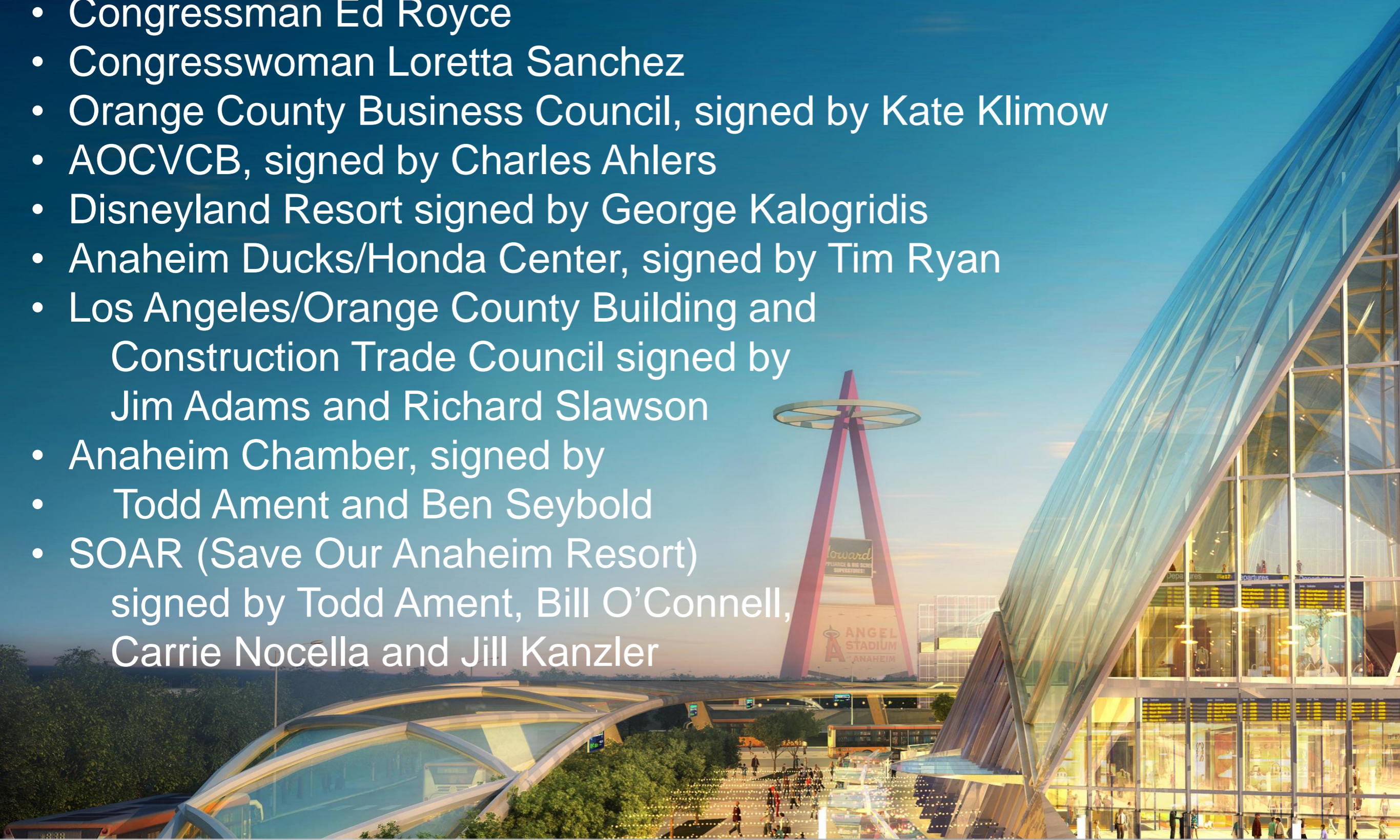
ANAHEIM  **TRANSIT.** WHERE YOU WANT TO GO.



LETTERS OF SUPPORT



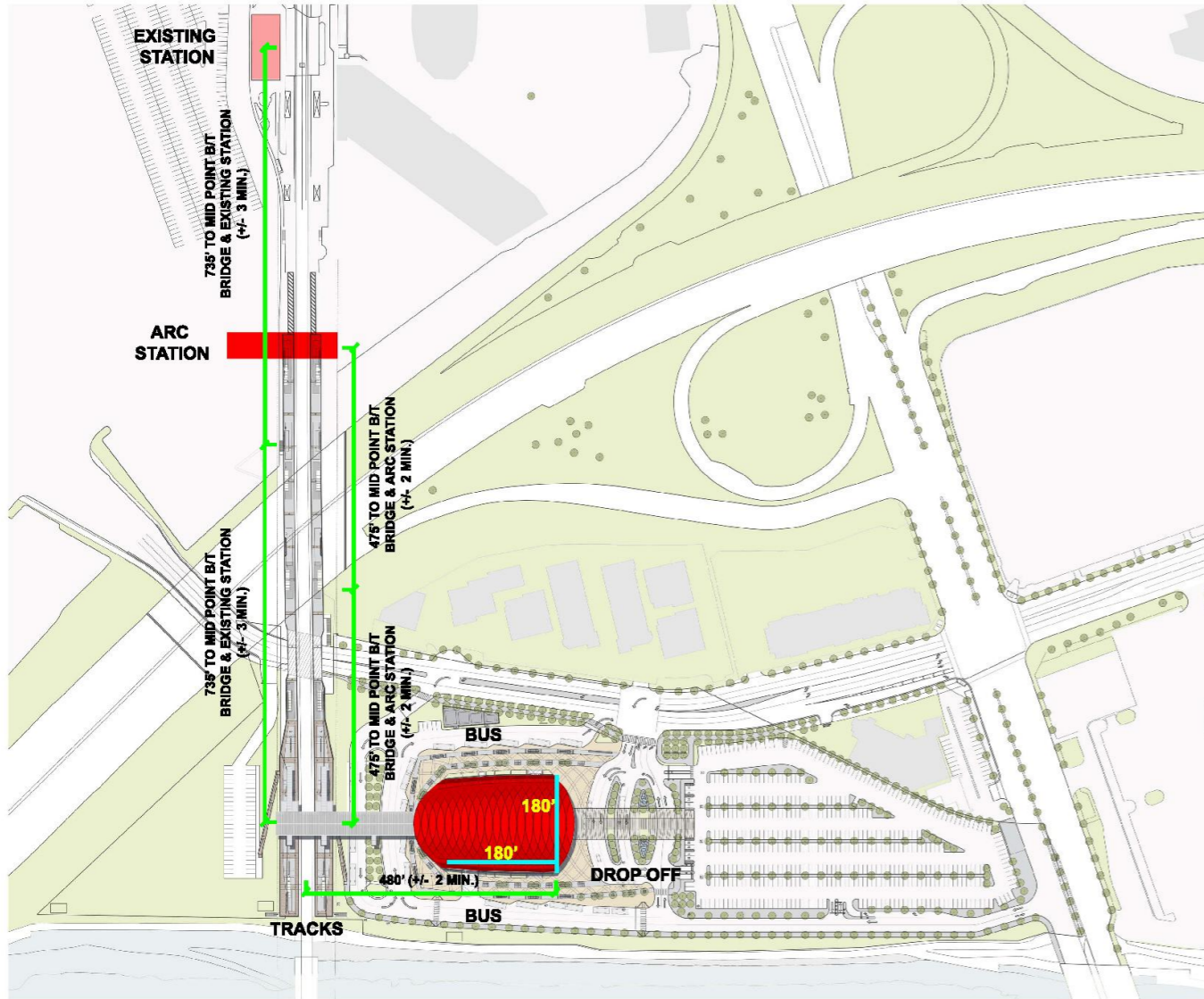
- Congressman Ed Royce
- Congresswoman Loretta Sanchez
- Orange County Business Council, signed by Kate Klimow
- AOCVCB, signed by Charles Ahlers
- Disneyland Resort signed by George Kalogridis
- Anaheim Ducks/Honda Center, signed by Tim Ryan
- Los Angeles/Orange County Building and Construction Trade Council signed by Jim Adams and Richard Slawson
- Anaheim Chamber, signed by Todd Ament and Ben Seybold
- SOAR (Save Our Anaheim Resort) signed by Todd Ament, Bill O'Connell, Carrie Nocella and Jill Kanzler



QUESTIONS

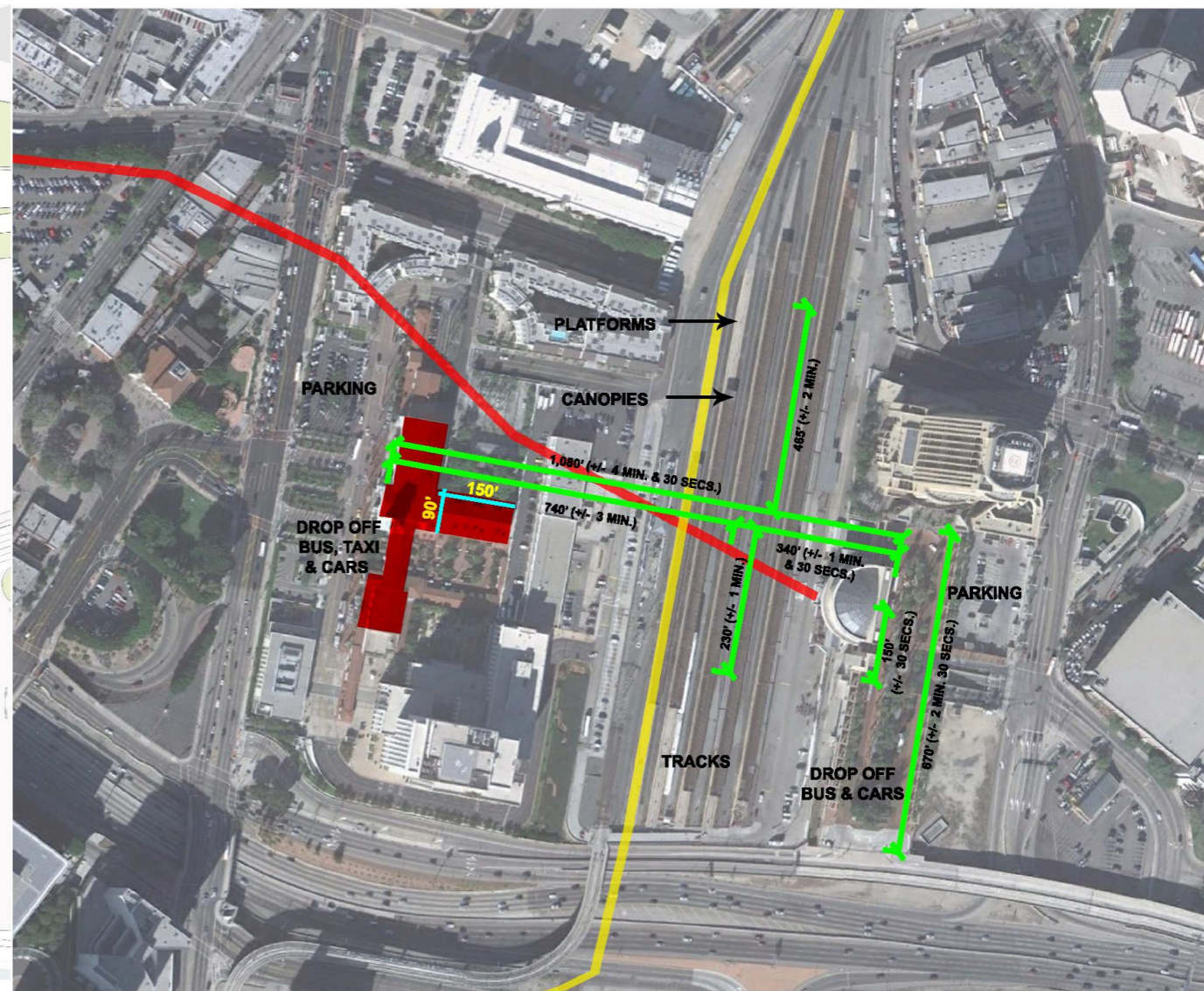
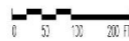


ARTIC STATION/LOS ANGELES UNION STATION



NOTE: A SPEED OF 250 FEET PER MINUTE WAS ASSUMED FOR TRAVELING DISTANCES.

ARTIC STATION
1:100



NOTE: A SPEED OF 250 FEET PER MINUTE WAS ASSUMED FOR TRAVELING DISTANCES.

LOS ANGELES UNION STATION
1:100

METRO GOLD LINE
METRO RED LINE

