



# Sand Canyon Bus Base and Marine Way Update

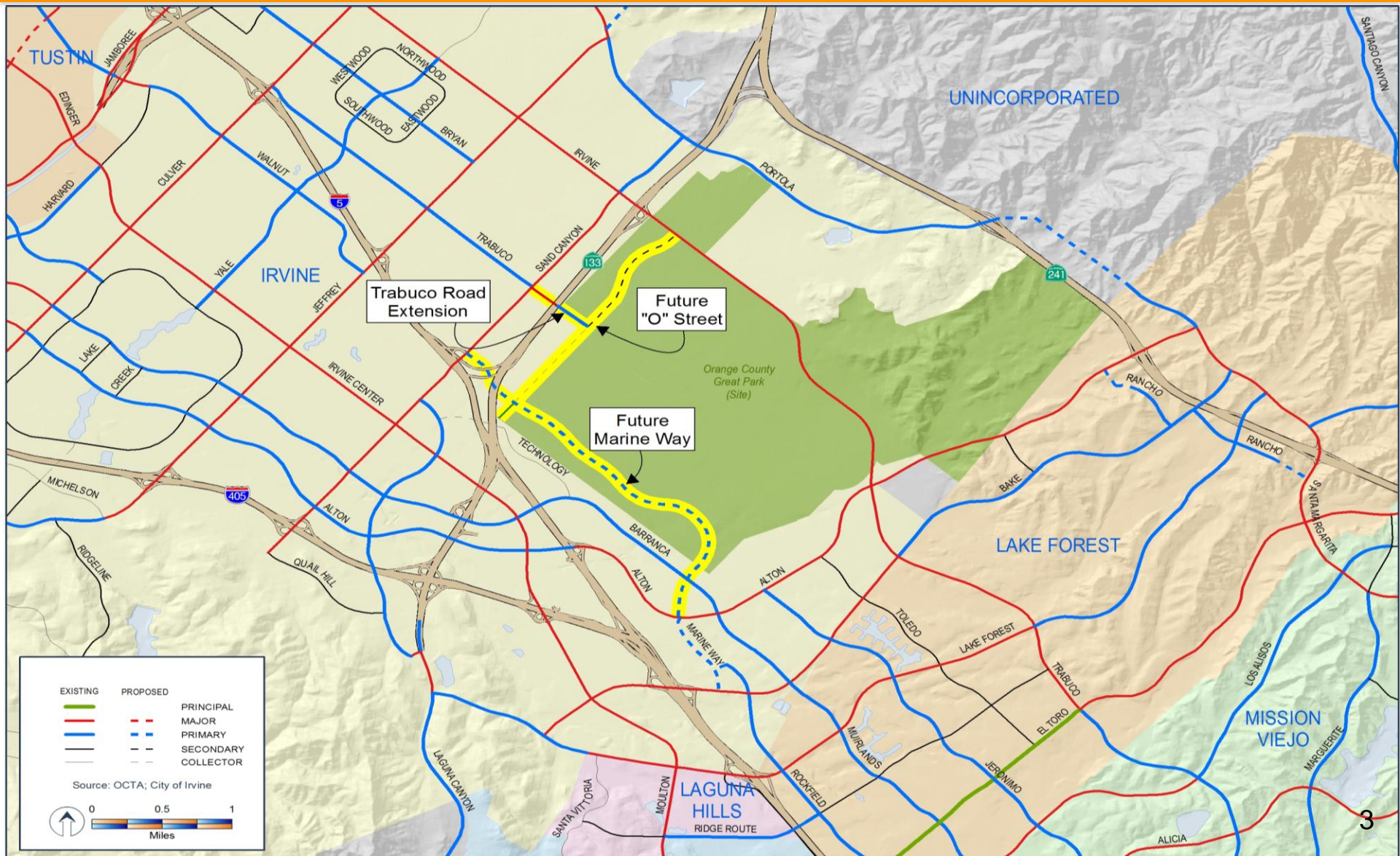


# Existing Sand Canyon Bus Base



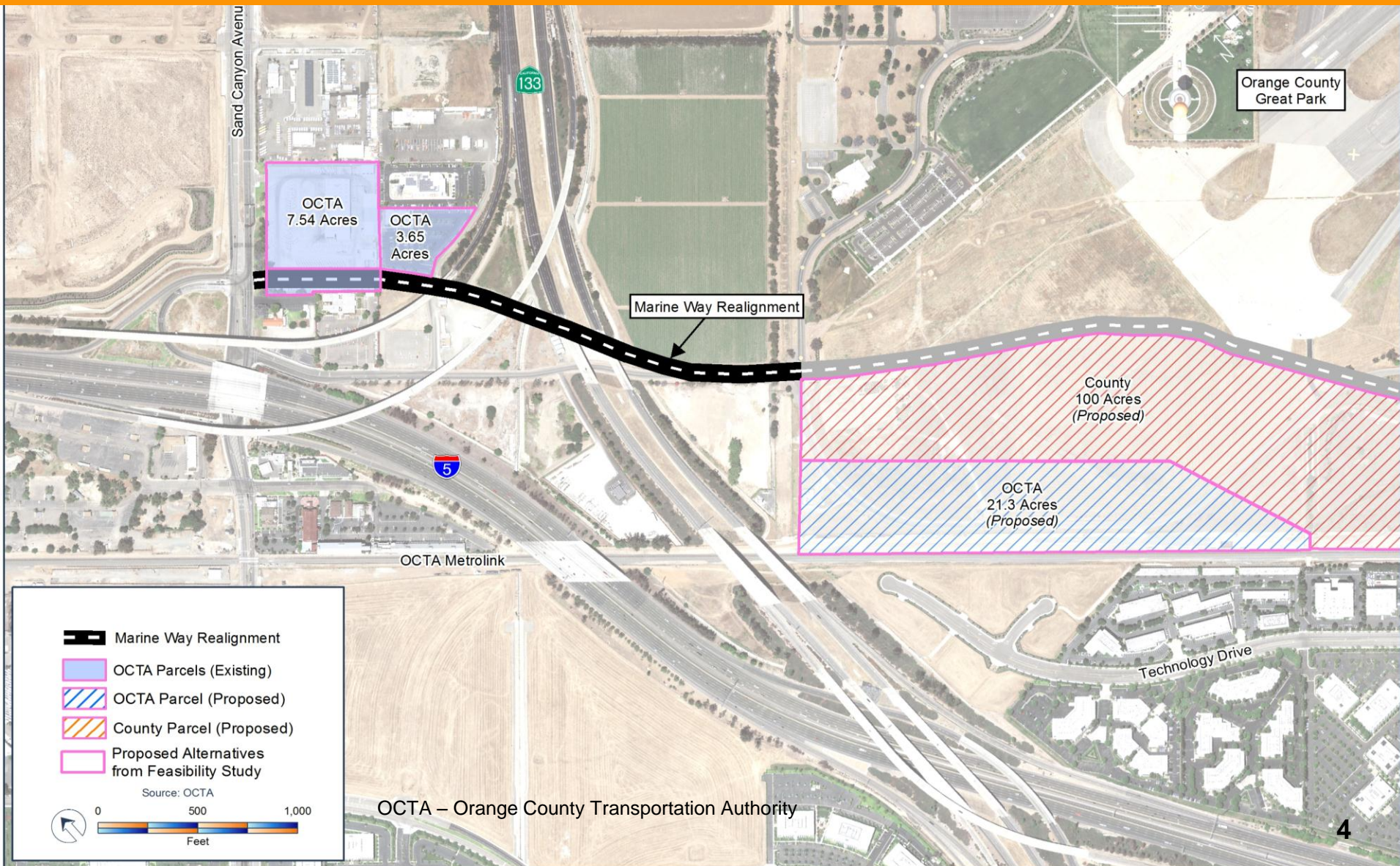


# Great Park Circulation System



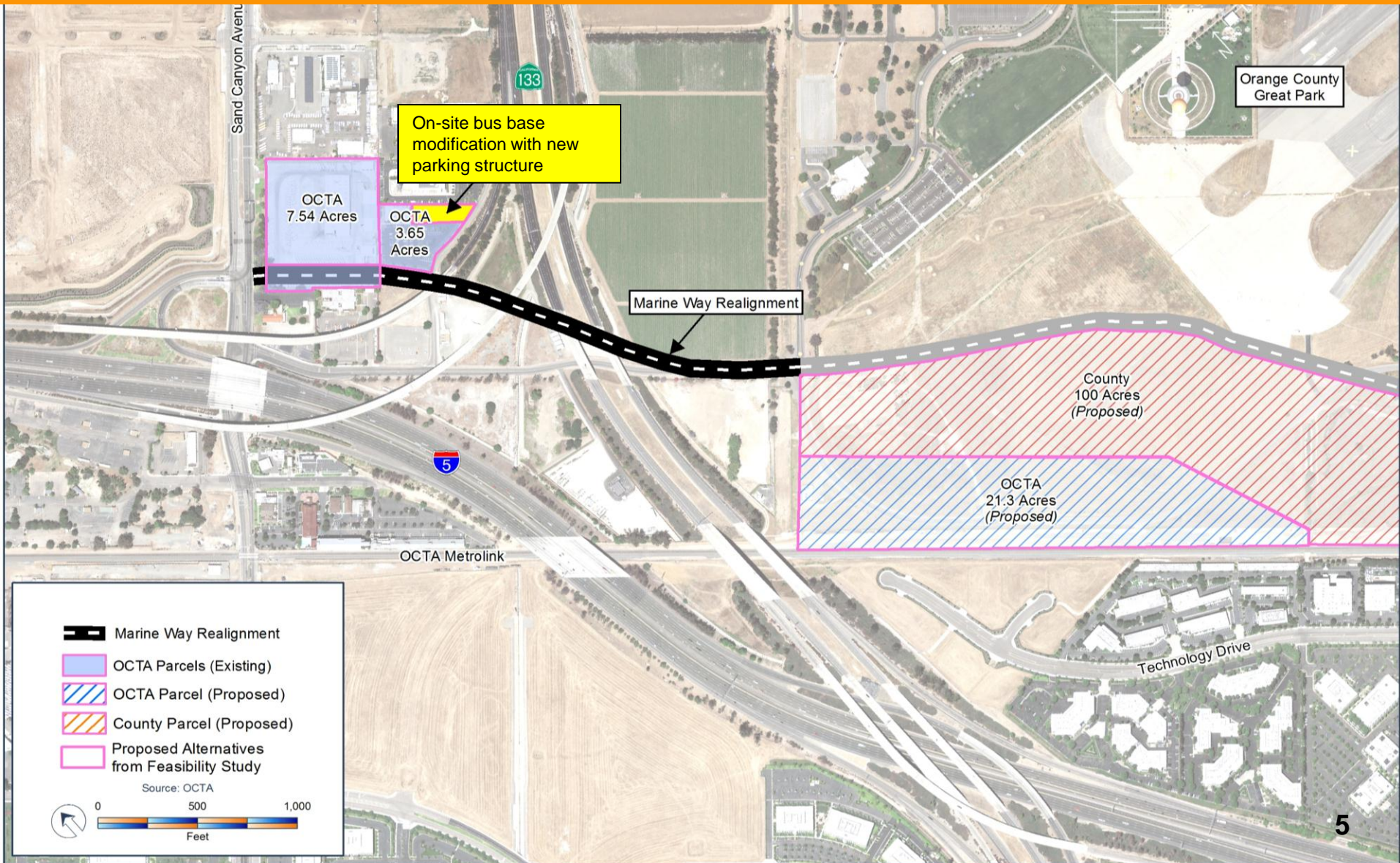


# Marine Way Proposed Alignment



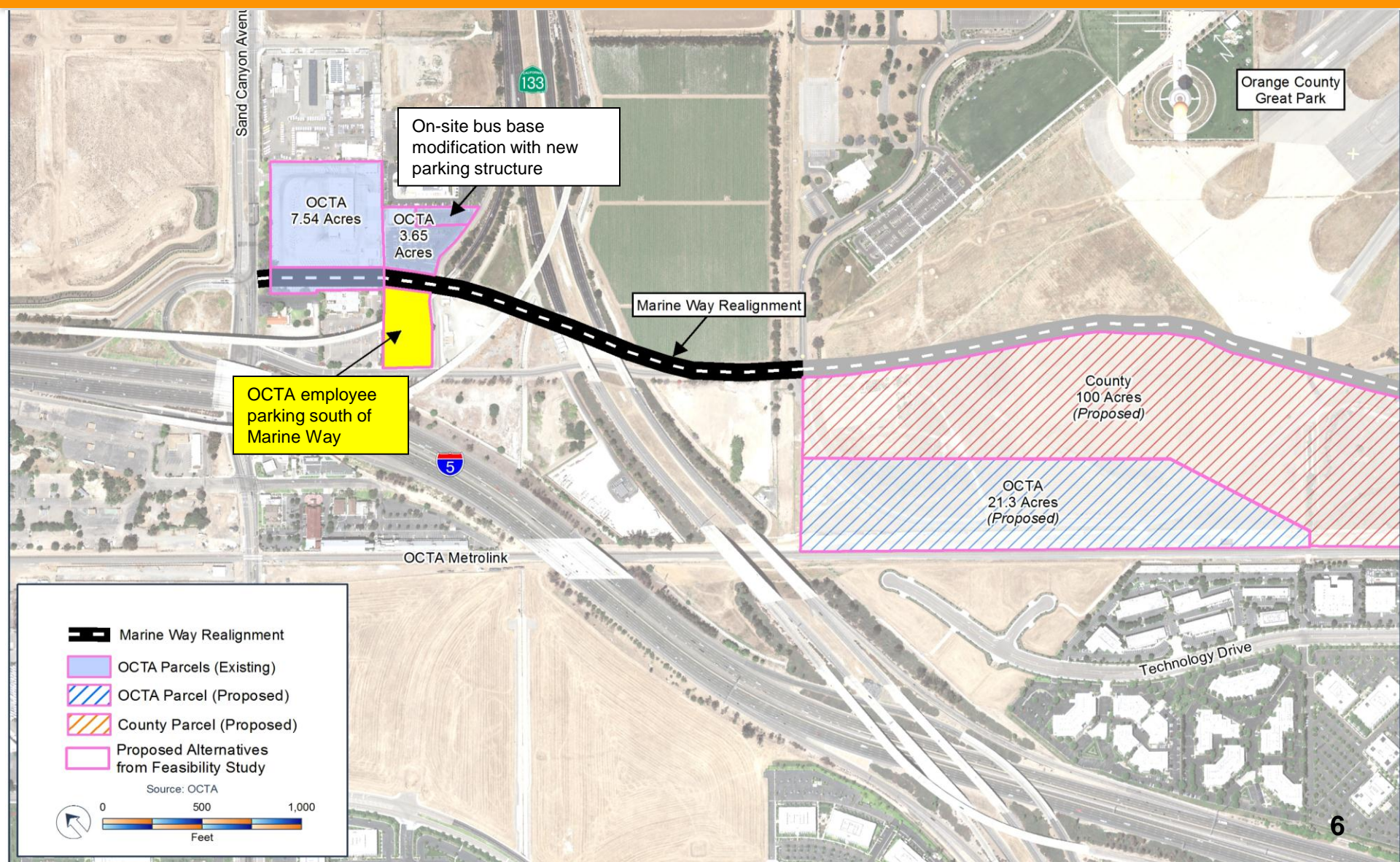


# On-Site Bus Base Modification with New Parking Structure



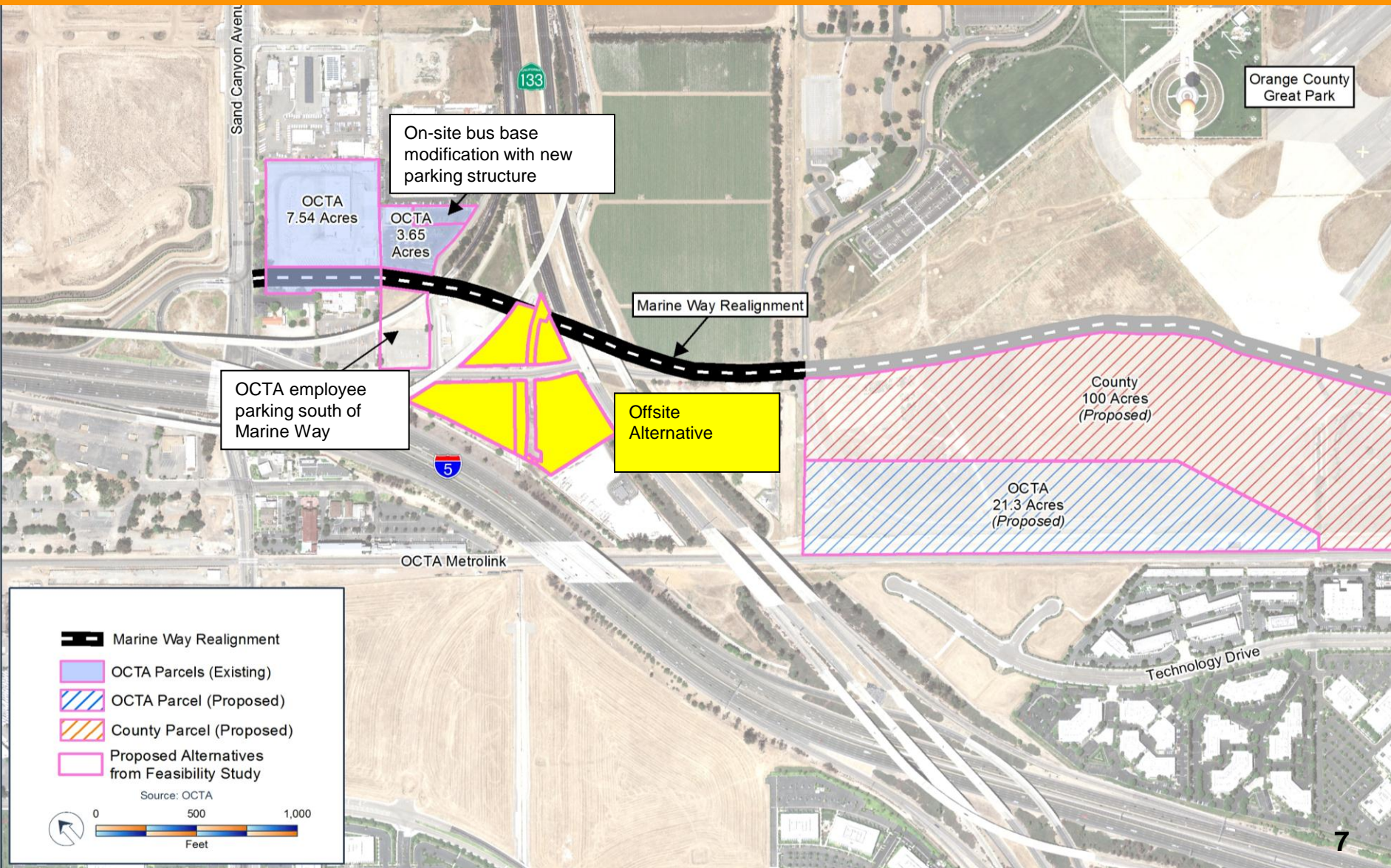


# OCTA Employee Parking South of Marine Way





# Off-Site Alternative



**Legend**

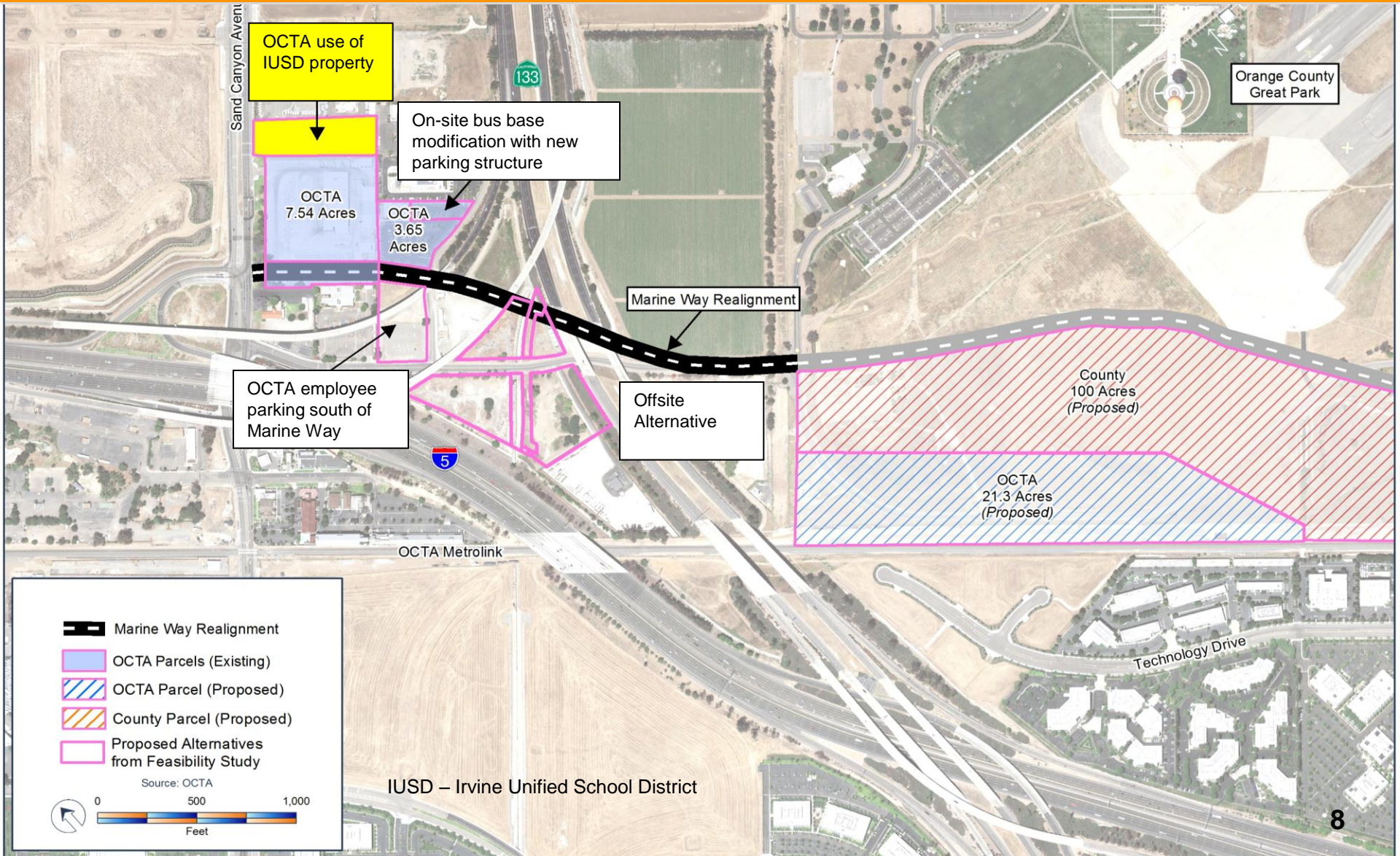
- Marine Way Realignment
- OCTA Parcels (Existing)
- OCTA Parcel (Proposed)
- County Parcel (Proposed)
- Proposed Alternatives from Feasibility Study

Source: OCTA

0 500 1,000  
Feet



# OCTA Use of IUSD Property



**Legend**

- Marine Way Realignment
- OCTA Parcels (Existing)
- OCTA Parcel (Proposed)
- County Parcel (Proposed)
- Proposed Alternatives from Feasibility Study

Source: OCTA

0 500 1,000  
Feet

IUSD – Irvine Unified School District



# Alternatives Cost Estimates

- On site bus base modification with new parking structure = \$46 million
- OCTA employee parking south of Marine Way = \$40 million
- Offsite alternative = \$71 million
- Offsite use of IUSD property = \$69 million

*\*Note: Cost information was current as of the publishing of this staff report; however, it remains subject to change. Further, these estimates solely reflect capital costs and a high-level right-of-way (ROW) estimate.*



# Recommendations

- Direct staff to advance further development of Alternative 1D, concurrent with continued operations of the Sand Canyon Bus Base
- Authorize the Chief Executive Officer, or his designee, to initiate independent ROW assessment of the Sand Canyon Bus Base
- Direct staff to return and seek Board of Directors' approval of a memorandum of understanding or agreement on a preferred alternative