

Orange County Transportation Authority



Sales Tax Review Meeting

2nd Quarter 2011

December 14, 2011

Transportation Authorities

Sales Tax Net Cash Receipts: Three Advances Plus Clean-Up Payment

	% CHANGE BY MONTH ENDED QUARTER						FISCAL YEAR TO DATE				MOST RECENT FOUR QUARTERS TOTAL			
	Jun-09	Sep-09	Dec-09	Mar-09	Jun-10	Sep-10	Jul-10 thru	Jul-11 thru			Oct-09 thru	Oct-10 thru		
	Jun-10	Sep-10	Dec-10	Mar-10	Jun-11	Sep-11	Sep-10	Sep-11	\$ Chg	% Chg	Sep-10	Sep-11	\$ Chg	% Chg
	10Q1	10Q2	10Q3	10Q4	11Q1	11Q2	1 Quarter	1 Quarter						
Last Year Cash Received >														
This Year Cash Received >														
Calendar Sales Quarter >														
LACMTA	-0.6	5.8	4.3	5.9	5.8	9.5	143,836,239	157,535,802	13,699,563	9.5	565,787,054	601,931,508	36,144,454	6.4
LACMTA	-0.6	5.8	4.3	5.9	5.8	9.5	143,826,427	157,527,183	13,700,756	9.5	565,745,852	601,882,825	36,136,973	6.4
LACMTA (1/2%)	0.0	51,050.3	11.0	6.6	7.3	9.4	143,112,001	156,559,123	13,447,122	9.4	551,479,704	598,647,074	47,167,370	8.6
VTA 1976 Sales Tax	7.9	17.7	6.3	10.5	9.2	12.6	140,036,709	153,601,839	13,565,130	9.7	140,036,709	153,601,839	13,565,130	9.7
VTA 2000 Measure A	9.2	17.5	6.6	10.6	9.7	12.0	139,305,038	152,855,103	13,550,065	9.7	139,305,038	152,855,102	13,550,064	9.7
OCTA	-0.2	8.0	4.4	6.2	7.2	8.5	56,342,563	61,121,168	4,778,605	8.5	219,271,960	233,691,540	14,419,580	6.6
SANDAG TRANSNET	2.8	7.7	6.6	6.9	7.6	8.5	53,457,973	58,002,722	4,544,749	8.5	208,504,752	223,939,663	15,434,911	7.4
BART	0.4	9.9	3.6	6.4	9.9	8.8	43,688,810	47,528,914	3,840,104	8.8	170,944,302	183,092,211	12,147,909	7.1
RCTC	0.1	7.2	3.3	7.4	9.6	10.5	29,481,404	32,584,252	3,102,848	10.5	114,526,253	123,439,833	8,913,580	7.8
San Joaquin C.O.G.	3.6	8.0	5.0	8.4	7.2	13.2	9,345,780	10,577,100	1,231,320	13.2	36,697,540	39,801,838	3,104,298	8.5
SMART	5.5	9.2	4.5	4.1	8.4	10.0	6,287,085	6,916,878	629,793	10.0	24,623,552	26,268,836	1,645,284	6.7
Los Angeles Co.	-0.2	5.3	3.3	5.9	4.6	9.5	1,143,221,671	1,210,088,349	66,866,678	5.8	1,143,221,671	1,210,088,348	66,866,677	5.8
Orange Co.	-0.4	8.9	3.9	5.8	8.4	8.5	468,042,234	498,979,349	30,937,115	6.6	468,042,233	498,979,349	30,937,116	6.6
San Diego Co.	2.6	7.6	4.4	6.7	7.5	7.7	406,383,856	433,177,063	26,793,207	6.6	406,383,859	433,177,062	26,793,203	6.6
Santa Barbara Co.	0.4	8.0	-0.1	2.7	8.4	8.9	48,579,569	50,946,105	2,366,536	4.9	48,579,569	50,946,106	2,366,537	4.9
Ventura Co.	1.4	4.8	2.6	5.1	7.3	9.4	97,681,807	103,581,892	5,900,085	6.0	97,681,806	103,581,892	5,900,086	6.0
South Coast	0.4	6.6	3.5	5.9	6.1	8.9	2,163,909,137	2,296,772,758	132,863,621	6.1	2,163,909,138	2,296,772,757	132,863,619	6.1
Inland Empire	-0.4	6.1	3.6	6.0	9.2	10.7	467,903,775	502,466,077	34,562,302	7.4	467,903,775	502,466,077	34,562,302	7.4
Other Southern	-16.4	9.0	10.8	9.4	30.1	7.0	21,351,743	24,219,001	2,867,258	13.4	21,351,744	24,219,001	2,867,257	13.4
Southern California	0.1	6.5	3.6	6.0	6.9	9.2	2,653,164,655	2,823,457,836	170,293,181	6.4	2,653,164,657	2,823,457,835	170,293,178	6.4
Central Coast	3.1	9.4	3.5	4.7	8.3	9.6	111,101,424	118,240,437	7,139,013	6.4	111,101,423	118,240,437	7,139,014	6.4
Central Valley	-2.5	5.5	6.0	12.3	15.3	18.7	414,556,836	468,546,158	53,989,322	13.0	414,556,837	468,546,160	53,989,323	13.0
North Coast	14.0	5.8	1.9	0.9	-4.9	7.8	40,183,475	40,780,134	596,659	1.5	40,183,474	40,780,135	596,661	1.5
Other Northern	6.9	6.7	5.0	6.3	0.7	8.1	48,162,467	50,633,280	2,470,813	5.1	48,162,469	50,633,278	2,470,809	5.1
S.F. Bay Area	2.4	11.1	3.8	7.1	8.2	10.8	1,027,484,970	1,104,326,128	76,841,158	7.5	1,027,484,972	1,104,326,129	76,841,157	7.5
Sacramento Valley	-1.4	5.2	1.5	3.0	4.5	7.2	327,741,356	340,936,779	13,195,423	4.0	327,741,355	340,936,781	13,195,426	4.0
Northern California	1.0	8.5	3.9	7.2	8.6	11.7	1,969,230,528	2,123,462,916	154,232,388	7.8	1,969,230,530	2,123,462,920	154,232,390	7.8
State Total	0.5	7.3	3.7	6.5	7.6	10.3	4,622,395,183	4,946,920,752	324,525,569	7.0	4,622,395,187	4,946,920,755	324,525,568	7.0

Jurisdiction	General Retail	Food Products	Trans.	Const.	Business to Business	Misc.	Apr-Jun 2011 Total	Apr-Jun 2010 Total	% Chg	Largest Gain	2nd Largest Gain	Largest Decline	2nd Largest Decline	
SOUTH COAST														
LOS ANGELES METROPOLITAN TRANSPORTATION AUTHORITY														
	L.A. MTA	4.6%	2.7%	16.8%	1.8%	6.4%	5.2%	308,180,418	288,204,888	6.9%	Service Stations	Energy Sales	Business Services	Light Industry
ORANGE COUNTY TRANSPORTATION AUTHORITY														
	OCTA	6.8%	3.3%	16.4%	0.3%	-0.6%	14.5%	59,560,119	56,063,887	6.2%	Service Stations	Department Stores	Light Industry	Bldg.Matls-Retail
SAN DIEGO REGIONAL TRANSPORTATION COMMISSION														
	SANDAG Transnet	5.5%	4.1%	14.8%	-0.5%	6.9%	6.1%	56,878,859	53,226,028	6.9%	Service Stations	Auto Sales - New	Bldg.Matls-Retail	Heavy Industry
ORANGE COUNTY														
	Aliso Viejo	2.0%	2.2%	2.4%	68.1%	-0.5%	-3.9%	952,114	893,307	6.6%	Bldg.Matls-Whsle	Business Services	Office Equipment	Food Processing Eqp
	Anaheim	9.9%	2.2%	24.1%	3.0%	-18.4%	4.8%	13,039,914	12,519,771	4.2%	Service Stations	Miscellaneous Retail	Heavy Industry	Furniture/Appliance
	Brea	5.6%	11.2%	47.0%	24.3%	16.8%	144.5%	3,995,336	3,499,489	14.2%	Bldg.Matls-Whsle	Service Stations	Bldg.Matls-Retail	Recreation Products
	Buena Park	-0.5%	5.2%	10.0%	13.5%	13.3%	-7.4%	5,257,631	4,799,499	9.5%	Office Equipment	Auto Sales - New	Miscellaneous Retail	Leasing
	Costa Mesa	8.0%	5.9%	7.1%	-4.4%	-7.6%	-8.6%	9,031,013	8,575,749	5.3%	Service Stations	Miscellaneous Retail	Auto Sales - Used	Light Industry
	Cypress	12.2%	4.8%	12.0%	-10.7%	7.3%	11.9%	2,611,354	2,480,460	5.3%	Chemical Products	Department Stores	Bldg.Matls-Retail	Office Equipment
	Dana Point	3.9%	8.7%	1.8%	12.7%	13.0%	9.3%	988,375	926,044	6.7%	Restaurants	Service Stations	Misc. Vehicle Sales	Auto Sales - Used
	Fountain Valley	11.6%	5.8%	25.3%	4.1%	-2.5%	-2.9%	2,373,683	2,139,874	10.9%	Service Stations	Department Stores	Electronic Equipment	Miscellaneous Retail
	Fullerton	7.3%	2.0%	16.5%	16.4%	8.2%	33.2%	3,959,838	3,592,945	10.2%	Service Stations	Department Stores	Office Equipment	Auto Parts/Repair
	Garden Grove	11.7%	0.7%	18.9%	5.3%	2.3%	-6.7%	4,063,769	3,697,049	9.9%	Service Stations	Auto Sales - New	Bldg.Matls-Retail	Leasing
	Huntington Beach	-12.1%	1.9%	16.2%	-6.9%	78.9%	-16.2%	6,654,775	5,914,497	12.5%	Office Equipment	Service Stations	Miscellaneous Retail	Bldg.Matls-Retail
	Irvine	8.6%	6.6%	16.5%	6.1%	1.4%	-7.9%	10,675,583	9,991,044	6.9%	Service Stations	Light Industry	Heavy Industry	Office Equipment
	La Habra	8.4%	0.3%	12.7%	-8.5%	4.3%	1.0%	1,867,462	1,774,243	5.3%	Department Stores	Service Stations	Auto Sales - New	Bldg.Matls-Retail
	La Palma	95.7%	-5.5%	178.0%	-26.2%	-3.1%	6.9%	1,359,440	638,732	112.8%	Service Stations	Miscellaneous Retail	Food Markets	Business Services
	Laguna Beach	9.3%	8.3%	14.7%	-1.8%	21.1%	27.2%	922,183	843,472	9.3%	Restaurants	Miscellaneous Retail	Florist/Nursery	Auto Parts/Repair
	Laguna Hills	-2.5%	-1.3%	26.3%	-4.5%	15.4%	7.7%	1,188,000	1,134,495	4.7%	Service Stations	Chemical Products	Furniture/Appliance	Electronic Equipment
	Laguna Niguel	6.5%	6.5%	16.3%	11.1%	1.0%	-3.0%	2,317,640	2,138,155	8.4%	Department Stores	Service Stations	Miscellaneous Retail	Auto Sales - New
	Laguna Woods	0.0%	-0.1%	17.6%	-7.1%	19.7%	-9.3%	193,545	188,839	2.5%	Service Stations	Leasing	Bldg.Matls-Retail	Recreation Products
	Lake Forest	2.7%	1.1%	31.6%	-4.5%	23.7%	-31.7%	2,921,168	2,628,712	11.1%	Service Stations	Heavy Industry	Electronic Equipment	Light Industry
	Los Alamitos	10.8%	0.4%	16.6%	9.0%	37.3%	-68.6%	586,010	520,749	12.5%	Electronic Equipment	Bldg.Matls-Retail	Health & Government	Auto Parts/Repair
	Mission Viejo	3.6%	1.4%	18.8%	-7.8%	0.8%	-4.9%	3,352,799	3,157,890	6.2%	Service Stations	Auto Sales - New	Chemical Products	Auto Sales - Used
	Newport Beach	3.8%	6.7%	7.5%	5.3%	10.7%	-4.1%	5,896,004	5,535,846	6.5%	Service Stations	Restaurants	Leasing	Food Markets
	Orange	8.6%	3.1%	8.1%	9.2%	25.5%	4.3%	7,468,672	6,600,472	13.2%	Energy Sales	Service Stations	Food Processing Eqp	Auto Sales - New
	Orange County	-6.7%	0.8%	-10.0%	-9.6%	21.8%	-22.6%	1,742,272	1,661,639	4.9%	Energy Sales	Light Industry	Service Stations	Leasing
	Placentia	-7.6%	17.5%	-4.0%	21.5%	13.9%	-20.3%	1,110,104	1,041,786	6.6%	Food Markets	Bldg.Matls-Whsle	Auto Sales - New	Furniture/Appliance
	Rancho Santa Margarita	3.1%	1.2%	37.2%	5.6%	25.2%	-14.4%	1,240,424	1,070,044	15.9%	Auto Parts/Repair	Service Stations	Miscellaneous Retail	Food Markets
	San Clemente	4.3%	-0.5%	30.6%	-27.5%	4.7%	5.7%	1,557,769	1,480,700	5.2%	Service Stations	Office Equipment	Bldg.Matls-Whsle	Business Services
	San Juan Capistrano	1.4%	3.4%	6.0%	13.0%	38.8%	6.7%	1,384,527	1,289,296	7.4%	Heavy Industry	Service Stations	Auto Sales - New	Furniture/Appliance
	Santa Ana	-0.3%	3.5%	13.2%	2.4%	-0.4%	50.7%	8,348,898	8,007,175	4.3%	Service Stations	Bldg.Matls-Whsle	Light Industry	Recreation Products
	Seal Beach	2.8%	0.1%	9.2%	-15.6%	116.9%	-7.1%	1,096,410	878,582	24.8%	Heavy Industry	Service Stations	Food Processing Eqp	Light Industry
	Stanton	-3.4%	-8.9%	23.9%	0.3%	9.3%	-9.0%	757,707	725,637	4.4%	Service Stations	Auto Sales - Used	Restaurants	Auto Parts/Repair
	Tustin	13.0%	3.4%	14.8%	-9.9%	-11.8%	-25.4%	4,178,124	3,940,757	6.0%	Service Stations	Recreation Products	Light Industry	Leasing
	Villa Park	-2.4%	-1.2%	-100.0%	165.0%	38.1%	4.9%	29,237	32,013	-8.7%	Bldg.Matls-Whsle	Apparel Stores	Auto Parts/Repair	Miscellaneous Retail
	Westminster	1.5%	1.1%	6.0%	-21.3%	4.4%	-19.7%	2,841,997	2,816,599	0.9%	Service Stations	Food Markets	Bldg.Matls-Whsle	Auto Sales - Used
	Yorba Linda	5.2%	-1.6%	27.0%	27.2%	-12.6%	7.3%	1,188,875	1,158,687	2.6%	Service Stations	Furniture/Appliance	Office Equipment	Miscellaneous Retail

OCTA

BENCHMARK YEAR 2011Q2 COMPARED TO BENCHMARK YEAR 2010Q2

ECONOMIC CATEGORY ANALYSIS									
	OCTA	California Statewide	S.F. Bay Area	Sacramento Valley	Central Valley	South Coast	Inland Empire	North Coast	Central Coast
General Retail <i>% of Total / % Change</i>	31.2 / 5.5	30.1 / 1.3	29.5 / 2.8	30.9 / 2.7	32.5 / 3.7	30.1 / 0.8	28.6 / -3.4	29.7 / 0.5	32.6 / -1.0
Food Products <i>% of Total / % Change</i>	17.1 / 2.6	19.1 / 1.0	19.9 / 3.2	17.3 / 2.5	16.9 / 1.4	19.5 / 0.7	16.9 / -5.8	19.1 / 1.2	30.3 / 1.4
Construction <i>% of Total / % Change</i>	8.4 / 7.3	8.5 / 0.2	8.3 / 1.5	10.2 / 0.8	10.4 / 3.0	7.9 / 0.1	9.8 / -5.7	11.9 / -4.7	8.8 / -2.1
Transportation <i>% of Total / % Change</i>	21.4 / 11.4	23.4 / 9.1	20.4 / 9.8	26.0 / 10.2	25.0 / 14.4	23.7 / 8.2	27.2 / 6.1	29.0 / 13.4	21.0 / 14.6
Business to Business <i>% of Total / % Change</i>	19.4 / 1.6	17.6 / 5.3	20.8 / 7.5	14.0 / 0.2	13.8 / 12.0	17.6 / 4.8	15.6 / -1.6	9.3 / 8.9	5.8 / -7.2
Miscellaneous <i>% of Total / % Change</i>	2.4 / 9.6	1.3 / -2.3	1.2 / -4.0	1.6 / 0.3	1.4 / 28.5	1.2 / -3.1	2.0 / -7.9	1.0 / -60.2	1.5 / -2.4
Total	100.0 / 5.7	100.0 / 3.5	100.0 / 5.0	100.0 / 3.9	100.0 / 7.1	100.0 / 3.0	100.0 / -1.5	100.0 / 2.6	100.0 / 2.1

General Retail: Apparel Stores, Department Stores, Furniture/Appliances, Drug Stores, Recreation Products, Florist/Nursery, and Misc. Retail

Food Products: Restaurants, Food Markets, Liquor Stores, and Food Processing Equipment

Construction: Building Materials Retail and Building Materials Wholesale

Transportation: Auto Parts/Repair, Auto Sales - New, Auto Sales - Used, Service Stations, and Misc. Vehicle Sales

Business to Business: Office Equip., Electronic Equip., Business Services, Energy Sales, Chemical Products, Heavy Industry, Light Industry, and Leasing

Miscellaneous: Health & Government, Miscellaneous Other, and Closed Account Adjustments

ECONOMIC SEGMENTS ANALYSIS									
	OCTA	California Statewide	S.F. Bay Area	Sacramento Valley	Central Valley	South Coast	Inland Empire	North Coast	Central Coast
Largest Segment <i>% of Total / % Change</i>	Restaurants 12.3 / 3.2	Restaurants 13.0 / 1.8	Restaurants 13.5 / 4.2	Department Stores 13.1 / 3.4	Department Stores 15.4 / 3.9	Restaurants 13.9 / 1.5	Department Stores 11.6 / -7.1	Department Stores 12.8 / 1.4	Restaurants 19.8 / 1.1
2nd Largest Segment <i>% of Total / % Change</i>	Department Stores 11.0 / 5.3	Department Stores 11.1 / 0.9	Department Stores 9.7 / 1.8	Restaurants 10.7 / 1.7	Service Stations 11.9 / 21.0	Department Stores 10.7 / 0.8	Service Stations 12.4 / 9.6	Services Stations 14.0 / 22.3	Misc. Retail 10.1 / -5.3
3rd Largest Segment <i>% of Total / % Change</i>	Service Stations 8.9 / 16.7	Service Stations 10.3 / 14.9	Service Stations 8.9 / 15.9	Service Stations 10.5 / 15.6	Restaurants 9.9 / 1.3	Service Stations 10.3 / 14.1	Restaurants 10.7 / -5.1	Restaurants 9.8 / 1.2	Service Stations 9.7 / 19.4

OCTA

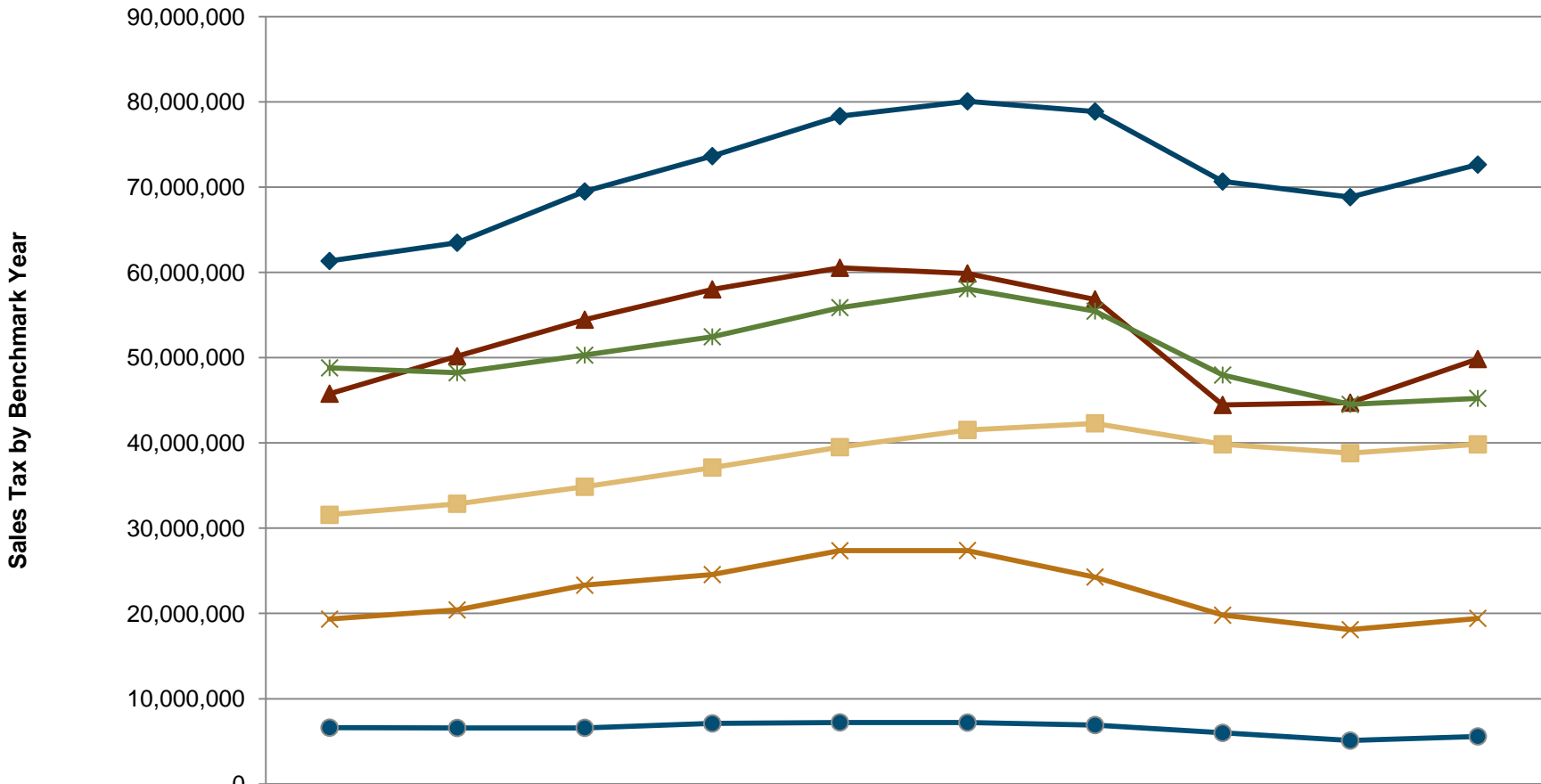
HISTORICAL AMOUNTS BY BENCHMARK YEAR

ECONOMIC CATEGORY	%	2011/2	2011/1	2010/4	2010/3	2010/2	2010/1	2009/4	2009/3	2009/2
GENERAL RETAIL	31.2	72,646,864 H	71,502,953	70,668,388	69,727,941	68,830,203	68,406,247	68,197,916 L	68,844,235	70,666,698
TRANSPORTATION	21.4	49,847,986 H	47,962,935	46,119,124	45,001,410	44,727,481	43,402,634	42,407,390	42,018,637 L	44,460,411
BUSINESS TO BUSINESS	19.4	45,223,906 <	45,283,325	44,980,401	44,634,693	44,522,276	43,855,813 L	44,136,991	45,552,453	47,965,356 H
FOOD PRODUCTS	17.1	39,832,039	39,511,421	39,151,627	38,949,800	38,807,274	38,683,302 L	38,837,554	39,271,969	39,841,247 H
CONSTRUCTION	8.4	19,425,618	19,410,213	18,937,326	18,600,652	18,098,297	17,755,942 L	18,015,999	18,444,807	19,798,840 H
MISCELLANEOUS	2.4	5,575,007	5,384,332	5,358,573	5,292,148	5,088,092 L	5,105,608	5,300,627	5,490,127	5,992,996 H
TOTALS	100.0	232,551,420 H	229,055,179	225,215,439	222,206,644	220,073,623	217,209,546	216,896,477 L	219,622,228	228,725,548

ECONOMIC SEGMENT	%	2011/2	2011/1	2010/4	2010/3	2010/2	2010/1	2009/4	2009/3	2009/2
RESTAURANTS	12.3	28,687,152 H	28,482,961	28,210,758	27,971,606	27,794,388	27,660,354 L	27,792,739	28,106,974	28,629,943
DEPARTMENT STORES	11.0	25,609,439 H	25,170,455	24,931,005	24,655,052	24,309,934	24,161,263	23,827,079 L	23,959,640	24,462,152
SERVICE STATIONS	8.9	20,644,518 H	19,221,061	18,325,598	17,994,538	17,689,982	17,114,870	16,048,488	15,582,964 L	17,287,556
MISCELLANEOUS RETAIL	8.5	19,872,351 H	19,484,640	19,165,026	18,899,795	18,680,684 L	18,696,626	18,786,112	19,024,923	19,641,783
AUTO SALES - NEW	8.2	19,013,256 H	18,747,586	18,060,414	17,505,019	17,621,183	16,956,210	16,969,057	16,817,419 L	17,242,025
LIGHT INDUSTRY	6.6	15,294,902 <	15,527,795	15,545,457	15,598,068	15,590,904	15,261,718 L	15,409,904	15,824,082	16,753,905 H
APPAREL STORES	4.8	11,094,381 H	10,912,143	10,794,035	10,552,852	10,417,036	10,400,066	10,258,997 L	10,268,055	10,476,595
BLDG.MATLS-RETAIL	4.2	9,745,392 <	9,919,303 H	9,770,246	9,544,281	9,258,778	8,941,474	8,854,590	8,837,232 L	9,246,212
BLDG.MATLS-WHSLE	4.2	9,680,226	9,490,910	9,167,080	9,056,371	8,839,519	8,814,468 L	9,161,409	9,607,575	10,552,628 H
FURNITURE/APPLIANCE	4.1	9,566,331 H	9,466,313	9,360,335	9,208,875	9,021,691	8,750,452 L	8,898,531	9,118,334	9,509,848
FOOD MARKETS	3.8	8,891,839	8,805,379	8,741,679 L	8,767,758	8,808,245	8,788,923	8,792,420	8,914,873	8,925,432 H
OFFICE EQUIPMENT	3.6	8,481,672	8,287,585	8,188,975 L	8,318,899	8,392,584	8,381,532	8,442,869	8,346,987	8,535,383 H
LEASING	2.6	6,125,615 <	6,157,882	6,156,501	6,114,264 L	6,223,681	6,302,012	6,533,511	7,004,400	7,346,562 H
AUTO PARTS/REPAIR	2.4	5,657,130 H	5,583,851	5,480,779	5,309,201	5,247,972	5,201,204 L	5,207,178	5,279,009	5,432,073
HEAVY INDUSTRY	2.1	4,872,249	4,864,073	4,745,475	4,739,490	4,699,284	4,669,817 L	4,710,706	4,982,285	5,262,607 H
HEALTH & GOVERNMENT	1.9	4,373,003	4,126,625	4,090,597	4,011,129	3,821,648 L	3,866,568	4,036,496	4,214,195	4,490,038 H
ELECTRONIC EQUIPMENT	1.6	3,732,547 <	3,733,051 H	3,707,604	3,623,157	3,524,079	3,349,536	3,278,445 L	3,416,225	3,612,764
AUTO SALES - USED	1.4	3,225,715 H	3,115,273	2,979,144	2,896,408	2,821,641	2,728,653	2,638,236	2,602,402 L	2,632,856
RECREATION PRODUCTS	1.3	2,919,341	2,896,637	2,863,876	2,847,342	2,836,245	2,832,322 L	2,857,067	2,897,964	2,985,813 H
BUSINESS SERVICES	1.2	2,858,635 <	2,897,170	2,932,105	2,652,846	2,615,831	2,556,093 L	2,576,202	2,785,402	3,086,313 H
DRUG STORES	1.1	2,594,495 H	2,580,391	2,567,263	2,578,555	2,582,043	2,576,180	2,566,740	2,553,175	2,541,221 L
CHEMICAL PRODUCTS	0.9	1,999,743 L	2,101,333	2,104,542	2,108,271	2,095,413	2,055,137	2,028,528	2,063,774	2,133,164 H
ENERGY SALES	0.8	1,858,543 H	1,714,436	1,599,742	1,479,698	1,380,500	1,279,968	1,156,826	1,129,298 L	1,234,658
LIQUOR STORES	0.6	1,332,012 H	1,327,607	1,316,422	1,310,778	1,307,759 L	1,313,020	1,326,312	1,318,511	1,315,334
MISC. VEHICLE SALES	0.6	1,307,367	1,295,164	1,273,189 L	1,296,244	1,346,703	1,401,697	1,544,431	1,736,843	1,865,901 H
MISCELLANEOUS OTHER	0.5	1,094,558 <	1,102,052	1,092,200	1,083,746	1,059,903 L	1,068,234	1,085,198	1,141,673	1,213,982 H
FLORIST/NURSERY	0.4	990,526 <	992,374	986,848	985,470	982,570 L	989,338	1,003,390	1,022,144	1,049,286 H
FOOD PROCESSING EQP	0.4	921,036	895,474	882,768 L	899,658	896,882	921,005	926,083	931,611	970,538 H
CLOSED ACCT-ADJUSTM	0.0	107,446 L	155,655	175,776	197,273	206,541	170,806	178,933	134,259	288,976 H
TOTALS	100.0	232,551,420 H	229,055,179	225,215,439	222,206,644	220,073,623	217,209,546	216,896,477 L	219,622,228	228,725,548

OCTA

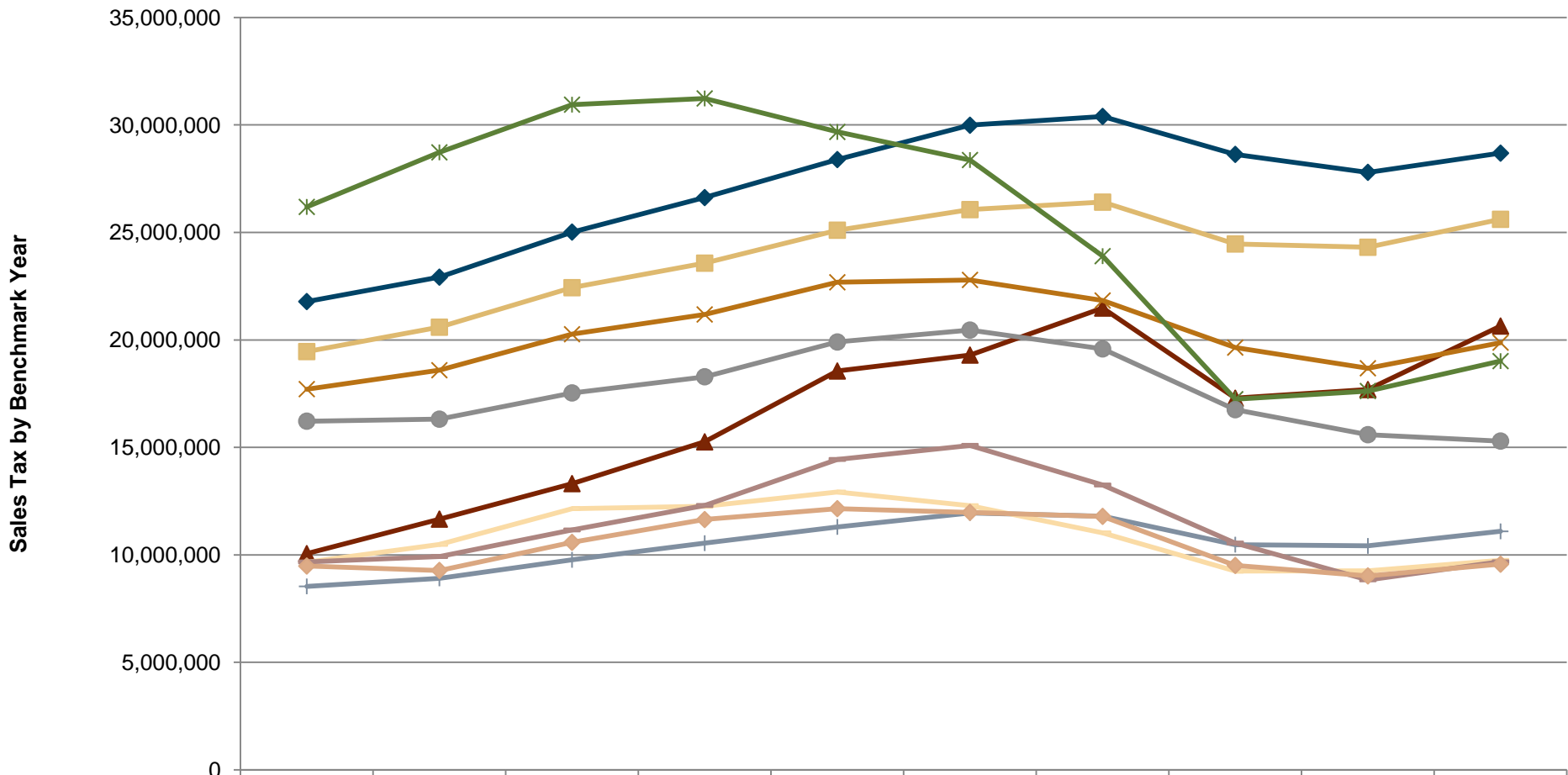
Historical Sales Tax Performance by Benchmark Year



	2002/2	2003/2	2004/2	2005/2	2006/2	2007/2	2008/2	2009/2	2010/2	2011/2
General Retail	61,344,196	63,484,371	69,496,599	73,643,953	78,340,710	80,076,208	78,876,558	70,666,696	68,830,204	72,646,863
Food Products	31,569,832	32,868,314	34,859,787	37,119,801	39,505,061	41,528,965	42,302,928	39,841,249	38,807,274	39,832,037
Transportation	45,780,030	50,166,262	54,463,002	58,011,457	60,546,324	59,883,200	56,844,710	44,460,412	44,727,483	49,847,985
Construction	19,332,623	20,411,436	23,314,071	24,562,212	27,361,342	27,384,954	24,275,676	19,798,840	18,098,296	19,425,617
Business To Business	48,811,723	48,231,081	50,298,343	52,455,739	55,870,594	58,081,718	55,466,302	47,965,355	44,522,275	45,223,905
Miscellaneous	6,604,405	6,569,170	6,583,065	7,101,310	7,220,673	7,196,976	6,911,759	5,992,996	5,088,092	5,575,007

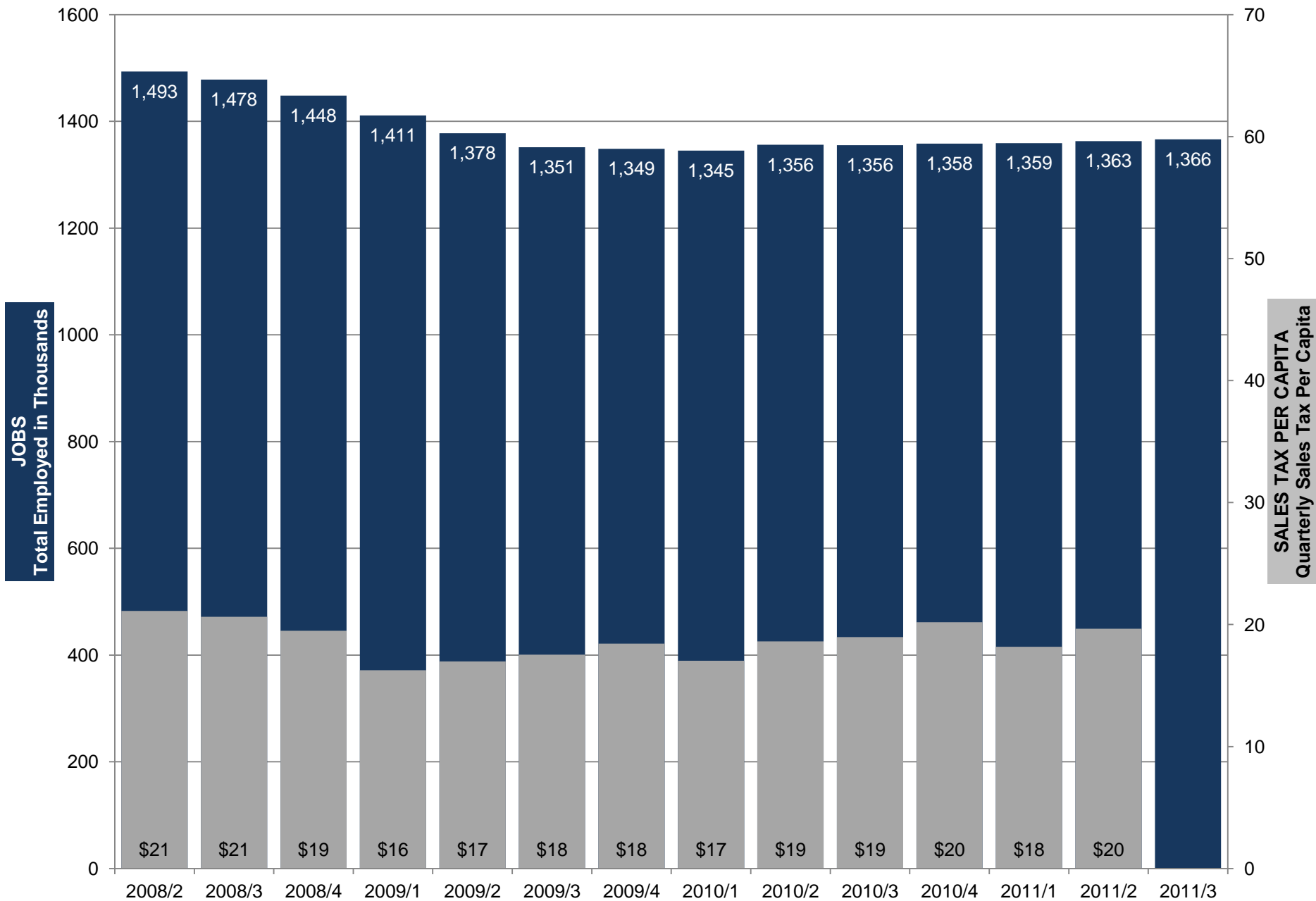
OCTA

Historical Sales Tax Performance by Benchmark Year



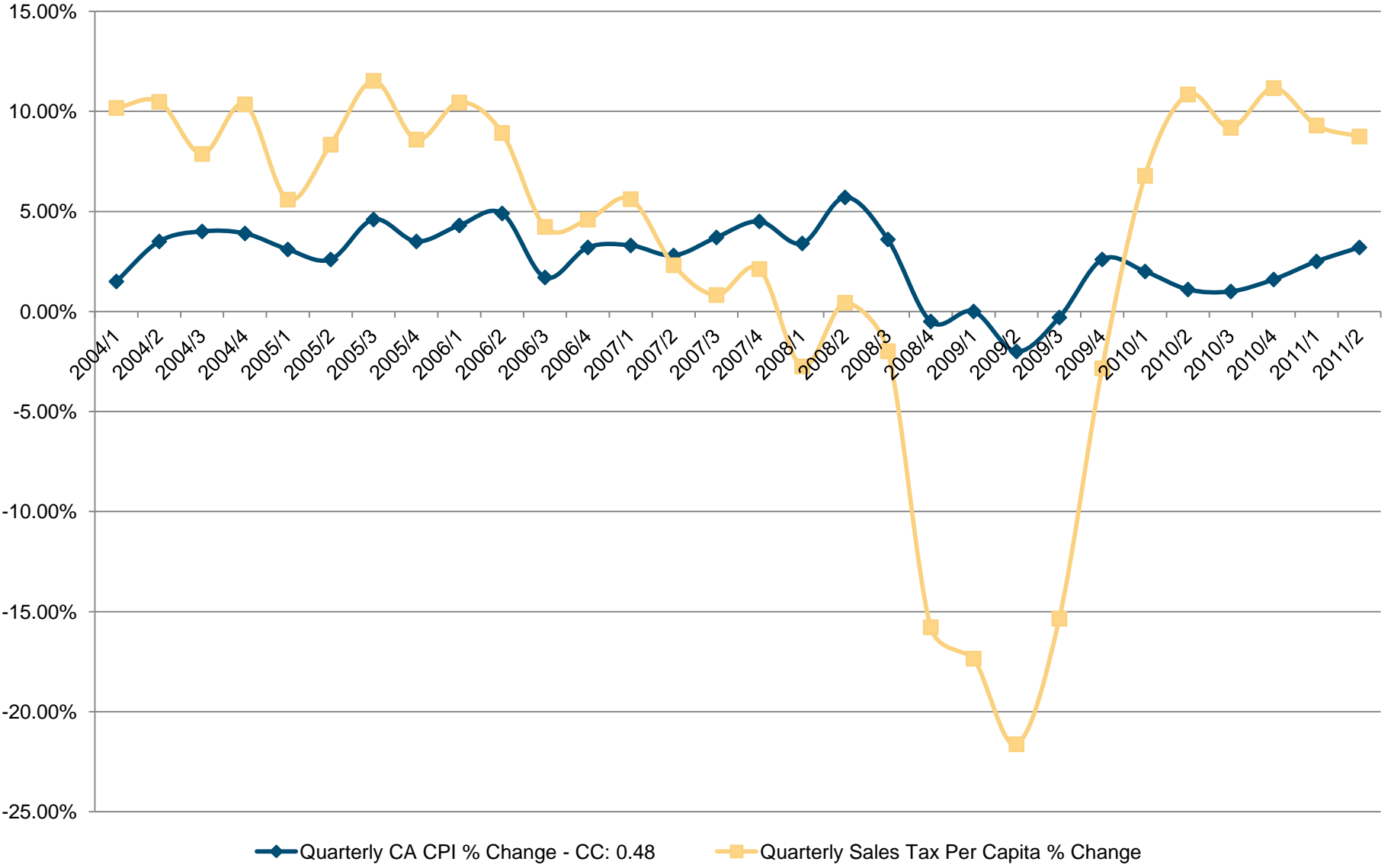
	2002/2	2003/2	2004/2	2005/2	2006/2	2007/2	2008/2	2009/2	2010/2	2011/2
Restaurants	21,783,940.21	22,918,834.38	25,016,131.97	26,620,533.27	28,388,488.10	29,985,037.01	30,395,065.29	28,629,943.98	27,794,388.15	28,687,151.92
Department Stores	19,457,278.24	20,590,369.58	22,428,492.81	23,569,799.96	25,102,096.48	26,060,421.65	26,407,499.60	24,462,151.62	24,309,933.40	25,609,438.29
Service Stations	10,057,605.90	11,665,101.76	13,315,517.90	15,258,871.20	18,553,056.37	19,294,610.06	21,481,515.18	17,287,555.62	17,689,981.90	20,644,517.58
Miscellaneous Retail	17,710,763.80	18,590,157.99	20,263,561.33	21,182,599.54	22,680,069.72	22,789,192.72	21,832,228.14	19,641,782.72	18,680,685.73	19,872,349.66
Auto Sales - New	26,185,440.41	28,721,962.57	30,942,450.21	31,230,877.49	29,673,218.29	28,366,683.65	23,896,324.15	17,242,025.38	17,621,183.09	19,013,256.39
Light Industry	16,219,606.98	16,313,410.78	17,533,835.31	18,285,511.63	19,903,110.91	20,456,015.25	19,582,947.94	16,753,905.41	15,590,904.46	15,294,902.38
Apparel Stores	8,534,779.21	8,906,592.30	9,768,672.18	10,543,941.54	11,301,840.99	11,950,682.97	11,794,376.09	10,476,594.98	10,417,035.93	11,094,381.22
Bldg. Matls - Retail	9,659,978.96	10,489,136.08	12,153,728.15	12,261,633.01	12,922,032.34	12,288,918.97	11,024,984.69	9,246,212.41	9,258,777.55	9,745,391.91
Bldg. Matls - Whsle	9,672,644.45	9,922,300.32	11,160,342.72	12,300,579.04	14,439,309.66	15,096,035.46	13,250,691.35	10,552,627.78	8,839,518.86	9,680,225.30
Furniture/Appliance	9,481,140.45	9,277,573.23	10,582,640.75	11,643,800.06	12,149,306.91	11,977,440.62	11,790,878.16	9,509,846.99	9,021,690.87	9,566,330.07

OCTA Sales Tax Per Capita Versus Orange County Total Employed



OCTA

California CPI vs. OCTA Sales Tax Per Capita % Change from Prior Quarter



Taxable Sales

