



**Sunday, June 2 - Saturday, June 8, 2013**

## Construction Overview

### ORTEGA BRIDGE LANE REDUCTION

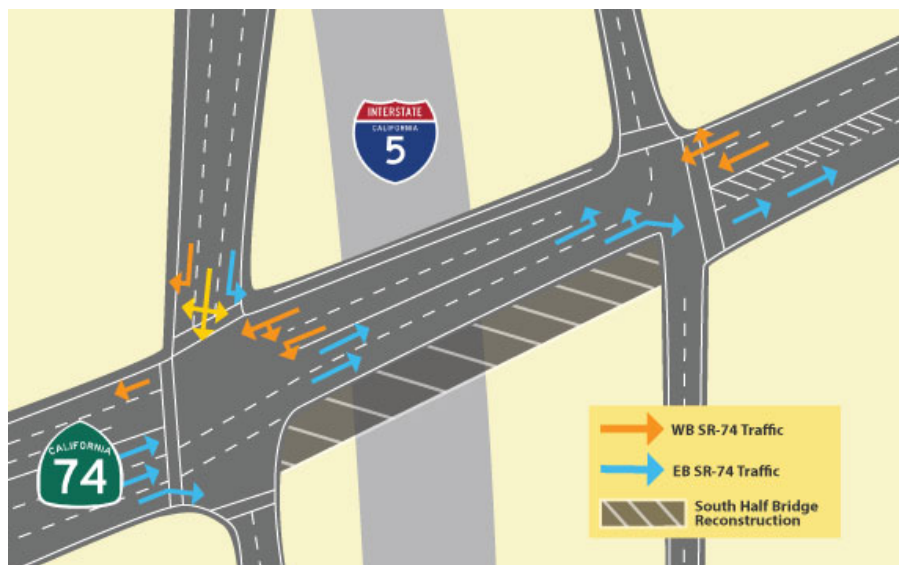
**Saturday, June 1 - 10 p.m.**

- This Saturday, June 1 at 10 p.m., crews will reduce lanes on the Ortega Highway bridge over the I-5 freeway to two lanes in either direction in preparation for upcoming demolition activities on the south half of the bridge.

This configuration will last for approximately one year as crews work to demolish and reconstruct the south half of the bridge. [Please click here for more information.](#)

*\*During this configuration, large trucks and trailers more than 40-feet long will be unable to exit the I-5 southbound off-ramp and maneuver a left turn to eastbound Ortega Highway and will have to utilize alternate routes. [Please click here to view alternate routes for trucks more than 40-feet long.](#)*

Please see below for the configuration during the lane reduction:



- Crews will open the pedestrian walkway on the north half of the Ortega Highway bridge the morning of Sunday, June 2. This walkway was constructed in preparation for the upcoming south half bridge demolition activities. During the south half bridge reconstruction, there will be no pedestrian access on the south side of the bridge. Pedestrians will be directed to utilize the walkway on the north side of the bridge.

## **Scheduled Closures & Detours**

**Scheduled nighttime closure(s) from Sunday, June 2 through Saturday, June 8 include:**

### **Lane Reductions:**

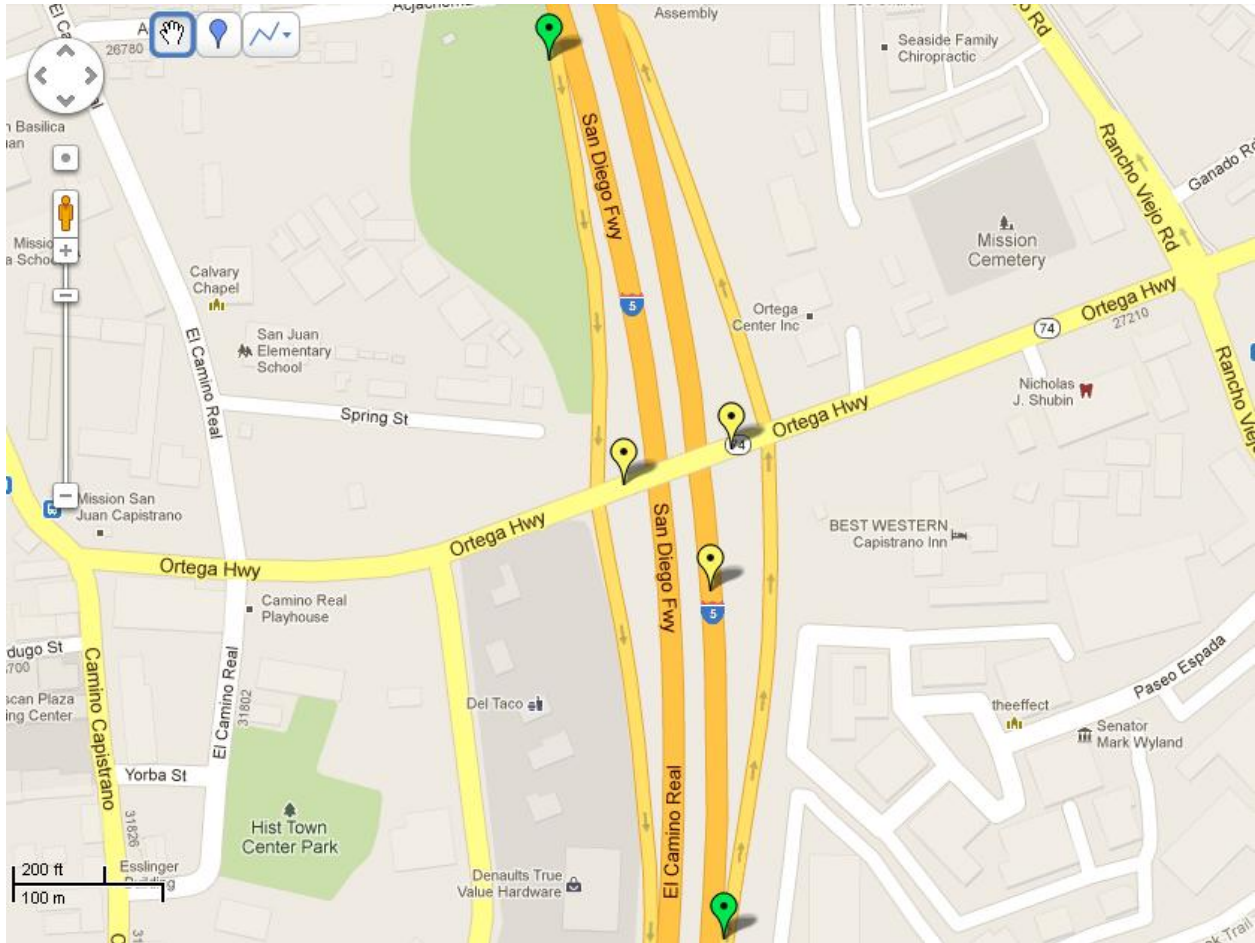
- **Lane reduction on eastbound Ortega Highway (SR-74) between Del Obispo Street and Rancho Viejo Road**
  - Lane closures nightly Sunday, 6/2 through Wednesday, 6/5 between 10 p.m. and 6 a.m.
- **Lane reduction on westbound Ortega Highway (SR-74) between Rancho Viejo Road and Del Obispo Street**
  - Lane closures nightly Sunday, 6/2 through Wednesday, 6/5 between 10 p.m. and 6 a.m.

### **Ramp Closures:**

- **I-5 Southbound off-ramp to Ortega Highway (SR-74) Closed**
  - Ramp closed Sunday, 6/2 between 11 p.m. and 5 a.m.\*
- **I-5 Northbound off-ramp to Ortega Highway (SR-74) Closed**
  - Ramp closed Sunday, 6/2 between 11 p.m. and 5 a.m.\*

*\*Lane closures on off-ramps will begin at 10 p.m. before full closure.*

Click on the map below to see the full schedule of nightly closures and detours planned on the I-5 / Ortega Highway Interchange Improvement Project from Sunday, June 2 through Saturday, June 8, 2013.



[View Map](#)

**Map Legend:**

- Red - Full Freeway Closure
- Yellow - Freeway Lane Reduction
- Green - Ramp Closure

**DISCLAIMER:** Please be advised, these dates and times are subject to change due to unforeseen operational factors or inclement weather.