

# A Gateway to the Future

The Anaheim Regional Transportation Intermodal Center



Conceptual renderings  
subject to change

OCTA  
Special Needs Committee Presentation  
Tuesday, April 27, 2010



# Project Presenter

## Jamie Lai, P.E.

---

- Transit Manager, City of Anaheim
- The ARTIC Project Manager

# The ARTIC Project Vision

## The ARTIC Project Vision...

- ARTIC will be a world class transportation center where people transfer between travel services to reach both regional and interregional activity centers and business districts.

# Genesis of the ARTIC Project

## ■ Need for the ARTIC Project

- Significant population increase
- 10<sup>th</sup> largest city in California
- Sports and entertainment venues generate additional traffic
- Anaheim attracts over 18 million annual tourists and visitors per year



> Metrolink Anaheim Train Station

# Genesis of the ARTIC Project

## ■ Need for the ARTIC Project (continued)

- Continued demand for Metrolink and Amtrak
- Anaheim is centrally located
- Anaheim is the southern terminus for the first phase of California High-Speed Rail
- Originally contemplated as a Private-Public Partnership (P3) development



> CA High-Speed Train

# Inspirations

## An American Train Station for the 21st Century

 Visionary, Modern, Rooted in our Traditions....



# Conceptual Design

## A Soaring Open Space

- World Class Transportation Hub - *functional, adaptable, and flexible*
- An Iconic Design - *skyline, presence, and visibility*
- Vibrant Urban Center - *pedestrian, sustainable, civic, and public*



# The ARTIC Project Interior

## Progressive Design

-  Light-filled
-  Timeless
-  Energy efficient
-  LEED Platinum Goal





# Site Development

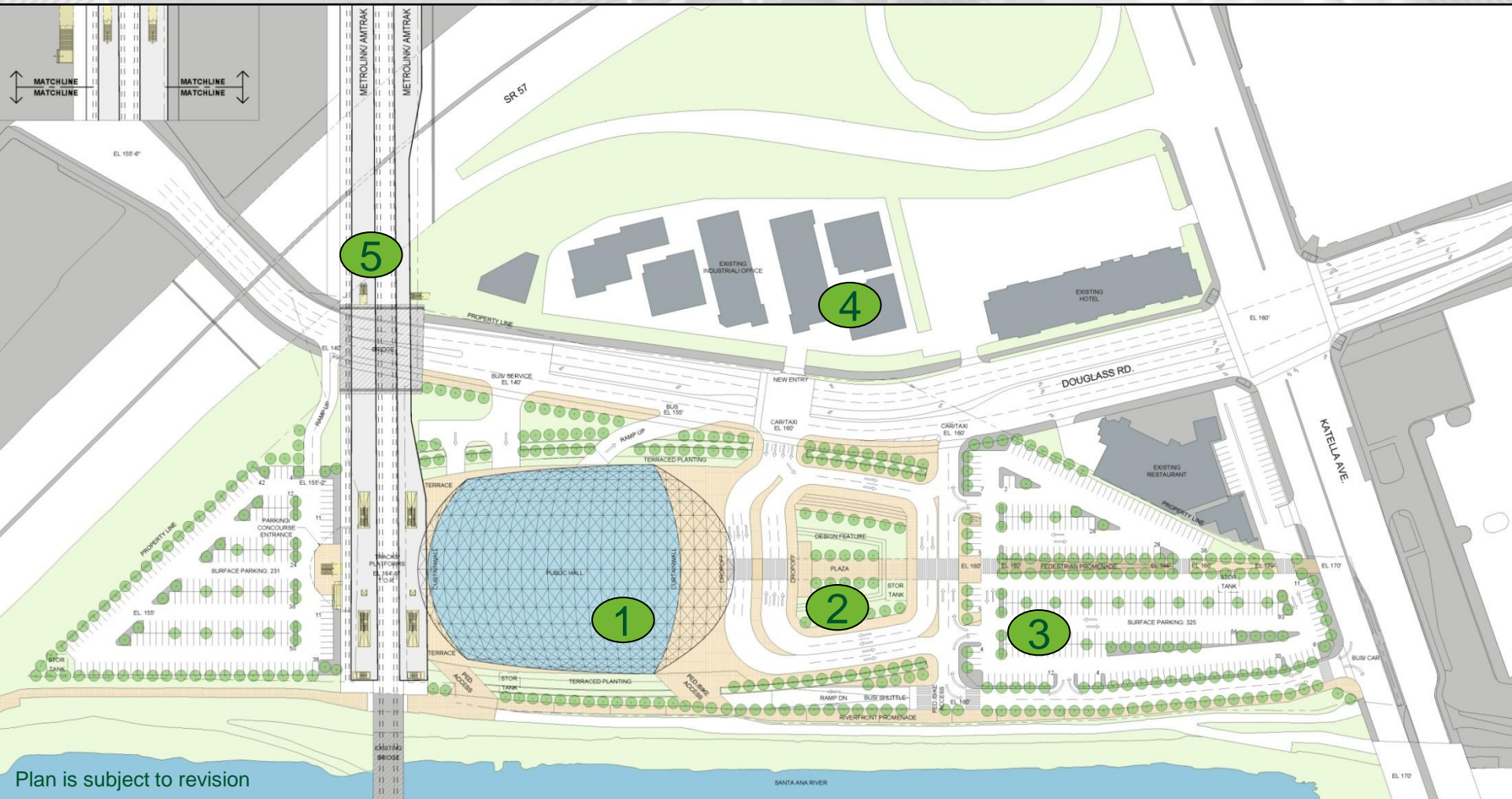
## ■ Approximately 16 Acre Site

- Transit center and supportive facilities
- Bus / shuttle / taxi / kiss and ride
- Trackwork and platforms
  - Including pedestrian access
- Parking
- Public art
- Access and street improvements
  - New railroad bridge with widening
  - Lowering of Douglass Road



# Conceptual Site Layout

1. Intermodal Center
2. Plaza
3. Surface Parking/Future Development
4. Existing Uses (separate land owner)
5. Rail Platforms

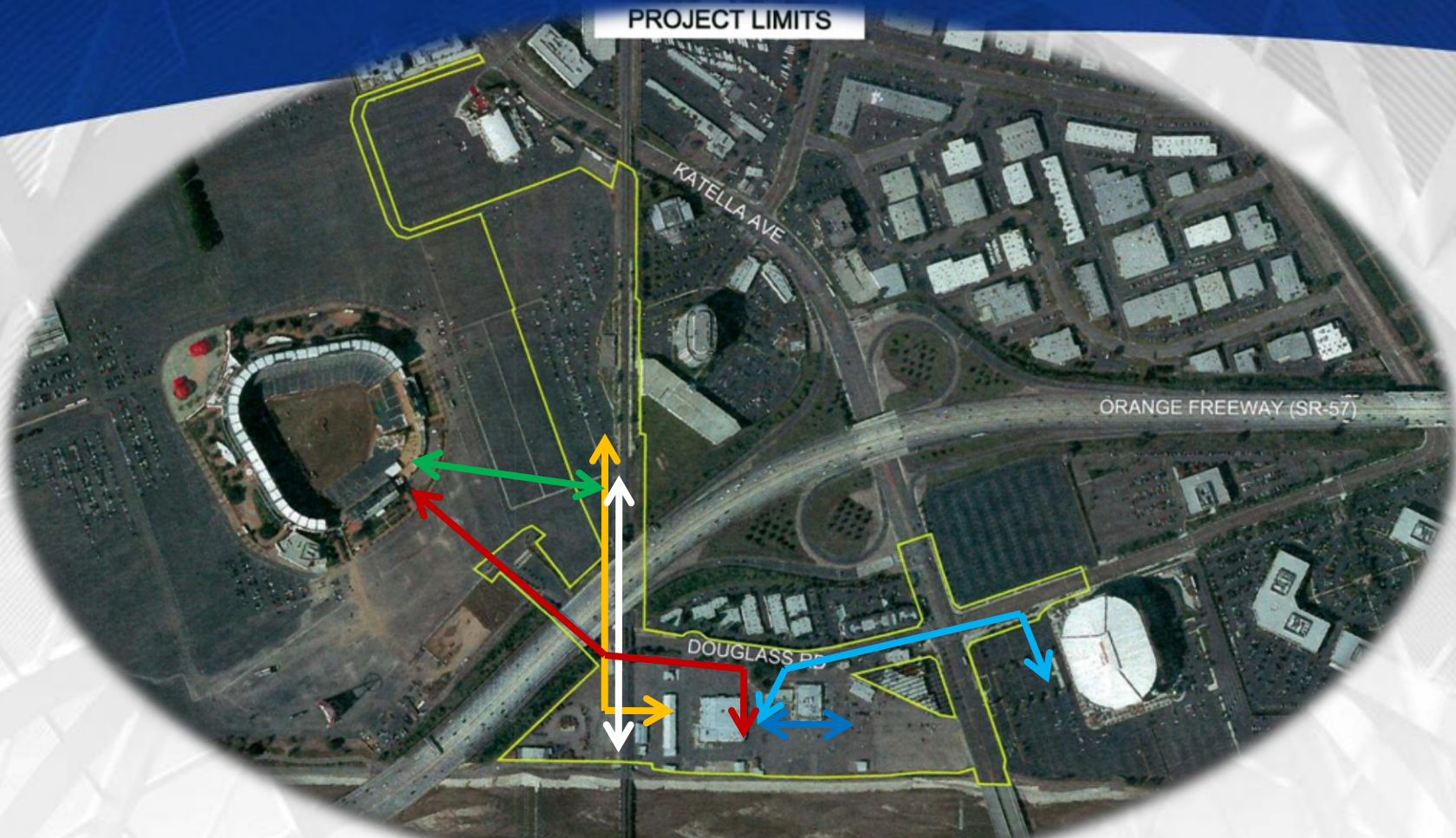


Plan is subject to revision

# Topics of Interest

- **Code Compliance** —————> Address accessibility concerns.
- **Paratransit Service** —————> Consider drop-off and pick-up locations dependent on OCTA programs and services
- **Patron Conveniences** —————> Address patron conveniences relative to distance, current code, appropriate way finding, and similar needs.
- **Way Finding (Signage)** —————> Provide concise and effective direction.
- **Fire Life Safety** —————> Address safety and security concerns for ARTIC.
- **Transit Services** —————> Support OCTA bus services to provide direct connections to Amtrak/Metrolink and the future High Speed Train.

# Approximate Distances



- |  |  |            |
|--|--|------------|
| A. Between Angels Stadium and front of ARTIC             |  | 1,975 feet |
| B. Between Anaheim Station Parking Lot and back of ARTIC |  | 1,360 feet |
| C. Between Honda Center and front of ARTIC               |  | 1,790 feet |
| D. Between north parking lot and front of ARTIC          |  | 460 feet   |
| E. Between the Pavilion and Angel Stadium                |  | 690 feet   |
| F. Approximate platform length                           |  | 1,150 feet |

# Funding

## ■ Significant Local Funding Commitment

<b>Funding Source</b>	<b>Amount (in millions)</b>
<b>Renewed Measure M – Project T Bond Proceeds</b>	<b>\$ 99.2</b>
<b>Measure M – Transit Revenue</b>	<b>\$ 44.6</b>
<b>2008 State Transportation Improvement Program</b>	<b>\$ 29.2</b>
<b>Federal Earmark</b>	<b>\$ 3.2</b>
<b>Federal Transit Administration</b>	<b>\$ 2.6</b>
<b>Total</b>	<b>\$178.8</b>

# Recent Activity and Upcoming Milestones

## Major Project Milestones

- Environmental Clearance Begins..... April 2009
- City of Anaheim Retained Architecture and Engineering Consultant (A&E) and Program Management Consultant (PMC)
  - (Parsons Brinckerhoff/HOK, Architecture & Final Design).....Spring/Summer 2009
- Environmental Clearance.....Late 2010
- Architecture & Engineering Complete..... 2011
- General Contractor Procurement and Construction Start..... 2011
- Construction Complete – Station Operational.....2013

# Regionally Located



# Regional Connectivity





# ARTIC Transportation Services

## ■ Transportation Services

- Metrolink
- Amtrak
- OCTA Bus
- OCTA Bravo BRT
- Anaheim Resort Transit
- LAWA Flyaway Shuttles
- Taxi Services
- Intercity Buses
- International Buses
- Tour and Charter Buses
- Private Vehicles/Parking



# ARTIC Transportation Services

## Future Transportation Service

### Anaheim Rapid Connection (ARC)



# Southern Terminus for HSR

## ■ Anaheim to Los Angeles Section

- High-Speed Rail Station at ARTIC
- In Draft Alternatives Analysis Phase of environmental review
- EIR Record of Decision – Summer 2011
- Selected alignment can accommodate up to five trains per hour
- Anaheim to Los Angeles in 20 minutes
- Anaheim to San Francisco in under 3 hours
- Operational by 2018
- Section is eligible to share in the \$2.25 billion ARRA funding

# ARTIC Transportation Services

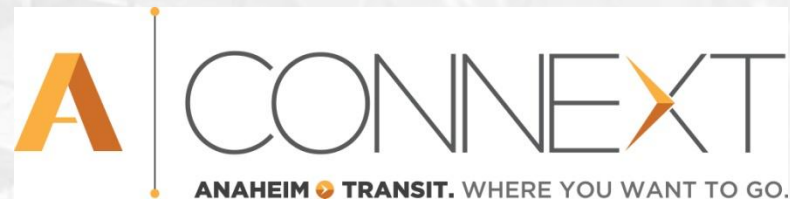
## Other Future Transportation Services

- Cal/Nev Super Speed Train
- Future OCTA Bus Service
- Additional Shuttle Services



## AConnex

- New website debuting summer 2010
- Complete transportation information and services
- Ability to get transportation schedules, buy tickets, get system-wide information and updates about ARC, high-speed rail and ARTIC



# Platinum Triangle

## Dynamic, mixed-use development area

-  Master Land Use Plan and Mixed-Use Overlay Zone
-  The Platinum Triangle will provide for over 10,000 residential units, 2,250,000 square feet of commercial space and 5,000,000 square feet of office space
-  Flexible zoning regulations

# Platinum Triangle Development

## Mixed-use Developments Underway

- Anaheim encourages transit-oriented housing and supporting commercial and retail developments within Platinum Triangle; opportunity for office and commercial development under P3 model



# Future Visioning Opportunities

## ■ Future Visioning Opportunities Around the ARTIC Project

- Infill development over surface parking
- Development energizes Douglass Road and Katella Avenue frontages
- Encourage TOD and mixed-use
- Market driven
- Active center with consideration of 18 to 24-hour operations




# Project Questions

## For Project Questions

-  [www.articinfo.com](http://www.articinfo.com)
-  [info@ARTICinfo.com](mailto:info@ARTICinfo.com)
-  1(877) 99-ARTIC

## For Other Projects

-  [www.anaheimfixedguideway.com](http://www.anaheimfixedguideway.com)
-  [www.cahighspeedrail.ca.gov](http://www.cahighspeedrail.ca.gov)
-  [www.canv-maglev.com](http://www.canv-maglev.com)

## AConnex

-  [www.aconnex.com](http://www.aconnex.com)