

Orange County Rail Programs



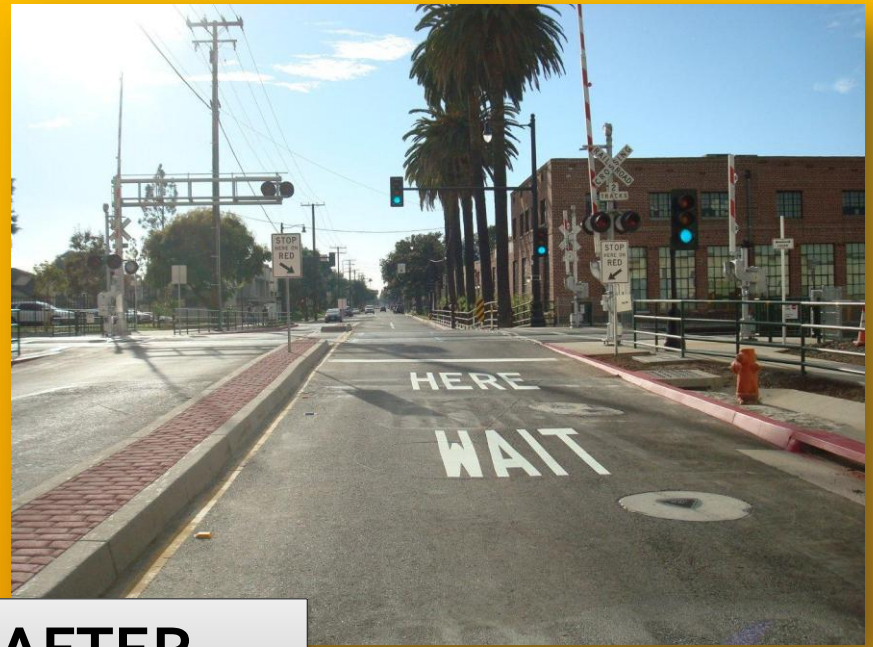
Jennifer Bergener, OCTA Capital Programs
April 18, 2012



Railroad Crossing Safety Enhancement Program

- \$85 million project cost
 - 88 percent funded by OCTA
 - 12 percent funded by cities
- 52 crossings
- 8 cities
- Largest safety crossing corridor program in United States
- Support city efforts to establish quiet zones





BEFORE & AFTER
at Palm Avenue Crossing





New vehicle exit gates deter motorists from crossing the tracks when a train is approaching





Extended medians deter drivers from driving around lowered gates

New swing gates, gate arms and hand rails deter pedestrians from trespassing and crossing tracks illegally



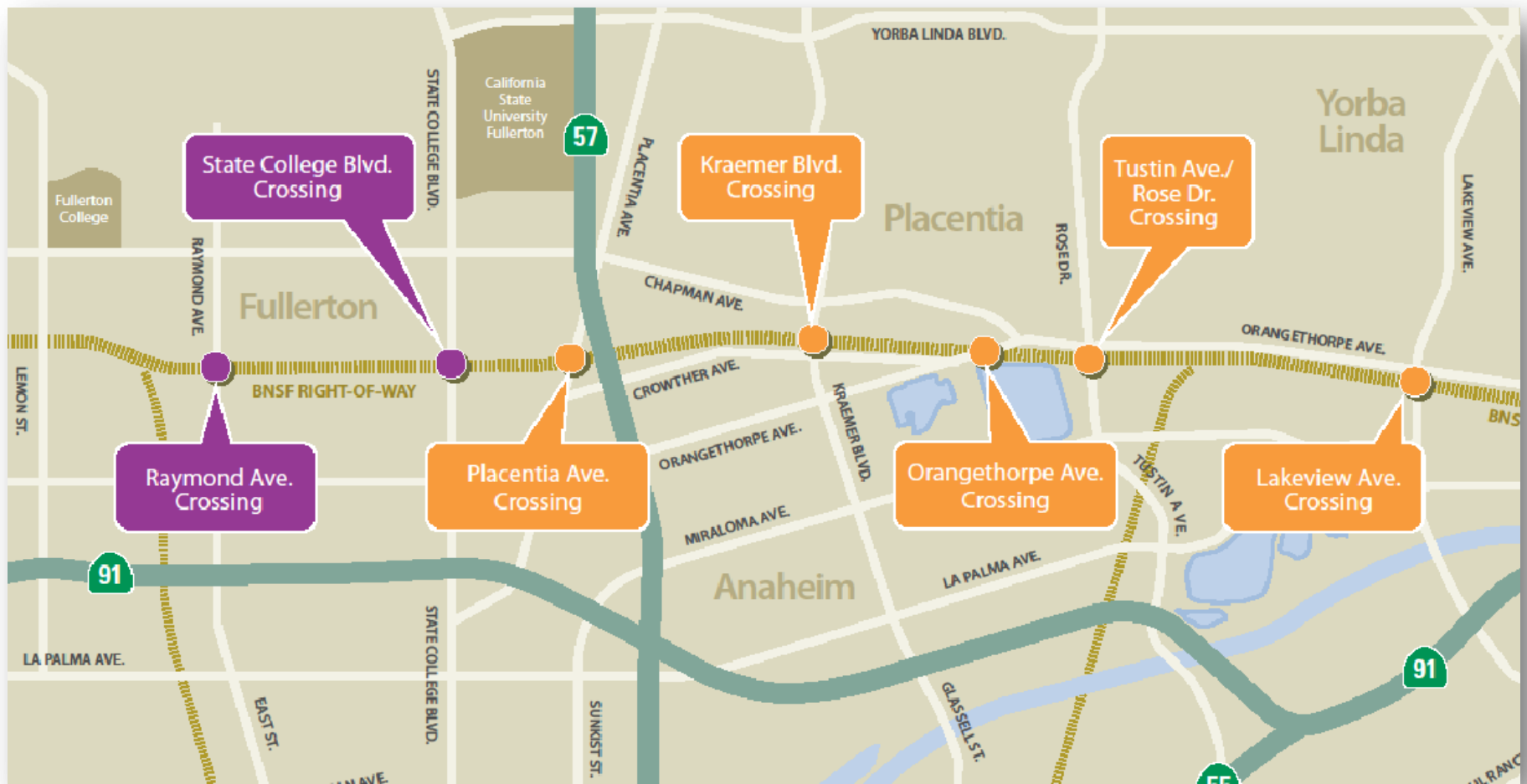
New warning devices & signs warn of approaching train tracks

Quiet Zones

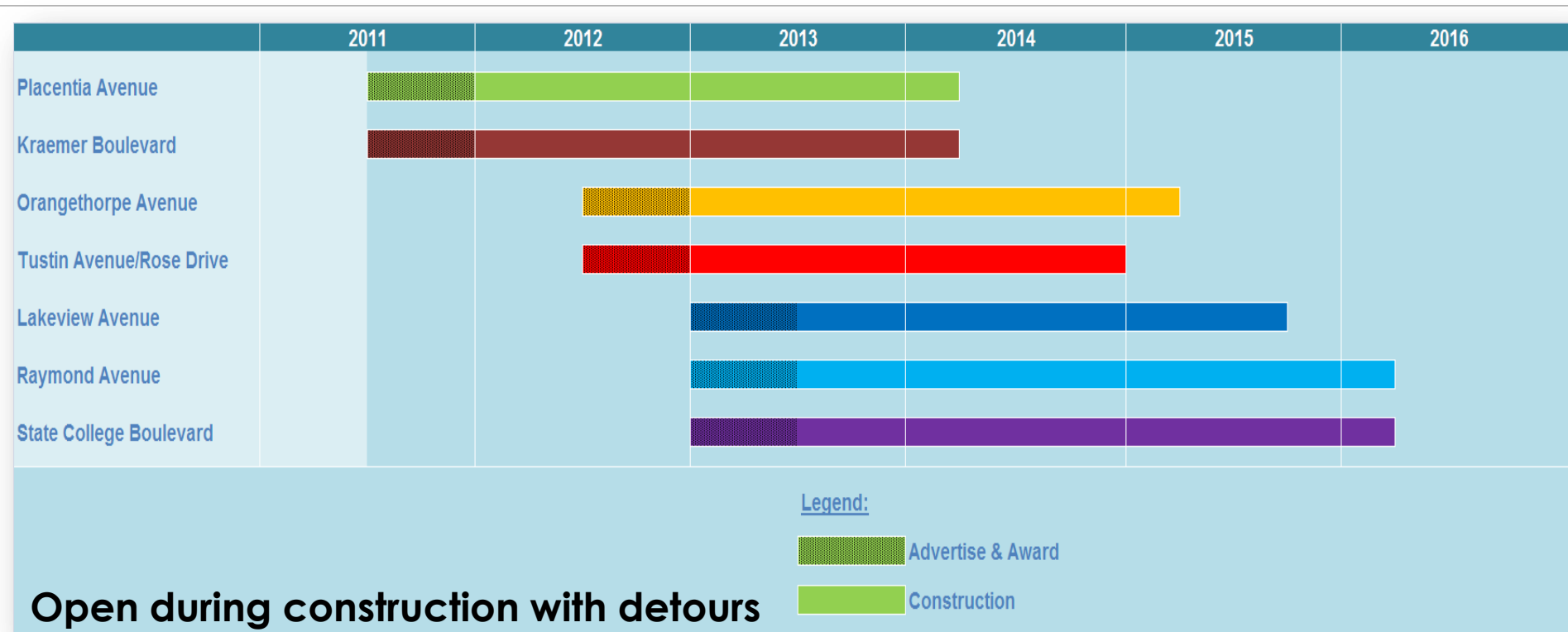
- City files Notice of Establishment
- Quiet zone implemented 21 days later
- Single largest safety quiet zone in the nation
 - 6 cities
 - 34 crossings



O.C. Bridges



Construction Schedule



- Placentia Avenue
- Orangethorpe Avenue
- Tustin Avenue/Rose Drive
- Raymond Avenue

Placentia Avenue

- Construct detour road
- Construct railroad detour
- Shift rail & vehicle traffic
- Shoring & excavation
- Begin retaining wall construction



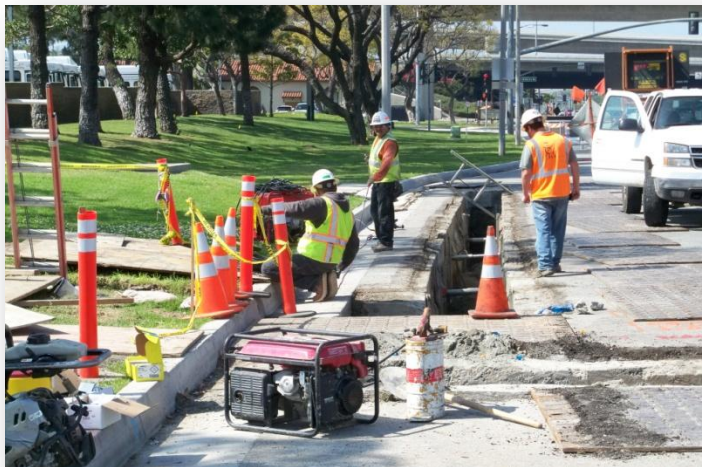
Kraemer Boulevard

- Close to traffic
- Clearing & grubbing
- Construct railroad detour
- Prepare for storm drain installation
- Shoring & excavation

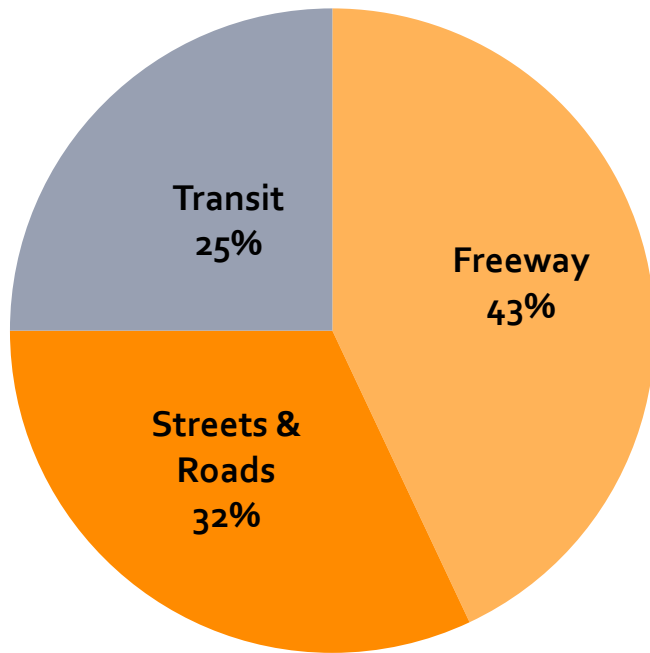


LOSSAN - Sand Canyon Boulevard

- Construct MOW for SCRRA
- Utility relocation
- Preparation & construction of shoofly
- Closure of bike train & traffic staging

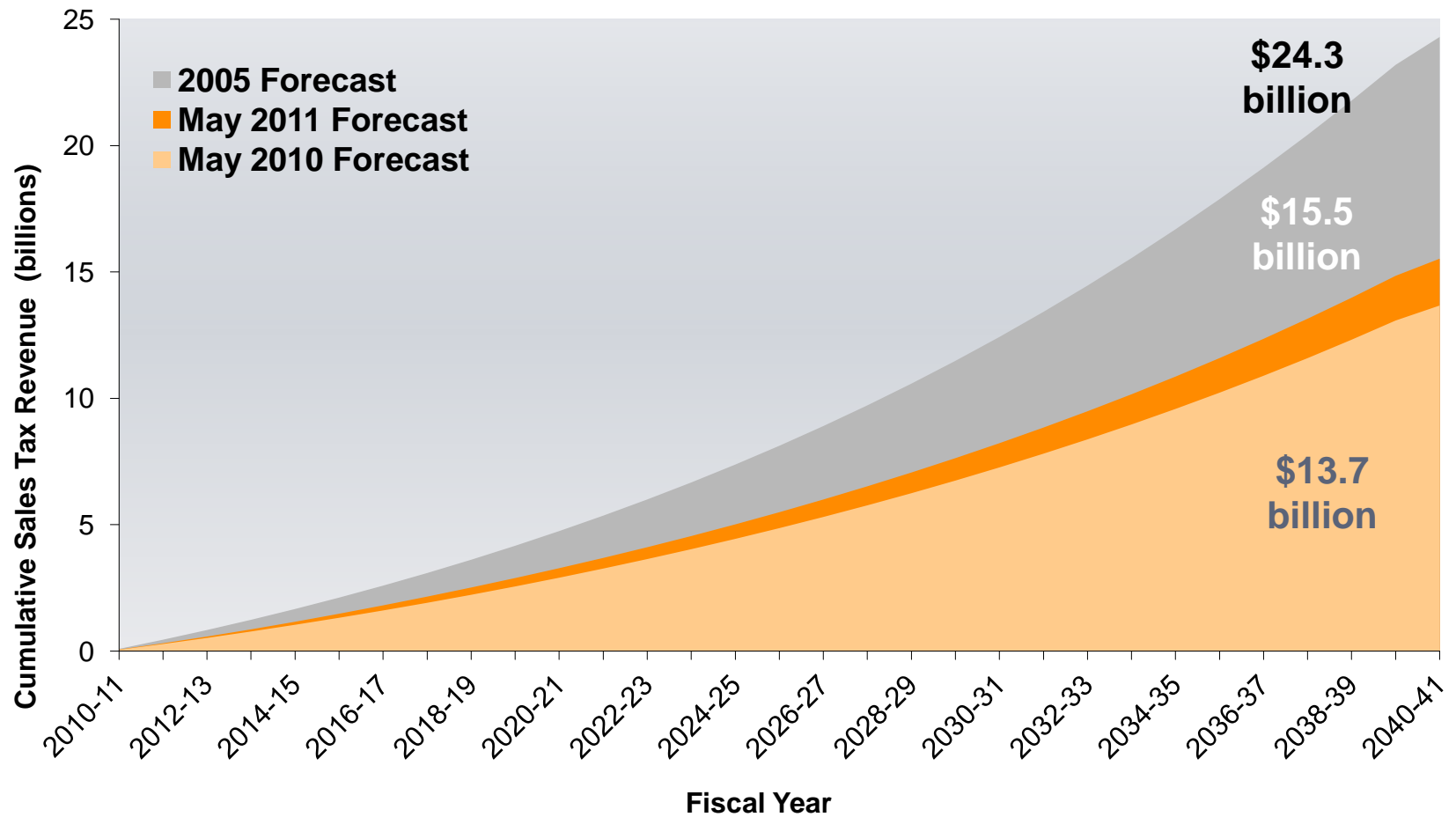


M2 – Passed by Nearly 70%



MEASURE M M2 Projects and Programs		
Freeway Projects		
I-5	Santa Ana Freeway Interchange Improvements	A
I-5	Santa Ana/San Diego Freeway Improvements	B C D
SR-22	Garden Grove Freeway Access Improvements	E
SR-55	Costa Mesa Freeway Improvements	F
SR-57	Orange Freeway Improvements	G
SR-91	Riverside Freeway Improvements	H I J
I-405	San Diego Freeway Improvements	K L
I-605	Freeway Access Improvements	M
All	Freeway Service Patrol	N
Streets & Roads Projects		
	Regional Capacity Program	O
	Regional Traffic Signal Synchronization Program	P
	Local Fair Share Program	Q
Transit Projects		
	High Frequency Metrolink Service	R
	Transit Extensions to Metrolink	S
	Metrolink Gateways	T
	Expand Mobility Choices for Seniors and Persons with Disabilities	U
	Community Based Transit/Circulators	V
	Safe Transit Stops	W
Environmental Cleanup		
	Clean Up Highway and Street Runoff that Pollutes Beaches	X
Taxpayer Safeguards and Audits		
	Collect Sales Taxes (State charges required by law)	
	Oversight and Annual Audits	

Sales Tax Forecast





Transit – 25 %

- Project R – Metrolink Expansion
- Project S – Extensions to Metrolink
- Project T – Metrolink Gateways
- Project U – Mobility of Seniors/Persons with Disabilities
- Project V – Community Transit
- Project W – Safe Stops

Early Action Plan Guiding Principles

- Project readiness
- Congestion relief/demand
- External funding
- Public opinion/support
- Project sequencing/connectivity
- Project duration cycle

EAP Status – Transit Extensions

Expand Metrolink	Added 6 trains Improved stations
Improve rail crossings, make safety enhancements	
Award \$200M competitive funds – Projects R, S, T	\$123M awarded \$42M leveraged
Develop guidelines for programs for seniors and persons with disabilities	

M2020 Transit – Meets Commitments

- Continued operations and expansion of Metrolink based on demand
- Funds available for
 - Rubber-tire extensions to Metrolink
 - Fixed-guideway projects
 - Regional gateways program
 - Transit for seniors and person with disabilities
 - Community based circulators
 - Safe bus stops

Anaheim Rapid Connection



Santa Ana / Garden Grove Fixed Guideway



For More Information

Jennifer Bergener

OCTA Capital Programs

714.560.5462

jbergener@octa.net

www.octa.net/railroadcrossing

www.oocbridges.com

www.octa.net/m2020