

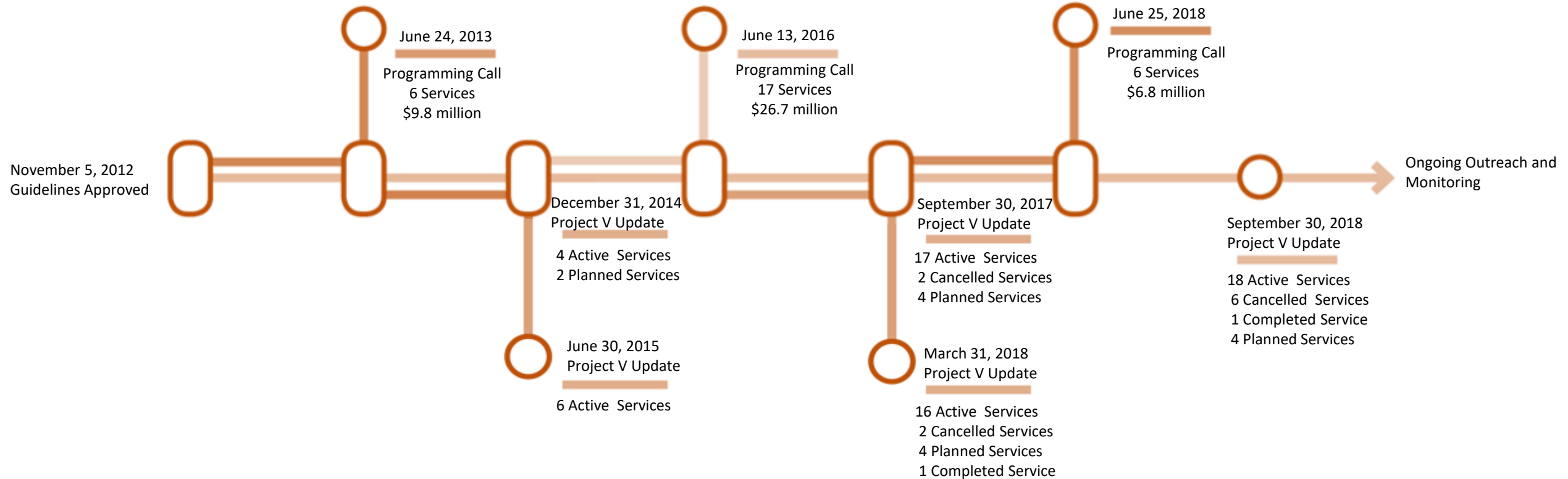


# *Measure M2 Community-Based Transit Circulators Program Project V Ridership Report*

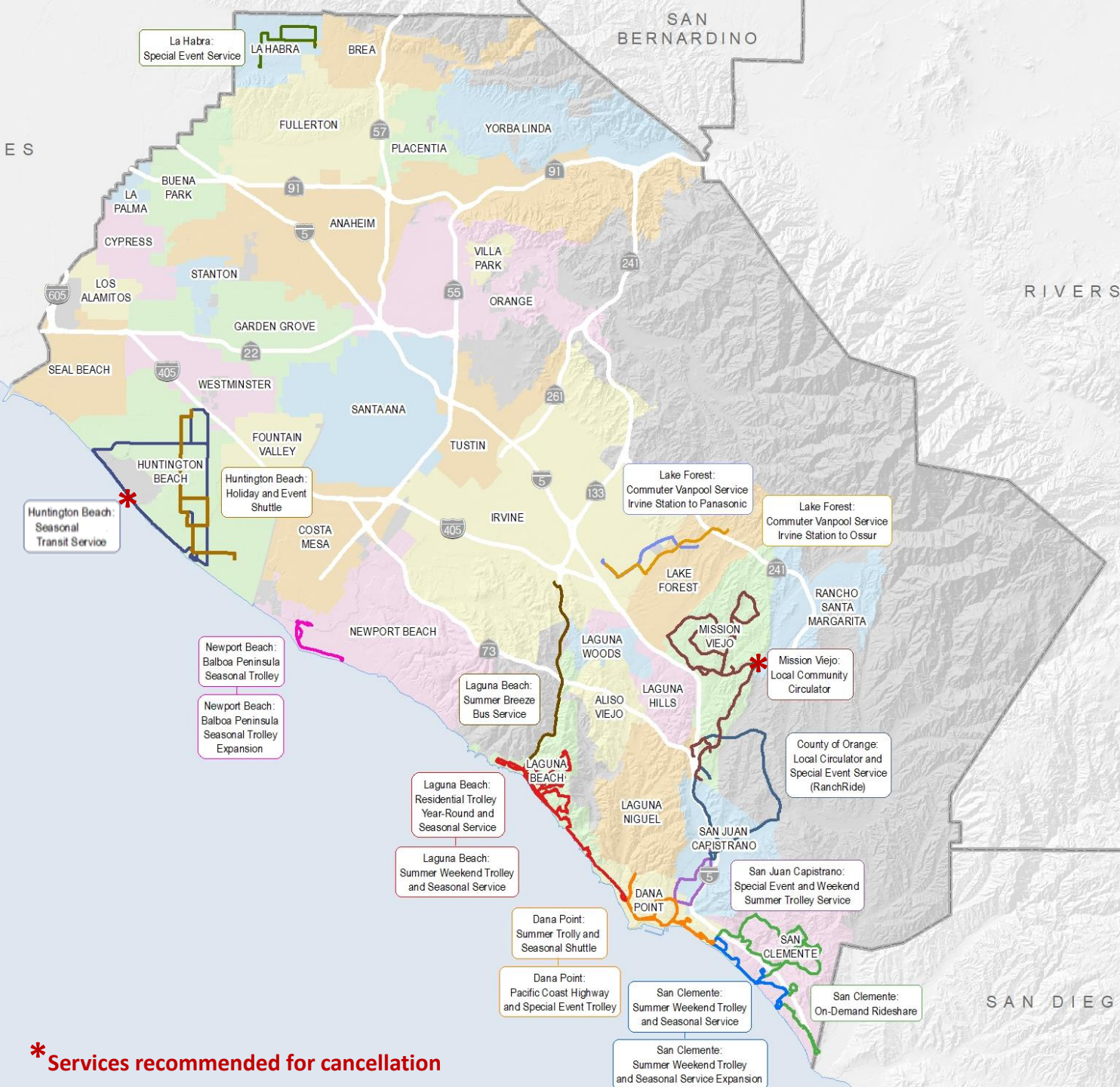
# Overview



# Background



Call – Call for Projects



\* Services recommended for cancellation

# Regional Overview

Active Services through  
September 2018

# Performance Criteria and Monitoring

## ❖ Key performance indicators:

Year 1	Year 2	Year 3+
Meet or exceed 6 B/RVH by end of Year 1 <sup>1</sup>	Meet or exceed 10 B/RVH by end of Year 2	Maintain 10 B/RVH each reporting period

<sup>1</sup> One Year from the first day of operations

- Under-performing projects subject to cancellation

## ❖ Reporting Requirements:

- Ridership Reports – Quarterly
- Updates provided to Transit Committee and OCTA Board – Semi-annually

B/RVH – Boardings per revenue vehicle hour  
OCTA – Orange County Transportation Authority  
Board – Board of Directors



## Services meeting or exceeding the minimum established performance standard:

- County of Orange - Local Circulator & Special Event Service
- Dana Point - Summer Trolley & Seasonal Shuttle
- Dana Point - Pacific Coast Highway & Special Event Trolley
- Huntington Beach - Holiday & Event Shuttle
- Laguna Beach - Summer Weekend Trolley & Seasonal Service
- Laguna Beach - Summer Breeze Bus Service
- Lake Forest - Commuter Vanpool Irvine Station & Ossur
- Lake Forest - Commuter Shuttle Irvine Station & Panasonic
- Newport Beach - Balboa Peninsula Seasonal Trolley
- Newport Beach - Balboa Peninsula Seasonal Trolley Expansion
- San Clemente - Summer Weekend Trolley & Seasonal Service
- San Clemente - Summer Weekday Trolley & Seasonal Service Expansion
- San Juan Capistrano - Special Event & Weekend Summer Trolley Service

## Services trending below the minimum established performance standard:

- La Habra - Special Event Service
- Laguna Beach - Residential Trolley Year-Round and Seasonal Service
- San Clemente - On-Demand Services

## Services below the minimum established performance standard:

- Huntington Beach - Seasonal Local Transit Service
- Mission Viejo - Local Community Circulator

# Next Steps

- Total Cumulative Boardings 1.82 million



- Continue to work with local agencies and monitor service performance.
- Return to the Transit Committee and the Board with next ridership update in:

