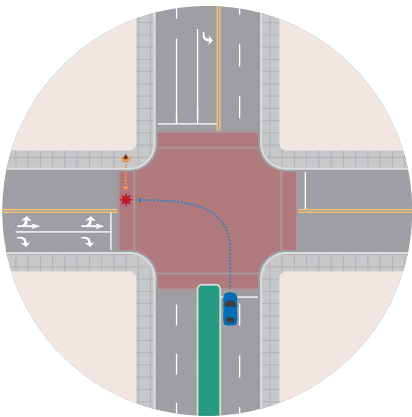


# Top 15 Crash Typologies

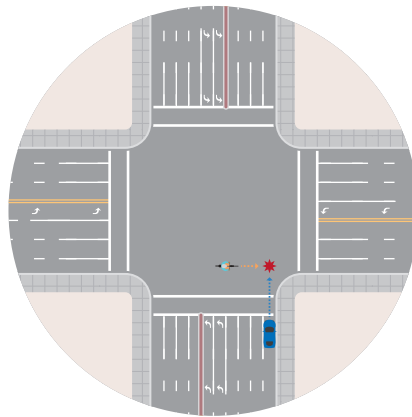
The OCTA Systemic Safety Plan identifies 15 priority crash typologies based on key patterns found in the analysis of countywide bicycle and pedestrian crash data. The typologies highlight some of the most common behaviors, roadway characteristics, land uses, and other contextual factors associated with severe crashes throughout Orange County. Bicycle and pedestrian icons (🚶 🚲) identify the predominant mode(s) associated with each typology.



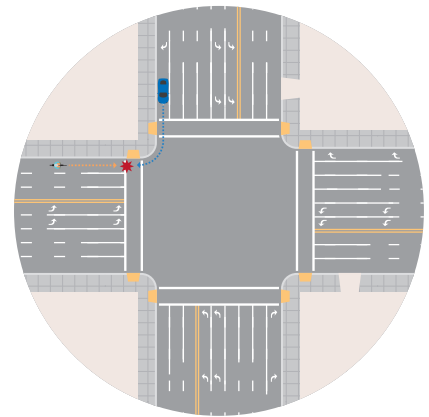
SYSTEMIC  
SAFETY  
PLAN



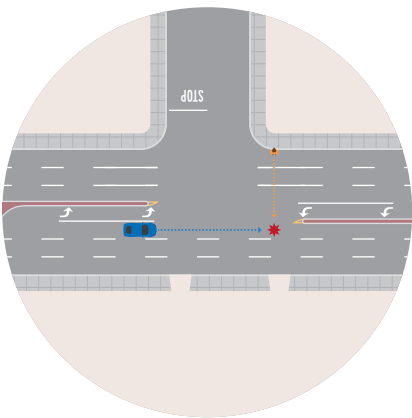
**TYPOLGY 1**  
**Commercial Corridor**



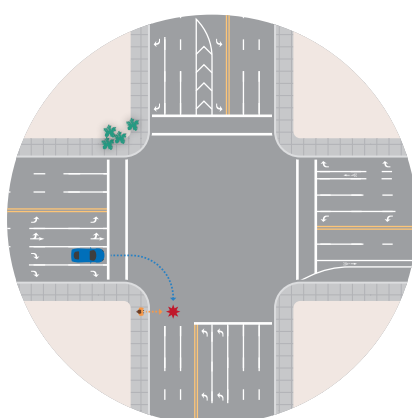
**TYPOLGY 2**  
**Signalized Intersections,  
Angle Crashes**



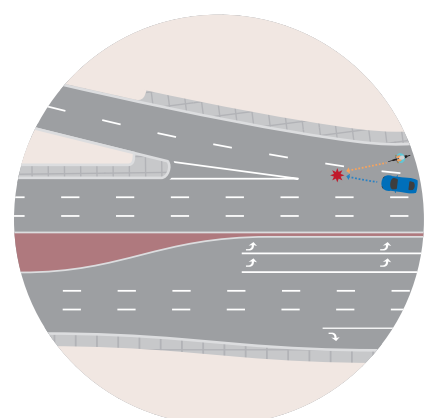
**TYPOLGY 3**  
**Contra-Flow Bicycle  
Riding**



**TYPOLGY 4**  
**Crossing at Unsignalized  
Intersection**

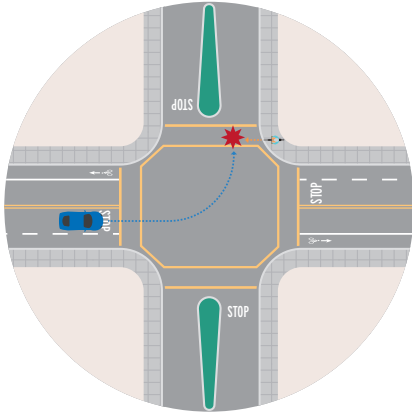


**TYPOLGY 5**  
**Dual Right Turn/High  
Right Turn Volume**

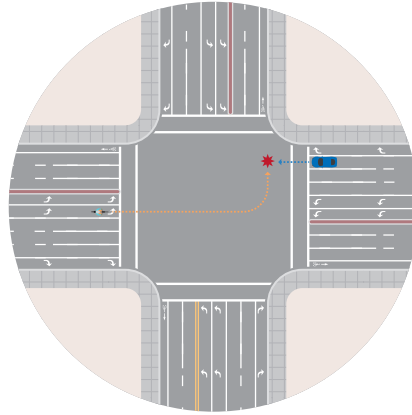


**TYPOLGY 6**  
**Freeway On-Ramp**

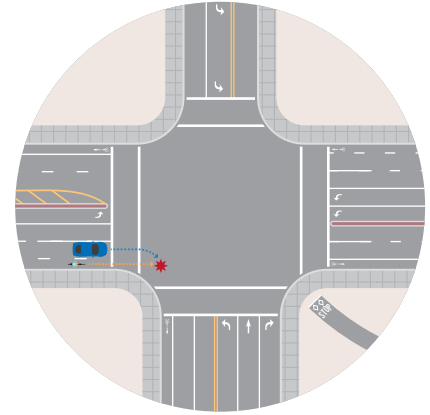




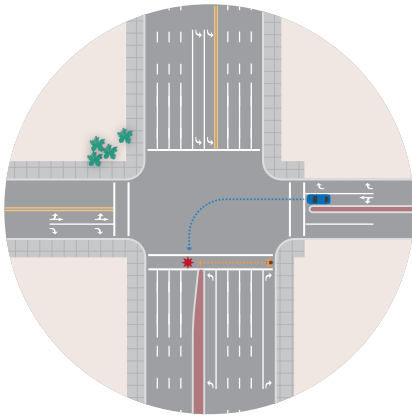
**TYPOLGY 7**  
**Single-Family Residential Area**



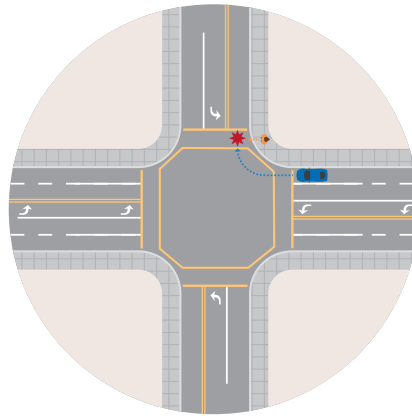
**TYPOLGY 8**  
**MPAH Serving Bicyclists**



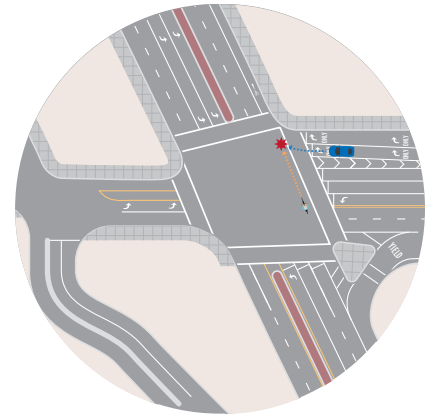
**TYPOLGY 9**  
**Trail Crossing**



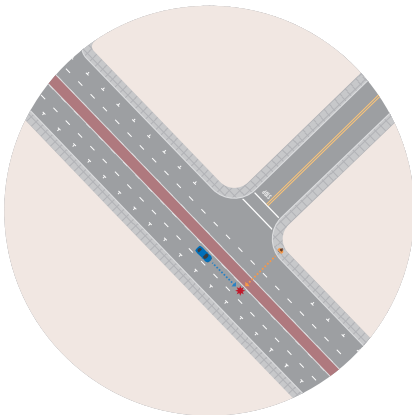
**TYPOLGY 10**  
**Driveway Turns**



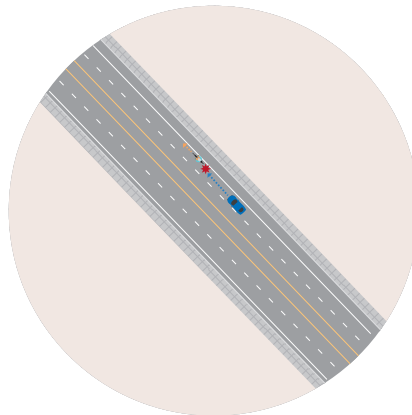
**TYPOLGY 11**  
**Senior and Children-Serving Land Uses**



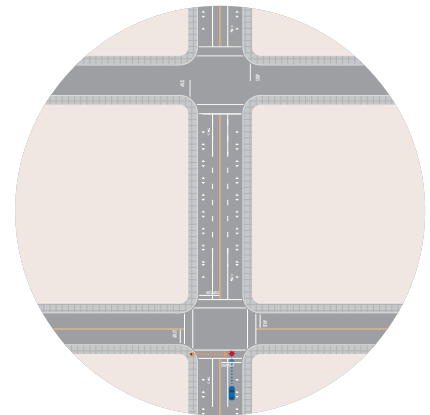
**TYPOLGY 12**  
**Skewed Intersection**



**TYPOLGY 13**  
**Coastal Uncontrolled Pedestrian Crossing**



**TYPOLGY 14**  
**Unsafe Speed on Limited Access Arterial**



**TYPOLGY 15**  
**Parallel Option to High-Volume Arterial**

