

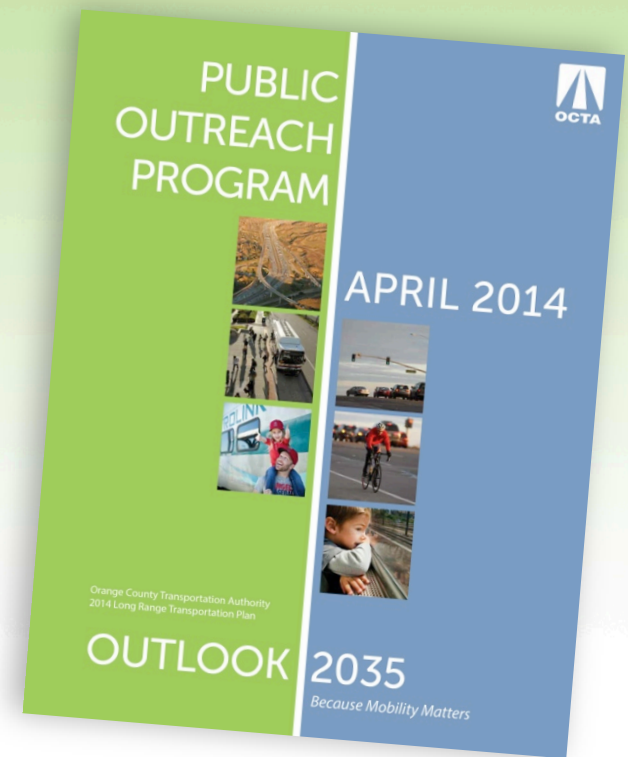
Draft 2014 Long-Range Transportation Plan

OUTLOOK 2035

Because Mobility Matters

2014 LRTP

- Transportation vision document
- Updated every four years
- Input for the RTP
- Must consider:
 - Stakeholder input
 - Socioeconomic forecasts
 - Revenue forecasts
 - Current commitments
 - State and federal mandates
 - Regional coordination
 - Technology developments



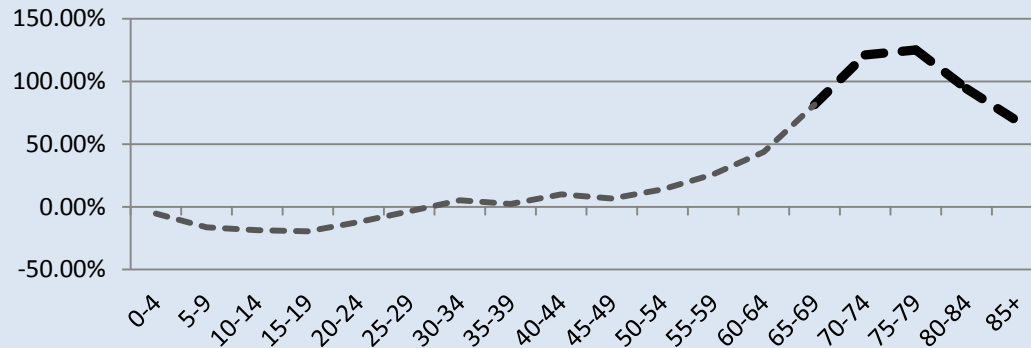
2035 Scenarios

- **Baseline**
 - Existing transportation system
 - Fully funded Federal Transportation Improvement Plan projects
- **Preferred**
 - Baseline projects
 - M2
 - Financially constrained discretionary projects
- **Conceptual**
 - Baseline and preferred projects
 - Financially unconstrained projects
 - Benefit the goals and objectives
 - Require additional revenues and/or study



Projections through 2035

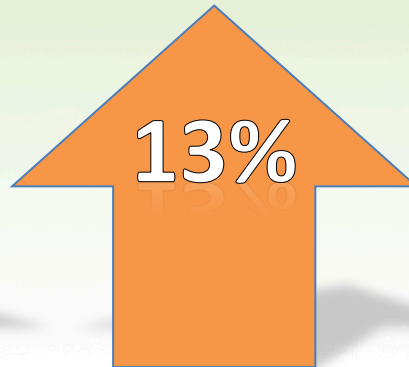
% Change in Orange County Population by Age, 2010-2035



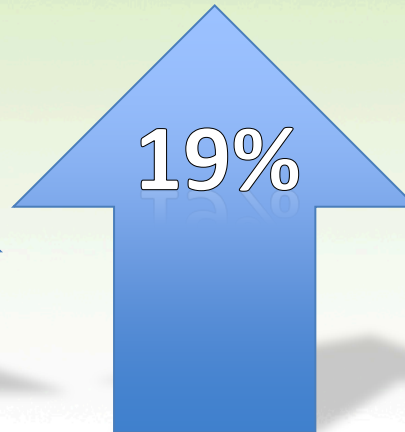
Source: OCP 2010 Modified



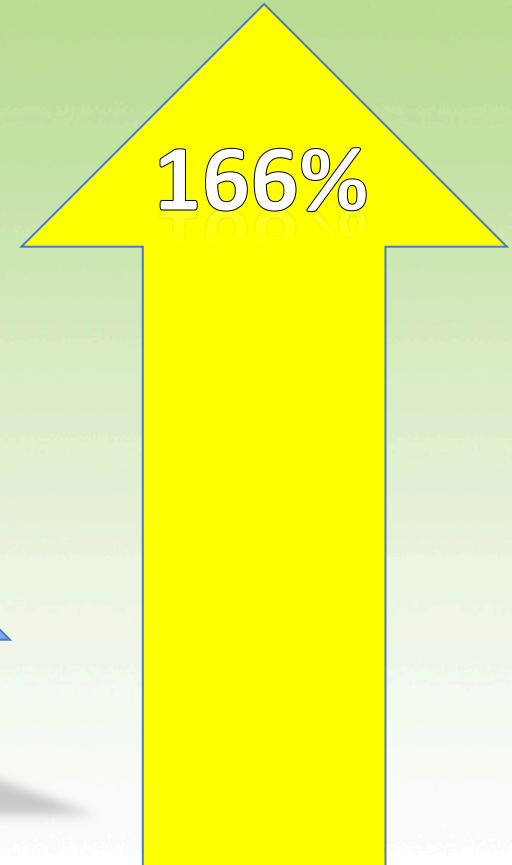
Housing



Population



Employment



Total delay due to congestion

Overall Stakeholder Themes

1. **Optimize** transportation systems (signal synchronization, rapid bus, and managed lanes)
2. **Maintain** streets and highways
3. **Educate** the public about transportation alternatives, bicycle safety, and managed lane strategies
4. **Innovate** new transit strategies, especially rail, and provide real-time information
5. **Collaborate** on regional solutions, and work with local jurisdictions to link land use and transportation plans
6. **Explore** incentives for carpools on toll roads, expansion of bus service and the vanpool program, dedicated lanes for transit on streets and freeways, and potential for managed lanes

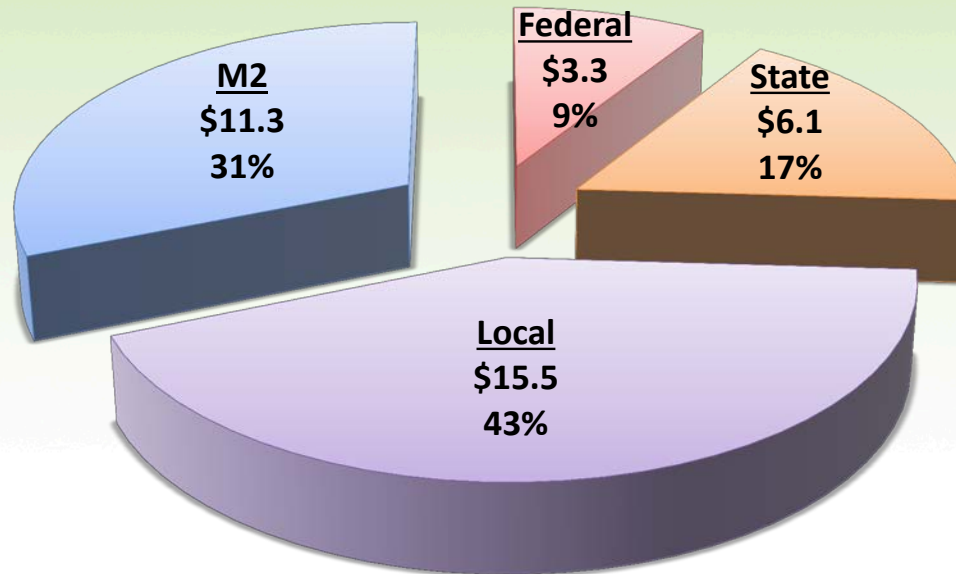
Preferred Scenario

Project Selection Factors

- Stakeholder Input
- Project Readiness
- Goals and Objectives
- Revenue Forecast

Draft 2014 LRTP – Fiscal Year 2015-35 Revenue Forecast (Billions)

Total Revenues = \$36.1 Billion

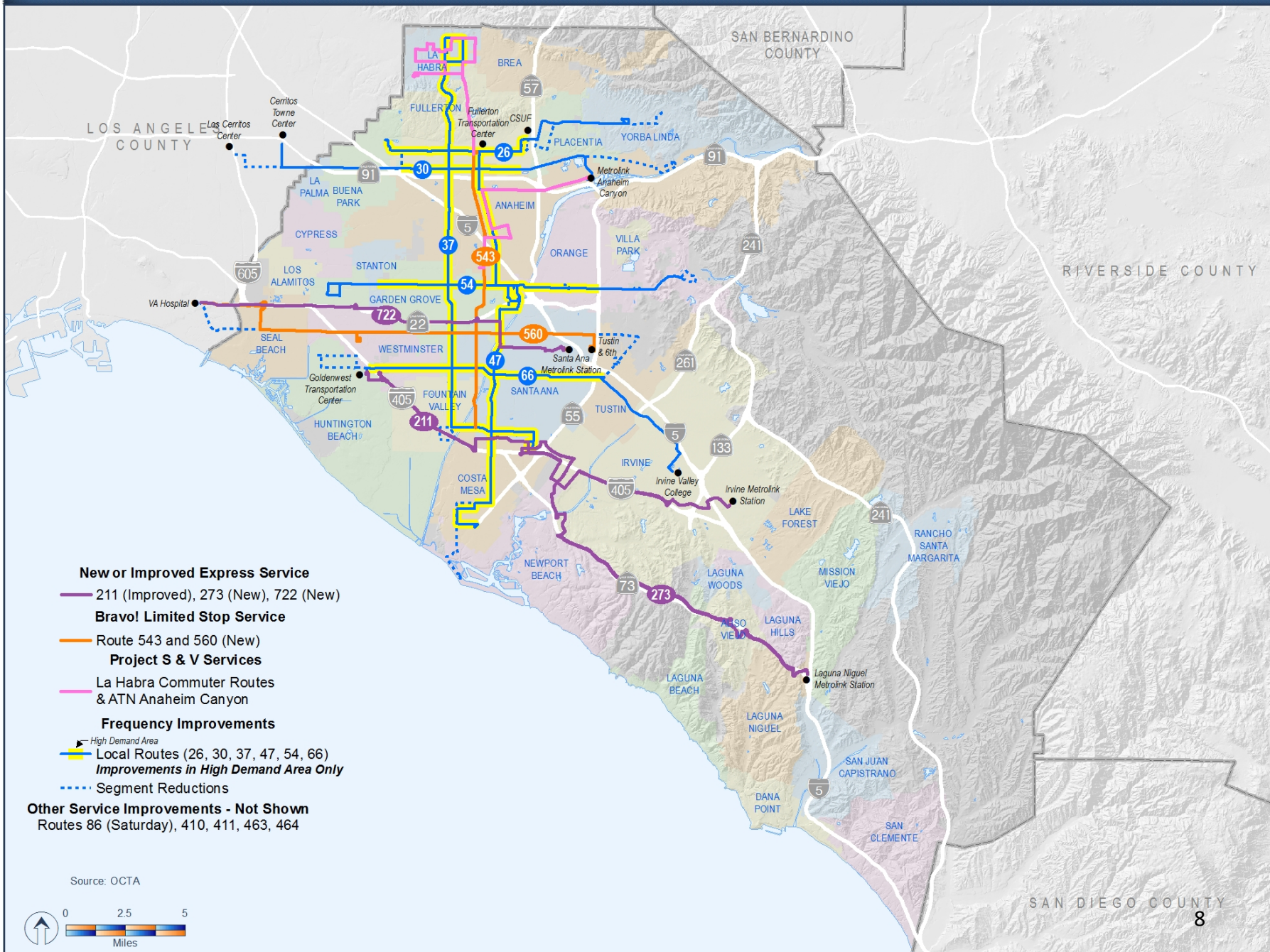


Draft Preferred Scenario

- Proposed additions over 2010 Base Year:
 - New bus and streetcar service on high-demand corridors
 - Enhanced bus routes to maintain on-time performance
 - 20 new weekday Metrolink trains
 - 650 miles of bikeways
 - 820 lane miles on the Master Plan of Arterial Highways
 - 206 freeway/carpool lane miles
 - 236 tollway lane miles
 - 450 vanpools and station vans



2035 Bus Service Improvements



New or Improved Express Service

— 211 (Improved), 273 (New), 722 (New)

Bravo! Limited Stop Service

— Route 543 and 560 (New)

Project S & V Services

— La Habra Commuter Routes & ATN Anaheim Canyon

Frequency Improvements

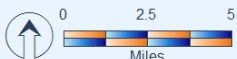
— High Demand Area
 — Local Routes (26, 30, 37, 47, 54, 66)
 — Improvements in High Demand Area Only

— Segment Reductions

Other Service Improvements - Not Shown

Routes 86 (Saturday), 410, 411, 463, 464

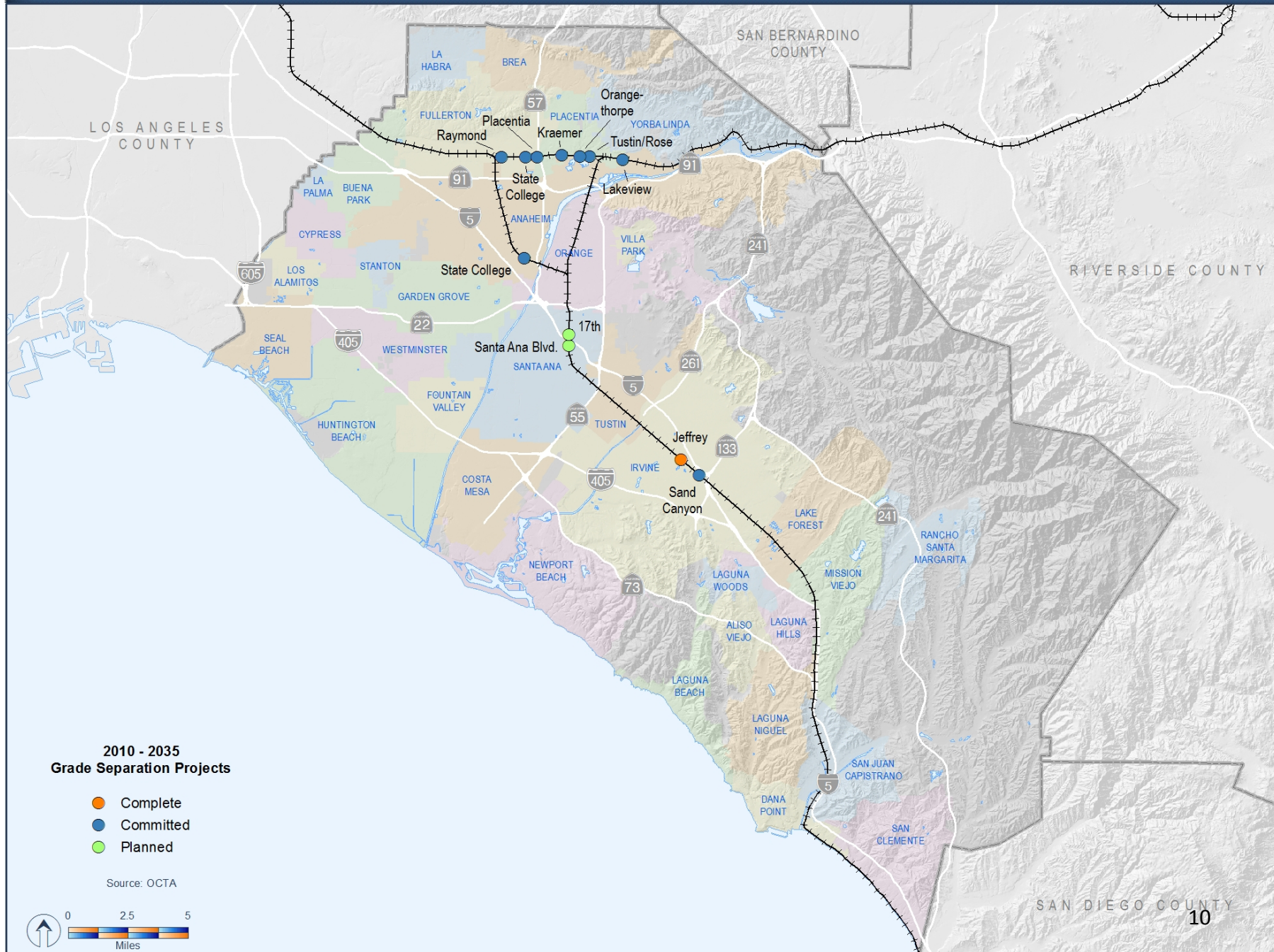
Source: OCTA



2035 Metrolink Service Expansion and Fixed Guideways



2010 - 2035 Grade Separation Projects



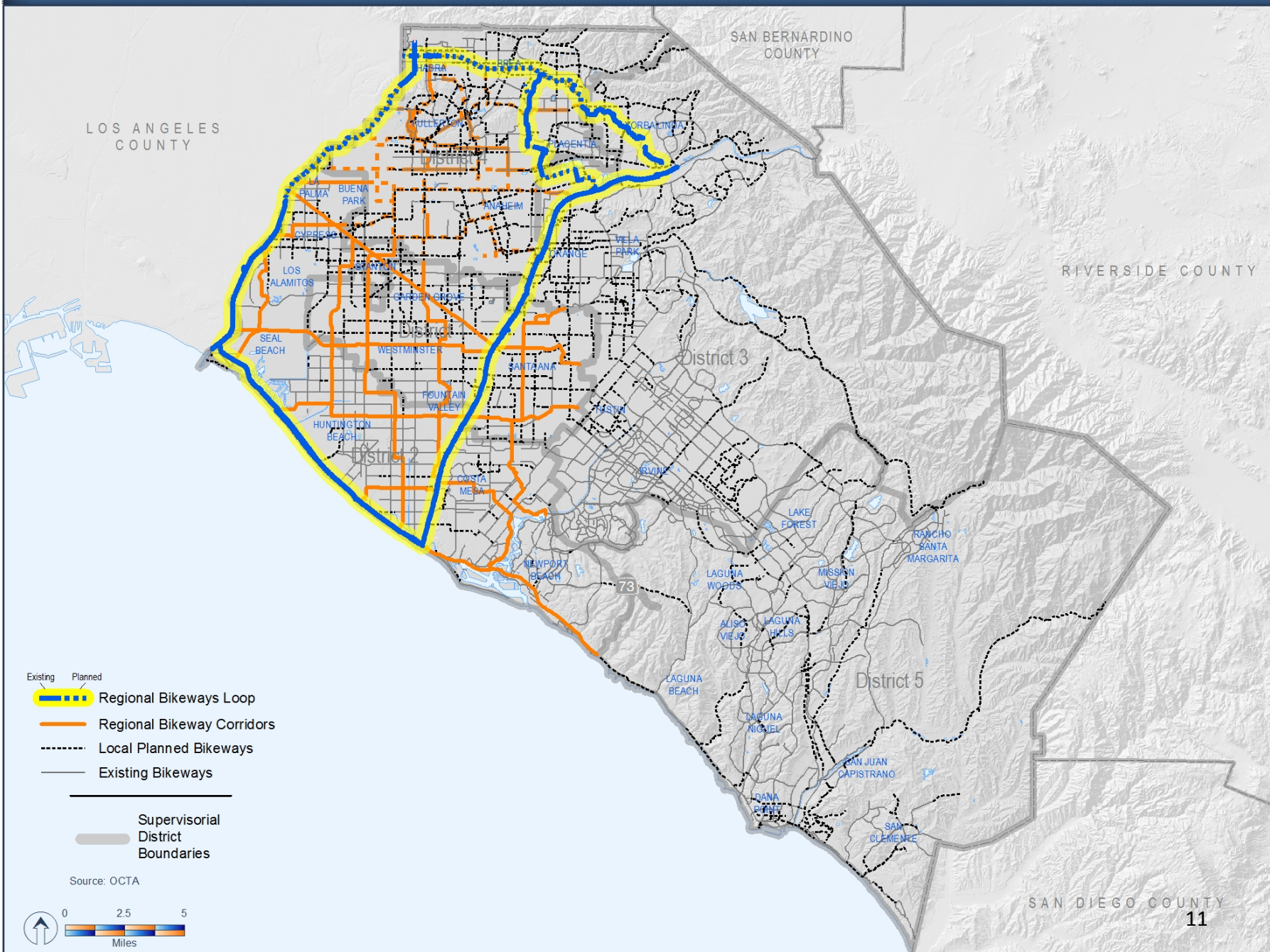
2010 - 2035 Grade Separation Projects

- Complete
- Committed
- Planned

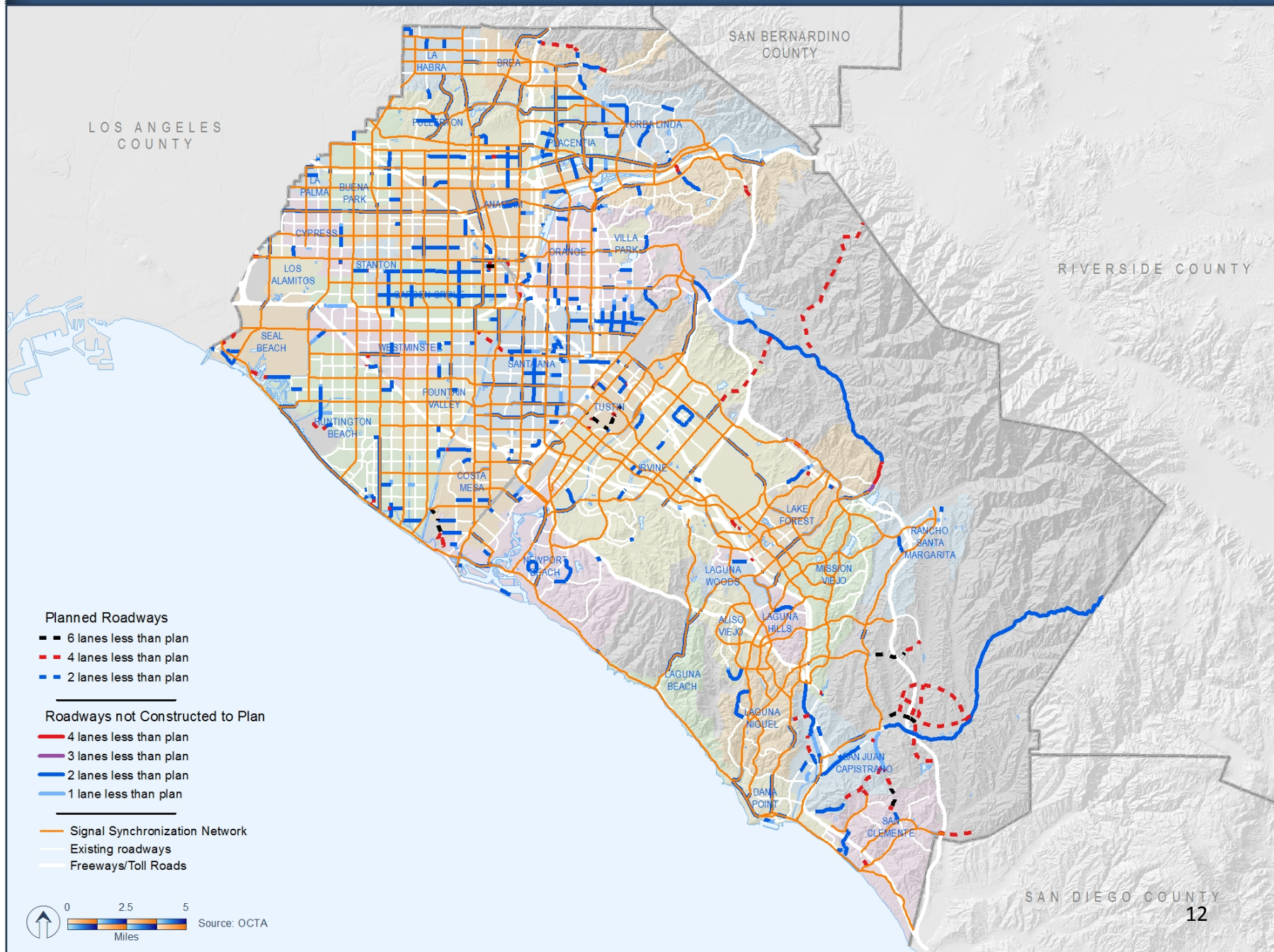
Source: OCTA



2035 Planned Regional Bikeways Corridors



Future Roadway Projects by 2035



2035 Preferred Scenario Freeway, HOV, and Tollway Lane Addition Areas



Lane Addition Areas

- General Purpose
- HOV
- TCA
- San Diego County Freeway Improvement Project
- New Facility
- Existing HOV Facilities
- No Planned Lane Additions
- Interchange Improvements

Source: OCTA



SCAG – Southern California Association of Governments
 I-405 – Interstate 405
 HOV – High-occupancy vehicle
 TCA – Transportation Corridor Agency
 HOT – High-occupancy toll

8 General Purpose Lanes + 2 HOV Lanes

8 General Purpose Lanes + 4 HOT Lanes by 2050

Systems Integration

- Efficiencies can be gained through integrated transportation systems
 - Shared infrastructure
 - Connectivity between modes
 - Access to key destinations
 - Improved travel times



Draft Preferred Scenario

Draft 2035 Preferred Scenario - Initial Model Results

	2010 Base Year	2035 Baseline	Draft 2035 Preferred	Percent Change from 2035 Baseline	
Daily Transit Trips	133,469	165,219	189,426	14.7% Increase	●
Total Vehicle Hours of Delay	274,646	729,432	506,142	30.6% Decrease	●
Daily Vehicle Miles Traveled	63,404,082	81,112,113	81,750,024	0.8% Increase	●
Average Speed – Freeway GP Peak	40.4	34.5	39.0	13.2% Increase	●
Average Speed – HOV Peak	48.4	57.4	59.5	3.6% Increase	●
Average Speed – Arterial Peak	30.3	22.7	27.2	20.0% Increase	●

GP – general purpose lanes

Note: HOV modeled with three-plus occupancy requirement in 2035.

Source: Orange County Transportation Analysis Model 3.4.1

- = desirable outcome
- = needs improvement
- = unacceptable outcome

Beyond the Preferred Scenario

- Projects requiring additional funding and/or study:
 - Guideway connector and extensions
 - Nine new rapid bus routes in high-demand areas
 - 36 new weekday Metrolink trains
 - Six LOSSAN grade separations
 - Operational freeway/carpool improvements
- 2016 RTP/SCS regional strategies
- Four-Year Action Plan



SCS – Sustainability Communities Strategy

2014 LRTP Four-Year Action Plan

- Collaborate on inter-county connectivity
 - LOSSAN/Green Line connection
 - Gold Line Eastern Extension – Phase 2
 - I-405 Corridor Master Plan
 - San Diego's Interstate 5 HOT Lane Project
 - 91 Express Lanes extension into Riverside County
- Study intra-county opportunities
 - Regional active transportation planning
 - Guideway projects expansion
 - Sustainable transportation strategies
 - Toll Roads (TCAs) coordination
- Enhance transportation outreach and education
 - Active transportation safety
 - Transit use and trip planning
- Monitor emerging issues
 - State/federal funding opportunities
 - 2016 RTP/SCS
 - Technology advancements
 - Autonomous vehicles
 - Alternative fuels
 - Smart phone applications

Next Steps

- Release draft for 45-day public review
- Open House on May 7, 2014
- Final LRTP in September 2014
- Submit to SCAG by November 2014